



HLC Accreditation 2016-2017

## **Evidence Document**

---

Academic Affairs

Office of Planning and Analysis

---

### **Student Retention and Graduation Rates Quick Facts**

---

**Additional information:**

# Student Retention and Graduation Rates Quick Facts

This file contains retention and graduation rates for new freshmen and new transfer students.

**Figure 1: Three Year Rolling Average Retention and Graduation Rates for First-time Full-time IPEDS-based Freshmen**

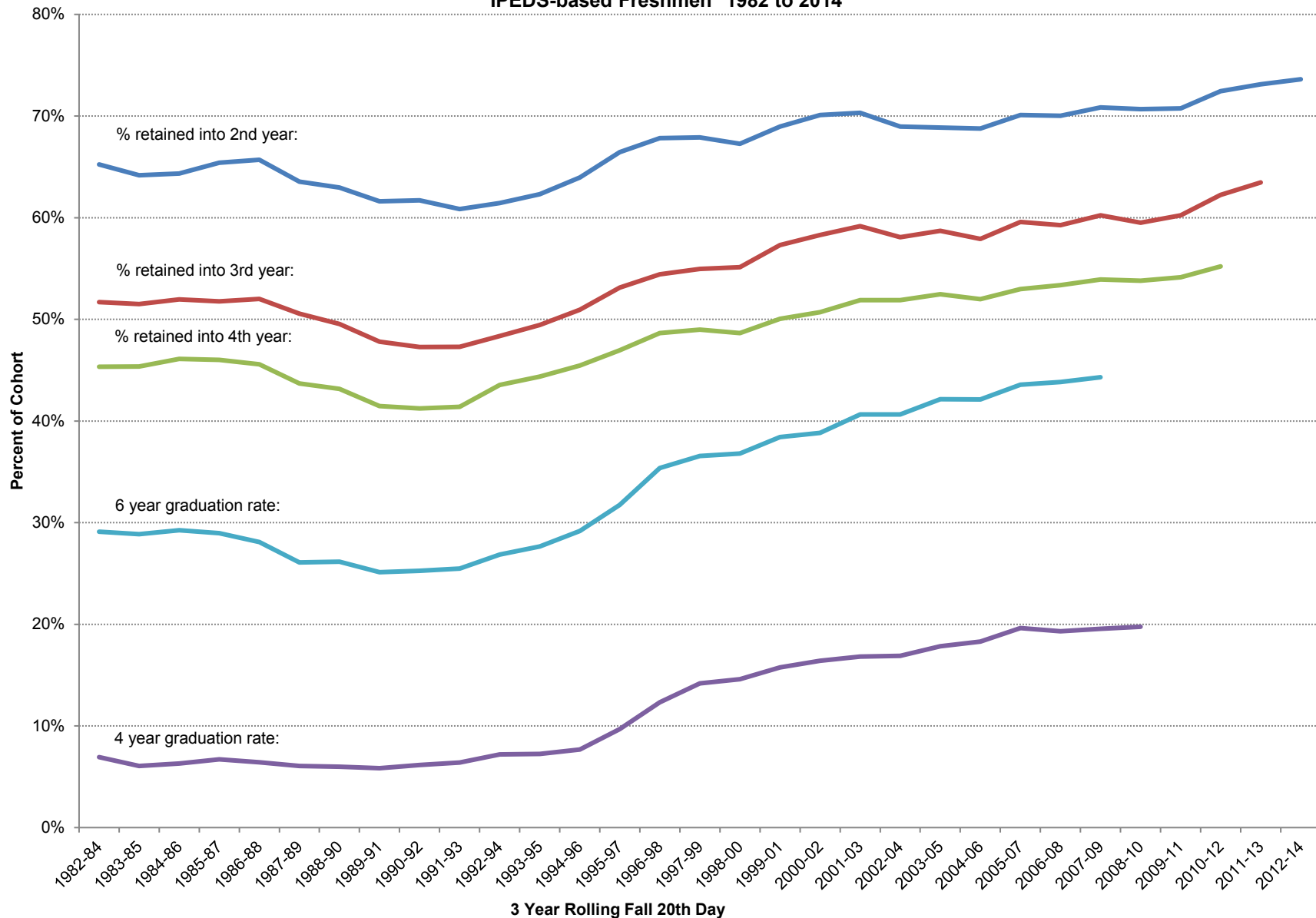
**Table 1: Annual Retention Rates of First-time Full-time IPEDS-based Freshmen**

**Table 2: Annual Graduation Rates of First-time Full-time IPEDS-based Freshmen**

**Table 3: Student Retention Rates for New IPEDS-based Freshmen and Transfers**

**Table 4: Three Year Rolling Student Retention Rates for New IPEDS-based Freshmen and Transfers**

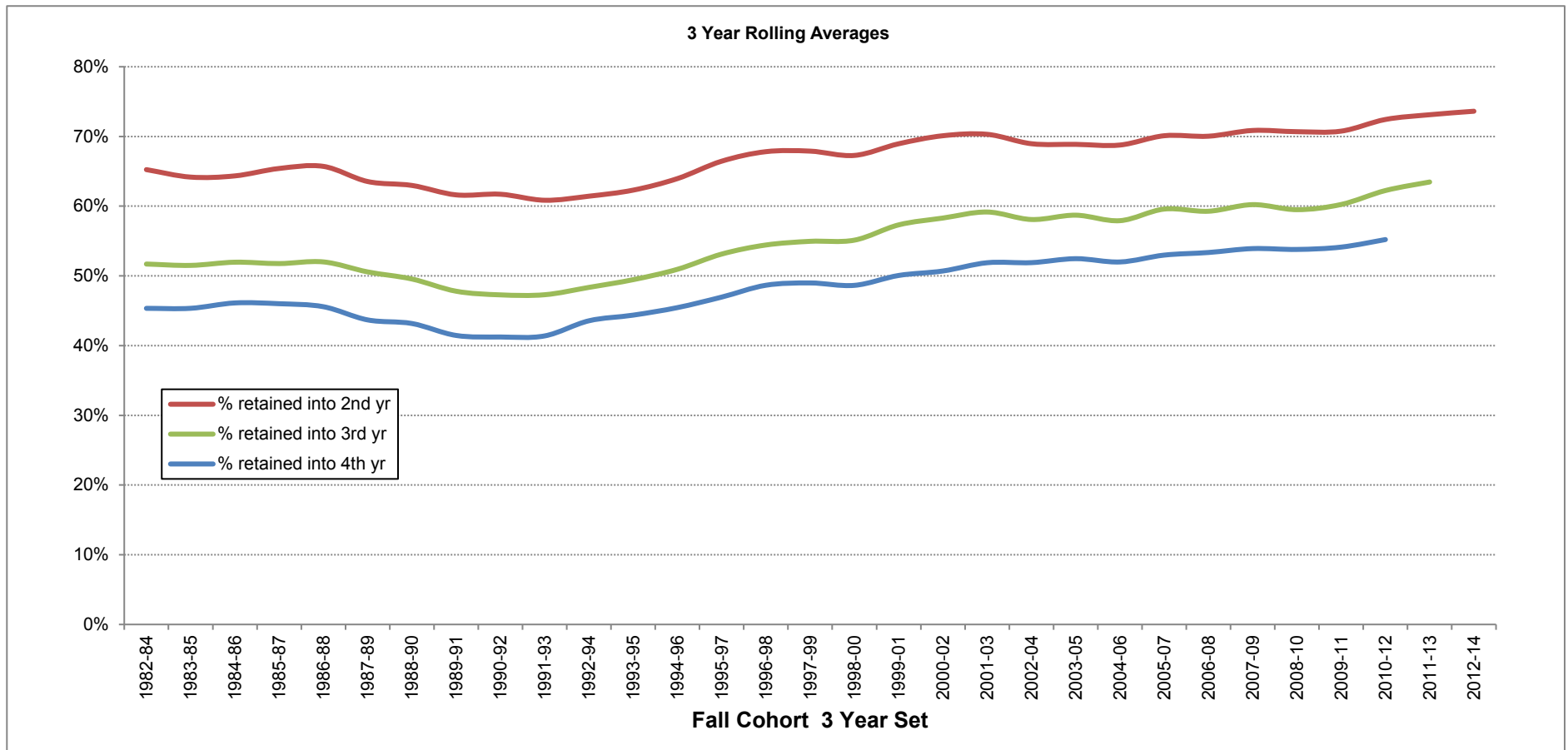
**Figure 1: Three Year Rolling Average Retention and Graduation Rates for First-time Full-time IPEDS-based Freshmen\* 1982 to 2014**



\* Cohorts are based on the 1st occurrence of the new IPEDS- based freshmen student indicator in the Fall 20th day frozen tables in which the student was enrolled for 12 or more hours.

**Table 1: Summary Annual Retention Rates of First-time Full-time IPEDS-based Freshmen\***

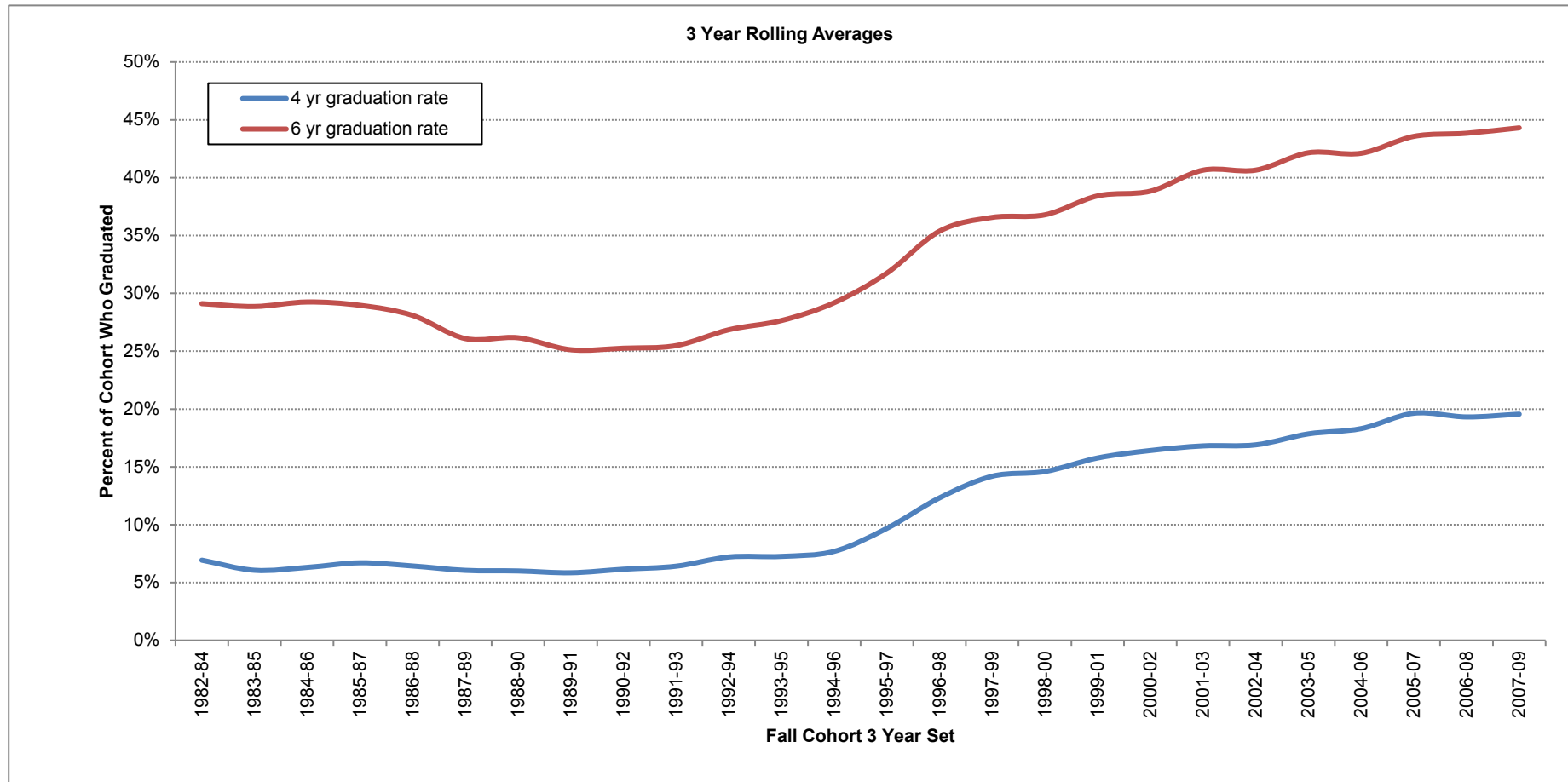
% of cohort who are retained:	Fall Cohorts											weighted 3 yr rolling averages		
	2005	2006	2007	2008	2009	2010	2011	2012	2013	2014	2014	2009-11	2010-12	2011-13
% retained into 2nd yr	70.2%	67.0%	73.1%	70.0%	69.7%	72.6%	70.2%	74.5%	74.6%	72.0%		72.4%	73.1%	73.6%
% retained into 3rd yr	60.3%	55.5%	63.0%	59.3%	58.5%	60.7%	61.5%	64.3%	64.5%	n/a		62.2%	63.5%	n/a
% retained into 4th yr	52.5%	50.6%	55.9%	53.6%	52.4%	55.6%	54.5%	55.5%	n/a	n/a		55.2%	n/a	n/a



\*Cohorts are based on the 1st occurrence of the new IPEDS-based freshmen student indicator on the Fall 20th day frozen tables in which the student was enrolled in 12 or more credit hours.

**Table 2: Annual Graduation Rates for First-time Full-time IPEDS-based Freshmen\***

% of cohort who graduated:	Fall Cohorts										weighted 3 yr rolling averages		
	2005	2006	2007	2008	2009	2010	2011	2012	2013	2014	2006-08	2007-09	2008-10
% graduated in 4 years	20.4%	17.0%	21.5%	19.5%	17.8%	22.2%	n/a	n/a	n/a	n/a	19.3%	19.6%	19.8%
% graduated in 6 years	43.4%	41.2%	46.1%	44.2%	42.7%	n/a	n/a	n/a	n/a	n/a	43.8%	44.3%	n/a



\*Cohorts are based on the 1st occurrence of the new IPEDS-based freshmen student indicator on the Fall 20th day frozen tables in which the student was enrolled in 12 or more credit hours. Graduation rates based on first Bachelor degree post cohort year; degree year is based on an academic year comprised of a fall-spring-summer sequence.

**Table 3: Student Retention Rates for New IPEDS-based Freshmen and Transfers, 2005 to 2014**

Cohort type*:	Year of Fall 20th Day									
	2005	2006	2007	2008	2009	2010	2011	2012	2013	2014
<b><u>New IPEDS-based Freshmen:</u></b>										
cohort base	1,241	1,224	1,259	1,344	1,300	1,202	1,270	1,293	1,274	1,427
% retained into 2nd yr	68.6%	64.8%	70.7%	67.7%	68.0%	70.0%	67.7%	72.4%	72.9%	70.7%
% retained into 3rd yr	58.5%	53.3%	60.4%	57.1%	56.7%	58.8%	59.1%	62.2%	62.9%	n/a
% retained into 4th yr	50.7%	48.3%	53.8%	51.5%	50.2%	53.4%	52.6%	53.9%	n/a	n/a
4 yr graduation rate	18.8%	16.0%	20.3%	18.5%	16.7%	20.7%	n/a	n/a	n/a	n/a
6 yr graduation rate	40.5%	38.9%	43.8%	42.3%	40.4%	n/a	n/a	n/a	n/a	n/a
<b><u>New Full-time IPEDS-based Freshmen:</u></b>										
cohort base	1,140	1,137	1,145	1,249	1,206	1,103	1,190	1,219	1,218	1,384
% retained into 2nd yr	70.2%	67.0%	73.1%	70.0%	69.7%	72.6%	70.2%	74.5%	74.6%	72.0%
% retained into 3rd yr	60.3%	55.5%	63.0%	59.3%	58.5%	60.7%	61.5%	64.3%	64.5%	n/a
% retained into 4th yr	52.5%	50.6%	55.9%	53.6%	52.4%	55.6%	54.5%	55.5%	n/a	n/a
4 yr graduation rate	20.4%	17.0%	21.5%	19.5%	17.8%	22.2%	n/a	n/a	n/a	n/a
6 yr graduation rate	43.4%	41.2%	46.1%	44.2%	42.7%	n/a	n/a	n/a	n/a	n/a
<b><u>New Transfers:</u></b>										
cohort base	1,117	1,256	1,167	1,200	1,295	1,257	1,361	1,338	1,296	1,381
% retained into 2nd yr	63.9%	67.2%	68.6%	66.1%	67.6%	67.9%	68.2%	68.0%	66.7%	68.6%
<b><u>New Transfer Full-time Freshmen:</u></b>										
cohort base	154	350	259	415	229	225	269	156	152	167
% retained into 2nd yr	57.1%	68.0%	66.8%	68.4%	68.6%	63.6%	62.8%	62.2%	60.5%	65.3%
% retained into 3rd yr	46.1%	50.3%	49.0%	48.7%	54.1%	48.0%	49.8%	46.8%	46.7%	n/a
% retained into 4th yr	35.7%	29.4%	34.0%	29.4%	41.5%	39.6%	39.8%	39.1%	n/a	n/a
4 yr graduation rate	28.6%	36.3%	38.6%	38.8%	24.9%	28.4%	n/a	n/a	n/a	n/a
6 yr graduation rate	40.3%	46.9%	50.2%	49.6%	40.6%	n/a	n/a	n/a	n/a	n/a
<b><u>New Transfer Sophomores:</u></b>										
cohort base	393	306	356	259	419	388	430	457	437	467
% retained into 2nd yr	67.2%	72.2%	75.0%	69.9%	68.7%	71.9%	69.8%	72.0%	67.5%	69.2%
<b><u>New Transfer Juniors:</u></b>										
cohort base	367	334	338	236	394	392	382	474	459	483
% retained into 2nd yr	68.7%	73.1%	71.6%	72.5%	73.6%	73.5%	77.5%	73.6%	74.7%	73.7%

\*Cohorts are based on the 1st occurrence of the new IPEDS-based freshmen and new transfer student indicators in the Fall 20th day frozen tables; student class for new transfers are based on the student class level of the cohort term within the Fall 20th day frozen tables. Graduation rates based on 1st Bachelor degree.

**Table 4: Three Year Rolling Student Retention Rates for New IPEDS-based Freshmen and Transfers, 2003-2005 to 2012-2014**

Cohort type*:	3 Year Rolling Average of Fall 20th Day									
	2003-05	2004-06	2005-07	2006-08	2007-09	2008-10	2009-11	2010-12	2011-13	2012-14
<b><u>New IPEDS-based Freshmen:</u></b>										
3 yr rolling average cohort base	1,203	1,208	1,241	1,276	1,301	1,282	1,257	1,255	1,279	1,331
% retained into 2nd yr	66.3%	66.6%	68.0%	67.8%	68.8%	68.5%	68.5%	70.0%	71.0%	72.0%
% retained into 3rd yr	56.3%	55.9%	57.4%	57.0%	58.0%	57.5%	58.2%	60.1%	61.4%	
% retained into 4th yr	49.8%	49.7%	50.9%	51.2%	51.8%	51.6%	52.0%	53.3%		
4 yr graduation rate	16.4%	17.0%	18.4%	18.3%	18.5%	18.6%	n/a	n/a	n/a	n/a
6 yr graduation rate	38.9%	39.3%	41.1%	41.7%	42.1%		n/a	n/a	n/a	n/a
<b><u>New Full-time IPEDS-based Freshmen:</u></b>										
3 yr rolling average cohort base	1,079	1,109	1,141	1,177	1,200	1,186	1,166	1,171	1,209	1,274
% retained into 2nd yr	68.9%	68.8%	70.1%	70.0%	70.9%	70.7%	70.8%	72.4%	73.1%	73.6%
% retained into 3rd yr	58.7%	57.9%	59.6%	59.3%	60.2%	59.5%	60.2%	62.2%	63.5%	
% retained into 4th yr	52.5%	52.0%	53.0%	53.4%	53.9%	53.8%	54.1%	55.2%		
4 yr graduation rate	17.9%	18.3%	19.6%	19.3%	19.6%	19.8%	n/a	n/a	n/a	n/a
6 yr graduation rate	42.2%	42.1%	43.6%	43.8%	44.3%		n/a	n/a	n/a	n/a
<b><u>New Transfers:</u></b>										
3 yr rolling average cohort base	1,141	1,168	1,180	1,208	1,221	1,251	1,304	1,319	1,332	1,338
% retained into 2nd yr	65.3%	65.6%	66.6%	67.3%	67.4%	67.2%	67.9%	68.0%	67.7%	67.8%
<b><u>New Transfer Full-time Freshmen:</u></b>										
3 yr rolling average cohort base	170	220	254	341	301	290	241	217	192	158
% retained into 2nd yr	59.2%	63.7%	65.4%	67.9%	68.0%	67.2%	64.9%	62.9%	62.0%	62.7%
% retained into 3rd yr	46.1%	48.0%	49.0%	49.3%	50.2%	49.9%	50.6%	48.5%	48.2%	
% retained into 4th yr	31.6%	30.7%	32.2%	30.6%	33.8%	35.2%	40.2%	39.5%		
4 yr graduation rate	28.8%	33.7%	35.5%	37.9%	35.2%	32.5%	n/a	n/a	n/a	n/a
6 yr graduation rate	40.4%	44.2%	46.7%	48.8%	47.5%		n/a	n/a	n/a	n/a
<b><u>New Transfer Sophomores:</u></b>										
3 yr rolling average cohort base	424	373	352	307	345	355	412	425	441	454
% retained into 2nd yr	68.8%	70.3%	71.3%	72.6%	71.2%	70.2%	70.1%	71.2%	69.8%	69.6%
<b><u>New Transfer Juniors:</u></b>										
3 yr rolling average cohort base	341	346	346	303	323	341	389	416	438	472
% retained into 2nd yr	70.4%	70.6%	71.0%	72.4%	72.6%	73.3%	74.8%	74.8%	75.1%	74.0%

\*Cohorts are based on the 1st occurrence of the new IPEDS-based freshmen and new transfer student indicators in the Fall 20th day frozen tables; student class for new transfers are based on the student class level of the cohort term within the Fall 20th day frozen tables. Graduation rates based on 1st Bachelor degree.