



**WICHITA STATE  
UNIVERSITY**

**UNIVERSITY LIBRARIES**

## Fairmount College Annual Catalog 1903-1904

Item Type	Catalog
Authors	Fairmount College (Wichita, Kan.)
Citation	Fairmount College. (1903) Eighth annual catalogue of Fairmount College (Wichita, Kansas): For the collegiate year 1902-1903 with announcements for the year 1903-1904 (Issued June 20, 1903). Press of the Wichita Eagle.
Publisher	Press of the Wichita Eagle
Rights	in public domain; digitized by Wichita State University Libraries
Download date	2026-05-12 12:10:04
Link to Item	<a href="https://hdl.handle.net/10057/30192">https://hdl.handle.net/10057/30192</a>



*H*airmount College  
Catalogue

1903

## CALENDAR 1903-1904

### 1903

ENTRANCE EXAMINATIONS—Monday and Tuesday, September 7th and 8th.

FIRST HALF YEAR, EIGHTEEN WEEKS—Begins 9 A. M. Tuesday, September 8th.

THANKSGIVING—November 28th-30th; no college exercises.

RECESS FOR THE HOLIDAYS—Begins December 19th.

### 1904

COLLEGE SESSION—Resumes Tuesday, January 5th.

MID-YEAR EXAMINATIONS—Thursday, Friday and Saturday, January 21st, 22nd and 23rd.

SECOND HALF YEAR, EIGHTEEN WEEKS—Begins 9 A. M. Tuesday, January 26th.

DECORATION DAY—Monday, May 30th.

ANNIVERSARY OF THE COLLEGE—Friday to Wednesday, May 27th to June 1st.

FINAL EXAMINATIONS, SENIOR COLLEGE—Friday and Saturday, May 20th and 21st.

FINAL EXAMINATIONS, SENIOR ACADEMY—Wednesday and Thursday, May 25th and 26th.

FINAL EXAMINATIONS—Friday, Saturday and Tuesday, May 27th, 28th and 31st.

BACCALAUREATE SERMON—Sunday, May 29th.

COMMENCEMENT EXERCISES OF THE ACADEMY—Monday evening, May 30th

ADDRESS BEFORE THE UNITED LITERARY SOCIETIES, BY REV. S. PARKS CADMAN, D. D.—Tuesday evening, May 31st.

COMMENCEMENT EXERCISES—Wednesday morning, June 1st.

ANNUAL BANQUET OF COLLEGE AUTHORITIES AND PATRONS at 1 p. m.

REUNION AND BANQUET OF THE ALUMNI ASSOCIATION at 5 p. m.

PUBLIC RECEPTION BY THE FACULTY at 8 p. m.

FIRST HALF YEAR, EIGHTEEN WEEKS—Begins 9 A. M. Tuesday, September 6th.

*EIGHTH ANNUAL CATALOGUE*

*...OF...*

*Fairmount College*  
*WICHITA, KANSAS*

---

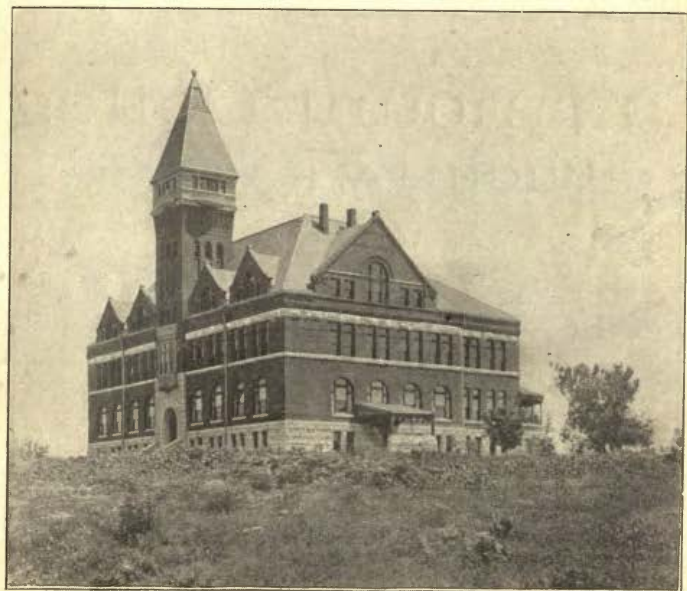
*For the Collegiate Year, 1902-1903,*  
*with Announcements for the*  
*Year, 1903-1904*

---

*ISSUED JUNE 20th, 1903*

---

*Press of*  
*The Wichita Eagle*  
*1903*



**FAIRMOUNT COLLEGE**

**Main Building**

## OFFICERS

### BOARD OF TRUSTEES

NATHAN J. MORRISON, D. D., LL. D. . . . . *Ex-Officio* President

#### TERM EXPIRES JUNE, 1904

REV. EDWARD F. WILLIAMS, D. D. . . . . Chicago, Ill  
MR. CHARLES E. MORRISON . . . . . Boston, Mass  
MR. EDWIN TUCKER . . . . . Eureka  
MR. JOSEPH M. KNAPP . . . . . Wichita  
MR. ROBERT L. HOLMES . . . . . Wichita

#### TERM EXPIRES JUNE, 1905

MR. NEWELL C. KNIGHT . . . . . Chicago  
MR. GEORGE H. HUNTER . . . . . Wellington  
MR. HOWARD W. DARLING . . . . . Wichita  
MR. E. HIGGINSON . . . . . Wichita  
MR. SCOTT E. WINNE . . . . . Wichita  
REV. WILSON C. WHEELER . . . . . Wellington

#### TERM EXPIRES JUNE, 1906

MR. CHARLES G. COHN . . . . . Wichita  
REV. HENRY E. THAYER . . . . . Topeka  
FRANK L. ABBEY, M. D. . . . . Newton  
REV. CLARENCE S. SARGENT, D. D. . . . . Wichita  
MR. HUGH S. HALL . . . . . Roswell, New Mexico  
MR. ISAAC N. SELIGMAN . . . . . New York, N. Y.

#### TERM EXPIRES JUNE, 1907

MR. ANDREW C. JOBES . . . . . Wichita  
MR. CHARLES E. POTTS . . . . . Wichita  
MR. EDWARD D. KENNA . . . . . Chicago, Ill  
MR. SAMUEL W. COOPER . . . . . Wichita  
MR. WALTER H. GRAVES . . . . . Wichita  
REV. S. PARKS CADMAN, D. D. . . . . New York, N. Y.

### OFFICERS OF THE BOARD

NATHAN J. MORRISON . . . . . President  
ROBERT L. HOLMES . . . . . Secretary and Treasurer  
S. FRANK POOLE . . . . . Assistant Treasurer  
CHARLES E. MORRISON, President Fauneil Hall National Bank, . . .  
. . . . . Boston, Mass., Eastern Fiscal Agent

## PERMANENT COMMITTEES

### Executive Committee.

\*Joseph M. Knapp, Samuel W. Cooper,  
Robert L. Holmes, Charles G. Cohn,  
Howard W. Darling, Clarence S. Sargent.  
Nathan J. Morrison.

### Finance.

Charles G. Cohn, Newell C. Knight,  
Isaac N. Seligman, Andrew C. Jobes,  
Charles E. Potts, Scott E. Winne,  
Robert L. Holmes.

### Buildings and Grounds.

William H. Isely, Samuel W. Cooper,  
Robert L. Holmes, George I. Gavett,  
Clarence S. Sargent, Nathan J. Morrison.

### Woman's Department.

Scott E. Winne, Dean of the Department. Charles E. Potts,  
Henry E. Thayer, Walter H. Graves,  
Samuel W. Cooper, Newell C. Knight.

### The Academy.

Robert L. Holmes, Samuel S. Kingsbury,  
William H. Isely, Howard W. Darling,  
Clarence S. Sargent.

### Department of Normal Training.

William H. Isely, Clarence S. Sargent,  
George H. Hunter, Nathan J. Morrison,  
Siegel A. Buckborough.

### Library.

Clarence S. Sargent, The Librarian. Edward F. Williams,  
Andrew C. Jobes, William H. Isely,  
Wilson C. Wheeler.

### Department of Fine Arts.

Director of the Department, S. Frank Poole,  
Edwin Tucker, Frank L. Abbey,  
Joseph M. Knapp.

### The School of Music.

Howard W. Darling, Director of the Department,  
Nathan J. Morrison, Robert L. Holmes,  
Joseph M. Knapp, George H. Hunter.

### Auditing Accounts.

Andrew C. Jobes, Newell C. Knight, Charles G. Cohn,  
Edward D. Kenna, Charles E. Morrison.  
Edwin Tucker.

\*The first named member of each committee is chairman of the same.

## FACULTY AND OTHER OFFICERS

---

NATHAN J. MORRISON, D. D., LL. D. (Dartmouth), President.  
Professor of Psychology, Moral Philosophy and Logic.

FLORA C. CLOUGH, B. L. (Olivet).  
Dean of the Woman's Department, Professor of English Literature.

WILLIAM H. ISELY, B. A. (Harvard),  
Dean of College, Professor of History and Political Science.

CLIFFORD P. CLARK, B. A. (Conn. Wesleyan and Heidelberg),  
Professor of the Latin Language and Literature.

GEORGE IRVING GAVETT, B. S., (C. E.), (Michigan University),  
Professor of Mathematics.

THEODORE H. MORRISON, B. Ph. (Marietta), LL. B. (Northwestern),  
Librarian.

SAMUEL SHIPMAN KINGSBURY, M. A., Ph. D. (Johns Hopkins),  
Professor of Greek and German.

S. FRANK POOLE, M. S. (Harvard),  
Professor of Chemistry and Biology.

CLARENCE S. SARGENT, D. D., B. A. (Dartmouth), B. D. (Yale).  
Lecturer on The Christian State.

ELIZABETH SPRAGUE (Massachusetts Normal Art School),  
Instructor in Art.

CHARLES A. ELLENBERGER (New England Conservatory of Music).  
Director of Fairmount College School of Music and Professor of Music.

ANDREW P. SOLANDT, B. D. (Oberlin), M. A. (McGill),  
Professor of the French Language and Literature. Director of Bible Study.

## OFFICERS AND FACULTY

(Continued)

---

SIEGEL A. BUCKBOROUGH, B. A. (Toronto and Harvard),  
Instructor in Physics and Chemistry.

\*  
Professor of Education and Normal Training.

ROBERT H. JUST (Pupil of Jacobsohn, Godowski and Kullak),  
Instructor on the Violin.

MARIE HAMMER (Cincinnati College of Music),  
Instructor on the Piano.

MRS. W. A. BOSWORTH (Cincinnati Conservatory of Music),  
Instructor on the Piano.

MAY WHIMS,  
Instructor on the Piano.

WINNIFREDE WOODSIDE METCALF (Emerson College of Oratory),  
Director of the Department of Physical Culture and Expression.

JENNIE L. COX, B. A. (Fairmount),  
Instructor in Latin.

CLARENCE E. TODD,  
Tutor in Spanish.

CORA LEICHHARDT,  
Instructor Commercial Department.

FREDERICK HAUCK,  
Superintendent of Buildings and Grounds.

FANNIE McCracken,  
Matron of Holyoke Cottage.

S. FRANK POOLE,  
Secretary to the Faculty.

---

\*Temporarily vacant. Duties distributed among other instructors.

## GENERAL INFORMATION

---

### LOCATION.

Wichita is a prosperous and growing city of more than 32,000 people, situated on the Arkansas river 230 miles southwest from Kansas City and 50 miles north from Oklahoma Territory. Four great railway systems converge here, the Santa Fe, the Rock Island, the St. Louis and San Francisco, and the Missouri Pacific. These systems give to Wichita railway connection on eleven different lines, with every part of the southwest. The city is, therefore, a very important commercial and industrial center, having a score of wholesale and jobbing houses in all lines of merchandise and two large beef and pork packing houses. Commercially Wichita is probably the most important town in Kansas.

The city is equally well located to become the chief educational center.

Fairmount College occupies a commanding position on a beautiful ridge overlooking the valley of the Arkansas, far enough from the business center of the city to insure quiet seclusion for study, but connected with the "downtown" district by means of an excellent electric railway service.

The elevation of the College and Wichita, 1450 feet above tide level, gives to the institution a climate of unusual healthfulness.

### HISTORICAL.

Fairmount Institute was organized and opened as a preparatory school in 1892. In 1895 it was reorganized as a College. In 1899 the College sent out its first class of graduates in the Liberal Arts.

### GENERAL PLAN.

Under the common title, Fairmount College, are united a first class preparatory, classical and English school (Fairmount Academy), and a

true College, whose courses of study and standards of instruction and scholarship are the same as those of the typical college of New England.

The Academy prepares students for the Freshman class in this College or other colleges and scientific schools, and for practical business, teaching, housekeeping and homemaking.

Three very full parallel courses of study in the College lead on to graduation and the Degrees of B. A., (Bachelor of Arts), B. S. (Bachelor of Science), and B. L., (Bachelor of Literature).

Students of both sexes and all races and creeds are welcomed and enjoy equal privileges.

For detailed statement of courses of study and methods of instruction in the Academy and in the College proper see subsequent pages of this catalogue.

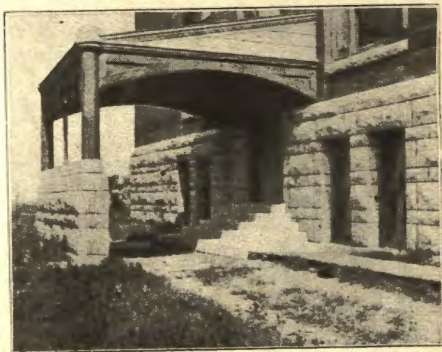
### RELIGIOUS INSTRUCTION AND WORSHIP.

Believing that reverent personal faith in the Deity, "in whom we live and move and have our being," is the root of essential morality in individual character, and that "Without God" human society is also "without hope" even in this world, the authorities of Fairmount College will seek in all proper ways to inculcate in their students the fundamental principles and duties of religion as given in the Bible. They hold that a genial religious influence like an atmosphere should pervade the school. The student of years in the institution should be recognizable by a stronger faith in God, by a quickened conscience in respect to moral relations, and by a higher moral standard of conduct, than when he entered. Unless such is the general result, sufficient warrant for the cost in labor and money in establishing a "Christian College" cannot be found.

All students and teachers assemble for morning devotions in the College Chapel each school day. Responsive reading from the Scriptures, concise comment or remark by the officer in charge, and the Union of all voices in devout praise to God in sacred song—all reverently conducted—help student and teacher in the joint work of the day.

The students are expected to attend public worship at least once each Sunday during term time.

There will also be a weekly Bible service for all the students. Exemption from these religious requirements, on conscientious grounds, may be obtained for students on application to the President by parent or guardian.



**PORTE-COCHERE**



**FRONT ENTRANCE**

## LIBRARY AND READING ROOM.

Following the excellent advice of one of our foremost American scholars to "make the gathering of a good library a first point in the work of founding a college in the West," at the end of its eighth year from organization, Fairmount College is now in possession of book-treasures, in bulk and practical value, superior to the library of the average Western College after a quarter century of successful progress. Our bound volumes number more than 21,000, and our unbound reviews, magazines and pamphlets are 30,000 or more.

The books have been thoroughly arranged and classified, using as a basis the Cutter "Expansive Classification" as developed by the Newberry Library of Chicago and the Library of Congress at Washington. They are readily accessible, students being encouraged to the freest use of the books. The cataloging of the library is proceeding at a good rate. The most important part of the library will be fully indexed. The system is a card catalog on the dictionary plan. By this system not only the books but a very large part of their contents are indexed in their proper alphabetical place. The catalog is thus not a mere list of books but a genuine index to a large collection of valuable material for study.

Every student is charged a library fee of fifty cents a term. The funds thus secured are used exclusively to purchase new books for the library.

Contributions of books, magazines, pamphlets, files of newspapers and public documents are respectfully solicited. In particular we want everything ever published in or about Kansas, or written by Kansas authors. Town or county histories of any part of the country and family genealogies will be equally welcome.

## SCIENTIFIC LABORATORIES.

The College has sufficient apparatus, instruments and appliances, all of the newest and best models, for instruction and good work in chemistry and biology. Particular mention may be made of the costly chemical balance, microscopes, microtome, etc., recently imported expressly for the College. Additional facilities will be provided as our classes advance in their course of study and require them.

## MUSEUM.

The College has the beginning of a museum. A valuable collection of marine invertebrates has been given by the Smithsonian Institution. About fifty well mounted birds and other valuable collections have been placed in the museum by Rev. H. B. Scott of Wichita. It is

earnestly desired that friends of the college contribute material for the increase of the collection. Specially desired are the fauna and flora of Kansas and fossils of all ages.

### PALESTINE MUSEUM.

Hon. Selah Merrill, LL. D., a noted orientalist and antiquary, for the second time United States Consul at Jerusalem, is now making for the College a representative collection of the Ancient and Modern coins, the woods, plants, rocks, utensils, costumes, etc., etc., found in the Holy Land. When complete, this museum is likely to be of unique value to all students of the Sacred Scriptures.

### LITERARY SOCIETIES.

Three prosperous literary societies are maintained by the students, viz: "Sorosis," by women of the College; "Philomathean," by women of the Academy, and "Webster," by men of the College and Academy jointly.

Weekly sessions of the societies for the production of original papers, discussions and declamations are held, and occasional public exhibitions given.

The united societies have an annual address during Commencement Week by some distinguished scholar or educator from abroad.

Rev. S. Parks Cadman, D. D., of Brooklyn, N. Y., is to be the orator for 1904.

The Ladies' Library Club, composed of resident ladies, has for its chief purpose the promotion of the growth of the College Library. The club dates from the early days before "College" organization took place, and much of the remarkable progress made in building up the library is justly attributed to the faith and persistent work of these noble women.

The club has fortnightly sessions for the rendition of a literary program, and for business.

### PHYSICAL CULTURE AND ATHLETICS.

Regular and systematic instruction and training in physical culture are afforded to all the students. Base ball and foot ball teams are in vogue, and general athletics are encouraged, as a legitimate and important part of our provision for the education of the young.

College "athletics" are under the direction of the "Athletic Association" of the students, supervised by the Faculty.

The Annual Field Day of the Association is one of the most important of our anniversaries.

## UNIVERSITY EXTENSION.

The Faculty of the College are prepared to undertake "University Extension" courses of instruction in any of the larger towns and cities of Kansas and Oklahoma whenever desired.

Courses of instruction under this head include General History, American History, Political Science, Economics, the Classics, Modern Languages, Anglo-Saxon, English Literature, Natural Science, Psychology, Pedagogy, etc., etc.

## SUMMER TERM.

Circumstances have till now deferred the execution of the plan for the Summer Term, but it is expected to become operative in June, 1904.

This term is designed to offer special advantages for teachers and intending teachers of the public schools, by affording opportunity to review branches of study required in examinations for county and state certificates; for persons who desire to attain graduation from the Academy or to a degree from the College, but who are debarred by circumstances from regular residence in the College during the usual collegiate year.

A "single" course will include five hours a week and a "double course" ten hours a week,—the latter enabling a good student to do nearly a year's work in some studies. Tuition charge, \$5 for a course for each student.

No class with less than five members organized, except at the discretion of the instructor.

Members of the regular College Faculty will have the Summer term in charge. The usual regulations of the College will be in force the same as other terms.

## SELF SUPPORT.

It is the purpose of the College to give all possible encouragement to young people of limited means, who are eager for the advantages of a liberal education. To a limited extent the College, or its friends, will afford remunerative employment to such students.

The Young Men's Christian Association of the College has appointed an "Employment" committee, which will do all it can in securing employment for such young men desiring work during school year as may apply directly to this organization. Such applications should be at once sent to Y. M. C. A., Fairmount College, Wichita, Kansas.

## BENEFICIARY FUNDS.

The Congregational Education Society of Boston will aid candidates for the ministry, who have advanced in their course to the beginning of the Sophomore year, to the extent of \$75 per annum. The children of ministers of all denominations are commonly admitted to the regular courses at a reduction of one-half the usual charge for tuition. Approved candidates for the ministry of any Christian church or creed may expect some concession in the usual charge for tuition.

Young people of intellectual promise and high character, in straitened circumstances, will always be aided to the extent of their tuition at least, when the necessity is understood.

## GENERAL REGULATIONS.

We have but few specific rules. All students are expected to be exemplary in morals and manners; each is placed largely on his own responsibility, and whatever hinders the best mental and moral culture, or violates one's obligations to instructor or fellow students, is prohibited. The attendance of those students only is desired who will make faithful use of the opportunities for education here afforded. Those unwilling to do this, whose spirit is found to be antagonistic to the methods and work of the institution, or who fall below grade in scholarship, will be dropped whenever the general welfare seems to require it, even though there be no offense worthy of suspension or expulsion.

Students may enter at any time; but it is very desirable that all be present promptly at the opening of each semester and remain until the close. Absence during term time, and especially from examinations, is permitted only for very urgent reasons.

No student is allowed to visit the room of a student of the other sex, and all Sabbath and evening association between the sexes except by special permission, is prohibited.

A record of the scholarship and deportment of each student is kept and reported to parent or guardian at the close of each term.

## BOARDING ARRANGEMENTS.

Furnished rooms for a limited number of young ladies can be had at Holyoke Cottage; Rugby Hall offers like advantages to young men. Good homes for students of either sex are provided in the families of citizens residing near the College, on reasonable terms. Rooms or houses for self boarding are for rent to students.

Mrs D. P. Brown has kindly consented to furnish a good home for a few gentlemen students at her residence, "Putnam Cottage," No. 1604 Fairmount Avenue.

### EXPENSES.

The College Year consists of 36 weeks, divided into two semesters of 18 weeks each.

Tuition, for the year, paid at entrance—College.....	\$32.00
Tuition, for the year, paid at entrance—Academy.....	27.00
Tuition, either semester—College.....	18.00
Tuition, either semester—Academy.....	15.00
Laboratory fees, chemistry, each semester.....	2.50
Laboratory fees, biology, each semester.....	1.50
Library fees, each semester.....	.50
Board, including furnished room, heat and light, but not laundry, at Holyoke Cottage, each week.....	3.25
Table board at Holyoke Cottage each week.....	2.50
Board in private families each week.....	\$2.50 to 4.00
Furnished rooms and board, including heat and light, but not per- sonal board, at Putnam Cottage, each week.....	4.00
Table board at Putnam Cottage.....	3.00
Table board in private families each week.....	\$2.00 to 3.00
Library fees for the year.....	1.00
Expenses for the College year, 36 weeks, from.....	\$138.00 to 200.00

At Holyoke Cottage no allowance will be made for absence less than one week in extent. Bills for board are reckoned by the week and not by the meal.

Instruction in chorus singing and elementary drawing, free

A library fee of fifty cents is required each semester from every student. Funds so received will be used for the purchase of new books.

For expenses for instruction in Physical Culture, Music, Elocution, Drawing, Painting, see those topics elsewhere in this catalogue.

Tuition is due on entrance. Board bills in Holyoke Cottage are due four weeks in advance. All other bills are to be paid on presentation. Tuition bills are made out for the full term, and no rebate will be allowed except for sickness which continues for a month or more.

All students entering College or Academy on scholarships of any kind must present their certificates to the Treasurer for indorsement at the time of entering.

Such certificates do not apply for instruction in Art, Music or Elocution, nor to instruction in business or physical culture beyond what is prescribed for all students.

## REQUISITES FOR ADMISSION.

Candidates for admission to the Freshman class, excepting in cases hereafter specified, must pass written examinations in the following studies, attaining a grade of 70 on a scale of 100:

**For the Classical Course**—English Grammar and Composition, Lockwood, United States History, Arithmetic, Physiology, Elementary Rhetoric, Plane and Solid Geometry, Latin Grammar, Latin Prose Composition, Caesar, 4 books, Cicero, 7 Orations, Vergil's Aeneid, 6 books, Greek and Roman History, Greek Grammar, Jones' Greek Prose Composition, 25 sections, Anabasis, 4 books, Iliad, 3 books, Drawing, Algebra to Logarithms, Physical Geography.

**For the Literary Course**—English Grammar, Composition, Lockwood, Elementary Rhetoric, Elementary Physics, Physiology, Arithmetic, Algebra to Logarithms, Plane and Solid Geometry, Latin Grammar, Latin Prose Composition, Caesar, 4 books, Cicero, 7 Orations, Vergil's Aeneid, 6 books, United States History, General History, Physical Geography, Elementary English Literature, German.

**For the Scientific Course**—English Grammar and Composition, Lockwood, Elementary Rhetoric, Elementary Physics, Physiology, Physical Geography, United States History, General History, Arithmetic, Algebra to Logarithms, Plane and Solid Geometry, Latin Grammar, Caesar, 4 books, Cicero, 7 Orations, Vergil, 6 books, English Literature, Botany, German and French (one year's study), Zoology, Drawing.

The examinations in English composition will include: (1), An exercise in the correction of sentences faulty in diction or construction, and (2), the writing of a brief essay on some subject previously announced. The subject for the essay at examinations in 1903 will be chosen from one of the following works: Shakespeare's Merchant of Venice, Milton's Comus and Lycidas, Longfellow's Evangeline, Webster's First Bunker Hill Oration, Irving's Tales of a Traveler, Hawthorne's Twice Told Tales, George Elliot's Silas Marner.

Graduates from the Academy are admitted to corresponding College courses without examination.

Certificates from approved High Schools and Academies will also be accepted in lieu of examinations.

Candidates for admission from other Colleges must bring certificates of unexceptionable standing.

Students not candidates for degrees may take collegiate studies under the direction of the Faculty.

## EXAMINATIONS.

All classes in all departments of the institution are required to be examined at stated periods in the studies pursued. These examinations are commonly in writing, and take place at the close of each term. A fee of \$1.00 will be charged for all examinations given out of regular order.

### STANDARD OF MARKING AND EXAMINATIONS.

Every student in every recitation and subject, and in all examinations, is "marked" by his teacher on a scale of 100. An average of 70 for the term, including the examination, is requisite for the student to maintain his standing in the particular class or subject.

### REQUIREMENTS FOR DEGREES.

Requirements for degrees will be found on page 18. Each candidate for a degree is required to complete the equivalent of 66 hours work; 37 hours of this work is prescribed and 29 hours elective.

### DEGREES.

Students, honorably completing any of the foregoing courses of study, will receive from the College diplomas entitling them to one of these "Degrees:"

The Classical Course, the Degree of B. A., Bachelor of Arts.

The Scientific Course, the Degree of B. S., Bachelor of Science.

The Literary Course, the Degree of B. L., Bachelor of Literature.

The fee for each of these "Degrees" is \$5 in advance; for graduation from the Academy, \$1.

The Master's Degree, corresponding to each of the foregoing Bachelor's degrees, will be conferred on graduates of this College, or of other Colleges, on the performance by candidates of the usual amount of scholastic work required by the best American colleges.

## DAILY SCHEDULE OF RECITATIONS

Hour	TUESDAY	WEDNESDAY	THURSDAY	FRIDAY	SATURDAY
8:15 to 9	1 French 2-A History 4 Latin 8-9 Math. Sociology	1 French 6 History 4 Latin	1 French 2-A History 4 Latin 8-9 Math. Sociology	1 French 6 History 4 Latin 8-9 Math.	1 French 6-7 Greek 2-A History 4 Latin 8-9 Math. Sociology
9 to 9:45	1 Botany 2d hf 1 Greek 5 Latin 3-4 Literature 1 Mathematics 2 Mathematics Philosophy 1 Zoology 1 hf	Astronomy 1 Botany 1 Bible 1st hf 3 Constitution 5 English 1 Greek 5 Latin 2 Mathematics 1 Zoology	1 Botany 1 Greek 5 Latin 3-4 Literature 1 Mathematics 2 Mathematics Philosophy 1 Zoology	Astronomy 1 Bible 1 Botany 3 Constitution 5 English 1 Greek 5 Latin 2 Mathematics 1 Zoology	1 Botany 3 Drawing 1 Greek 3-4 Literature 1 Mathematic 2 Mathematic Philosophy 1 Zoology
9:45 to 10:30	1 Chemistry 4-5 Greek 2 History 1 Latin 5 Literature 3 Mathematics 1 Physiology	2 Bible 2d hf 1 Chemistry 2 History 1 Latin 1-2 Literature 5 Mathematics 2 Philosophy	1 Chemistry 4-5 Greek 2 History 1 Latin 5 Literature. 3 Mathematics 1 Physiology	2 Bible 2d hf 1 Chemistry 2 History 1 Latin 1-2 Literature 5 Mathematics Philosophy	3 Drawing 4-5 Greek 2 History 1 Latin 5 Literature 3 Mathematic 1 Physiology
<b>CHAPEL 10:30 to 11:00</b>					
11 to 11:45	Biology 1 Civics 2d hf 2 Greek 3 English 2 Latin 6-7 Math. 1-2 Pedagogy Phys. Geog.	3 Bible 1 Civics 3 English 2 Greek 2 Latin Phys. Geog. 1-2 Pedagogy	Biology 1 Civics 3 English 2 Greek 2 Latin 6-7 Math. 1-2 Pedagogy Phys. Geog.	3 Bible 1 Civics 3 English 2 Greek 2 Latin 6-7 Math. 1-2 Pedagogy Phys. Geog.	Biology 1 Civics 1 Declamation 1 Greek 2 Latin 6-7 Math. 1-2 Pedagogy Phys. Geog.
11:45 to 12:30	1 Bookkeeping 1 Econom. 1st 1 Evidences 2d 1 English 1 German 2 German 6-7 Literature 1 Physics	1 Bookkeeping 2 Economics 1 English 4 French 1 German 6-7 Greek 8-10 Latin 1 Physics	1 Bookkeeping 1 Economics 1 Evidences 1 English 1 German 2 German 6-7 Literature 1 Physics	1 Bookkeeping 2 Economics 1 English 4 French 1 German 6-7 Greek 9-10 Latin 1 Physics	1 Bookkeeping 1 Economics 1 Evidences 1 English 1 German 2 German 6-7 Literature 1 Physics
12:30 to 1:15	1 Drawing 2 English 2 French 3 German Geology 3-4 History 3 Latin 4-5 Math. 3-5 Pedagogy Physiology	2 Drawing 4 English 3 French 3 Greek 3 Latin 3-5 Pedagogy	1 Drawing 2 English 2 French 3 German Geology 3-4 History 3 Latin 4-5 Math. 3-5 Pedagogy Physiology	2 Drawing 4 English 3 French 3 Greek 3 Latin 3-5 Pedagogy	2 English 2 French Geology 3 Latin 3-4 History 4-5 Math. 3-5 Pedagogy Physiology

NOTE.—The numerals preceding each subject designate the respective courses. Full statement of each course will be found on the subsequent pages. Courses not here given will be provided at opening of term.

## COURSE OF STUDY I The Academy

GENERAL PREPARATORY.			COURSE FOR YEAR	Arithmetic Des. Geography	Grammar U. S. History	Reading Drawing
<b>FIRST YEAR.</b>			<b>THIRD YEAR</b>			
	CLASSICAL	LATIN-SCIENTIFIC	ENGLISH	CLASSICAL	LATIN-SCIENTIFIC	ENGLISH
FIRST HALF	Bible Drawing Ele'y Algebra Grammar Latin Lessons Physical Geog.	Bible Drawing Ele'y Algebra Grammar Latin Lessons Physical Geog.	Bible Drawing Ele'y Algebra Grammar Physical Geog. Physiology*	Cicero General History Geometry Greek Lessons Lockwood	Cicero General History Geometry Lockwood Physics	General History Geometry Lockwood Physics
SECOND HALF	Civics Composition Drawing Ele'y Algebra Latin Lessons	Civics Composition Drawing Ele'y Algebra Latin Lessons	Civics Composition Drawing Ele'y Algebra Physiology*	Bible Cicero Geometry Greek Lessons Rhetoric	Bible Cicero Geometry Physics Rhetoric	Bible Geometry Physics Rhetoric
<b>SECOND YEAR.</b>			<b>FOURTH YEAR.</b>			
	CLASSICAL	LATIN-SCIENTIFIC	ENGLISH	CLASSICAL	LATIN-SCIENTIFIC	ENGLISH
FIRST HALF	Algebra Caesar Drawing General History Lockwood	Algebra Caesar Drawing General History Lockwood	Algebra Bookkeeping Drawing General History Lockwood	Eng. Literature Geometry German Iliad Rhetoricals Vergil	Eng. Literature German-Zoology Geometry Rhetoricals Vergil	Eng. Literature French German-Zoology Geometry Rhetoricals
SECOND HALF	Algebra Caesar Drawing General History Lockwood	Algebra Caesar Drawing General History Lockwood	Algebra Bookkeeping Drawing General History Lockwood	Am. Literature Arithmetic German Iliad Rhetoricals Vergil	Am. Literature Arithmetic Botany German Rhetoricals Vergil	Am. Literature Arithmetic Botany French German Rhetoricals

**COURSE OF STUDY II The College**  
**REQUIRED COURSES OF STUDY**

**FRESHMAN YEAR.**

CLASSICAL	LITERARY	SCIENTIFIC
Drawing I English II French or German III Greek IV Mathematics IV Latin IV	Chemistry IV Drawing I English II French or German III Mathematics IV Latin IV	Chemistry IV Drawing I English II French IV German III Mathematics IV

**SOPHOMORE YEAR.**

CLASSICAL	LITERARY	SCIENTIFIC
Bible II English II English Literature III Latin III or Greek III	Bible II English II English Lt. III Latin III or French or German II	Bible II Biology III or Mathematics IV. English II English Lt. III

**JUNIOR YEAR.**

CLASSICAL	LITERARY	SCIENTIFIC
Philosophy III	Philosophy III	Philosophy III

**SENIOR YEAR.**

CLASSICAL	LITERARY	SCIENTIFIC
Economics I½ Evidences I½	Economics I½ Evidences I½	Economics I½ Evidences I½

NOTE.—Roman numerals designate the number of hours required of each course throughout the year. In addition to these prescribed courses students must choose sufficient number of electives to aggregate 16 hours work for Sophomore, Junior and Senior years. For description of courses of study see following pages.

## DEPARTMENTS OF INSTRUCTION

---

### PHILOSOPHY.

President Morrison.

1. **Logic.**—Two hours. Second term. Required of Juniors. Jevons, *Lessons in Logic*.

The study of Deductive Logic, intended to make clear the difference between valid and false reasoning.

2. **Introduction to Philosophy.**—Two hours through the year. Elective for Juniors and Sophomores. An introductory course in the leading problems of Philosophy and their typical solutions. The aim is to point out and smooth the way of the College students from the exact and concrete studies of his earlier course to the consideration of the more abstract principles of philosophy. Intended to acquaint the student with philosophical methods and to introduce him to the literature of the subject. The instruction will be by lectures and discussions, supplemented by required readings. It is strongly advised that this course be taken by all who intend to elect any philosophical course during their Senior year.

3. **Psychology.**—Three hours. Second term. Required of Juniors. James.

A study of the facts and the laws of consciousness and their relations to the physical organism. The subject is treated from the standpoint of Natural Science, with a side glance at its immediate philosophical bearings.

4. **History of Philosophy.**—Three hours. Through the year. Elective for Seniors. Weber, *History of Philosophy*.

This course is mainly in Greek and Modern Philosophy, with a glance at the philosophy of the middle ages. The aim is not merely to present the successive philosophical systems in their relations to each other, but to consider their relation to the progress of civilization as well. It will be made as far as possible a culture course. The instruction will be by lectures, supplemented by text-book, and by private reading in the philosophers themselves.

## ENGLISH LITERATURE.

Professor Clough

### The Academy.

1. **Introduction to American Literature.**—Text. Fourth year. First semester. Two periods.

2. **Outlines of English Literature.**—Text. Fourth year. Second semester. Two periods.

**Classics.**—During the four years of the Academy, all of the classics for college entrance requirements will be studied.

### The College.

3. **History of English Literature.**—Library work. Sophomore year. First semester. Three periods.

4. **Study of the Epic.**—Faerie Queen. Paradise Lost. Study of the Essay. Bacon-Emerson. Second semester. Three hours.

5. **The Modern Novel.**—Text, Perry's Prose Fiction with a special study of Eliot and Thackeray. Junior year. First semester. Three periods.

6. **Romantic Movement.**—Wordsworth, Coleridge, Byron, Shelley and Keats. Junior year. Second semester. Three periods.

7. **Tennyson, Arnold and Browning.**—Senior year. First semester. Two periods.

8. **Shakespeare as a dramatic artist.** Moulton's text. Three of Shakespeare's plays will be studied. Senior year. Second semester. Two periods.

9. **A Study of the Drama.**—Class work based on the following plays: Midsummer Night's Dream, King Lear, Richard III, Hamlet. First semester. Two periods. Elective to all College students.

## ENGLISH.

Professor Clough

A thorough knowledge of the English language is of prime importance. Greater emphasis than ever will be placed on this study. The student will not only be taught the principles of the language but will be required to exercise the knowledge thus acquired by writing and correcting daily themes. Required through Academy, Freshman and Sophomore years.

### The Academy.

1. **Grammar and Composition.**—Five times weekly throughout first Academic year. Spelling twice each week.

2. **History of the English Language.**—Lockwood or some similar text will be used. Drill in spelling will be continued through the year. Three hours weekly during second Academic year and first half of third year.

3. **Elementary Rhetoric.**—Five hours during the third Academic year. One hour each week will be devoted to declamatory drill.

### The College.

4. **Rhetorical Science.**—The theory of Rhetoric based upon Genung's text, with weekly themes, is required during the Freshman and Sophomore years. Two periods.

## HISTORY AND POLITICAL SCIENCE.

Professor Isely

### History.

In the Academy instruction is given in

1. **United States History.**
2. **General History.**

In the College the following courses are offered:

3. **General Mediaeval History.**—Beginning with the Germanic Migration and continuing to the close of the Crusading period. Recitations, supplementary readings and reports by members of the class. Three hours; first half year. Sophomores.

4. **Modern History.**—The Renaissance and the Reformation, French Revolution, Napoleon, Rise of Russia and Prussia. History of Our Own Times. Three hours. Second half. Sophomores.

5. **English History.**—From King Alfred to the present time. Open to Juniors and Seniors.

6. **Research Work.**—Individual investigation; special reports. One hour. Open to Juniors and Seniors.

### Constitution.

1. **Civil Government.**
2. **English Constitution.**—Recitations, reports and lectures. Three hours. Second term. Juniors.
3. **Political and Constitutional History of the United States.**—Relation of the Colonies to England, Growth of Legislative Govern-

ment, Revolution, Declaration of Independence, the Confederacy, Adoption of the Constitution, Rise of Political Parties, the Bank, Slavery Question, Reconstruction, Recent Problems. Recitations, Reports, Special Study of Congressional Bills and Debates. Two hours. First and second terms. Senior year.

4. **International Law.**—Three hours. Second term. Open to Seniors.

#### Political Economy.

1. **Elementary Course.**—Investigation of the principles of Consumption, Production and Distribution. Study of Smith, Ricardo, Mill, and the later writers. Recitations, Reports, Essays. Three hours. First term. Required of Seniors.

2. **Financial History of the United States.**—Study of Colonial Currency, the National Bank, Monetary Standards, the Silver Question, Recent Problems. Open to those having taken Course 1.

3. **Principles of Sociology.**—Development of the Modern State, and of its Social Functions. Second term. Senior year. Three hours.

4. **Research Course.**—Special investigation of selected economic problems. Weekly conference with instructor. One hour. Open to Seniors.

#### PEDAGOGY.

1. **History of Education.**—The essential characteristics of the Asiatic, Greek, Roman, Mediaeval and Modern education are noted and the influence of each on civilization. Students will be required to make a careful study of leading educators, as Socrates, Pestalozzi and Herbart; also to show the origin, progress and termination of theories, systems and methods. Twenty weeks. Juniors.

2. **Philosophy of Education.**—1. This will be based upon a study of the faculties of the mind, and the order of the mental development. 2. The purpose and end of education in relation to the individual and society. Ten weeks. Juniors.

3. **Methodology.**—1. This includes the course of study in the district and graded schools; and, 2, the proper order of presenting the several subjects. 3. Special methods in Arithmetic, Reading, History, Geography and Grammar. Ten weeks. Seniors.

4. **School Management.**—1. Ends of education. 2. Organization and government of the school. 3. The course of study. 4. School incentives. 5. Punishment. 6. Moral Instruction. Ten weeks. Seniors.

5. **School Law.**—1. Origin of school law, national and state. 2. Educational provisions of the constitution of Kansas. 3. Laws

relating to the establishment and maintenance of all the educational institutions of the state. Ten weeks. Seniors.

**6. Teacher's Course in United States History.**—(Given by the Department of History as "3 Constitution").—A broad review of the subject; topical methods of instruction; each student required to study original sources. Map drawing and a study of the physical features of the continent as related to national progress. Careful analysis of the logical growth and development of the United States. Methods of presentation and teaching the subject; instruction as to sources and value of authorities; proper study of Congressional records, statistics and government reports. Given two hours per week throughout Senior year.

Seminars will be offered weekly during the year for a more careful study of educational questions. The students will have an opportunity for systematic visitation of the public schools of Wichita. The library contains 250 of the latest and best books on the subject of Pedagogy.

Finally Pedagogy is treated not only as a professional, but as a culture study. It aids us in educating ourselves as well as others, and it is the special effort of this department to inspire in its students a love for the highest and best education, and the noble work of the teacher.

During the Senior year candidates for Teachers' State Certificates are required to do ten weeks "actual practice teaching" under the direction of the Department of Pedagogy.

#### Teachers' State Certificate.

By vote of the State Board of Education in 1899, Fairmount College was placed on the accredited list of colleges; every graduate completing the collegiate course and taking all the so-called "professional" studies, described under the Department of Pedagogy, is entitled to receive from the State Board of Education a State Teachers' Certificate. In addition to the above requirements candidates for a State Certificate must have completed three years' Preparatory Latin.

### LATIN LANGUAGE AND LITERATURE.

Professor Clark, Miss Cox

#### The Academy.

**1 A. Latin Lessons.**—Five hours. First semester. Collar and Daniell's First Year Latin is used throughout the first semester. Required of all classical and literary students in Junior Preparatory year.

**B. Viri Romae and Caesar.**—Five hours. Second semester. About 25 selections from Viri Romae, and in addition the second book of Caesar's Gallic War. Exercises in writing Latin throughout the year. Required as in Course 1 A.

**2 A. Caesar, Gallic War.**—Five hours. First semester. Books I, III and IV. Bennett's Latin Composition, 14 lessons. Required of all classical and literary students in the Junior Middle year.

**B. Nepos and Ovid.**—Five hours. Second semester. Bennett's Latin Composition, 14 lessons. From six to ten selections from the lives will be read and about 1500 lines of Ovid. Requirements the same as in 2 A.

**3 A. Cicero, Cataline Oration.**—Five hours. First semester. Reading at sight. Bennett's Latin Composition, 16 lessons. Required of all classical and literary students in Middle year.

**B. Cicero, Archias, Manilian Law and Letters.**—Five hours. Reading at sight. Written translations into Latin based on the text read. Requirements as in 3 A.

**4 A. Vergil, Aeneid, Books I-III.**—Five hours. Prosody. Idioms. Reading at sight Latin Antiquities. Required of all classical and literary students in Senior Preparatory year.

**B Vergil, Aeneid, Books IV-VI.**—Also Vergil VIII or IX or Eclogues. Latin Literature. Requirements same as in 4 A.

#### The College.

**5. Livy, Cicero.**—Four hours. Books I and XXI of Livy with collateral study of Contemporaneous Roman History. Cicero, De Amicitia. Reading at sight. Prose Composition. Required of Freshmen, Classical and Latin Scientific.

**6 Plautus, Terence, Ovid.**—Four hours. The Mostellaria of Plautus, and Eunuchus of Terence. Selections from Ovid will be read the last part of second semester. Reading at sight. Requirements as in 5.

**7. Horace.**—Three hours. The Odes and Epodes will be read and a special study made of meters. Reports at stated intervals by members on subjects of interest to the class.

**8. Pliny's Letters.**—Three hours. Second semester. Attention will be paid to the study of the style and characteristics of the Literature under the Empire. Courses 7 and 8 are optional with Sophomore Greek for Classical students and optional with German or French for Latin Scientific students.

9. **Cicero's Letters.**—Two hours. First semester. Cicero's life and writings will be made a special study. Reading at sight. Private reading will be selections from Phaedrus. Elective for Juniors and Seniors.

10. **Horace.**—Two hours. Second semester. The Satires and Epistles of Horace, with special study of Roman Satire covering the entire period from Ennis to Juvenal. Reading at sight. Private reading will be the Germania of Tacitus. Elective for Juniors and Seniors.

11. **Catullus, Tibullus, Propertius and Ovid.**—Two hours. First semester. Special study of the Roman elegiac poets. Private reading will be the Epigrams of Martial. Elective for Juniors and Seniors.

12. **Vérgil.**—Two hours. Second semester. Teachers' course. Books VII to XII of Vergil together with his Eclogues and Georgies will be the basis of study. Private reading will be in Caesar, Bellum Civilis. Elective for Juniors and Seniors. 12, 13 and 14 given during year 1904-5.

13. **Seminar.**—Two hours. First semester. One hour each week will be devoted to the study of Roman Topography, being largely lecture work by the instructor. One hour to Latin writing on historical and argumentative subjects.

14. **Seminar.**—Two hours. Second semester. Roman Private Life will be the subject dealt with by the instructor. References will be given to augment sources and the lecture work supplemented by private reading. One hour during the semester will be given to writing and discussing Latin Theses. Courses 13 and 14 elective for Juniors and Seniors and required of all honor students in Latin.

## MATHEMATICS.

Professor Gavett

### The Academy.

1. **Elementary Algebra.**—Three hours, throughout the first year.
2. **Advanced Algebra.**—Five hours, throughout the second year.
3. **Plane Geometry.**—Five hours during the first semester, and three hours during the second semester of the third year.
4. **Solid Geometry.**—Three hours during the first semester of the fourth year.
5. **Higher Arithmetic and General Review.**—Three hours during second semester of fourth year.

### The College.

6. **Trigonometry and College Algebra.**—Four hours, first semester. Required of all Freshmen.

7. **Analytic Geometry.**—Four hours, second semester. Required of all Freshmen.

8. **Differential Calculus.**—Four hours, first semester.

9. **Integral Calculus.**—Four hours, second semester.

Courses 8 and 9 are optional with Biology for scientific students

10. **Solid Analytic Geometry.**—One hour, one semester. Course 10 must be preceded by Course 7.

11. **Theoretical Mechanics.**—Throughout the entire year. This course is for students intending to study engineering, or make a specialty of mathematics. Course 11 must be preceded by Courses 8 and 9.

12. **Quaternions.**

13. **Non-Euclidean Geometry.**

14. **History of Mathematics.**

15. **The Teaching of Elementary Mathematics.**

For Courses 12, 13, 14 and 15, hours and credit will be arranged with the instructor.

**Astronomy** is given as a three hour course during the first semester every other year. Not given in 1903. It should be preceded by Courses 6 and 7 in Mathematics.

### ENGINEERING.

Professor Gavett

#### Surveying.

1. **Lectures and Field Practice with Instruments.**—Three hours throughout the entire year.

2. **Topographical Surveying, Transit and Stadia.**—Two hours. courses in surveying must be preceded by Course 6 in Mathematics. The student should have had practice in the use of drafting instruments.

#### Civil Engineering.

1. **Graphic Analysis of Structures.**—Two hours throughout entire year. The course includes roof trusses, bridges and arches. Course I should be preceded by the first half of the College course in physics or by Course 11 in Mathematics. Ability to use drafting instruments is required.

2. **Engineering Design.**—Preceded by Course 1.
3. **Hydraulics**—Preceded by Courses 8 and 9 in Mathematics.
4. **Engineering, Theory of Construction.**—Preceded by Courses 8 and 9 in Mathematics.

For Courses 2, 3 and 4, hours and credit will be arranged with the instructor.

## GREEK.

Professor Kingsbury

### The Academy.

1. **Elementary Course.**—White's First Greek Book. Five periods. First semester. Required of all classical students in the Middle Preparatory year.
2. **Greek Lessons Completed.**—Xenophon's Anabasis, first book. Five periods. Second semester. Requirement as in 1.
3. **Anabasis**—Second and third and fourth books, with Greek prose composition based upon the Anabasis. Iliad, book one. Five periods. First semester. Required of all classical students in the Senior Preparatory year.
4. **Iliad**—Second, third, fourth and sixth books. Continuation of prose composition. Five periods. Second semester. Requirements as in 3.

### The College.

5. **Selections from the Attic Orators.**—Three periods. Greek prose composition and review of Grammar. One period. First semester. Required of all classical students in the Freshman year.
6. **Selections from Herodotus**, with lectures on the Greek Historians. Four periods. First nine weeks of second semester. Requirement as in 5.
7. **Odyssey**, four books, with a study of the Homeric world and the Homeric question. Four periods. Last nine weeks of second semester. Requirement as in 5.
8. 9. 10. **Greek Tragedy**—Agamemnon of Aeschylus, Antigone of Sophocles and Alcestis of Euripides. Lectures on the history and development of the drama among the Greeks. Three periods, throughout the year. Required of all classical students in the Sophomore year who have not elected Sophomore Latin.
11. **Demosthenes on the Crown**, with a study of the history and

development of Greek Oratory. Two periods. First semester. Elective for Juniors and Seniors who have completed the previous courses.

12. **Aristophane's Frogs.**—Lectures on the life and customs of the Greeks. Two periods. Second semester. Elective as in 11.

13. **Plato's Phaedo.**—Lectures on the history of Greek Philosophy. Two periods. First semester. Elective as in 11.

14. **Selections from the Lyric Poets**—Two periods. Second semester. Elective as in 11.

15. **New Testament.**—One period throughout the year. Elective, open to any who have had at least two years of Greek.

## GERMAN.

Professor Kingsbury

### The Academy.

1. **Elementary Course.**—Joynes-Meissner's German Grammar, German Reader. Five periods. First term. Required of all Senior Preparatory students and all Freshmen who do not present German for entrance to College. Composition, Conversation, Storm's Immensee, Hillern's Hoher als die Kirche. Five periods. Second term.

### The College.

2. **Schiller.**—Jungfrau von Orleans, Wilhelm Tell, Maria Stuart. Three periods. First and second terms. Elective for students who have completed Courses 1 and 2. Freshman year.

3. **Goethe.**—Iphigenie auf Tauris compared with the play of Euripides by the same name. Herman and Dorothea. Two periods. First term. Sophomore year. Elective for students who have completed Courses 1 and 2.

4. **Goethe.**—Faust, Part I. Two periods. Second term. Sophomore year. Elective for students who have completed Course 3.

5. **Lessing.**—Minna von Barnhelm, Emilia Galotti, Nathan der Weise begun. Two periods. First term. Junior year. Elective for students who have completed Course 4.

6. **Lessing.**—Nathan der Weise completed. History of German Literature based on Keller's Bilder aus deutschen literature. Two periods. Second term. Junior year. Elective for students who have completed Course 5.

## DRAWING.

Professor Sprague

With a view to helping those pupils who are unprepared in this line of work, Drawing is introduced into the first two years of the Academy Department, also for all Freshmen in the College course not having studied drawing previously in this school. The regular work is at first elementary and practical. Further work in this direction is provided for by a collection of good casts and materials for still life in light and shade and color. This work is optional.

A course in Mechanical Drawing will be open to those desiring to take the work.

The study of the "History of Arts," using Goodyear's text, will be taken up.

Text books, paper, pencils, colors, etc., will be provided by the pupils.

### Model Department.

1. Blackboard Drawing.
2. Illustrations of stories and familiar events, leading to drawing from each other, from live and stuffed birds and animals.
3. Color. Water color and pencils, for stories and designs.
4. Design. Simple Geometric forms, colored, cut and pasted into a design for decoration.

### Academy Work.

Two years' course. Time, two hours per week.

1. Solids..... { Cube.  
Cylinder.  
Triangular prism.
2. Elementary perspective.
3. Rendering.
4. Spacing.
5. Arrangement.
6. Design.
7. Color..... { Harmonies.  
Values.
8. Color from plant form.
9. Color applied to original design.

Second year. Time, two hours per week.

1. Solids..... { Ring.  
Square pyramid.  
Hexagonal prism and pyramid.  
Vase forms.

2. Objects based on above.
3. Flowers..... { Color.  
Pencil.
4. Design.
  - a. Natural flower form in color.
  - b. Elements found in natural forms.
  - c. Harmonious coloring and forms.
5. Original designs in form and color are required for: chair back, spoon, plate, wall of room. Designs criticised for unity, harmony and rhythm.
6. Historic ornament.

#### Freshman College Year.

Time, two hours' consecutively per week.

Text book: Cross' "Model Theory."

1. Drawing from theory, geometric solids and objects based on same.
  2. Perspective.
  3. Rendering.
  4. Light and shade.
- (Color and design undecided.)

All students in Academy and Freshman class will receive systematic instruction in Drawing, for which there will be no charge.

Students in the College classes may also receive instruction, for which a moderate charge will be made. Special students will be admitted on reasonable terms.

### BIOLOGY.

Professor Poole

The laboratory is well equipped with compound and dissecting microscopes, a microtome, and other apparatus for efficient work in Biology.

A small but well selected museum furnishes good material for illustrative purposes.

#### Botany.

1. **Introduction to Phanerogamic Botany.**—The object of this course is the development of the powers of observation. Required of Senior Preparatory students in the Latin-Scientific and English courses. Four hours. Second semester.

2. **Structural Botany. Cryptogams and Phanerogams.**—Four hours. Elective for College students. One year.

3. **Systematic Botany.**—Careful study of the orders represented in the local flora. Field work required. Open to those who have had 2. Five hours for one year.

### Zoology.

1. **Introduction of Zoology.**—Companion course of Botany 1. Four hours a week. Required of Senior Preparatory students in the Latin-Scientific and English courses.

2. **Systematic Study of Invertebrates.**—Four hours. One semester. Elective for College students.

3. **Comparative Anatomy of Vertebrates.**—Lectures and recitations five hours, for one year. Open to those who have had 2.

4. **Physiology and Anatomy.**—Three hours per week, second semester.

### CHEMISTRY.

Mr. Buckborough

The laboratory is furnished with benches, running water, hood, and sufficient apparatus and chemicals for efficient work.

1. **General Inorganic Chemistry.**—Lectures and recitations and laboratory, four hours per week for one year. Required of Freshmen.

2. **Qualitative Analysis.**—This course aims to make students proficient in the detection of the metals and acids. Three laboratory periods for one year. Open to those who have had 1.

3. **Quantitative Analysis.**—Gravimetric and Volumetric methods. Three laboratory periods for one year. Elective for those who have taken 1 and 2.

### GEOLOGY.

Professor Poole, Mr. Buckborough

1. **Elementary Physical Geography.**—Recitations five hours a week. Required of all first year Preparatory students.

2. **Geology.**—A general course in Dynamical and Structural Geology is offered to the Seniors and Juniors of the College. Three hours a week for one term. Those electing this course should have a general knowledge of Zoology and Chemistry.

### PHYSICS.

Mr. Buckborough

1. **Elementary Physics.**—In the Academy Physics is taught five times a week during the entire year. Physics is required for gradua-

tion in the English and Latin Scientific courses. The College has valuable apparatus with which the text is illustrated by means of experiments by both teacher and class.

2. **University Physics.**—In the College a course in University Physics is offered five times a week throughout the entire year. Given in 1903-4. Not given in 1904-5.

## FRENCH LANGUAGE AND LITERATURE.

Professor Solandt

The object sought is to secure a thorough knowledge of French that it may be spoken fluently, written correctly, and understood readily when heard spoken.

To secure this end each class is conducted in French. As far as practicable the English is not used in the recitations; questions and answers, or any conversation; also written or oral examinations and reviews, are carried on in French. Authors are read in the original, and translation into English is only incidental.

In this way an earnest student can, before the end of the first year, carry on almost any ordinary conversation in French. Students are urged to use the French as often as possible, just as they do their mother tongue.

### The Courses are as Follows:

1. **First Year.**—Five hours a week. Required in Scientific and in Literary Courses, and elective in Classical Course. *Grammaire par Noel et Chapsal*, and daily exercises of English into French and a special course in the irregular conjugations. First term.

French reading, taking up short stories by Chotel, Rameau, Coppee, Arene, Clieneviere, France, Halevy, Blache, Theuriet, and other modern authors. Also Maupassant, Normand, Forge de Nion, Daudet, Laut, Montjoyeux, Rebrac. These are also taken in the English for translation into French. Portions of the New Testament are also translated into French. Second term.

2-3. **Second Year**—Those who are ready for second year in French can take the following three times a week, electing the course either in Freshman or Sophomore year:

Modern French Prose. Essayists: Renan, "Pages Cnoisies," Sainte Beuve, Selected Essays; and others. Modern French Plays. *Cyrano de Bergerac*, Edmond Rostand, Balzac's *Eugenie Grandet*. First term.

Classic French Plays. *Cornelle*, Racine, Moliere, Voltaire. Second term.

46. **Third Year.**—Students having had 1, 2 and 3 can take the following electives two times a week:

Modern French Plays. Hugo's *Hernani*, *Ruy Blas*, Rostand's *L'Aiglon*.

Studies on the origin and formation of the French Language considered historically.

A Course in Old French. Studies from *Gargantua of Rabelais*, and essays from *Montaigne* and others.

## BIBLICAL HISTORY AND LITERATURE.

Professor Solandt

The study of the Bible has asserted its right to a place in the College curriculum; a liberal education should comprise some thorough Biblical course. The following courses are arranged to meet the requirements of the general student body; they are designed to furnish that general acquaintance with the social, political, literary and religious material of the Bible which every educated person should have, and to prepare those who intend to become religious teachers for further, more technical study:

The following courses will be given:

1. **Introductory Course in the Old Testament.**—Intended to familiarize the student with the contents of the Old Testament. Two hours a week, first half year. Required of First Year Students in the Academy.

2. **Introductory Course in the New Testament.**—Intended to familiarize the student with the contents of the New Testament. Two hours a week, second half year. Required of Third Year Students in the Academy.

3. **The Teachings of Jesus, Paul and the Hebrew Prophets.**—Intended to furnish the student with a comprehensive knowledge of the contents and character of the teachings of Jesus; to help him to understand Paul's contribution to Christianity; and to trace the development of the Hebrew religion, considered as the historical antecedent of Christianity. Two hours a week throughout the year. Required of Sophomores.

4. **Hebrew and Contemporaneous History.**—The beginning of history in Egypt and Babylonia will be briefly surveyed. The Hebrew nation and literature will be studied from the earliest times to the fall of Jerusalem in 70 A. D. Kent's histories will be used as texts. Three hours throughout the year. Elective.

**5. Christian Evidences.**—The foundations of the Christian faith will be studied with reference to current scepticism. Three hours, last half year. Required of Seniors.

### SPANISH.

Mr. Todd

Since the recent addition of Spanish territory to the national domain a good knowledge of the Spanish language has become essential to many. Special instruction will be given in Spanish to all such as desire this course. An extra charge will be made for this course at the rate of five dollars per term.

### COMMERCIAL DEPARTMENT.

Miss Leichhardt

#### Business Course.

No education is complete without a thorough knowledge of the forms and principles of the business world.

The advantages of attending a Commercial Department in connection with a college are many. The students have the privilege of the library and reading room, the literary societies and the association with college people is found to be very beneficial.

The object of this course is to give the student a thorough training in the science of accounts and in the preparation of business papers. A good knowledge of the common branches is necessary for successful work in this department. Students deficient in English have the privilege of qualifying with regular classes in the English course. This work for the coming year will be under the direction of Prof. Roulet.

**1. Bookkeeping.**—Packard's Method of teaching; Single Entry, Complete; Single Entry for Grocers and Market Men; Double Entry; Journalizing; Posting; Closing Ledger with Balance Sheets; Partner Admitted; Wholesale; Commission; Manufacturing; Corporations, etc.

**2. Penmanship.**—Movement Exercises; Classification and Analysis of Letters and Figures and combination into exercises; Movement Exercises continued; Business Letter Writing.

**3. Shorthand and Typewriting.**—Tuition is free in Bookkeeping and Penmanship. A moderate charge will be made in instruction in Shorthand and Typewriting.

## SCHOOL OF MUSIC.

### Faculty.

NATHAN J. MORRISON, President.

CHARLES ALFRED ELLENBERGER, Director and Professor of Music.

Graduate New England Conservatory of Music, 1884; Graduate Student Boston and New York, 1895-7; Director School of Music, Ripon College, 1884-8; Private teaching, organist, and oratorio and choir director, Knoxville, Tenn., 1888-90; Director School of Music, Tompkinson Seminary, and organist, oratorio director, etc., Harrisburg, Pa., 1890-7; Director of Music State University of West Virginia, 1897-1902.

ROBERT H. JUST, Instructor on Violin.

Mr. Just is a highly trained and versatile musician. Finishing a course in violin at the Chicago Musical College, 1889-93, with Ohlheiser, Jacobsohn and Dr. Louis Falk, and piano with Max Kramm, he became director of the violin department of the Quincy, Ill., Conservatory of Music, 1893-4, holding similar position in the Breeming-Moser School of Music in Memphis, Tenn., and continuing his studies in Germany with Dr. Franz Kullak, Leopold Godowsky and C. Kistler. From this work he has just returned, bringing with him to the Fairmount College School of Music up-to-date ideas and methods, fresh from the great teachers of Europe.

MARIE HAMMER, Instructor on the Piano.

Miss Hammer is a talented and accomplished musician with a charming personality. Although graduated in piano and voice only last year from the Cincinnati College of Music, she has had a successful teaching experience of several years, and during the past year, 1902-3, has been at the head of the piano department of the San Antonio Female College. She is familiar with the latest approved methods of instruction and will be a valuable aid to the Fairmount College School of Music.

MRS. W. A. BOSWORTH, Instructor on the Piano.

Cincinnati Conservatory of Music, a pupil of the noted pianist, Henri G. Andres, and a very successful teacher of the piano for many years in Wichita and elsewhere.

MAY WHIMS, Instructor on the Piano.

Graduate Teachers' Course, Kansas State Normal School; two years of successful experience in teaching the Piano in Fairmount College.

### Special Advantages.

Many advantages accrue to the student in a School of Music connected with a college. Opportunities are afforded of studying in the various other departments, thus securing to the Music student a symmetrical education, literary and scientific, as well as musical. On the other hand, the existence of a department of Music affords advantages in musical training to the students in all the other departments.

### Time Required to Complete a Grade.

Attention is called to the fact that the time required to complete a grade depends upon the student's talent, age, previous instruction, and amount of daily practice. With good health and thoroughly systematized work, a grade (three courses) should be completed in a year.

### Requirements for Diploma and Certificate.

A course in sight reading, memorizing, and technical work is followed through all the courses. A knowledge of Harmony, Theory and Musical History is essential to an intelligent interpretation of Music. Elementary study in these three branches is required for completion of the third grade. Students completing the fourth grade will be entitled to a certificate. A candidate for a diploma must complete the required courses of study of some instrument or Voice, together with two courses in Harmony, passing satisfactory examinations thereon, and must perform in public during the last year of study an entire concert program to test his or her ability to interpret correctly the different schools of composition. Candidates for a diploma in Voice Culture, in addition to the above, must satisfactorily complete the first two grades in the Piano course, and at least two courses in German and Italian.

Candidates for a fourth grade certificate must pass a satisfactory examination in Sight Reading, Memorizing, Technique, Musical History, and have taken at least one course in Harmony.

### Recitals.

A very necessary part of a student's education is the development of confidence, which can only be acquired by appearing occasionally before an audience. To meet this need, Students' Recitals have been established, some of which are open to the public, others only to the intimate friends of the participants. There are also Faculty Recitals and Classroom Recitals, at which different styles of compositions are analyzed and rendered, tracing the historic development from the Classic to the Romantic period.

### Tuition.

Tuition Per Quarter of 10 Weeks, Two Lessons Per Week, 30 Minutes Each:

Piano .....	\$20.00
Piano (Mrs. Bosworth) .....	12.50
Piano, Miss Whims, 2 45-min. lessons a week, ..	12.00
Voice Culture .....	20.00
Violin, and Viola, each .....	20.00
Mandolin, Guitar, and Banjo, each .....	10.00
Harmony, private lessons .....	20.00
Pipe Organ, two times a week, 45 minutes .....	30.00
Wood, and Brass, Wind Instruments .....	10.00
Piano, three lessons a week, 30 minutes .....	30.00
Piano, one lesson a week, 45 minutes, .....	15.00
Piano (Miss Whims) .....	10.00
Voice Culture, three lessons a week, 45 minutes.	30.00
Voice Culture, one lesson a week, 45 minutes..	15.00
Choral Society, each quarter .....	1.00
Analysis and Sight Singing .....	1.00

Pianos for practice one hour per day will be furnished at \$3.50 per quarter; two hours per day, \$6.00 per quarter; three hours per day, \$7.50 per quarter. Clavier practice, one hour per day, \$2.00 per quarter.

All tuition and other fees are payable in advance to the Director of the School of Music.

#### Free Advantages.

The recitals and concerts by the Faculty and advanced students of the School of Music are all free to students of the College.

The Choral Society, Glee Club, Women's Chorus, the Military Band, Orchestra, and Mandolin, Guitar and Banjo Clubs are all open to students of the School of Music and of the College who are competent to enter them.

The Analysis and Sight-Singing Class is free to all students of the School of Music and of the College.

To encourage students of the School of Music to pursue studies in other departments of the College, reduced charges for tuition in such departments will be granted on approval by the College Faculty.

#### Courses of Instruction.

All the courses here announced are given every quarter, and may be begun at any time during the year, as the instruction is largely private.

## Piano.

Mrs. Bosworth, Miss Whims.

1, 2, 3. **First Grade.**—Emery's "Foundation Studies;" Studies by Gurlitt, Biehl, Bertini; Lynes' "Advancement Studies;" Compositions by Reinecke, Rhode, Emery, Lynes, Kullak, and others.

4, 5, 6. **Second Grade.**—Studies by Czerny, Loeschorn, Heller, Krause, Clementi's Sonatinas; Kunz's Canons; "Schumann Album for the Young;" Compositions by Krause, Kullak, Emery, and other modern writers.

7, 8, 9. **Third Grade.**—Czerny's "Forty Daily Studies;" "Octave Studies" by Turner and Kullak; Bach's "Little Preludes and Fugues," and "Two Part Inventions;" Easier Sonatas of Haydn and Mozart, Mendelssohn's "Songs Without Words;" Compositions by Godard, Schumann and others.

10, 11, 12. **Fourth Grade.**—Moscheles' opus 70; Kullak's "Octave Studies;" Clementi's "Gradus ad Parnasum;" Bach's "Suite," and "Three part Inventions;" Sonatas by Haydn, Mozart, Beethoven; Compositions by Chopin, Schumann, Mendelssohn, Raff, Moszkowski, Schubert, Greig, and others.

13, 14, 15. **Fifth Grade.**—Chopin's op. 10 and 25, and Preludes; Bach's "Preludes and Fugues;" Sonatas by Beethoven; Concertos by Beethoven, Mozart, Mendelssohn; Compositions by Liszt, Henselt, Chopin, Weber, and others; Concertos for two pianos.

## Organ.

Professor Ellenberger.

Organ students are expected to finish at least the first three grades in Piano before beginning Organ work.

1, 2, 3. **Third Grade.**—Stainer's "Organ Primer;" Whiting's "First Studies;" "Rink-Best Organ School," Book III; Bach's "Easy Preludes and Fugues;" Whiting's "The Organist;" Hymn Tunes and Registration; Compositions by Thayer, Silas, Volckmar, Guilmant, Lemmens, and others.

4, 5, 6. **Fourth Grade.**—"Rink-Best Organ School," Book IV and V; Bach's "Preludes and Fugues;" Accompaniment; Eddy's "Church and Concert Organist;" Anthems; Mendelssohn's Sonatas; Compositions by Guilmant, Merkle, Bach, and others; Whiting's "Twenty Preludes and Postludes."

7, 8, 9. **Fifth Grade.**—Bach's "Preludes and Fugues;" Sonatas by Mendelssohn, Guilmant, Merkle, Rheinberger; Compositions by modern composers.

## Voice.

Professor Ellenberger.

1, 2, 3. **First Grade.**—Breathing, control of throat, jaws, tongue, lips, etc.; tone placing; dictation exercises for special needs of individual voices; selected technical exercises; English Ballads and Songs.

4, 5, 6. **Second Grade.**—Breathing, tone placing, dictation exercises with selected technical exercises from Marchesi, Bordesì, Nava, Panofka, Concone; English Ballads and Songs; German Lieder.

7, 8, 9. **Third Grade.**—Breathing, tone placing, dictation exercises, with selected technical exercises from Bordesì, Marchesi, Sieber, English and Italian Songs; German Lieder; English Oratorio; Concert Songs.

10, 11, 12. **Fourth Grade.**—Dictation exercises, with selected technical exercises from Bordogni, Sieber, Marchesi, Lamperti, etc.; English Oratorio; Italian and German Operatic Selections; German Lieder; Concert Songs.

13, 14, 15. **Fifth Grade.**—Dictation exercises, with advanced technical exercises from Bordogni, Marchesi, Lamperti, Sieber, etc.; English Oratorio; Italian, French and German Opera; Bravura Singing.

## Violin.

Mr. Just.

1, 2, 3. **First Grade.**—Tour's "Primer;" exercises in the First Position; development of tone; Pleyel's duets, opus 8.

4, 5, 6. **Second Grade.**—Schrädieck's "Technical School," Book I; First, Second and Third Positions; Kaiser's "Studies," opus 20; Pleyel's duets, opus 48; Solos in First Position.

7, 8, 9. **Third Grade.**—Schrädieck's Exercises in the Higher Positions; Kreutzer's Etudes; Pleyel's duets, opus 59; Fantasias by Singelee, Alard, etc.; Airs Varie, DeBeroit.

10, 11, 12. **Fourth Grade.**—First Part of Fiorillo's Etudes; Maza's duets, opus 71; Krommer's Etudes, opus 22; Concertos by DeBeroit; Solos by Hauser, Weinauski, etc.

13, 14, 15. **Fifth Grade.**—Fiorillo's Etudes continued; Fantasias by Vieuxtemps, Alard, etc.; Concertos by Mendelssohn, Beethoven, Bruch, Sarasate.

Advanced students may study ensemble works in conjunction with pupils from the Piano department. They are also admitted to the orchestra.

### Guitar, Banjo, and Mandolin.

In response to the demand growing out of the popularity of these instruments, courses are offered in each. Special attention is given to the development of a systematic fingering for both hands, tone, touch and accurate execution.

Text-books for Guitar: Holland, Carcassi, Carulli, Sor.

Text-books for Banjo: Dobson, Stewart, Henning.

Text-book for Mandolin: "Branzoli's Method."

Selected Solos.

### Wood and Brass Wind Instruments.

#### Equivalents for the Foregoing.

The courses outlined for the various branches are simply intended to represent, in a general way, the character of each year's work. It is not intended that each student shall take all of the studies mentioned in the branch he wishes to pursue, and equivalents are liberally used to suit individual cases.

### Harmony.

Professor Ellenberger, Mr. Just.

A thorough knowledge of elementary Harmony is absolutely essential to every musician, whether artist or amateur. The School of Music offers a course of study covering one year, which includes a knowledge of intervals and scales, formation and progression of chords, treatment of suspensions, open harmony, etc., with practical work in harmonizing chants and chorals, and analyzing simple compositions. Emery's "Elements of Harmony" is the text-book.

1. Intervals, scales, formation and progression of common chords, with their inversions; seventh chords, modulations, harmonizing bass progressions, close harmony.

2. Modulations, Suspensions, Open Harmony, Appoggiatura, and passing notes, Organ point, harmonizing melodies.

3. Harmonizing Melodies, Double Chant, Chorals, etc.

4. Counterpoint and Composition.—Mr. Just.

### General Announcements.

Students may enter the School of Music at any time, but it is greatly to their interest to enter, as far as possible, at the beginning of the quarter.

There will be no deduction for lessons missed by students, except in cases of prolonged illness.

Sheet music is furnished—the best publications only—at a liberal discount.

Students entering the School of Music within the first three weeks of a quarter will be charged for the full quarter; after that time, for the remainder of the quarter, and one week additional.

Students of the School of Music are not allowed to take part in public programs, or in musical organizations, without the consent of their respective teachers, and the Director of the School of Music.

All music students are expected to attend the regular Students' Recitals, and to take part in them whenever so assigned.

All music students are expected to identify themselves with the various musical organizations of the school, and are required to enter any to which they are assigned by the Director of the School of Music.

Students who are admitted to the Choral Society, Glee Clubs, Orchestra, Mandolin Club, etc., are required to purchase whatever music is needed. Tuition free.

Every music student is expected to attend all concerts given under the auspices of the College.

It is expected that all students will take sufficient work—literary, or music, or both—to occupy their entire time.

All correspondence regarding this department should be addressed to

C. A. ELLENBERGER,  
Director of the Fairmount School of Music,  
Wichita, Kansas.

#### Note by the President of the College.

Professor Ellenberger brings to his present engagement the ripe fruits of extended musical training in the best American schools and of much successful experience as an instructor and director of music. His brilliant work here, since his accession to Fairmount College last Autumn, in organizing the Department of Music, training classes of students and arousing public enthusiasm for his art, is the sure pledge of success in developing his far-seeing plans for a noble school of music in Wichita. No pains will be spared by the Director of the School of Music and the Trustees of the College to make this the foremost school of music in the Southwest. To this end only specialists, trained in the best schools of music in the world, will be employed, each instructor restricting his work to his own specialty. Students of music here will also enjoy the great advantage of close association with large numbers of enthusiastic students in the literary and scientific departments of the college, access to the treasures of the large College Library, and living in an atmosphere of intellectual culture.

## DEPARTMENT OF PHYSICAL CULTURE AND EXPRESSION.

WINNEFREDE WOODSIDE METCALF, Director.

Mrs. Metcalf is a graduate of the Emerson School of Oratory, Boston, in which institution she was also an instructor for two years. For two years she was professor of oratory in the Union Female College, Eufaula, Ala.; for two years assistant in the Department of Oratory of the Kansas State Agricultural College, having also full charge of the physical training of the young ladies of the College during the same period. For the past eight years she has taught in private schools, in State and other Chautauquas, summer normal schools and privately. Mrs. Metcalf is also well-known as a public reader in many parts of the country.

### Aim.

The purpose of this department is to prepare the student to easily forcibly and effectively express his thoughts, feelings and purposes to the end that he may become a more helpful factor in society. Knowledge is the material and expression gives the best use of this and opens the door to success and power.

The work is strictly scientific and practical and in line with approved modern pedagogical methods. It is evolutionary in character, that is, it is an unfoldment from within outward. All dictation of mechanics is avoided and the pupil is encouraged to express himself in accordance with natural law.

### Courses.

Three courses will be presented, namely: Physical Culture, Voice Culture and Rendering.

#### Physical Culture.

This will consist of free exercises designed to cultivate health, strength, grace and expressiveness in the body, and to make it a willing reporter of mental states. A systematic drill will be given in physical exercises throughout the course.

#### Voice Culture.

The voice is nothing in itself. Its value and usefulness come from its fitness to represent what the mind conceives. A logically arranged system of voice exercises, adapted to the speaking voice, furnishes the basis for the drill in this course.

#### Rendering.

This consists of class drill in recitation from the works of the best authors, arranged so as to call out the activity of the mind in the

natural order. The work proceeds from simple to complex in a progressive arrangement. The student is brought into sympathy with the noblest sentiments expressed in the best language and is taught to communicate these to others.

The work of most other departments is that of accumulating knowledge. The oratorical department, while not neglecting this, emphasizes the ability to **give**, thus enabling one to effectually **use** whatever knowledge he may possess.

From time to time talks and informal lectures will be given on various phases of the philosophy underlying the work of the department. This department will also prepare students for the public exercises of the College, thus furnishing extra personal drill on special recitations and original parts.

Charges for tuition in the Department of Physical Culture and Expression will be made known to the students by the Director at the opening of the College year in September.

### LECTURES.

Rev. C. S. Sargent, D. D., will give during the year a series of lectures on "The Christian State," to the students at morning chapel.

A series of familiar lectures on practical topics will be given during the year by prominent business and professional men from a distance. The list of speakers is not yet complete. The following gentlemen permit their names to be announced for this service:

Edward D. Kenna, Esq., V. P. of the Santa Fe System, Chicago, Ill.

Newell C. Knight, Esq., Banker, Chicago, Illinois.

Hon. Eugene N. Foss, Manufacturer, Boston, Mass.

Hon. Herbert Knox Smith, State Senator, Hartford, Conn.

Hon. Charles S. Gleed, Lawyer, Topeka, Kansas.

Hon. Chester I. Long, U. S. Senator, Medicine Lodge, Kansas.

Rev. Edward F. Williams, D. D., Chicago, Illinois.

### HONORS FOR SUPERIOR EXCELLENCE IN SCHOLARSHIP.

College Honors for excellence in scholarship are granted in accordance with the following principles:

1. Preliminary Honors at the end of the Sophomore Year, in any branch which shall have been specified by the student not later than the Spring term of the Freshman Year; also at the close of the Senior Year to students applying for them not later than the Winter term of the Junior Year.

2. Final Honors at the close of the Senior Year in continuation of work undertaken for Preliminary Honors.

3. Honors are granted only to such students as have attained to a grade of not less than 90 in their special branches of study.

The amount of work for honors is determined by the instructor in each department. No student is permitted to study for Honors without the consent of the Faculty.

During the year 1902-1903 honors were conferred for excellency in Latin on Jennie Cox, Lynette Furley and Vera Taft; for excellency in Greek on Lynette Furley; for excellency in English Literature on Annie Jobs and Mary Jobs; for excellency in Higher Mathematics on Harold Morrison.

#### BENEFICIARY SCHOLARSHIPS.

The Joanna S. Morrison Memorial Scholarship Fund of six hundred dollars, the annual income of which is to be applied to the payment of some worthy student of the College.

The Della M. Smoke Scholarship Fund of six hundred dollars, in grateful memory of a beloved Professor of Latin in the original Faculty of the College, and provided by her friends and former students, the annual income of which is to be applied to the payment of the tuition fees (1) of a blood relative of Miss Smoke, and, in default of such relation, (2) of any worthy student, preference being shown to "the crippled."

#### PRIZES.

"The Paul Roulet Memorial Cross" of gold, in memory of the late Professor Roulet, to be awarded annually to the student in the Department of the French Language who presents the best thesis in French on an assigned subject. The Memorial Cross is provided by Dr. Alfred Roulet of Chicago, Ills.

"The Greek Prize" of twenty dollars in money to be awarded annually to the best scholar in Greek of the Sophomore Class. Provided by an "Eastern friend of Fairmount College."

## WOMAN'S DEPARTMENT

### Officers.

Miss Flora C. Clough, B. L., Dean.

### Advisory Board.

Pres. Mrs. Mabel Arnett.	Mrs. Hiram Imboden.
Sec. Mrs. Hugh du Bois.	Mrs. Paul Roulet.
Treas. Miss Flora Clough.	Mrs. W. H. Isely.
Mrs. N. J. Morrison.	Mrs. Lloyd B. Ferrell.
Mrs. L. S. Carter.	Mrs. C. S. Sargent.
Mrs. Henry Harding.	Miss Edna Hunter.

Miss Fannie McCracken, Matron.

In general, women as students in Fairmount College enjoy precisely the same advantages as men; have like liberty of choice of studies; are subject to the same regulations and discipline; may attain to the same emoluments and honors.

The Dean of the Woman's Department resides and has her office in Holyoke Cottage, near the College, at the corner of Sixteenth street and Holyoke avenue. Young ladies from abroad are recommended to reside with her in Holyoke Cottage. Every possible pains will be taken by the dean and her assistants to make a refined Christian home for the daughters of our patrons. The five years happy experience here, added to the success of many years elsewhere in similar work by Miss Clough, enables the management of the College to give parents the amplest assurance that their daughters will receive at Fairmount the best possible care.

For charges, tuition, etc., see expenses on page 13.

Each student at Holyoke Cottage will be charged 75 cents a week for room rent and \$2.50 for board, payable by the month in advance. No allowance made for absence for less than one week. Bills for table board are reckoned by the week and not by the meal. The laundry will be provided by the student or charged at actual cost.

The rooms at Holyoke Cottage will be neatly furnished, and warmed by hot air furnace. Bedding, except mattress, will be furnished by the students, and also towels and napkins. Every article of clothing should be clearly marked with the owner's name.

Our patrons are recommended to place moneys for the use of their daughters, especially if young, in the care of the Dean, who will see that it is properly expended and accounted for. It is not required that

young women should reside with the Dean at Holyoke Cottage. Excellent accommodations at very reasonable rates can be had in private families near by. Arrangements can readily be made for boarding in "clubs," or for self-boarding, the College giving all proper assistance to promote this economical method of boarding. It is desirable, however, that all young women intending to enter the College should confer with the Dean personally or by letter before making arrangements for boarding.

Young ladies desiring to communicate with Miss Clough respecting entering the College should address her as "Dean of the Woman's Department, Fairmount College, Wichita, Kan." Their communication will receive prompt attention.



**HOLYOKE COTTAGE**

## FAIRMOUNT ACADEMY

---

The Academy is an integral part of the general educational plan of the institution. In the ideal steadily kept in mind by the management, the Academy is to be developed, as rapidly as financial resources and patronage will warrant, into a classical and English secondary school of the highest rank, like Phillips Academy, Andover, Mass., and the Lawrenceville School in New Jersey, together with certain departments of education specially demanded by our geographical environment. The function of such a school is, (1) To prepare students for admission to the Freshman class in the best American colleges; (2) To prepare them for admission to the best technical and scientific schools; (3) To fit for the duties of life a numerous class of young persons, whose age or other conditions seem to debar them from the advantages of a full course of liberal training in the college or technical school.

To those three educational functions, characteristic of the class of schools to which Phillips and Lawrenceville belong, we need to add, in order to meet the wants of our environment, ample provision for the best training of teachers and for education in the general methods of doing business.

For the best results the Academy, while deriving important advantages from juxtaposition and association with the College, should have its own separate equipment in buildings, its own faculty of instructors, methods of instruction and training, administration, government and institutional life. Toward this end we shall advance as rapidly as our own growing resources will allow. But for the present the management and instruction of the Academy are necessarily combined with those belonging to the College.

A committee of the College Faculty will have in hand the administration of the Academy.

On a previous page are given in outline the courses of study and instruction at present prevailing in the Academy.

It is to be understood that statements as to government, administration, expenses, and general facilities of instruction given on preceding pages, under the head of "General Information," apply to the Academy as well as to the College proper.

## CONTRIBUTIONS TO THE LIBRARY DURING THE YEAR 1902-1903

Name.	Residence.	Books
Mrs. Sarah K. Bolton,	Cleveland, O.	1
L. Bonaman,	Philadelphia, Pa.	1
Prof. C. P. Clark,	City	1
Dr. Furley,	City	9
Prof. W. H. Laely,	City	2
Mrs. S. C. D. Putnam,	City	1
Thomas W. Lawson,	Boston	1
Longmans, Green & Co.,	New York	1
Rev. G. S. Ricker,	City	192
Pres. N. J. Morrison		17
Mrs. Sarah L. D. Robinson,	Lawrence	1
Burton St. John,	City	1
Miss Elizabeth Sprague,	City	1
Mrs. L. J. Shedd,	Marietta, O.	3
Rev. W. H. Wilcox,	D. D., Malden, Mass.	52
U. S. Government,	Washington	171
N. Y. Book and Hospital Association,	New York	119

The following periodicals have been furnished to the Reading Room free of charge:

The Atlantic Magazine.	Mt. Hope Mentor.
McClure's Magazine.	Boston Saturday Transcript.
The Review of Reviews.	Climate and Crop Bulletin.
The Century Magazine.	U. S. Consular Reports.
Bibliotheca Saera.	Labor Bulletin.
Harper's Magazine.	Patent Office Gazette.
Christian Register.	Wichita Democrat.
Anthony, Kansas, Republican.	Wichita Commoner.
Advocate of Peace, Boston, Mass.	Kansas Star.
Japanese America.	Monitor Press.
The Sunflower.	Winfield Courier.
Kansas City Daily Journal.	Winfield Tribune.
Pittsburg Daily News.	

# REGISTER OF STUDENTS

## I—The College.

### Graduate Students.

Bailey, Cora D., B. S., 1901, Drawing.....	Wichita
Isely, Frederick B., B. S., 1899, Biology.....	Wichita

### Senior Class.

Burton, Thomas Edwin, s.....	Wichita
Cook, Almeda Elizabeth, c.....	Enid, Okla.
Cox, Jennie L., l.....	Wichita
Doty, Grace, s.....	Sedgwick
Finn, Muriel E., c.....	Sedgwick
Furley, Lynette, c.....	Wichita
Graves, Ruth Eleanor, c.....	Wichita
Jobes, Annie Mabel, s.....	Kansas City, Mo.
Jobes, Mary Ellen, s.....	Kansas City, Mo.
Kinsey, Frank S., l.....	Wichita
Morrison, Harold R., c.....	Sedgwick
Nease, Stephen Gilbert, s.....	Wichita
Sample, Florence Clarke, s.....	Wichita
Shattuck, Elizabeth, l.....	Sedgwick
Stahl, W. Walter, c.....	Sterling
Taft, Vera Edna, c.....	Wichita

### Junior Class.

Brown, Bert B., s.....	South McAlester, I. T.
Burd, J. Laurence, l.....	Wichita
Campbell, Hettie Rowena, l.....	Caldwell
Findly, Guy H., l.....	Ford Creek, Okla.
Hutchinson, Mabel, c.....	Wichita
Knickerbocker, Vera.....	Wichita
Levy, Guy Wallace, s.....	Wichita
Todd, Clarence Edgar, c.....	Wichita

### Junior Special.

Campbell, Ray, l.....	Wichita
-----------------------	---------

NOTE.—Abbreviations: c stands for Classical Course, s for Scientific Course, l for Literary Course, e for English Course, and l s for Latin Scientific.

## Sophomore Class.

Blazer, Fred B., s.....	Aledo, Ill.
Cole, Clifford A., c.....	Wichita
Dryden, Dean, l.....	Wichita
Engel, Jesse Clyde, c.....	Centerview, Mo.
Fees, Clara M., c.....	Wichita
Graves, Georgia Florence, l.....	Wichita
Hall, Irene, l.....	Wichita
Hershey, Harry L., s.....	Kechi
Hill, Emmett H., s.....	Wichita
Hinman, Gabrielle, c.....	Wichita
Imboden, Blanche Seabrook, c.....	Wichita
Lill, Harry A., l.....	Andale
Lockwood, Chester H., s.....	Wichita
Rhodes, Chrissy, s.....	Maize
Rhodes, Mary R., s.....	Maize
Thomas, James U., s.....	Youngstown, Ill.
Voight, O. Catherine, c.....	Wichita

## Freshman Class.

Amos, Thyrsa, c.....	Kingman
Blazer, Minnie L., l.....	Wichita
Burton, Charles S., s.....	Oatville
Chapple, Mae, l.....	Wichita
Congdon, Nannie, s.....	Sedgwick
Cosson, Helen, c.....	Wichita
Croft, Harold, s.....	Eureka
Culp, Blanche, s.....	Wichita
Furley, Charlaine, c.....	Wichita
Hargett, Grace, s.....	Sedgwick
Herrick, Walter G., s.....	Wellington
Isely, Bliss, s.....	Fairview
Jordan, Hunter, s.....	Wichita
Knickerbocker, Leslie S., s.....	Wichita
McKnight, Daniel, c.....	Garnett
Nelson, Claude, s.....	Clearwater
Roulet, Josephine, l.....	Wichita
Russell, Garfield Hugh, s.....	Douglass
Sellers, Majorie, c.....	Bridgeport, Okla.
Skidmore, Mary, s.....	Wichita
St. John, Burton, c.....	Wichita

Trego, Edgar Franklin, c.....	Sedgwick
Williamson, Helen VanNuys, s.....	Greenwood, S. D.
Woodcock, Clorine W., l.....	Wichita

### Freshman Special.

Barnes, George J.....	Wichita
Bostick, Thomas E.....	Wichita
Anderson, Thomas W.....	Hennessey, Okla.
Cook, Albertha N.....	Enid, Okla.
Frantz, Walter P.....	Enid, Okla.
Kaufman, Lulu L.....	Wichita
Washburn, Clara Alice.....	Wichita

### II—The Academy.

#### Fourth Year Academy.

Bosworth, Ernest Henderson, 1 s.....	Wichita
Buck, Ariel, c.....	Wichita
Burkholder, Joseph L., 1 s.....	Harper
Burton, Frederick A., 1 s.....	Oatville
Cochrane, Harriet Blanche, e.....	Acama, N. M.
Davis, Claude K., 1 s.....	Waterloo
Davis, William, e.....	Clearwater
Dean, Jean A., 1 s.....	Wichita
Enns, Jacob H., 1 s.....	Inman
Haass, Charlotte A. C., c.....	Minneha
Hartt, Flora Alice, e.....	Wichita
Kirk, Roy J., 1 s.....	Gurneyville, Ohio
Krack, Raymond, e.....	Andover
Lemmon, A. Verna, e.....	Kechi
Lill, Genevieve, 1 s.....	Andale
Means, Claude, e.....	Iowaville
Munn, Gertrude, 1 s.....	Wichita
Nelson, Elsie May, c.....	Bayneville
Norton, Ella, e.....	Wichita
Norton, Olive, 1 s.....	Wichita
Ross, Earl A., 1 s.....	Clearwater
Sargent, Constance, 1 s.....	Wichita
Sellers, Charlees Cadwallader, 1 s.....	Bridgeport, Okla.
Sexton, Lola F., c.....	Wichita
Solter, Arthur E., e.....	Clearwater
Wallace, Richard, 1 s.....	Wichita

### Third Year Academy.

Abbott, Murrel, e.....	Wichita
Belden, Frederick Marshall, e.....	Valley Center
Breese, Geneva, 1s.....	Wichita
Darling, Howard U., 1s.....	Wichita
Darling, Lyman S., 1s.....	Wichita
Davis, Grace, 1s.....	Waterloo
Gove, Irene, 1s.....	Wichita
Helm, Ada Almyra, 1s.....	Wichita
Hodgson, Arthur Baldwin, 1s.....	Latham
Jamieson, Margaret, e.....	Clearwater
Jones, James G., e.....	Day, Okla.
Kendrick, Marion A., e.....	Wichita
Sayles, Maybelle, e.....	Wichita
Shaeffer, Emlid P., e.....	Waynoka, Okla.
Spaulding, Benjamin Franklin, 1s.....	Waynoka, Okla.
Stettler, Raymond H., 1s.....	Wichita
Tompkins, Gordon Philip, 1s.....	Clearwater

### Second Year Academy.

Babb, Carolyn Isabel, e.....	Wichita
Brookings, Jessie Evalyn, e.....	Wichita
Clancy, Charles, e.....	Coats
Cooke, Charles Leonard, 1s.....	Argonia
Cooper, S. Wilbur, 1s.....	Wichita
Dietrich, E. Claude, e.....	Wichita
Grier, Ethel, e.....	Andover
Helm, Charles, e.....	Wichita
Peters, Ada, e.....	Wichita
Ricker, Flora Caroline, e.....	Wichita
Rutter, Nellie May, 1s.....	Wichita
Smith, Hart Roy, 1s.....	Latham
Smith, Ina, e.....	Wichita
Niederlander, Ermynadene, e.....	Wichita

### First Year Academy.

Appling, Clara Jewel, 1s.....	Wichita
Barker, Oliver P., e.....	Riverdale
Brittingham, Carrie Eleanor, 1s.....	Morefield, Neb.
Case, Margaret, e.....	Wichita
Dickson, Harold Guy, e.....	Wichita

Dyer, William, 1 s.....	Argonia
Gavett, Mary E., 1 s.....	Jackson, Mich.
Garst, Reretta, e.....	Wichita
Grier, Mabel, 1 s.....	Andover
Halbrook, Bessie Annie, 1 s.....	Wichita
Hodgson, Howard Edmund, e.....	Latham
Hodgson, Roy Cyrus, e.....	Latham
Holmes, Winn, 1 s.....	Wichita
Houston, Aleen F.....	Wichita
Moore, Zoella S., e.....	Haven
McGrail, James E., e.....	Minonk, Ill.
Phillips, Montrose, 1 s.....	Wichita
Potts, Howard N., 1 s.....	Wichita
Sargent, Philip Clarence, 1 s.....	Wichita
Sawyer, Mary Blanche, 1 s.....	Washington C. H., Ohio
Smith, Charles L., 1 s.....	Amorita, Okla.
Smyth, Esther, f.....	Wichita
Tillinghast, Florence Louise, 1 s.....	Wichita
Walch, Charles Clemence, e.....	Wichita
Wallace, M. Louise, 1 s.....	Wichita
Williams, Vera, 1 s.....	Wichita
Woodcock, Bessie, e.....	Wichita
Yeilding, Arthur, 1 s.....	Weatherford, Okla.

#### Special Academy.

Aley, Marion .....	Wichita
Brock, Norma .....	Enid, Okla.
Buck, Carlton Nutt.....	Wichita
Buck, Clifford Webster.....	Wichita
Buck, Vera.....	Wichita
Fike, Alva .....	Wichita
Fike, Dorothy .....	Wichita
Isely, Merrill N.....	Wichita
Kleinhein, Karl.....	Wichita
Kleinhein, Sanford.....	Wichita
Tillinghast, Charles.....	Wichita
Tillinghast, Lucian .....	Wichita
Tillinghast, Mildred .....	Wichita
Tillinghast, Ruth .....	Wichita
Van Buskirk, Florence.....	Wichita
Woodcock, James Joseph.....	Wichita
Woods, Jessie .....	New Murdock

## III—School of Music.

Russell Bailey  
 Isabella Barnett  
 Ethel Beard  
 Ralph Buck  
 Agnes Busch  
 Gertrude Bird  
 Alberta Cook  
 Carrie Cook  
 Grace Duffield  
 Mrs. D. A. Garibaldi  
 Mrs. James Garibaldi  
 Charlotte Haass  
 Estelle Hays  
 Nellie Herrig  
 Leroy J. Hyde  
 Ada Jennings  
 Walter Jennings  
 Fannie B. Kech  
 Ola Kinkead  
 Genevieve Lill  
 Harry Lill  
 Grace Lyman  
 Nellie McGinnis  
 Edith Mallo

Gladys Mallo  
 Manora Miller  
 Mrs. W. Morris  
 Olive Norton  
 Helen Pegram  
 Walter Rambeck  
 Josephine Roulet  
 Estelle Round  
 Elsie Shuler  
 Harry Shuler  
 Effie Simmons  
 Florence Smith  
 Ina Smith  
 Ethelyn Strong  
 Emma Taylor  
 Leigh Taylor  
 Theron Taylor  
 Deloise Teffer  
 Frank Van Buskirk  
 Walter Vincent  
 Damon Walke  
 Frederick Walke  
 Helen Williamson

## Members of Woman's Glee Club.

Broese, Geneva  
 Campbell, Hettie  
 Congdon, Annette  
 Cook, Almeda  
 Cook, Alberta  
 Doty, Grace  
 Fees, Clara  
 Furley, Charlaine  
 Furley, Lynette  
 Graves, Eleanor  
 Graves, Georgie  
 Grier, Mabel

Hart, Flora  
 Hinman, Gabrielle  
 Imboden, Blanche  
 Knickerbocker, Vera  
 Levick, Bessie  
 Munn, Gertrude  
 Rhodes, Chrissie  
 Rhodes, Mary  
 Sellers, Marjorie  
 Shattuck, Elizabeth  
 Taft, Vera  
 Williamson, Helen

NOTE.—The Woman's Glee Club, as well as members of the School of Music Faculty, may be secured for concerts throughout Kansas and Oklahoma next season by churches and societies at a sum simply sufficient to cover expenses. For detailed information address the Director.

In addition to the foregoing, the College Choral Society of ninety-seven voices, and the Apollo Club, a men's organization of Wichita, with a membership of thirty, under the direction of Professor Ellenberger, have made an enviable reputation.

#### \*IV.—Department of Art.

##### Advanced Students.

Bailey, Cora	Finn, Muriel
Blazer, Fred	Skidmore, May
Breese, Geneva	Roulet, Josephine
Bugbee, M.	

##### Mechanical Drawing.

Bostick, Thomas	Morrison, Harold
Hill, Emmett	

#### V.—Department of Elocution and Physical Culture.

Burton, Edwin	Imboden, Mrs. H.
Bunnell, Julia	Imboden, Hortense
Cook, Bertha	Imboden, Mildred
Campbell, Hettie	Imboden, Ruth
Crum, H. R.	Jackson, Helen
Dubois, Florence	McKnight, Dan
Enns, Jacob	Munn, Grace
Fees, Clare	Moore, Pearl
Findley, Guy	Mallonee, Florence
Gill, W.	Noble, Mrs. S. S.
Gill, Jay	Parsons, Frances
Gill, Hugh	Roy, Mrs. H. J.
Granger, Mrs.	Ross, Earl
Graves, Georgia	Shearman, Curtis
Grier, Mabel	Sellers, Marjorie
Hall, Lalage	Sewall, Harriet
Hartt, Alice	Solter, Arthur
Hershey, Harry	Skidmore, May
Imboden, Blanche	Smith, Ina
Sargent, Constance	Thomas, John
Todd, Clarence	Whitney, M.
Tompkins, Gordon	Whitney, Mabel

\*NOTE.—All the students in the General, First and Second Year of the Academic Department have received instruction in this department. The list given here contains the names of those who have received special instruction in this work.

## SUMMARY.

College—Graduate Students .....	2	
Seniors .....	16	
Juniors .....	9	
Sophomores .....	17	
Freshmen .....	24	
Specials .....	7	
	<hr/>	75
Academy—Fourth Year Academy.....	26	
Third Year Academy.....	17	
Second Year Academy.....	14	
First Year Academy.....	28	
Special Academy .....	17	
	<hr/>	102
School of Music .....		71
Department of Art.....		46
Department of Elocution and Physical Culture.....		44
		<hr/>
Aggregate .....		338
Numbered twice .....		85
		<hr/>
Total Students .....		253



PUTNAM COTTAGE

## ALUMNI.

## Class of 1899.

W. S. Fleming, M. D.....	Omaha
Eva Hall <i>McGinnis</i> .....	Wichita
F. B. Isely, Instructor, Wichita High School.....	Wichita
G. W. Jackson, with Wichita Eagle.....	Wichita
E. W. Kramer, Stenographer, Gen. Offices, Northwestern Ry..	Chicago
Alle Miller, Assistant Principal, High School.....	Buckley, Oregon
Ella Miller <i>Chase</i> .....	Springfield, Mass.
M. Roulet, with Mo. Pacific R. R.....	Wichita

## Class of 1900.

Bertha B. Baker, Instructor, Provo Academy.....	Provo, Utah
Adeline M. Finn, Assistant Principal Sedgwick High School..	Sedgwick
Anna Evelyn Imboden <i>Cromer</i> .....	El Reno, Okla.
Mary Nickerson <i>Isely</i> .....	Wichita
Anna T. Jones, Instructor, Wichita High School.....	Wichita
Frank T. McClung, Farmer.....	Oklahoma
Mabel C. Millison <i>Arnett</i> .....	Wichita
Clara L. Richards, Asst. Prin. Medicine Lodge H. S.....	Medicine Lodge
Ellen I. Robinson, Teacher .....	Benton
Daisy Zeininger, Principal Ellsworth High School.....	Ellsworth
Lillie Zeininger, Instructor in Winfield High School.....	Winfield

## Class of 1901.

Cora D. Bailey .....	Wichita
Adeline Wright Harding, Instructor, Wichita High School....	Wichita
Jetta Mae Laycock.....	Manitou, Colo.
Helen Bayne Reilly <i>Ferrell</i> .....	Cambridge, Mass.
Mary O'Brien Warren, Instructor, Wichita High School.....	Wichita
Edwin Francis Wilcox, Reporter, Wichita Beacon.....	Wichita

## Class of 1902.

Blanche Houston, Teacher Enid Schools.....	Enid, Okla.
Charles C. Isely, with Louisiana Red Cypress Co.....	Oklahoma City
Luella H. McGinnis <i>Bosworth</i> .....	Wichita
Gail V. Rhodes, Teacher.....	Maize
Alfred Roulet, M. D.....	Chicago, Ill.
Harriet Sewell, Instructor Carthage College.....	Carthage, Mo.
Frank Van Buskirk, Cattleman.....	Douglass

## INDEX

General Information—		Page	
Corps of Instructors.....		5-6	
Plan and Equipment .....		8-12	
Expenses .....		13	
Requisites for Admission.....		14-15	
Daily Schedule of Recitations.....		16	
Required Courses in Academy.....		17	
Required Courses in College.....		18	
Courses of Instruction—			
Biblical Courses.....	33	French .....	32
Biology .....	30	Geology .....	31
Chemistry .....	31	German .....	28
Commercial Courses....	34	Greek .....	27
Constitution .....	21	History .....	21
Drawing .....	29	Latin .....	23
Economics .....	22	Mathematics .....	25
Elocution .....	42	Pedagogy .....	22
Engineering .....	26	Philosophy .....	20
English .....	20	Physics .....	31
English Literature .....	20	Spanish .....	34
School of Music.....			35-41
Scholarships .....			43-44
Woman's Department .....			45-46
Register of Students.....			49-57



A REAR VIEW