



HLC Accreditation 2016-2017

Evidence Document

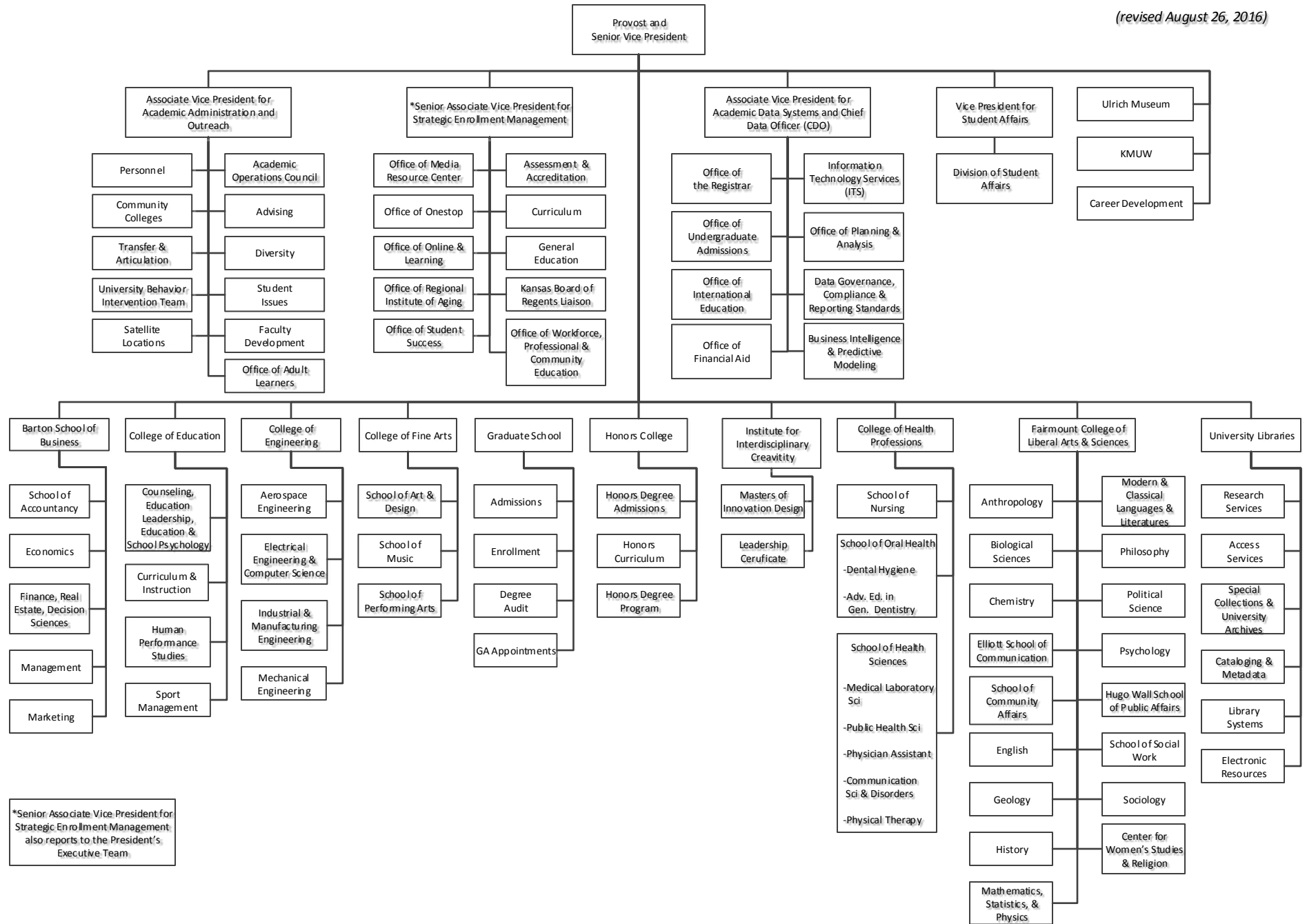
Academic Affairs

Organizational Chart

Additional information: Revised August 26, 2016. See also the Academic Affairs staff listing at: <http://webs.wichita.edu/?u=academicaffairs&p=/staffandevents/staffinfo6/> (accessed August 30, 2016.)

Academic Affairs Organizational Chart

(revised August 26, 2016)



*Senior Associate Vice President for Strategic Enrollment Management also reports to the President's Executive Team.