



HLC Accreditation 2020-2021

## Evidence Document

---

Academic Affairs

Office of Adult Learning

---

### Adult Learning Home Page

---

**Additional information:** See this evidence on the Office of Adult Learning Web site:  
[https://www.wichita.edu/academics/adult\\_learning/](https://www.wichita.edu/academics/adult_learning/) (Accessed June 3, 2021).



## Office of Adult Learning

[IN THIS SECTION](#)[Stop Video](#)

The health and safety of our students, employees, and community remain our top priority. The Office of Adult Learning is operating in a hybrid format to ensure you receive the necessary support. Please contact us with your questions or concerns.

[Contact Us](#) →[Request Information](#) →[Meet the Staff](#) →

## The tools for success

Whether you are finishing a degree, changing your course to another option or beginning a new path, we are here to help every step of the way. With hundreds of classes offered on a variety of days and times we have the tools to help you succeed.

We are proud to be recognized by BestColleges.com as one of the top 50 colleges in the nation for Returning Adult education.

[Adult Learner Enrollment Checklist](#) →



## Join us!

Whether you are just starting out or needing more guidance in your academic journey, we are here for you. Engage in conversation with us as we navigate through common barriers and questions adult or online students face.

[🏠 Learn more >>](#)



## No. 1 Transfer Destination in Kansas

If you're transferring to WSU, we want to give you credit for the work you've done at your previous institution. Our new Transfer Gateway will let you estimate how many of those credits will transfer to your desired degree program at Wichita State.

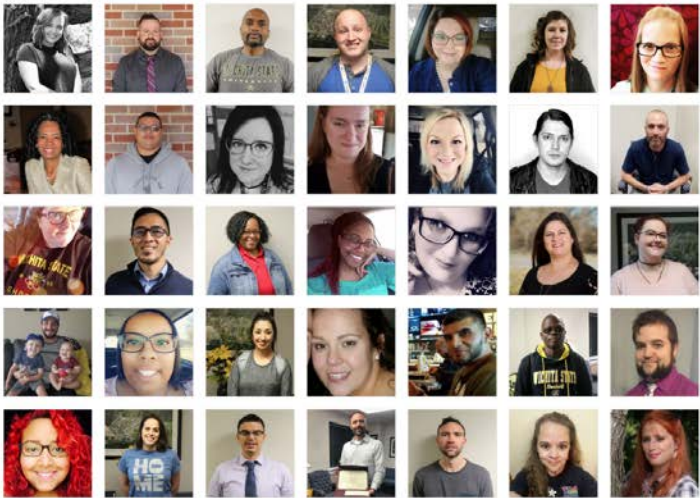
[📄 See how your credits will transfer >>](#)

[▶ Transfer Gateway How-to Video >>](#)

## Shocker Stories

Read our Shocker Stories, a sampling of how some of our returning adult students found their way back to college through Wichita State.

[Read the stories →](#)



## Additional Resources:

[Academic Advising →](#)

[Admissions: Adult Learners →](#)

[Counseling and Prevention Services →](#)

[Degree Programs →](#)

[Graduate School →](#)

[Office of Financial Aid →](#)

[Office of Online Learning →](#)

[Prior Learning →](#)

[Specialized Advising →](#)

[Testing Services →](#)

[Transfer Credits →](#)