



HLC Accreditation 2020-2021

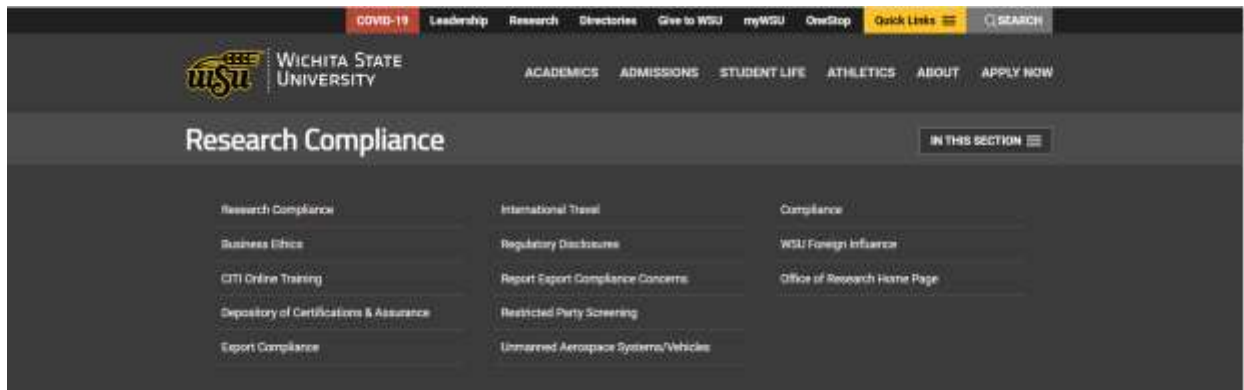
Evidence Document

Office of Research

Office of Research Compliance

Research Compliance Web Pages

Additional information: See more information at the Office of Research Compliance Web pages: <https://www.wichita.edu/research/Compliance/ComplianceIndex.php> (Accessed May 25, 2021.)



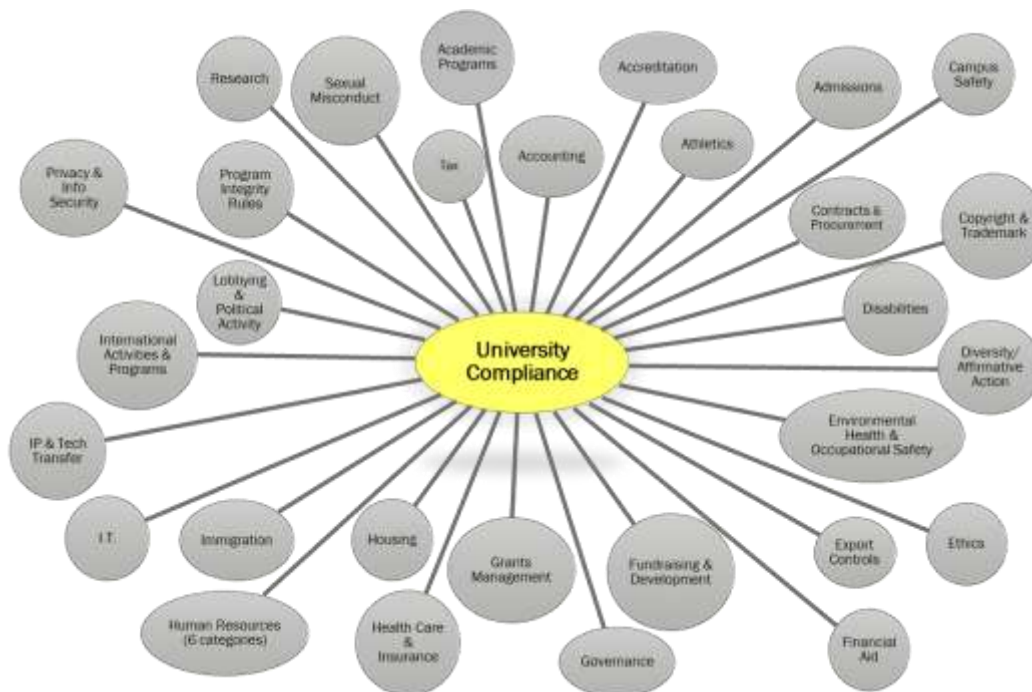
About the Research Compliance Office

Overview:

In addition to the many federal laws and regulations that govern institutions of higher education, there are also state laws and board of regents polices that must be followed. A resource for these regulations can be found by visiting the [Higher Education Compliance Alliance website](#). The HECA Compliance Matrix was translated into the following “wheel & spoke” visual representation to illustrate the many offices on a campus that are responsible for various compliance topics.

Purpose:

The Research Compliance Office serves the WSU community by providing guidance for complying with federal and state regulatory matters that intersect with research. Our office has primary responsibility for the following areas:



- Export Compliance
- Conflicts of Interest and management of those conflicts
- International Shipping
- Screening of individuals and entities against lists of restricted or debarred parties
- International Travel for Research/WSU related purposes
- Collection and Maintenance of WSU departments' annual representations & certifications

The Research Compliance Office also supports the following departments on campus:

- **International Education** - Visa Applications, Study Abroad opportunities
- **General Counsel** – completion of forms and repository for completed representations and certifications
- **Purchasing** – procurement from international vendors
- **WSU Post Office** – resource for review of items being imported into the U.S. or exported out of the U.S.

Culture of Compliance:

Wichita State University is committed to conducting its academic and administrative responsibilities in an ethical manner and in accordance with all applicable laws, regulations and University policy. The University not only expects, but also depends on you to share this responsibility.

Research Compliance Office Staff

Contact us at compliance@wichita.edu or 978-COMP (2667) with questions, concerns or for assistance. We are here to help you navigate the world of research compliance.

Business Ethics

As a state educational institution of Kansas, Wichita State University is committed to providing state of the art educational, research and testing opportunities. This is accomplished by upholding the University's ethics policy, adhering to all Federal, State, and Local laws, and abiding by the policies and procedures as set forth by the Kansas Board of Regents. Click here to learn more about [Wichita State University's Code of Ethics and Business Conduct](#).

Depository of Certifications & Assurances

Wichita State University is required to certify or assure state and federal governments that the University complies with statutes, administrative orders, etc. Examples are the Delinquent Federal Debt, Drug-Free Schools and Communities, and Equal Employment/Opportunity/Affirmative Action (Title VI).

In some instances the University is asked to complete a form, return it to a state or federal agency, and to have on file copies of the completed form and whatever certificate or official notice is returned by the agency. In other instances, the University attests it is in compliance as a condition for a grant or contract.

Research and Technology Transfer has been designated as the central depository for certificates and assurances in order to monitor renewal and to facilitate audits. See WSU Policies & Procedures Manual, [Section 9.16](#) for additional information.

Regulatory Disclosures

- [Whistleblower Rights](#)
- [Combating Trafficking in Persons](#)
- [Restricted Party Screening](#)