

ROTC Names File Date For Queen Candidates

Procedure for selecting candidates for the 1958-59 Air Force ROTC Queen of the Military Ball, to reign jointly with the Army ROTC Queen, has been announced by 1st. Lieut. H. E. Priddle, assistant professor of air science.

The contest is open to all coeds enrolled in at least nine semester hours and who have 2.0 grade averages.

Any Air Force ROTC Cadet may nominate a candidate. In addition, a coed may be nominated by any one of the five sororities, the Women's Dormitory, and the Air Force Angel Flight. Each organization will be allowed three nominations.

Photographs Necessary

An 8-inch by 10-inch photograph bearing the name of the candidate, her grade average, and the number of semester hours, must be submitted to the Air Force ROTC office in the Armory by 4 p.m., March 10.

Photographs will be returned after the selection of the Queen and her four attendants. Selection will be made March 12 in the Commons Auditorium.

Announcement and crowning of the Air Force ROTC and the Army ROTC queens will be the highlight of the formal Military Ball to be held April 27 at the Blue Note Ball Room.

Count Basie to Play

The Military Ball committee, under the direction of Air Force Cadet Colonel Don Pratt, Engineering senior, has adopted a red, white, and blue color scheme for the Ball, and announced that Count Basie and his 16-piece orchestra will provide the dance music.

Attending the ball will be Army and Air Force ROTC Cadets, Air Force Angel Flight and Army Women's Drill Team members, and other invited guests.

Cheerleading Tryouts Are Being Held

Rah! Rah! Sis Boom Bah! Wanta be a cheerleader?

All students interested in cheerleading during the 1959-60 school year are invited to participate in cheerleading training sessions and tryouts this week, according to Elaine Woodman, assistant head cheerleader.

Practice sessions will be held in the Henrion Gymnasium at 7:30 a.m. tonight and Wednesday, she said.

Tryouts will be held in the Ball Room of the Fine Arts Center at 7:30 p.m., Thursday.

Students interested in going out for cheerleading must have a 2.0 grade average and be carrying 12 hours, she said.

Students will be judged on the basis of enthusiasm, coordination, appearance and poise, she added.

Entries Now Taken For Sweethearts

Entries are now being taken from freshmen, sophomore, and junior coeds, who wish to be candidates for Army ROTC Cadet Sweethearts during 1959-60.

Deadline for entering the contest is Thursday, according to Cadet Norris Barker, public information officer.

Coeds must have a 2 point grade average to qualify as candidates and be carrying at least 10 hours. Each candidate must submit a non-glossy photograph to the Army ROTC.

In addition to coed entries, any cadet in the Army ROTC battalion may nominate a personal candidate who meets the qualifications, Barker said.

The five coeds selected as sweethearts will participate in a variety of activities, including parades, trips, and drill at annual Armed Forces Day ceremony at McConnell Air Force Base.

Sweethearts will head the new 30 member women's drill team recently organized by the Army ROTC.

Women wishing to enter the contest should write their name, grade average, and the number of hours they are carrying on the back of their photographs, and submit the pictures to the Army ROTC detachment orderly room in the Armory.

Annual Concert Slated for Hall

The University's Woodwind Ensembles will be presented in their third annual concert of Chamber Music at 8 p.m., tomorrow, in the Fine Arts Center Concert Hall.

Two woodwind quintets and a clarinet quintet, all directed by Vance S. Jennings, instructor of clarinet and saxophone, will appear.

Music by Haydn, Jacoby, Telemann, Lefebvre, Bozza, and Schuller will be presented.

Students who will appear include: Mary Cooper, and Marilyn Adamson, flute; Don Hilts and Randy Duvall, oboe; Dan Alfaro, Marilyn Hoagland, and Jean Terrell, bassoon; Eugene Wade and Marcus Crosby, French horn; Mary Cartmill, Allan Maguire, Don Pelzl, Jeanine Wright, and Phil Bugg, clarinet; and Robert Sallee, bass clarinet.

THE SUNFLOWER

OFFICIAL STUDENT NEWSPAPER

Vol. LXII—No. 36

University of Wichita, Wichita, Kansas

March 3, 1959

SGA Petition Deadline Set for Next Monday

Petitions from candidates in the coming Student Government Assn. elections must be filed in the Campus Events Bureau, Rm. 005, Fiske Hall, before 5 p.m. Monday, according to Election Commissioner Claude Lee.

Lee stated that declarations of candidacy are now available in the Campus Events Bureau to all who want them. Any student may file, with or without the nomination of a party.



WU GRAD HONORED—Dr. Geraldine Hammond, now serving as chairman of the English department, was chosen Prof of the Week by students in the Sunflower's Favorite Prof contest. (Sunflower Staff Photo by Richard Roberts.)

Woodward Will Coach Net Team

Dr. Val Woodward, chairman of the biology department, has been named coach of the Varsity Tennis Team.

The tennis team is scheduled to open its season with a match against Colorado University here March 20.

Team members announced recently by Dr. Woodward are Jim Carter, Bill Potter, Norris Barker, Pete Piper, and Myron Janzen.

Dr. Woodward said Saturday that he had accepted the position of tennis coach as an extra-curricular and recreational activity.

He praised his team members for their abilities and said he enjoyed playing tennis with them and coaching the team very much.

He came to the University last year to head the newly created biology department.

Dr. Hammond This Week's Favorite Prof

Dr. Geraldine Hammond, co-chairman of the English department, is this week's winner in the Favorite Prof contest.

Dr. Hammond received her bachelor's degree from the University in 1931 and her master's degree from the University of Kansas in 1932. She completed work toward her doctorate in English at the University of Colorado in 1944.

Dr. Hammond first joined the University faculty in 1932. She also has taught at the University of Colorado, Oregon State College of Education at Monmouth, and at Eastern Oregon College at La Grande.

She was awarded a Phi Beta Kappa key while attending the University of Colorado. In addition, she is a member of several professional organizations.

The two parties which have registered for the election at this time, BPOC and BARB, have announced deadlines for filing their applications for candidacy.

May Submit Letters

BPOC petitions may be picked up today and tomorrow at the Campus Events Bureau, according to Diane Copeland, BPOC president. These petitions must be returned to the Campus Events Bureau before 5 p.m. tomorrow. Miss Copeland urged all students interested in running for an office to file a BPOC petition.

Persons interested in running on the BARB ticket are invited to submit letters to that effect to the bureau before 5 p.m. Thursday, according to Ivan Schirer, BARB vice-president.

Schirer stated that he hoped for a good display of interest from the independent students on campus, as the foundation of the BARB Party and its hopes of success rest almost entirely upon these students.

40 Offices Open

Candidates in the election, to be held on March 19-20, will be vying for a total of 40 offices. Of this number, 28 will entitle the winning candidate to a voting seat in SGA. The remaining 12 are for class officers such as vice-president, secretary, treasurer and sergeant-at-arms, who will not sit in SGA.

Public campaigning by candidates and parties may begin after 5 p.m. March 13. Miss Copeland stated that she believed the disappearance from the campus scene of AURP and the emergence of the "mysterious" BARBS to challenge the supremacy of BPOC should create a healthy, interesting campaign atmosphere.

Scholarship Deadline Set for March 15

"All scholarship applications for the 1959-60 school year must be turned in at the Student Aid Office, Rm. 100, Fiske Hall by March 15," Miss Jan Reese, secretary to Paul Chrisman, counselor in charge of the student aid program, announced.

Therapeutic Art to Be Displayed

By RICHARD MILLER Sunflower Staff Reporter

An exhibition of art work by children and adults from the Institute of Logopedics will be on display in the Little Gallery of the department of Art, Wednesday through March 20.

The work is done by students ranging in age from 7 to 31 years, and represents a new form of functional occupational therapy developed by the institute in its teaching and rehabilitative program.

Art Used As Therapy Art has been employed as a means of therapy to develop expression, initiative and self-confidence through constructive creative activity.

Special personnel are involved in this instructional program. Virginia Britton was the first such

person hired by the institute for this purpose. She has a bachelor of art degree in art and a master's degree in home economics.

Special Class Taught

She teaches basic elementary art classes, and a special class of home arts to a group of teen-age girls. The basic art programs include projects in crayon, chalk, tempera and clay.

A unique fellowship has also been established to enable trained art students to aid in the institute's program of therapy. Bob Ault, an MFA candidate, is a teaching-fellow in the department of art. However, his instruction takes place in classrooms of the institute. He teaches elementary art problems of drawing and composition.

Attendance Urged

All work on display has been done as part of this new therapeutic

program. The Institute of Logopedics and art department encourage everyone to view this exhibit of their students' progress and achievement.

Coffee will be served from 9:30 a.m. to noon the first day of exhibition.

Press Women Honor Journalism Major

Diane Copeland, Liberal Arts senior, was honored at the annual Wichita Press Women's Beaux Arts Ball held Saturday night.

Miss Copeland holds the Wichita Press Women's Scholarship. She is a former Sunflower editor-in-chief. The scholarship is awarded annually to a coed majoring in a communications field at the University.

300 Contest Ballots Cast

Three-hundred ballots were cast for 12 University professors and instructors in the third week's "Favorite Prof of the Week" contest, sponsored by the Sunflower.

Dr. Geraldine Hammond, professor of English, won the title with over 100 votes cast by students. Runner-up in the contest was Dr. Alvin Sarachek, assistant professor of biology.

"Prof" ballots for this week's contest must be in the Sunflower office by 1 p.m., Friday.

All University professors and instructors are eligible to be nominated for the award with the exception of professors who have won the title in previous contests.

At the end of weekly contests, the winners of each week will be eligible for "Favorite Prof of the Campus."

DATE

PROFESSOR'S NAME

DEPARTMENT

FAVORITE PROF OF THE WEEK

YOUR NAME

COLLEGE

A student may vote only once each week. Mail or bring your vote to the Sunflower office, Rm. 116, Comm. Bldg., by 1 p.m., March 6.

Editorials . . . Exchanging Ideas

Last week a group of students sat over coffee in the Faculty Dining Room and discussed their ideas on what constitutes a liberal education with Dr. Margaret Habein, dean of the College of Liberal Arts and Sciences.

This was the third such meeting to be held on the campus in the past three weeks. It was designed to make available to the students the chance to exploit the facilities of the University and the community, and to achieve understanding on a broader scale of information not normally offered in the classroom.

The two previous meetings were attended by faculty members representing the fields of art and speech. These discussions are open to all students. The group, which as yet has no name, charter, or dues, plans to meet at least once a week. It hopes to probe into as many areas as time permits, and will probably discuss many controversial issues. Plans are to have guests representing a wide variety of fields.

A second group, which deals more specifically in the area of political science, has also been organized and its meetings are conducted in a similar manner.

There have not been enough informal meetings of this type held on the campus in the past. This is unfortunate considering the success of Mortar Board's recent fireside lectures and the general acceptance of "Egghead Week."

The students who participated in these discussions should be commended for their interest and their realization that the learning process does not end with the bell that ends class periods.

We would like to see similar groups spring up throughout the campus, with the sole purpose being a free exchange of ideas in an atmosphere conducive to constructive discussion.

A nuclear war might not decide which nation is right, but it will probably determine which nation it left.

Inquiring Reporter SFB Members Speak Out

By ART LARSEN

Last week's announcement that a member of Alpha Gamma Gamma fraternity had been chosen as president of the Student Forum Board for the fifth consecutive year caused considerable commotion in certain parts of the campus. Student Forum Board members were interviewed for their comments on this event.

THIS WEEK'S QUESTION: The presidency and selection of members of the Student Forum Board has been dominated by one fraternity over the last four years. Do you have comments or opinions concerning this?

Claude Lee, unaffiliate—It's true, a bad situation exists because the Alpha Gamma Gammas, the Delta Gammas, and the Gamma Phi Betas have capitalized on student-body apathy to the Student Forum Board. Many students who aren't in any of these groups don't really care what happens to the organization because it has such a narrow base of control, so perhaps we don't deserve to have broad representation on the board.

On the other hand, I believe the major fault lies with the method of selecting members, which allows two or three Greek organizations to perpetuate themselves indefinitely at the dinner table with eminent campus visitors.

If those who presently control the Student Forum Board were really interested in having a broad base in the organization, they could have it by changing this method of selection and by denying membership to a few good friends who aren't qualified. The organization could then be built up into the kind that would attract top-flight, qualified students from every walk of campus life.

Suzanne Umphrey, Alpha Phi—You can't dispute the figures which prove that one social group does dominate the Student Forum Board. However, there are at least two other organizations of some dimension that have the same type of unbalanced membership. I can't chide this social group because I certainly have a tendency to favor those whom I know, like and believe to be capable.

I hope that interested people will petition for membership on the board this year so that it will become a more representative

group. I can't discard the fact that when one group has more members and officers in an organization, these people are given more responsibilities and work. I don't see that complaining will do as much good as petitioning and showing a willingness to work for the board.

Annette Wiehl, Delta Gamma—The domination of one fraternity on the Student Forum Board is a very natural occurrence. This fraternity actively encourages its members to petition for membership on the board with the result that more petitions are received from this group than from any other. If members of this group become officers of the board, it is because they have proven themselves able and qualified for these positions.

Sharon McNeil, Alpha Chi Omega—It is an unhealthy situation when any organization becomes dominated by one small group. This tends to turn what could be an active cultural force on campus into merely a charming, self-perpetuating prestige group.

The remedy to such a situation can only be brought about by an increased interest and desire on the part of all students whereby a group such as this will be forced to reach beyond its own membership in order to recognize those students possessing the outstanding abilities and qualities which the board purportedly desires.

George Anderton, Alpha Gamma Gamma—The fact that Student Forum Board is dominated by one fraternity is merely the result of an outstanding display of interest and willingness to work on the part of this group. It would be ideal if all groups on campus were represented equally on the board.

The facts show, however, that this has not been possible until

Published each Tuesday and Friday morning during the school year by students in the department of Journalism of the University of Wichita except on holidays, during vacations and examination periods. Second class postage paid at Wichita, Kansas.
Editor: Milt Brantley
Managing Editor: Leslie Williams

now as all groups have not shown either equal interest or an equal membership of qualified people.

The members of the board elected by proportional vote of the members of the past year. This gives all petitioners equal opportunity.

I would like to urge all students who are interested to petition for membership on the board as it is only through an increase of interest on the part of the student body that the board can become truly representative.

The record of achievements of the board over the past six years speaks for itself. These achievements were possible only because of the outstanding qualities of the board members and officers.

the Romantic Style



Fuss Carlyle
AND HIS ORCHESTRA

SATURDAY MARCH 7
Advance Tickets \$2.00 per person
at the Record Shop
221 East William

BLUE NOTE BALLROOM
MU 3-5627 WH 3-8587

DEPENDABLE SERVICE
— ALWAYS —
PICK-UP & DELIVERY
SPECIALIZED LUBRICATION

BILL'S
"66" SERVICE

21st & Grove
—PHONE—
AM 7-6791



ISA Pay-Outs

The ISA Used Book Store will begin making payouts at noon on MARCH 2, according to Bud Hoffmann, store manager. During the payout period, which will extend through MARCH 31, the store will be open from noon until 4 p.m. and 6 p.m. until 9 p.m. Monday through Friday; and from 8 a.m. until noon on Saturday.

Hoffmann urged that all students having books in the store collect either their books or the money for them prior to APRIL 1 as the store will close permanently on that date.

Student Government Elections

Declaration of Candidacy forms are now available in room 005 Fiske Hall and in the CAC office, Commons

The following positions will be up for election on the March 19, 20
STUDENT GOVERNMENT ASSOCIATION ELECTION

Congressmen

- 1 SGA President
- 1 SGA Vice-President
- 1 SGA Secretary
- 1 SGA Treasurer
- 9 Congressmen, elected proportionally, at-large
- 12 College Congressmen (2 each from LA, BA, Eng, Edu, FA, Music)
- 3 Class Presidents (Soph, Jr, Sr)

28 Total Congressmen Elected

Class Officers (See presidents above)

- 3 Class Vice-Presidents (Soph, Jr, Sr)
- 3 Class Secretaries (Soph, Jr, Sr)
- 3 Class Treasures (Soph, Jr, Sr)
- 3 Class Sgt-at-Arms (Soph, Jr, Sr)

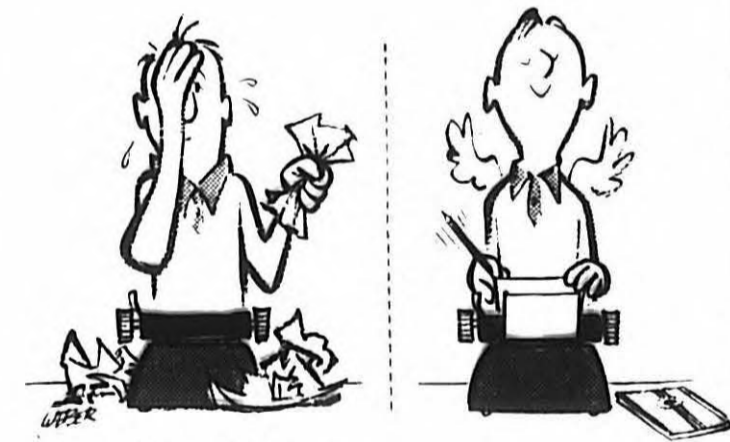
15 Total Class Officers

Any student, if he otherwise qualifies, may file a Declaration of Candidacy with the Election Commissioner with or without the nomination of a political party!

Any additional information regarding qualifications, rules, duties and existing political parties may be obtained from the Election Commissioner.

THE DEADLINE for filing for election is MONDAY, MARCH 9, 5:00 P.M.

CLAUDE LEE
ELECTION COMMISSIONER
ROOM 005 FISKE HALL
MU 3-7561, EXT. 350



To err is human...
to erase, divine with

EATON'S CORRASABLE BOND

Typewriter Paper

Try it! Just the flick of a pencil-eraser and your typing errors are gone! It's like magic! The special surface of Corrasable Bond erases without a trace. Your first typing effort is the finished copy when Corrasable puts things right. This fine quality bond gives a handsome appearance to all your work. Saves time and money, too!



Erasable Corrasable is available in light, medium, heavy weights and onion skin. In convenient 100-sheet packets and 500-sheet ream boxes. A Berkshire Typewriter Paper, backed by the famous Eaton name.

EATON'S CORRASABLE BOND
Made only by Eaton

EATON PAPER CORPORATION FITTSFIELD, MASSACHUSETTS



AMOUR GAMS—Pictured around the tights are typical stockings and heels for evening wear; Sandy Rippey wears bermuda socks for sports wear; Connie Duncan shows the tights, and Becky Fehring wearing bobby-socks for everyday campus wear.

Let the Men Grumble Away-- Way Colored Tights Are Warm!

Shades of Robin Hood—today's coed is sporting tights that would put R. and his Sherwood Forest gang to shame. The tights are worn with skirts or bermudas instead of the Merry Men's tunic.

When the icy winds of winter blow around the campus, long-legged American beauties everywhere cover their gams with these warm s-t-r-e-t-c-h hose. Smart coeds donned these stockings to their gams from turning white while cheering their football team on to victory in wintry weather.

In Many Colors
Styled somewhat after the dancer's leotard tights, the new fashion comes in an array of colors including the dancer's black shade, in Hood green, fire engine red, royal blue, and rust brown. Several styles in plaids, stripes, and polka dots are not getting much of a "toehold" in popularity.

These styles have their pint-sized versions for the younger cool girls.

about how ridiculous the tights are, remind him of the less-stylish men's counterpart—long flannel underwear.

Tights Are Inexpensive
Any budget can include a pair of these tights, because they are relatively inexpensive. The coed with cold feet may want to buy several pairs to mix with and match her wardrobe.

The less active coed can probably wear her stockings for several seasons without getting any "runs" in them, but the more active may not wear them quite as long without any mishaps.

When "the weather outside is frightful," coeds are putting their best foot forward in colored skin-like hose.

Pledge Class Numbers 20

Phi Upsilon Sigma fraternity has announced its second semester pledge class, the largest one on the campus at this time.

Wearing the black and gold pledge ribbons of Phi Upsilon Sigma are Butch Allred, Jim Basham, Jim Beasley, Frank Chappell, Mike Clancy, Don Coulter, Charles Dunn, Don Henry, Ronald Irion, Herb Meyers, Dick Peel, John Seiffkes, Denny Sullivan, Rick Wright, Pete Piper, Phil Snodgrass, Don Gragg, Mike Cochran, Roger Hinderliter, and Biff Pennypacker.

Officers of the pledge class are Charles Dunn, president; Butch Allred, vice-president; Don Coulter, secretary; Dick Peel, treasurer, and Ricky Wright, sergeant-at-arms.

Alpha Phi Takes Wheaties Crown

Coronation of Wheaties Sweetie and Jack Armstrong highlighted half-time ceremonies of the Shockers' final home-court basketball game against Bradley last week.

Crowned were Marcella Kerrick, Alpha Phi, and Ev Wessell, Education senior.

Members of Wheaties elect Jack Armstrong from the senior members of the basketball team.

The basketball squad chose Miss



Kerrick **Wessell**
Kerrick as Wheaties Sweetie. The honor also goes only to a senior.

Miss Kerrick is a Liberal Arts senior.

Last year, Reta Nestor, Alpha Chi Omega, and Don Lock, held the honors.

QUICK SERVICE

Welch CLEANERS

1337 No. Hillside

Finest Coin-Operated Laundry in Town

Shirts and Pants Finished

SKIPPY'S

1336 E. 13th MU 3-9919

Bachelor Bundles Our Specialty

Wichita Eagle

Artists • engravers

14 South Market - Wichita 1, Kansas

AMherst 2-4431

BIRD CAGE

By PAULA BIRD
Sunflower Society Editor

According to the students at Colorado University, there seems to be a new monetary system. One dollar is a "scoot"; 55, "skeemer"; \$6, "skinny"; \$100, "skootch." Nickles, quarters, and dimes are "knitches, twitches, and deemers." Under his system 500 "deemers" make one "skeemer." I can already hear our students ranting about tuition. "It cost me a 'skootch' and four 'skeemers' to get in, plus a 'skinny' and a 'scoot' for Student Union fee."

Julie Stone, a member of Sigma Alpha Iota, honorary music fraternity, has announced her pinning to Jim Quinn, Phi Upsilon Sigma.

With respect to Hippodrome, Greek Sing, elections, initiations, six-week exams, and seven meetings a week, a Greek member was overheard saying, "Even though it's spring, I'm still 'snowed under'."

A new pledge at the Alpha Phi house is Joan Sipes Coeds who are interested in pledging a sorority have until March 10 to register in Dean Josephine Fugate's office, room 113, Jardine Hall. Registering in no way obligates a coed to join any organization.

Here's one from the Colorado University Daily: A space ship from Earth FINALLY landed on Mars, and the Earthmen were

greeted by a furry little creature. "Take us to your leader," they told him. After passing over rough terrain and encountering many similar furry creatures, they came face to face with a creature with a hypodermic needle in his head. "This is our leader," the first creature said. "Why the needle?" asked an Earthman. "I'm the furry with the syringe on top."

Heard about the married students who wanted to host a dance but couldn't find chaperons?

Thought for the week: If you haven't heard a rumor by noon, start one.

JOHNNIE'S CIGAR STORE

Humidor Fresh Cigars—Imported and Domestic Pipes

AM 2-9216 233 N. Market

Phillips 66

Best Drive Mile-Fuel Today!

BUCK FREEMAN SERVICE

It's Performance That Counts!

MU 4-1511

3825 EAST 17TH

Initiations Held or Scheduled By University's 5 Sororities

Out of 124 young women who pledged a social sorority last semester, 87 have been or soon will be formally initiated. Alpha Phi, Alpha Chi Omega, and Gamma Phi Beta pledges who qualified for membership are now active members.

Qualified pledges of Delta Delta Delta and Delta Gamma will become official active members Sunday.

On February 22 at 7:00 a.m. the pledges of Alpha Phi were initiated at the University Methodist Church. The new actives are Judith Atherton, Phillis Jo Baum, Julie Cope, Margaret Francis, Sandra Havens, Marilee Long, Mary Ann Ludeman, Martha Miller (honor initiate), Alice Peterson, Myrna Stith, Phyllis Thurman, Sandra Welch, Susan White, Milly Wolcott, Bonnie Bickel, Conne Duncan, Lena Hartshorn, Madolyn Townsend, Jane Maxwell, Anita Roberts and Bonnafay Roberts.

A dinner honoring the new Alpha Chi Omega initiates was given at The Farm on February 22. The formal initiation took place the day before at the sorority house.

Sporting new active pins are Shirley Anderson, Judy Cline, Judy Curtis, Sandy Ensign, Sharon Fear, Anne Hubbard, Portia Kringle, Hope Kroenlein, Pat Matzek, Norma Simons, Ginnie Smith, Linda Winston and Nina Rutledge.

Midnight Initiation Set
Delta Delta Delta pledges will be initiated March 6 and 7 at midnight at the sorority house. The sorority advisory board members will be special guests at a breakfast beginning at 5:00 a.m. at the Allis Hotel, Saturday afternoon the sorority plans to initiate about 30 Sorosis alums.

Linda Christian, Cathie Evans, Jan Foltz, Virginia Glover, Jo Lynn Gray, Lynn Haupt, Mary Hawks, Carol Kerbs, Floy Mayer, Marilyn Murphy, Mary Salyer, Jean Thomas, Barbara Williams, Gerri Young and Diane Forsythe will be the new actives at the Tri

Delta house.

Weeks Activities Planned
"Inspiration Week," which began yesterday, marks the beginning of initiation for the pledges of Delta Gamma. Last night a party was given for the actives and pledges by the pledge trainer and pledge advisor. Tuesday, Wednesday and Thursday, luncheons will be served at the sorority house for all members.

Wednesday night a program will be presented by the alums for both actives and pledges. Friday night a Fun Night has been planned by the actives for the pledges. Inspiration night will be held Saturday. The week will be climaxed by the formal initiation Sunday afternoon from 12 noon to 5 p.m. at the sorority house. A banquet at the Lassen Hotel will follow initiation.

Donning active pins will be Barbara Bennett, Peggy Edminster, Becky Fehring, Judy Goss, Joan Greer, Jackie Gutschenritter, Connie Koehn, Margaret Martin, Mary Phipps, Linda Plott, Linda Radford, Shirley Reed, Marcene Sears, Jean Wittman Carol Woodard, and Judy Hare.

Gamma Phi Initiates 22
Gamma Phi Beta initiated new members at the sorority house Feb. 22. A banquet following the initiation honored the new actives.

Twenty-two recent Gamma Phi initiates are Margaret Caldwell, Carol Chapel, Joyce Cole, Sharon Fries, Judy Frick, Sharron Groenfeld, Marilyn Gunther, Carolee Hamker, Joan Henderson, Ravac Hughes, Karen Justus, Jeanne Kolde, Carol Messenger, Nancy Nesbitt, Henrietta Nye, Marjorie Presnal, Linda Slaughter, Rose Strothman, Leah Thomas, Nancy Thompson, Eva Vachel, and Joyce Walters.



Prom trotter

She's the queen of the campus, and of course she favors you know what... the cold crisp taste of Coca-Cola. She knows that anytime, everywhere, Coke is the real refreshment. We don't say that the secret of her success is Coca-Cola... but it helps!



BE REALLY REFRESHED... HAVE A COKE!

Bottled under authority of The Coca-Cola Company by
WICHITA COCA-COLA BOTTLING CO.

Dr. Rydjord Takes Leave of Absence; Will Complete Book on Kansas

By RICHARD MILLER
Sunflower Staff Reporter

"Kansas' history is recorded in its names." To verify this statement, Dr. John Rydjord, professor of history and dean emeritus of the Graduate School, is conducting an intense research study into the origin of Kansas placenames.

He hopes to have this material published in book form prior to the Kansas centennial celebration in 1961.

Dr. Rydjord became interested in the subject of Kansas names after teaching a seminar in Kansas history during the late 1920's and early 1930's, at the University. He has been collecting information concerning this topic since that time.

Civil War Factor

Although names of persons appear to be most popular in the naming of many counties, cities, and towns, the Civil War was the most determining factor in the choice of these titles. Many towns had names of Southern origin and influence through the 1860's, but following the war, the victors of the North changed them to honor prominent Union soldiers and statesmen.

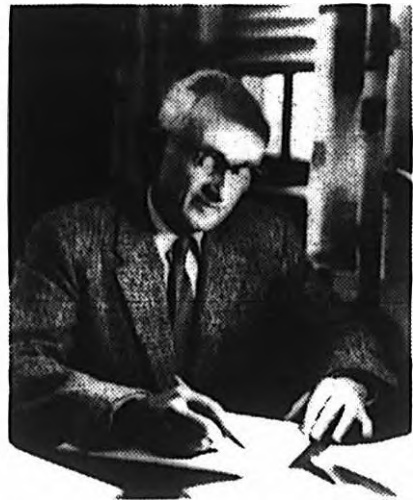
Sedgwick County is named for one of these men, General John Sedgwick, who died at the close of the Civil War. More than 40 other officers are represented in a like manner throughout the state. One enlisted man, a private, is commemorated in Kansas history. Rooks County is named after him.

Lincoln's Name Popular

President Lincoln's name appears most frequently in the state. One town, a county, and several townships, bear his name.

Clara Barton, famous Civil War nurse, is the only woman so honored in Kansas. She was the personage for whom Barton County is

In order of importance—European influence, Indians, and political and social incidents determine the bulk of the remainder of Kansas placenames. Kansas



Dr. Rydjord

itself is an Indian term, and has over 100 variations in its spelling. Wichita, too, is an Indian term with varied meanings and spell-

ings. Altogether, Kansas' Indian names represent 11 different tribes.

Some Sources Strange

Dr. Rydjord has discovered that some Kansas towns have derived their names from very strange sources. Dexter is named after a Kentucky race horse. The winner of an ancient poker game, a Mr. Cocker, also won the right to name a town for himself. And, a transient bum is credited with the naming of Garden City.

Many others are named after the eastern towns from which settlers migrated, and European countries they once inhabited.

Maps, newspapers, county records, and travel accounts written by early settlers have provided valuable information in this study. However, Dr. Rydjord says his most important source of material is Kansas Historical Society. He is planning to return next semester to the Society's headquarters in Topeka. The short leave of absence will allow him to complete his survey.

Psych Prof Leaves For Poland Trip

Dr. Henry Pronko, chairman of the psychology department, left Wichita last week on the first leg of a trip to Poland.

Dr. Pronko, accompanied by his wife, will serve as visiting professor for the next six months under the terms of a grant from the Polish Exchange Program of the Ford Foundation.

Dr. Pronko will conduct a ten-week lecture series on "Current Developments in American Psychology" in Cracow. The Ford grant also provides for lectures to be delivered in other Polish universities including those at Lublin, Poznan, and Warsaw.

Meeting This Week

Today
UNIVERSITY PLAYERS 7:30 p.m. Theatre. Plans will be discussed for proposed one-act plays, banquet, and production of "Contrast" will be discussed. **FLYING CLUB** 7:30 p.m. Rm. 230, Jardine Building. Math Physics Building.

Thursday, March 5
KAPPA DELTA PI Gamma chapter, 7 p.m., Faculty Room, Commons. Pledging of members will be followed by discussion panel. Members R. S. V. P. in the Alumni Rm. 230, Jardine Hall, by 7 p.m. if they plan to attend.

CHARM SCHOOL TEACHERS

Patricia Stevens Finishing enrollment tripled, is adding staff and has outstanding unity for high caliber work. qualify as full or part time instructors. Academic or work ground required in one or more of the following fields:

- Voice and Drama
- Fashion and Wardrobe
- Ballet - Fencing
- Ballroom Dancing
- Makeup
- Modeling

Will accept qualified applicants of ability. outstanding records will be sent to Chicago for further training. top salary.

Patricia Stevens
Finishing School
110-120 E. Williams

Call Mr. Lawton at AM 160 appointment 10 a.m. to 5 p.m.

Typewriters, All Makes
Rented, Sold and Repaired

SEE
The OLYMPIA Portable
at the
BUSINESS EQUIPMENT CO.
Ph MU 2-7439 132 N. Market

THINKKLISH

English: DRIVE-IN MOVIE ON A RAINY NIGHT



Thinkklish translation: This drive-in's main feature: pictures matched to the weather. In January, it's *Snow White*; in July, *Hot Spell*. When it pours, of course, the program is all wet: *Singing in the Rain*, *Hatful of Rain* and *Rain-tree County*. On such nights, the only (Thinkklish) word for this place is *damphitheater*! Better turn on your windshield wipers, light up a Lucky, and enjoy the honest taste of fine tobacco. Then *It's Always Fair Weather!*

MAKE \$25

Start talking our language—we've got hundreds of checks just itching to go! We're paying \$25 each for the Thinkklish words judged best! Thinkklish is easy: it's new words from two words—like those on this page. Send yours to Lucky Strike, Box 67A, Mt. Vernon, N. Y. Enclose your name, address, college and class.



Get the genuine article

Get the honest taste of a LUCKY STRIKE

English: SEASICK MAYFLOWER PASSENGER



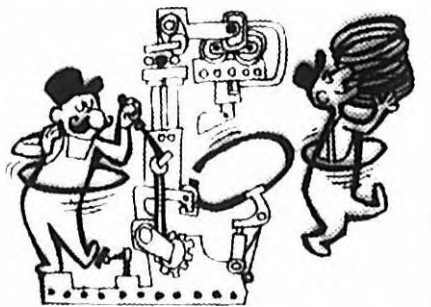
Thinkklish: ILLGRIM
B. TOOMEY, LOYOLA COLLEGE

English: LOUD-MOUTHED APE



Thinkklish: BLABOON
JIM LEWIS, U. OF N. CAROLINA

English: HOOP FACTORY



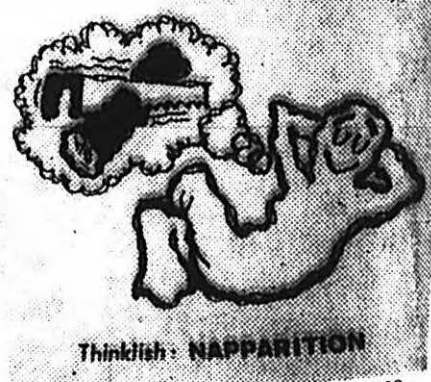
Thinkklish: SPINSTITUTION
CHARLES HUSTED, U. OF COLORADO

English: SODA-FOUNTAIN BOSS



Thinkklish: SCOOPERVISOR
BOB HURLEY, NORTHEASTERN

English: DOZING WRAITH



Thinkklish: NAPPARITION
E. BRUCE MERCHANT, U. OF CHICAGO

CLASSIFIED and BUSINESS DIRECTORY

Say, ALPHA PHIS
How about this? FREE COFFEE for you only at COLLEGE GRILL.
3105 E. 13th St.

HOUSE FOR SALE
By faculty member, short drive east of campus. \$100 down, 2 bdrm brick, carpeted, air conditioning, bookshelves. CALL MU 2-7975 after 7 p.m. Will sell furnished if desired.

Just a Hop from the Classroom Chair to the Barber Chair at YOUNG'S BARBER SHOP
3918 East 13th

YOUR INSURANCE MAN OUGHT TO BE SCHOTT--(Henry)
INSURANCE OF EVERY KIND
Caldwell-Murdock Bld. HO 4-3523

HOUSE FOR SALE
THREE BEDROOM BRICK HOUSE for sale by owner. 4 blocks north of campus. Large rooms, 75 ft. landscaped lot. 2624 Wellesley, MU 4-1132.

ELMER'S BARBER SHOP
SATISFACTION GUARANTEED OR YOUR HAIR BACK
13th AT HILLSIDE

TYPEWRITERS
All Nationally Adv. Brands
Sales - Service - Rentals
WESTERN TYPE CO.
2324 E. Douglas
Across from East High

Product of The American Tobacco Company — "Tobacco is our middle name"