

# THE SUNFLOWER

Volume LXII—Number 22

OFFICIAL STUDENT NEWSPAPER

UNIVERSITY OF WICHITA, WICHITA, KANSAS

December 9, 1958

## Cadets Add Lights To 'Tree of Life'

The "Tree of Life," sponsored by the American Red Cross, has 32 sockets to light up as a result of contributions from the AFROTC squadron that donated blood Thursday. The "Tree" is being used as a board registering each pint of blood donated during the Red Cross Christmas blood drive. There are actually two trees (constructed of plywood in the shape of a Christmas tree), each having 750 sockets to light up. The goal of the Red Cross is 1,500 pints. Of the 33 AFROTC members who went to the Red Cross Center to donate blood, only one was rejected. Rejects are due to colds, hay fever, and for several other reasons, according to Dr. George Comstock, coordinator of men's activities.

"All of us were very happy at the good showing of the squadron," he said. "It will be difficult for the next groups to follow up such showing."

The purpose of the drive is to make sure there will be enough blood on hand to supply the demand during the Christmas holidays, according to the Red Cross. However, the drive is being extended into an all-University drive. The drive will run throughout the year and "will be entirely voluntary," according to Dr. Comstock.

The "Tree" will be on the campus today from 9:30 a.m. until noon in order to solicit donors. Ivan Crowl, Liberal Arts junior and Don Crowl, Business junior.

## Scholars' Week Plans Underway

"Operation Egghead," a scholarship week sponsored by Mortarboard, is being planned for Feb. 6 through 8, according to Marcene Blomon, Education senior and coordinator of the activity.

The idea of the activity is to let students stimulated in academics. The "Operation" is being planned with all students in mind. Breakfast is being planned to recognize students with top academic records.

A recommended book list, comprised of 100 books in all fields, is being prepared for issuance during the scholarship week.

## Final Exams Scheduled for Jan. 14

Final examinations are scheduled to begin Jan. 14, according to Dr. Worth A. Fletcher, registrar.

Students who find their finals schedule calls for three tests in one day may make arrangements to take one with another section

of the course, Dr. Fletcher stated. This must be arranged with the instructor in advance, and approved in writing by the instructor and dean, he added.

In five-hour courses, which have three-hour exams, two hours of the test may be given on the Monday-Wednesday-Friday schedule, and the remaining hour on the Tuesday-Thursday schedule.

No final, or portion of it, may be given at any time other than that scheduled, unless the change is approved by the Council of Deans, Dr. Fletcher said.

HOUR	Wed. Jan. 14	Thurs. Jan. 15	Fri. Jan. 16	Sat. Jan. 17	Mon. Jan. 19	Tues. Jan. 20
8-10	8 M W F	8 T T	9 M W F	8 or 9 Sat.	7 M W F	9 T T
10-12	10 M W F	11 T T	12 M W F		11 M W F	10 T T
1-3	4 M W F	12 T T	2 M W F		1 M W F	1 T T
3-5	5 M W F	2 T T	3 M W F		3 T T	4 T T
6:00-8:30 p.m.	classes starting 6 to 7:10 2, 3, 4, or 5 hr M W 1 or 2 hr Wed.	classes starting 6 to 7:10 2, 3, 4, or 5 hr T T 1 or 2 hr Thurs.	classes starting 6 to 7:10 2 hr M F 2 hr W F 1 or 2 hr Fri.		classes starting 6 to 7:10 1 or 2 hr Mon.	classes starting 6 to 7:10 1 or 2 hr Tues.
8:30-10:30 p.m.	classes starting 8 p.m. or later 1 or 2 hr Wed.	classes starting 8 p.m. or later 1 or 2 hr Thurs.	classes starting 8 p.m. or later 2 hr M F 2 hr W F Fri.		classes starting 8 p.m. or later 2, 3, 4, or 5 hr M W 1 or 2 hr Mon.	classes starting 8 p.m. or later 2, 3, 4, or 5 hr T T 1 or 2 hr Tues.

## Rathbone to Appear With Music Groups



A musical drama featuring a noted actor will appear here next spring which will have University students—not necessarily music majors participating in the production.

The presentation will be Arthur Honegger's "King David," to be narrated by Basil Rathbone, and which will feature three guest soloists. A chorus numbering in excess of 600 will present the massive drama, to be performed for the first time at the University.

### Forces Combined

Combining forces to present the show will be the University Choral Union, which is launching a revised program so that more students may participate, the choirs I and II, the 90-piece University symphony orchestra, and the Wichita Choral Society.

Director of the presentation will be Dr. David Foltz, professor and head of the vocal and choral music department, who is personally acquainted with Rathbone. It is through his efforts the veteran actor will appear.

Dr. Foltz directed the same production, in which he persuaded Rathbone to appear, six years ago at the University of Nebraska. He said that was the first time the actor ever "worked with college students," and that Rathbone was impressed with their capabilities.

### Asked Actor to Appear

Dr. Foltz, currently in his first year at the University, has asked the stage and screen actor to recreate the role here next spring. The presentation will be centered around Rathbone's dramatic narration.

"King David," in three parts, is the story of the Biblical character. (Continued on Page 2)

PAIR CONFER—Dr. David Foltz, professor and head of vocal music, confers with Basil Rathbone, star of stage and screen, who will be here in May for a presentation of "King David." The choral work will be presented by University music groups.

## LA Dean Recommends Revision of Curriculum

The twin goals of the Liberal Arts college have been outlined by Dr. Margaret Habein, dean of the College of Liberal Arts and Sciences, as "providing depth and breadth" to the students.

She reported this to the Board of Regents in connection with the recommendations being made for changes in the Liberal Arts core curriculum.

The curriculum has been studied

and discussed for more than a year and the near complete recommendations are scheduled to go to the faculty soon. Dr. Habein did not reveal the content of the recommendations but said that, if they are approved by the faculty, they will be sent to the Board of Regents for final approval.

### Need General Education

At the monthly Board meeting, she further outlined the purposes and goals of the Liberal Arts college. "Liberal Arts must do many things, it must have a bona fide high standard curriculum for those majoring in a Liberal Arts area."

She also pointed out the need for providing general education for students in other colleges.

Explaining her concept on "depth and breadth," she added, "Our goal is to give depth in the fields which our Liberal Arts majors have chosen, and then to give them breadth in as many areas as possible."

### Hopes to Open Door

Speaking of students and the Liberal Arts program, Dr. Habein said, "We seek to help them speak and write effectively. We are concerned with their acquiring the knowledge to make good decisions. We hope that they will base their later decisions and judgments on fact and knowledge."

"We know that the job can't be done in four years. We hope to make them curious and open the door to knowledge. We hope to make them aware that learning is a life-time process," she added.

## WU Choir To Carol Over CBS

The University Choir will participate in the annual CBS international Christmas broadcast from 3:35 to 4 p.m., Dec. 21.

The choir was selected to be the midwestern university representative to the annual program. The invitation was extended personally by James Fassett, CBS music director.

The choir will be presented along with 10 other groups in a 25-minute program of recorded music. KFJH, the Wichita CBS affiliate radio station will record a high fidelity tape of the choir presentation. The tape, which will be recorded in the Fine Arts Center Concert Hall, will be later released to the CBS network in New York.

The group, under the direction of Dr. David Foltz, professor and head of choral and vocal music, will also feature the Brass Choir, directed by James Hoffren. Elaine Unterseher, pianist; and William Bush, celeste, will accompany the group.

Students will be able to hear the presentation, which includes 16 numbers, at a Christmas concert to be presented at 8 p.m., Dec. 16, in the FAC Concert Hall. There will be no admission to the program.

# Editorials . . .

## WU Ignored

The Wichita Traffic Commission recently approved the addition of 26 street intersections to receive traffic signals. This action is subject to the approval and final action of the City Commission.

The intersection of 17th and Fairmount Streets was notably absent from the list of intersections named. Apparently the members of the traffic commission do not feel that the plight of the University student merits the consideration of controlled traffic at this intersection.

We find it hard to believe that this intersection has ever had a traffic and pedestrian flow check made on it. It is doubtful if such a check has ever been considered.

The problem existing at this intersection is not a new one. It has been a sore spot to the students for several years. There have been efforts made in the past to have this intersection set with four-way stop signs or some other traffic control but, these have gone unheeded.

One would think that a problem as old as this would be noticed by an authority capable of doing something about it. It apparently has been completely ignored by the Student Government Association, the administration, and the Board of Regents.

We think it is the responsibility of one or all of these groups to make the initial move to correct the safety hazard created by this intersection.

The SGA is the representative body of the students. It could draw up the initial student complaint and present it to the Board of Regents. We think the Board of Regents should then present the case to the city. Considering the fact that Mayor James E. Gardner is a member of the Board, it is conceivable that favorable action will then be taken by the city.

This is a way out. Will it happen?

### RATHBONE

(Continued from Page 1)

acter, David, from boyhood through manhood and death.

"King David" was first written to be acted, but was changed by its composer into a concert using a dramatic actor as narrator. Its first performance in this country was by the Philadelphia, Pa., orchestra and chorus, with Rath-

bone narrating.

### 3 New Sections Opened

In preparation for the campus production, still months away, Dr. Foltz has announced that three new sections of Choral Union will be opened next semester, primarily to afford any campus student the opportunity of participating in the presentation.

He said that the new sections will be at 9 and 10 a.m., Tuesdays and Thursdays, and at 7:30 p.m., Mondays, in Rm. 107 of the Fine Arts Center. The evening section is geared for night students, but will be open to anyone.

"There will be no try-outs, and you don't have to be a good singer," Dr. Foltz emphasized.

### Encouraging More Students

In opening the three new sections, he said that the School of Music is trying to encourage more students to receive this type of experience while they are in school, and that "King David" represents that chance.

It is slated for presentation May 10 in the Fieldhouse.



**SIGNS GALORE**—David McMinimy sits at the sign printing machine where he prepares CAC signs for campus organizations. He spends about 15 hours weekly printing the various signs. (Sunflower Staff Photo by Paul Cummins)

## Signs . . . Signs . . . Signs Student Prints CAC Signs

Red signs, black signs, yellow signs, and even green signs flank the campus. Many of these come from the sign department of the Campus Activity Center and the printing work of one student.

David McMinimy, Engineering freshman, spends 14 or 15 hours weekly setting type and running off signs for campus organizations. He works from prepared information submitted from the organizations.

When asked if he ever ran into serious problems in making the signs he commented, "Only with my own spelling." He picked up several signs which he had previously "run off" with a spelling mistake in one of the key words.

He laughed and said that he had made a number of the signs before he caught the mistake, then he had to re-do the order.

McMinimy is from Conway Springs and is an "old hand" at printing. He worked in the printing

shop of the Conway Springs Star, the weekly paper there.

He said that one problem he used to have was that of people getting their sign orders in late. This was remedied by a new rule which requires orders to be in one week before the organizations want them completed.

McMinimy makes use of a large printing machine, in which one sign can be run off at a time, then the type has to be inked again to run off another sign. He says it takes him about a half-hour to set the type before he starts to print the signs.

Just a Hop from the Classroom Chair to the Barber Chair . . . at **YOUNG'S BARBER SHOP** 3918 East 13th



## The Sunflower

Vol. LXII Dec. 9, 1958 No. 22

Published each Tuesday and Friday morning during the school year by students in the department of Journalism of the University of Wichita except on holidays, during vacations and examination periods. Entered as second class matter, September 24, 1916, at the Post Office at Wichita, Kansas, under the Act of March 2, 1879.

Editor: Diane Copeland  
Managing Editor: Milt Brantley  
News Editor: Carol Clay  
Society Editor: Peggy Kennedy  
Desk Editor: Leroy Pitts



"I see your husband's after her Camels again!"

More red-blooded skiers chase after Camels than any other cigarette today. The Camel blend of costly tobaccos has never been equalled for rich flavor and easygoing mildness. The best tobacco makes the best smoke.

Leave fads and fancy stuff to beginners . . .

**Have a real cigarette—  
have a CAMEL**



R. J. Reynolds Tobacco Co., Winston-Salem, N. C.

Patronize Your Advertisers

### The Versatile Olympia

Yes indeed, for every purpose for there is no kind of writing from private correspondence at home to neat assignments in school which cannot very simply and quickly be typed with the OLYMPIA. Priced from only \$79.50 and up. See it today.

**Business Equipment Co.**  
132 N. MARKET AM 2-74

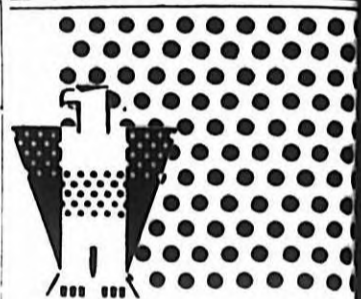
Plan a party or get the gang together for a bang up time!

It's Fun To Skate!

## SKATELAND Roller Rink

1900 E. McArthur  
JA 4-7261

OPEN WED. thru  
SUNDAY 7:30-10:30 p.m.



**wichita Eagle**  
artists • engravers

314 south market - wichita 1, ka  
AMherst 2-4431



## Cheerless leader

Not a "rah rah" left in him! He's just discovered there's no more Coke. And a cheer leader without Coke is as sad as a soap opera. To put the sparkle back in his eye—somebody!—bring him a sparkling cold Coca-Cola!



SIGN OF GOOD TASTE

Bottled under authority of The Coca-Cola Company by  
**WICHITA COCA-COLA BOTTLING CO.**

## Strictly Social

# Campus Group Has Only ISA House

The Independent Students' Association on campus has the distinction of being the only ISA organization in the country to have its own house, according to Bud Hoffman, president of the group.

The organization has 53 members and operates on a basis similar to that of the sororities and fraternities. The local chapter of ISA is one of the few in the United States to operate on a strictly social basis.

### Open to Non-Greeks

Hoffman also stated that the ISA has chapters on all the major campuses in the country. It is open to all students who do not wish to go through the Greek requirements to participate in an organization.

Some of the annual social functions of the group include the Baro-Wire Tangle dance and party. This party is held at Halloween time and the coeds treat the men in the group.

The semi-formal Christmas dance is held during the holiday season. The next big annual event is the Sweetheart dance. This dance is held in February on the weekend closest to Valentine's Day.

### Sweetheart Selected

It is a semi-formal dance and the ISA Sweetheart is crowned at this time. She is chosen by men voters in the organization. Qualifications for Sweetheart are graciousness, beauty, and poise.

Following her selection as the local Sweetheart, she is sent to the national contest with all expenses paid. Last year's national ISA Sweetheart was chosen at Oklahoma State University.

In addition to these annual



**WINTER SUNLIGHT**—Rays of light brighten the modern Independent Students' Association house. The structure on which the group has retired the mortgage, is the most recently built house on campus. (Sunflower Staff Photo by Lloyd Tomberlin.)

events the ISA has parties and informal gatherings throughout the year.

### Meets With Other Groups

The ISA holds regional meetings in the fall of every school year. This year's meeting was held at Omaha, Neb. National meetings are held in the spring of the school year. These meetings are held with the purpose of improving the chapters in the financial and social scope, Hoffman said.

The national meeting highlights at the end of its session the crowning of the national ISA Sweetheart and a formal dance.

### Has Dual Officers

The officers for this year include Hoffman, Don Hickey, vice president; Karen Hatfield, secretary; Bob Lewis, treasurer; and Cecil Schneider, sergeant-at-arms. These officers take care of the external

business of the organization.

Other officers who deal with the members separately on the class basis are Tom Musick, senior class. He is also publicity chairman.

The junior class is headed by Barbara Covert who oversees the Homecoming and Hippodrome activities. She aids the chairman of the activities in whatever ways possible.

Bob Martin is the sophomore class head and Janet Armstrong is in charge of freshmen.

**YOUR INSURANCE MAN OUGHT TO BE**  
**SCHOTT--(Henry)**  
 INSURANCE OF EVERY KIND  
 Caldwell-Murdock Bld. HO 4-3523

# Dorm Men to Play Santa

Thursday night will mark the third annual Children's Christmas party given by students of the Men's Dorm.

The party will be held from 7 to 9 p.m. in the dorm and 23 children, ages 5 to 14 are expected. The presents for the children are being furnished by the men and they will serve the children refreshments and have entertainment for them.

The entertainment will feature the Steffenettes, sponsored by Steffen Dairy Foods Co., with their puppet show, according to Bob Howe, Engineering senior. The children are from the Wichita Children's Home.

Howe is in charge of the party and is being assisted by Bruce Dillion, Engineering senior and Lee Beaty, Liberal Arts senior.

DEPENDABLE SERVICE  
 — ALWAYS —  
 PICK-UP & DELIVERY  
 SPECIALIZED LUBRICATION  
**BILL'S**  
 "66" SERVICE  
 21st & Grove  
 —PHONE—  
 AM 7-6791

FREE FREE  
 Any Two Garments  
 Cleaned for the Price  
 of One with This Ad  
 Good This Week Only  
**Ryan's Cleaners**  
 2107 E. 21st AM 5-3871  
 FREE FREE

**APT. FOR RENT**  
 Furnished, basement Apt., accommodates four men, two bedrooms, den, all bills paid, phone, kitchen, bath, \$6 a week, 3 vacancies open, 1822 N. Lorraine, call TE 8-6930.

*penthouse*  
 OPEN  
 11 A.M. TILL 11 P.M.

• **THEY SAID IT COULDN'T BE DONE - BUT TODAY'S L&M GIVES YOU-**

**THEY SAID IT COULDN'T BE DONE!**  
 Who would believe you could get college credits by watching TV? But television now offers daily classes in atomic physics — and over 300 colleges and universities across the nation are giving credit for TV courses.

Puff by puff **Less tars**  
 & **More taste**

**DON'T SETTLE FOR ONE WITHOUT THE OTHER!**  
 Change to L&M and get 'em both. Such an improved filter and more taste! Better taste than in any other cigarette. Yes, today's L&M combines these two essentials of modern smoking enjoyment — less tars and more taste — in one great cigarette.

**LIGHT INTO THAT LIVE MODERN FLAVOR!**

© LIGGETT & MYERS TOBACCO CO., 1958

# Delta Gamma's Unique Fir Chest Purchased by Member in Norway

By PEGGY KENNEDY  
Sunflower Society Editor

Not many sororities go half-way around the world to re-decorate their houses, but Janice Knutsen helped the Delta Gamma's do this.

Miss Knutsen, a Liberal Arts sophomore, last summer toured the Scandinavian countries, and brought back a hand carved chest from Norway for her sorority's house.

The chest is of natural fir, and features in its hand carving, the typical Norwegian styling. The chest was purchased in Bergen, Norway, in one of the city's most modern department stores. The store, according to Miss Knutsen, "in some respects is more modern than many of our large department stores."

### Sailed in June

Miss Knutsen, with her younger sister, Kay, sailed in early June, on the Swedish-American liner, the Stockholm. They were guests of their father's relatives whom they had never seen before.

Although they spent most of their time in Norway, they toured the surrounding countries. The city impressing them the greatest was Copenhagen, Denmark.

"There were very few cars in the city, and almost everyone rode bikes," said Miss Knutsen. On weekends, nearly everyone went to the country for camp-outs.

At one point in their trip, they were only five miles from the filming area of the motion picture "The Vikings."

### 5 Meals Daily

The Norwegians eat five meals a day consisting mostly of bread and pastries, according to Miss Knutsen who added "the food was excellent."

The language barrier presented no problem to the travelers. At first, the relatives spoke no English, and the girls spoke no Norwegian. Upon leaving, however, each had exchanged enough of the other's language to be able to communicate satisfactorily.

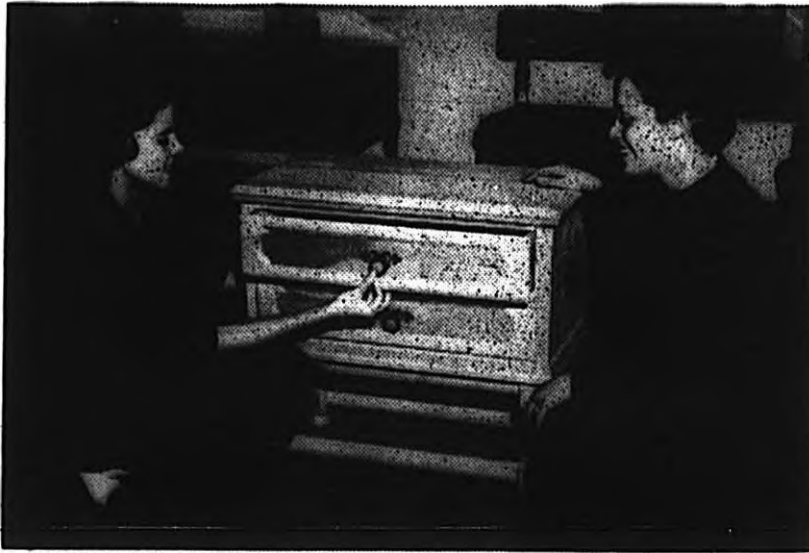
Miss Knutsen also stated that she and her sister learned to speak Norwegian well enough to go shopping. Living with their relatives, and learning the language and the customs, helped each to overcome the feeling of being "just another tourist."

### Saw Norwegian King

One of the trip's highlights was seeing the King of Norway. The King was touring the coastal towns, and landed in an area in which Miss Knutsen and her relatives were on a camping trip. With the King was the United States Ambassador to Norway. The Norwegian people appeared in full native costume, a rare sight for the Americans, and each bore a Norwegian flag with which to hail the King.

Other unusual events were barn dances each Saturday night. The people take turns giving the dances in their barns which they decorate with birch saplings.

After touring many cities and the countryside, the pair flew home in late August, with hopes of returning in the future.



**NORWEGIAN GIFT** — Janice Knutsen shows Peggy Ann Kennedy, both Liberal Arts sophomores, the Norwegian Fir chest which she purchased during her summer visit there.



**JOHNNIE'S CIGAR STORE**  
Humidor Fresh Cigars—Imported and Domestic Pipes  
233 N. Market  
AM 2-9246

**Pied Piper Bookstore**  
Second Hand—Out of Print  
Old — Rare  
Buy — Sell — Exchange  
Come In and Browse  
1749 FAIRMOUNT  
MU 6-1944  
OPEN SUNDAY 1 PM-9 PM

### Registration Change

Pre-registration for night courses for second semester will take place on Friday from 6:30 to 8:30 p.m. and on Saturday from 9 a.m. to noon.

The dates, as they appeared in the schedule of classes, were incorrect, according to Worth Fletcher, registrar.

**BASOM'S**  
1725 East Central  
FOR QUALITY  
PAPERBACKS



**QUICK SERVICE**  
*Welch*  
CLEANERS  
1337 No. Hillside



**TROP-ARTIC MOTOR OIL — TROP-ARTIC BATTERY FLITE-FUEL... A WINNING WINTER COMBINATION**

**BUCK**  **FREEMAN**  
SERVICE MU 4-1511

3832 East 17th

**REALLY SOMETHING TO WRITE HOME ABOUT ... FOR CHRISTMAS**



**REMINGTON SHAVERS!**

Hint for a Remington, ask for a Remington. If it gets really desperate, buy a Remington yourself (it's worth it!). It's the smoothest electric shaver around!

### REMINGTON ROLLECTRIC® FOR MEN

A real man wants, and needs, a real man's shaver... a man-sized Rollectric! Six diamond-honed cutters... largest live shaving area of all! Exclusive Roller Combs roll skin down, comb whiskers up to get your Heavy Beard and Hidden Beard: whisker bases below ordinary shaving level. You get close, fast, comfortable shaves that last hours longer! 110V, AC-DC.

### REMINGTON PRINCESS FOR WOMEN

Gentle, feminine shaver. Petite, yet with four times as much live shaving area as any other ladies' shaving implement. Exclusive Guard Combs make it so safe it can't chafe; you can shave back and forth—no need to worry about which side to use for legs or underarms. You can apply a deodorant immediately. Three chic colors: Ivory, Pink, or Blue. AC only.

PRODUCTS OF *Remington Rand Electric Shaver*, DIVISION OF SPERRY RAND CORPORATION, BRIDGEPORT, CONN.

## Junior Year in New York

An unusual one-year college program

Write for brochure to:



Dean F. H. McCloskey  
Washington Square College  
New York University  
New York 3, N. Y.