

Alumni Association Honors Lieurance at Dedication



DR. THURLOW LIEURANCE, center, dean emeritus of the School of Fine Arts, is shown admiring a recognition plaque which he received Tuesday night at the FAC dedication. Dr. Lieurance was honored by the University Alumni Association. With the former dean are Oliver Elliott, association president, left, and Byron S. Chappell, awards committee chairman.

Boeing V-P Accepts Job On Development Board

J. E. Schaefer, vice-president of the Boeing Airplane Company and general manager of the Wichita division, has accepted a position on the University's newly-established Development Board.

The announcement of Mr. Schaefer's acceptance was made Thursday by Dr. Harry F. Corbin, president of the University.

In disclosing Mr. Schaefer's addition to the group, Dr. Corbin stated: "We are gratified and honored to have Mr. Schaefer join with other distinguished citizens in launching this permanent effort to enrich the quality of the University program."

The University development program will be aimed at cultivating private gifts and bequests on a

permanent basis. The development board will serve as the agency through which the program will be executed.

Mr. Schaefer, in accepting the position, joins a group of prominent Wichita civic and business leaders, already serving as members.

Representing the Board of Regents on the development group are Henry Levitt and Robert B. Morton. President Corbin serves as chairman of the development board.

Council Approves Publicity Agency Open on Part-time Basis in Fall

The Student Council approved plans Monday night to set up a promotion agency for campus organizations.

Designed to provide assistance to groups in publicizing special events, the agency will be established on a part-time basis starting next year.

Salary Limit Set

The motion, as adopted by the Council, includes hiring of a publicity co-ordinator at a salary of not more than \$300 a year.

Establishment of the agency was recommended in the report of the Council's committee on campus activities and organizations. Hal Rhodes, chairman of the committee, presented the report.

Acting on another recommendation of the committee, the Council took action to set up a calendar scheduling campus activities in advance of the semester. Proposed as a recommendation to the Administration, it is hoped that the calendar will eliminate overlapping in scheduling events.

Plan 21-Member Congress

A new representation plan was proposed to the constitution revision committee by Council President Janet Noel.

The plan calls for a student congress with 21 delegates. The congress would be made up of one representative from each of the five colleges of the University, one additional representative for each 500 students, and sufficient delegates at large to make up the 21-member body.

No action was taken on attempts by members of the Council to submit the new constitution to a student referendum prior to the spring elections.

Opposing a move by Miss Noel to submit the proposed constitution at a special election this spring, Don Rude said such an attempt would not allow campus political organizations sufficient time to reorganize their campaigns. Such reorganization would be necessary if the new constitution is adopted, he said.

Student Meeting Discussed

Recommending an all-student meeting to present the constitution, prior to a referendum next month, Hal Rhodes pointed out that all groups on the campus have participated in the committee meetings.

"The meetings have been open, and all organizations have been notified to participate at the constitution committee meetings. Let's not let it bog down in campus politics," Rhodes said.

Arguing that such an election this spring would not allow students enough time to consider the proposed constitution, Stan McGehee, chairman of the revision committee, opposed submitting it to a student vote too soon after the final draft was received by the Council.

A final draft of the new constitution would have to be submitted to the Council at two meetings before presentation to the student body, according to Miss Noel.

An appropriation of \$50 was

THE SUNFLOWER

OFFICIAL STUDENT NEWSPAPER

Vol. LXI—No. 48

University of Wichita, Wichita, Kansas

April 12, 1957

Nationalization Looms Following Regents' OK

By MARY SIMMONDS and DON STEPHAN
Sunflower Staff Reporters

University "Greeks" can anticipate national affiliation next January. Although the nationalization issue is not completely resolved, a step forward was taken Monday when the Board of Regents conditionally approved opening the campus to national social fraternities and sororities.

Award Dinner, Photo Field Day Planned

By JACK MATTIS
Sunflower Staff Reporter

The annual Journalism Awards Banquet and Photo Field Day will be held April 29 in the Commons Building.

The Photo Field Day will begin at noon with a luncheon in the Shocker Room for University photo class members and professional photographers from the Wichita area. A seminar will follow at which recent developments in the field will be discussed.

Photo Contest Planned

High school students from the region have been invited to compete in the photo contest, which features top pictures in the college and high school divisions. Each division will be judged separately, and entries will be displayed in the Commons Lounge from 1 to 9 p.m.

Garry Millsap, journalism lecturer, has been designated Photo Field Day coordinator.

The Awards Banquet will begin (Continued on Page 7)

Rep. Judd To Speak On Forum

Dr. Walter H. Judd, Republican Congressman from Minnesota, will be the final speaker of the 1956-57 University Student Forum Board season.

He will speak in the Commons Auditorium at 8:15 tonight.

Dr. Judd, a physician, has been a medical missionary in China and is considered an authority on the subject of American foreign policy in the Pacific and Orient.

In 1925 he went to China under the Foreign Mission Board of the Congregational Church where he built, organized, and managed a 35-bed hospital for five years.

Supervises Hospital

His next two years were spent in the United States where he did post-graduate work. He returned to China to become superintendent of a 125-bed hospital during the Japanese revolution. He continued his work there until the hospital was able to support itself.

Dr. Judd returned to the United States where he was elected United States representative from Minnesota. During this time, he served with the foreign affairs sub-committee which required him to make a number of trips to Europe.

Early Leader

Dr. Judd was one of the first exponents of the belief that the United States' salvation lay in an intellectual and unselfish cooperation. (Continued on Page 8)

This recommendation was contained in a report by Dr. James K. Sours, dean of students.

Provisions Set

"However, I would like to stress to the students," Dr. Sours commented, "that the Board's action was subject to certain provisions, and was in no way an unqualified vote for nationalization."

These conditions were recommended by Dr. Sours and Mrs. Justus Fugate, dean of women:

- (1) The President and the dean of students will select those nationals deemed able to serve the University's best interests.
- (2) Providing no adverse information has been obtained concerning those nationals presently under consideration, up to and including "Greek Week," May 6, 7, and 8.
- (3) Problems of property ownership and finance must be settled to the mutual satisfaction of locals, nationals, and the University.
- (4) No national chartering will be made prior to Jan. 1, 1958, although "preferencing" of groups may take place prior to that time, at the discretion of the Administration.

Remain Responsible

These safeguards would seem to insure that all social organizations on the campus, regardless of outside affiliation, will remain equally responsible to the University.

The Board of Regents' action marked the first successful bid for "Greek" nationalization at the University. A student movement in 1954 failed to gain Administration approval.

Campus social organizations now feel that this step toward nationalization will be of mutual benefit to the University and the (Continued on Page 8)



A PLAQUE FOR THE OUTSTANDING exhibit at the Engineering Open House Feb. 22-23, was presented to the electrical engineering department by three members of the American Society of Professional Engineers. From left to right are: Spencer Delemeter, Walter Burnham, Kenneth Hale, Bill Brown, Howard Hamilton, assistant professor, and David Henderson.

Editorial

By Their Works

It's almost time for spring elections to hit the campus once again.

So, it might be a wise idea to quietly evaluate the work of this year's Student Council before the political hailstones begin to fall.

Effectively led by Janet Noel, president, the Council has entered into many phases of campus life previously neglected or ineffectively dealt with by the Council.

The Council succeeded in gaining an extension of the 1957-58 Easter and Christmas vacations.

In December, the Council held a special convo to raise funds for the stricken people of Hungary.

When next year's budget was planned, the Council included provisions to aid many small campus clubs.

Partly at the behest of the Council, administrative offices now are open to students during the noon hour.

Finally, the Council has prepared a new government constitution which the campus will vote on in May, a long needed improvement.

Yes, this year's council has been strong and active. Remember that on May 10, when you go to the polls.

Wit, Wisdom Combined In 'Teahouse' Production

For its season's last performance, the Wichita Community Theatre closed the season Saturday with wisdom born of laughter.

"The Teahouse of the August Moon" directed by Mary Jane Woodard combined oriental wisdom with occidental wit. Sakini, the interpreter and narrator, acted by Brad Hammond, and Captain Fisby of the United States occupational army as well as the rest of the cast excellently portrayed the troubles of democratizing a small Okinawan village.

Staging Adds Reality

Settings, costumes, and lighting all dramatically reflected Oriental culture and beauty. This staging, combined with a jeep and a live goat, gave the theater an air of

Teahouse Causes Trouble

Not too convinced that the village's desire for a teahouse in preference to a pentagon-shaped school was in accord with military plans, the captain let them build a Geisha house with American-supplied lumber. The materials were sent by blustering Colonel Purdy and intended to orient the islanders by building a school.

The gentle satire was intensified by the tactics and antics of Col. Wainwright Purdy of the

reality. Judging from the performance of the play as a whole, its success was not "occidental."



The Sunflower

Vol. LXI April 12, 1957 No. 48

Published each Tuesday and Friday morning during the school year by students in the department of Journalism of the University of Wichita except holidays, during vacations and examination periods. Entered as second class matter, September 24, 1916, at the Post Office in Wichita, Kansas, under the act of March 2, 1879.



HOW MUCH IS THAT DOGFISH IN THE WINDOW?

Dear Mom and Dad (writes Zelda May Nirdlinger, soph).

You have been asking me to account for all the money I spend. There follows a day by day summary of recent expenditures. Don't forget, you asked for it.

MONDAY:

- \$2.78 - telegram to the Secretary of the Army, offering to go instead of Elvis.
- \$0.26 - pack of Philip Morris, my favorite, and yours, if you know a good thing when you taste one!
- \$0.50 - sorority fine for oversleeping and missing my first hour class twelve days in a row.



I bought a rooster named Ralph

\$2.95 - I bought a rooster named Ralph to wake me in the morning. (Can't sleep with an alarm clock ticking all night.)

TUESDAY:

- \$0.50 - sorority fine for not cleaning my plate at dinner. (I just couldn't! Dinner was Ralph.)
- \$0.50 - sorority fine for dating undesirable boy. (Roderigo is not undesirable! Some people say he is "fast" and a "devil" but I say he is just insecure. Why else would he go steady with eight girls?)
- \$0.26 - pack of Philip Morris. What joy! What zest!

WEDNESDAY:

- \$557.38 - a motorcycle for Roderigo. (He is giving up all his other girls for me, but they are so widely scattered that he needs a fast conveyance to go around and tell them all goodbye.)
- \$0.26 - pack of Philip Morris. (Have you tried them yet? If not, you've got a big treat coming. Light one soon. Light either end.)

THURSDAY:

- \$0.50 - sorority fine for staying too long in the shower. (Gee whiz, a girl gets mighty dirty polishing a motorcycle!)
- \$0.52 - two packs of Philip Morris - one for Roderigo. (Dear Roderigo!)

FRIDAY:

- \$0.26 - pack of Philip Morris - a happy smoke for a happy day. Yesterday Roderigo broke with the last of his girls, and today he is mine, all mine!
- \$8.57 - new dogfish for zoology. (I was dissecting a dogfish in zoology when I happened to look out the window and see Roderigo riding by with Mary Ann Beasley on his buddy seat. I got so upset I threw the dogfish at them.)

SATURDAY:

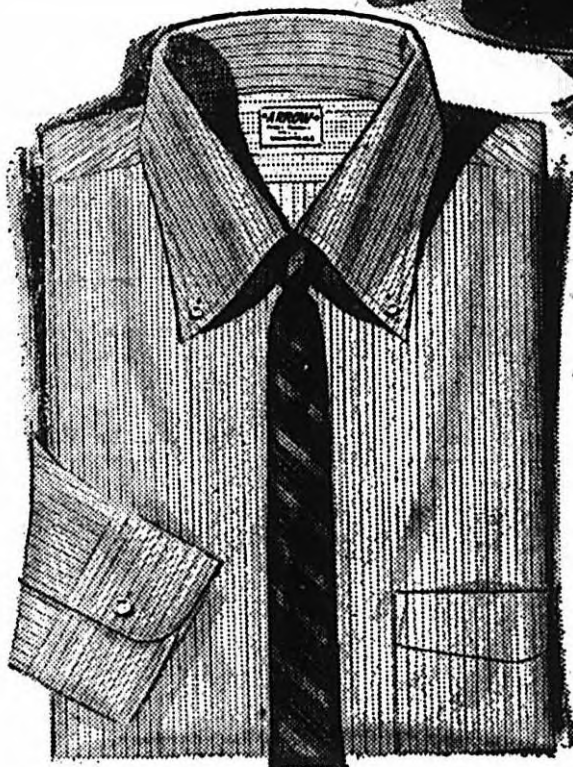
- \$2.59 - a carton of Philip Morris, one pack for me, the rest for Roderigo. (I was foolish to be angry about Mary Ann. Roderigo explained that she meant nothing to him - just helping him with English lit. Similarly, Grace Krovney is helping him with Spanish, Betsy Pike with econ, Mazda Notkin with psych, Lola Tweet with phys ed, etc. The least he can do is give them all Philip Morris.)

Well, mom and dad, you can see how expensive college is. Send money. . . . Love and kisses, Zelda May

© Max Shulman, 1957

The price may vary from place to place, but Philip Morris continues to be a natural smoke that daunts no purse, however small. It is made in regular and long size by the sponsors of this column, and is ignitable at either end.

Last season's hit is back - bigger than ever!



This Arrow University oxford shirt was such a smash hit last season, you asked for an encore. And for good reason! The collar is button-down—both front and center back. Full length box pleat in back. Pencil-line stripes on white backgrounds—plus white and five solid colors. Arrow University, \$5.00 up. Shantung stripe ties, \$2.50.

ARROW →

—first in fashion

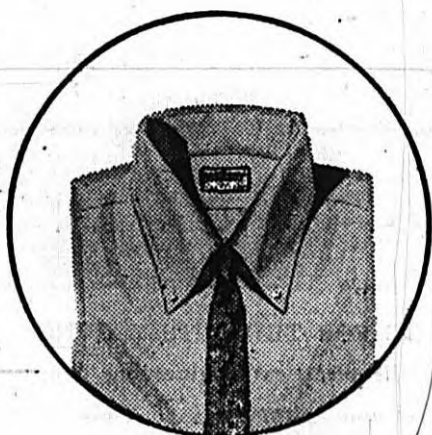
SHIRTS • TIES



These you'll like! Arrow University oxford shirts in white, solid colors and pencil-line stripes. Every one tailored in the true Ivy tradition. The collar buttons down in front and center back (Arrow's button placement gives a more natural collar roll) . . . full length box pleat in back. Arrow University, \$5.00 up. Choice of foulard pattern ties, \$2.50.

New

Ivy-Right Arrows



Social-Lights By Kathy Rhodes

Spring is here and time has come once again for the new spring and summer fashions.

Today's Sunflower places emphasis on the question, "What will I wear this spring?" From all indications, Ivy League is taking over men's clothes this season. The modern clothing trend seems to be a return to the "gay twenties," complete with the straw and felt, flat topped hat.

Stripes and colors are decorating blouses, skirts and sports wear in women's fashions. According to the latest reports, women are also going back to the "gay twenties" look with longer swimming suits.

Back to campus life, Delta Omega will host an hour dance with Pi Alpha Pi Monday evening.

Pi Kap will hold its spring formal tonight at the Dolphin Club. The formal dance will begin at 9 p.m.

More elections were held this week. Students Forum board chose their new officers Tuesday evening. The results are not yet known. The Board's last banquet this season will be held tonight, in honor of Walter H Judd, republican congressman from Minnesota, and forum speaker.

Alpha Tau Sigma held a benefit bridge party last Friday evening. Attending were: Sonya Moore, Jack Johnson; Karen Moore, David Dalke; Carolyn Peel, John Foster; Carole Sperry, Jeanette Depew, Carol Osteen, Eleanor Hoffman, Sandra Kirchoff, Beverly Jacobsen, Jacque Anderson.

Annette Wiehl, Butch Van Dusen; Jodie Evans, Dave Johnson; Sue McClure, Bill Little; Anne



SANDRA KIRCHHOFF models a two-piece, knitted short outfit designed by Helen Harper. The lined shorts come in solid or striped color with tee shirts to match. These outfits may be purchased in red, navy, or blue and are priced at \$4.98. The outfit is available at Flo Brooks.

Lasater, Pat Little; Mary Lou Snavelly, Harlow Woods; Mary Harrell; Kay Wittman, Paul Turner; Phyllis Brown, Paul Hampel; Donna Reed, Ford Duke; Harold and Sue Dwyer; and Sharon Good and Floyd Farmer.

Striped Suits For Swimming Reflect 90's

More material is going into swim suits this season—most of it striped.

The one-piece striped suits give the effect of an elongated tee-shirt. Others have camisole tops with matching knee-length pants reminiscent of boxing costumes in the Gay Nineties.

These are only the extremes. One manufacturer features a highly feminine pattern of strawberries and cherries on elasticized cotton with narrow shoulder straps.

The cool elegance of a slim skirt silhouette characterizes a faille Latex number. The camisole top, outlined in a contrasting color, has tiny shoulder bows. Colors of flax, porcelain blue, peach, and black are the season's newest.

The belted bathing suits, revived from the golden twenties, shows up again in black and white stripes. The cotton knit suit boasts a V-neckline.

Many cotton knit suits are featured that go down to the water but not into it.

This season designers will go to any length to keep you in wonderful shape.

Fashions for Spring

Sport Coats

- All wool and silk blends
- Light and medium tones
- Two and three button styles

\$19.50 to \$35.00

Contrasting Trousers

- Wools, Rayons, Silk, Dacron Blends
- Latest Spring colors

\$5.95 to \$17.50

Sport Shirts

- Short Sleeves
- Ivy and Continental styles
- Over 2000 to choose from

\$1.98 to \$5.95

GAY'S MENS WEAR

WICHITA

130 North Main

Seventeen Year's in Same Location



"Cutest Clothes in Town"

from

Russ Calkins

Here's a wonderful new sleeveless Sheath Cocktail dress—in Maygashel Linen. Ever so nice for cocktails or dinner with its spectator jacket.

In Beige Only \$55.00

Other Carlye Dresses and Easter Ensembles \$35.00 to \$69.95

Russ Calkins

917 Parklane

Glendale Side

Dial MU 4-2113



"COKE" IS A REGISTERED TRADE-MARK. COPYRIGHT 1957 THE COCA-COLA COMPANY

Sociology

Spin a platter... have some chatter... and sip that real great taste of Coke. Sure, you can have a party without Coca-Cola—but who wants to!



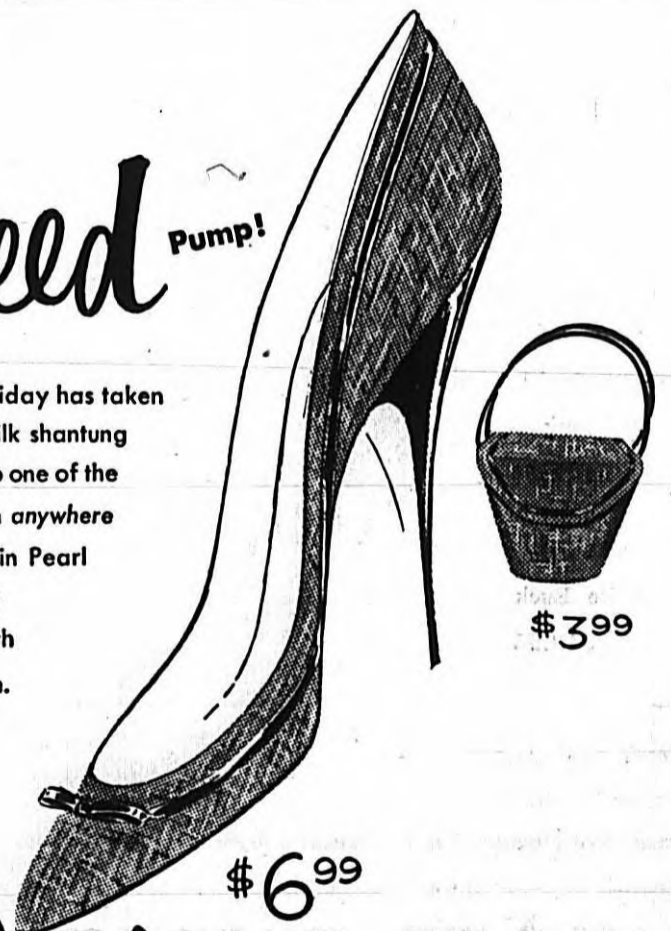
SIGN OF GOOD TASTE

WICHITA COCA COLA BOTTLING CO.

"Coke" is a registered trade-mark. © 1956, THE COCA-COLA COMPANY

Holiday
Imagine... a tweed Pump!

Yes, ma'am! Holiday has taken the finest tweed silk shantung and fashioned it into one of the prettiest pumps seen anywhere this Spring! Have it in Pearl Gray with Black Patent leather trim or Beige with French Bread leather trim.



\$3.99

\$6.99

Holiday
FINE SHOES

Up-to-Date Collegiate Styles Feature...

Summertime Sportswear

if you want high fashion at surprisingly modest prices, come in and see the smart new styles arriving daily

- * Slim Jims
- * Shorts
- * Separates

Wesley Dress Shop

"Smart Clothes at Popular Prices"
513 North Hillside



Summer Suits

with contrasting
GABARDINE Slacks

\$44.75 Suit

\$12.95 Xtra Slacks

- Wear as a Suit
- Sport Coat and Slacks
- Slacks with Sport Shirt

Newest 2 and 3 button models with patch or flap pockets in the latest Summer colors.

- Silk and Worsted
- Popular Flannels

Big Selection - Sport Coats

— \$29.75 —

Harvey

122 E. Douglas

Charge it! Pay in 30-60-90 days at NO EXTRA Charge!

KMUW Emphasizes Quality And Practical Experience

Emphasizing practical experience and quality rather than size of listening audience, campus radio station KMUW daily broadcasts a program of music, education and news.

"We produce the finest in high fidelity classical music and have many fine educational programs," stated George D. Goodrich, assistant professor of speech and director of KMUW. East, chief engineer; Terry Gladfelter, assistant program director; Marc McLean, chief announcer; Janice Pfeifer, librarian; Dave Franssen, news director; and Street-Funk, sports director.

The classical music on the station consists of such great composers as Debussy, Beethoven, Mozart, Haydn, and Schubert. The educational programs consist of debates, interviews of famous personalities, and reports on national and international news.

The main byword of the station is to bring the people of their listening audience better production and musical entertainment.

KMUW air time is from 3 to 10 p.m., Monday through Friday. On Saturday from 12 to 4 p.m. The station may be found on 89.1 on the FM dial.

KMUW management includes: Professor Goodrich, director; Mike Russell, program director; Larry

Films Scheduled

The 1937 Olympic Games held in Berlin will be the subject of the Film Society's final showing, April 16, at 8 p.m., in the Commons Auditorium.

Against a background of political tension, "Olympia," a German documentary with English sub-titles, portrays the outstanding athletic events of that year.

Top athletes were Jesse Owen and Helen Stevens. The United States won first in the 1937 Olympic Games on the unofficial point system.



PETTI CAPTURES the "Pride and the Passion" of Spain in Lowenstein's Everglaze cottons, here modeled by Judy Vail. Wash and wear, with little or no ironing. Just part of a complete selection of dresses and sportswear with that Spanish influence. The Tuck or Tie shirt is priced at \$5.98 and the Contour belted full skirt is priced at \$10.98. These fashions come in sizes from 7 to 15 and are featured at Innes' Young Kansan Shop.

Dorm's Formal To Be April 26

Co-eds living in Grace Wilkie Hall are busy preparing for their spring formal, April 26.

The annual affair has not been named yet; but it will have an "underwater theme," said Glenna Heltzel, chairman of the dorm's social committee.

The spring formal is an annual affair for the coeds and their dates. This year approximately 125 will be present for the celebration in the dorm cafeteria.

Chaperones for the evening will be: Mrs. Justus Fugate, dean of women and Mr. Fugate; Howard E. Ellis, head of music education department and Mrs. Ellis; and Mrs. Virginia Andrews, assistant house mother.



Young Kansan

Campus Wear

sparkling selections of collegiate fashions for schooltime--datetime, or playtime.

See "The Pride and the Passion" Sportswear modeled by Parnassus Queen Judy Vail in this issue of the Sunflower . . .

YOUNG KANSAN SHOP

Innes Mezzanine, Broadway

This week
HEADS

spotlights

WINTHROP

Black calf with gray

Shantung

Brown calf with brown

Shantung

\$13.95

Black calf with

White Buck

\$13.95

Here's another of our new Winthrop Styles. Traditionally made of only quality materials by expert craftsmen.

HEADS

The Plaza Store 123 East Douglas Lincoln Heights Village
2718 Boulevard Plaza Douglas at Oliver

WU Alumni in N.Y. Scheduled to Meet

New York branch of the University Alumni Club has scheduled its first of two meetings April 11, at the Harvard Club in New York, according to Beulah Mullen, executive secretary of the Alumni Association.

The Alumni club of New York is made up of former University students who live in the New York area.

JOHNNIE'S CIGAR STORE
Humidor Fresh Cigars— Imported and Domestic Pipes
AM 2-9246 233 N. Market

MILLER
NOW SHOWING
KIRK DOUGLAS as Vincent van Gogh
ANTHONY QUINN as Paul Gauguin
"LUST FOR LIFE"
Cinemascope - Color

ORPHEUM
NOW SHOWING
ROBERT RYAN
ALDO RAY
"MEN IN WAR"
The part of the Military Machine that bleeds.

...Stripes and Lots of Gay Color Mixture

'57 Spring Fashions Emphasize Versatile Separates, Gay Colors

With spring come campus wardrobe "magic" columns.

Separates will remain the leading favorite with college women. The versatility of separates is one of the main reasons for their popularity.

Although separates offer unlimited variety, they require careful wardrobe planning to achieve a coordinated effect.

Take Inventory

The first step in planning a spring wardrobe is to take a complete inventory of the closet. Try on each skirt with blouse and jacket before a full length mirror. All accessories, such as hats, gloves, scarves, flowers, belts and shoes, should be included in this check. Accessories have a way of becoming lost or forgotten in the back of drawers.

The inventory should reveal how many costume changes are possible with your present wardrobe. Also, it should reveal where inexpensive additions would improve the wardrobe.

Consider Several Questions Before making a purchase it would be advisable to consider each of the following questions:

(1) Is your wardrobe prepared for any occasion? For instance, there may be many changes of clothing in the closet; but if most of them are sports clothes there will come an occasion for which sport clothes are not appropriate. Last minute shopping produces costly wardrobe "misfits."

(2) Is your wardrobe simple? This does not mean it cannot be colorful. A flame red or striped dress can be just as basic as perennial black.

As for material, there is no safer choice than cotton. No doors are shut to King Cotton! It is used by America's most important designers with dazzling results.

Consider Cleaning

(3) Did you consider cleaning bills when planning the wardrobe? With the new, drip-dry fabrics, cottons can be kept crisp, fresh and neat with a minimum of care.

(4) In planning the wardrobe, have you considered your own tastes? You may wish to center your wardrobe about separates instead of dresses or suits. Don't worry about "basics!" An item becomes basic only when it satisfies that requirement in your wardrobe.

(5) Have you kept the climate in mind while planning your wardrobe? Climate will influence separates selection. Spring weather

varies with each area. In this locality during the past few years temperatures have been unusually warm for springtime.

Variety of Skirts Needed

You may have a decided preference for either straight or full skirts. However, if you look well in both, it would be wise to have a few of each to allow for changes in mood.

Blouses come in a galaxy of colors. Styles and textures run the gamut from sleeveless to dolman, from tissue gingham to brocaded chambray.

Plan separates carefully and with your present wardrobe in mind.



A LOVELY JANTZEN swim suit is modeled by Joan Stromeier. This polished cotton and nylon suit comes in light blue, toast, or pink and is available at Russ Calkins.

European Shoes Become Popular

European styling is becoming more prominent in men's shoes along with the Ivy trend, not only in clothing but in shoes.

The Ivy League trend in shoes leans toward casual wear such as the plain toe cordovan or plain toe oxford. These two styles are considered the authentic campus shoe for today's fashions.

Campuses Go to Saddle Shoes In the Eastern and some Western colleges, the campus shoe is the black and white saddle.

The dirty or natural shag buck oxford has replaced the white buck oxford on many campuses. It is in good taste to wear these shoes with Ivy League chinos or with any sport out-fit and they can be worn with any color slacks.

Tassled Shoes Growing Popular The tasseled slip-on has also found its place in the fashion picture. They can be worn for business, casual or campus wear and are also acceptable for formal wear.

With the influence of European styling gaining ground every season, the new look in men's shoes tends to be the continental slip-on, which readily adapts itself to the varied demands of business, leisure or campus wear.

For spring and summer, we again will "hit the silk." Silk and leather combinations in brown, blue and grey will be leading the Easter parade. Buck skin white, brown and white will also be more prominent this year than ever before.

YALE'S WEDDING SERVICE
Complete Paper Trousseau
Albums — Bibles — Missals
420 N Edwards FO 3-3900

BAKING SERVICE
Weddings - Birthdays - Showers
Baked and Decorated
Tier Cakes - Sheet Cakes
MRS. JEAN COUNT
2656 Ellis AM 2-8032

typically... Flo Brooks



Miss Sandra Kirchhoff, Press Queen Finalist, models one of the many new co-ordinates from our SPORTS CELLAR. Ideal for Spring and Easter, this model by Wipett is in pink Orlon and Cotton ONLY \$17.98

Flo Brooks, Inc.
LINCOLN HEIGHTS VILLAGE - DOUGLAS OF OUNER

KRAMER JEWELRY at Levitt's

Lovely Pastel Colors for Spring!
— White — Blue — Pink — Coral —

Necklace \$5.00 Bracelet \$3.00
Ear-rings \$2.50
(Others up to \$25.00)

SINCE 1910

Many other beautiful styles to choose from

Levitt's

We carry all the famous Brands

111 So. Broadway

ICE!

one cube . . .

... or a **BASKETFUL** Automatically!

ONLY *Servel* THE **GAS** REFRIGERATOR
SERVES LOOSE CUBES WITHOUT TRAYS
and puts them in a basket automatically.

NO TRAYS TO FILL, SPILL, PRY LOOSE OR REFILL!
GAS DOES IT BEST . . . COSTS FAR LESS!

THE GAS SERVICE CO.
Natural Gas for home and industry

Conservative Styling Influences Men's Garb This Spring

By KATHY RHODES
Sunflower Society Editor

Ivy Style Comes To the West

Ivy League trends in clothing have worked their way from the eastern part of our country to the West.

Ivy League is not a fad but a new concept of clothing with conservative pattern and colors. Universities such as Yale, Purdue, and Harvard started the trend.

Sport Coats, Suits Similar
Sport coats and suits, in this new wearing apparel, are similar with one exception, the suits have a more subtle color. Both have very little or no padding in the shoulders. The collar sits low on the neck and is fitted at the waist line so that it flairs out over the hips.

The coat has three or four buttons. Only the two top buttons are to be buttoned according to Ivy League fashion.

Trousers fit lower on the hips than most styles, with a slight taper in the leg.

Waist Bands Have Buckle
There is a set-on waist band with a buckle in the back to give it a special look of individuality in clothing. The cuff of the trousers touch the top of the shoe with no break, providing the Ivy League look.

A pin-collar that buttons down the collar, is considered "Ivy." The material is oxford cloth. The button-down shirt is more prominent in the Ivy League trend. It has two buttons in front and a button in the back to which the collar is fastened. There is also a pleat in the back of the true "Ivy" dress shirt.

Patterns in the "Ivy" dress shirt include the tattersall plaids, small checks, candy stripes and solid colors.

Cuffs Differ
The sport shirt has the same characteristics as the button-down collar with one exception. They

Fashion changes for men this spring will influence such wearing apparel as suits, shoes, shirts, sports clothes and hats.

There is no limit to the college man's choice in suits this season. The most interesting change in suitwear is the handsome new narrow collar and fabric effect which will be on the market in all stores.

Suits Single Breasted
The suit, most clothes-conscious collegiates will choose, is the single breasted and narrow collar suit in muted glen plaids and subtle solids.

Shoe wear on campus, previously over-run with white bucks, may be expected to take a conservative, businessman turn this spring.

Because they blend so well with the now popular silk fabric suits, the most popular men's footwear will be gray silk on black calf leather. Florsheim leads the way with these styles.

Most "name" shirt manufacturers have developed a strictly American shirt for spring and summer wear. Perfect company for any suit is the subtle check, striped or solid color shirt. Buttoned and small collared, the most popular shirts will be lightweight and conservative.

Raincoats Inexpensive
Raincoats are now high on the fashion market. The spring sportsman may find himself in need of a lightweight rain and windproof

have a two-button or one-button cuff.

Socks worn with Ivy League look should be of solid colors either long or ankle length.

Neckwear should be in a subdued tone with the following patterns predominating; tartan plaids, small checks and rep-ties.

Tie Colors Confusing
Colors are so dark that it is hard to tell the colors of the tie until placed against a dress shirt.

No wardrobe is complete without the "Ivy" cap which is a flat English style cap with a buckle in the back.

jacket. The McGregor-Doniger Company of New York has developed a handsome inexpensive wrap called the "Drizzler," designed especially for the active man.

Carefree, the jacket is washable and requires no ironing. The most popular colors this year are mustard tan, red, white and lake blue.

This year the college men will be wearing hats, according to reports from the Ivy League centers.

Straw Revival Seen
Men on Eastern campuses will wear the narrow brimmed, wide banded and flat-topped fur felts early this spring, matching their favorite dark suits. In early summer, they will switch to the straw flat-top to match their lighter suits.

Some observers even predict a revival of the sailor straw which was popular in the late 1920's and 1930's.

Say... "Pepsi Please!"



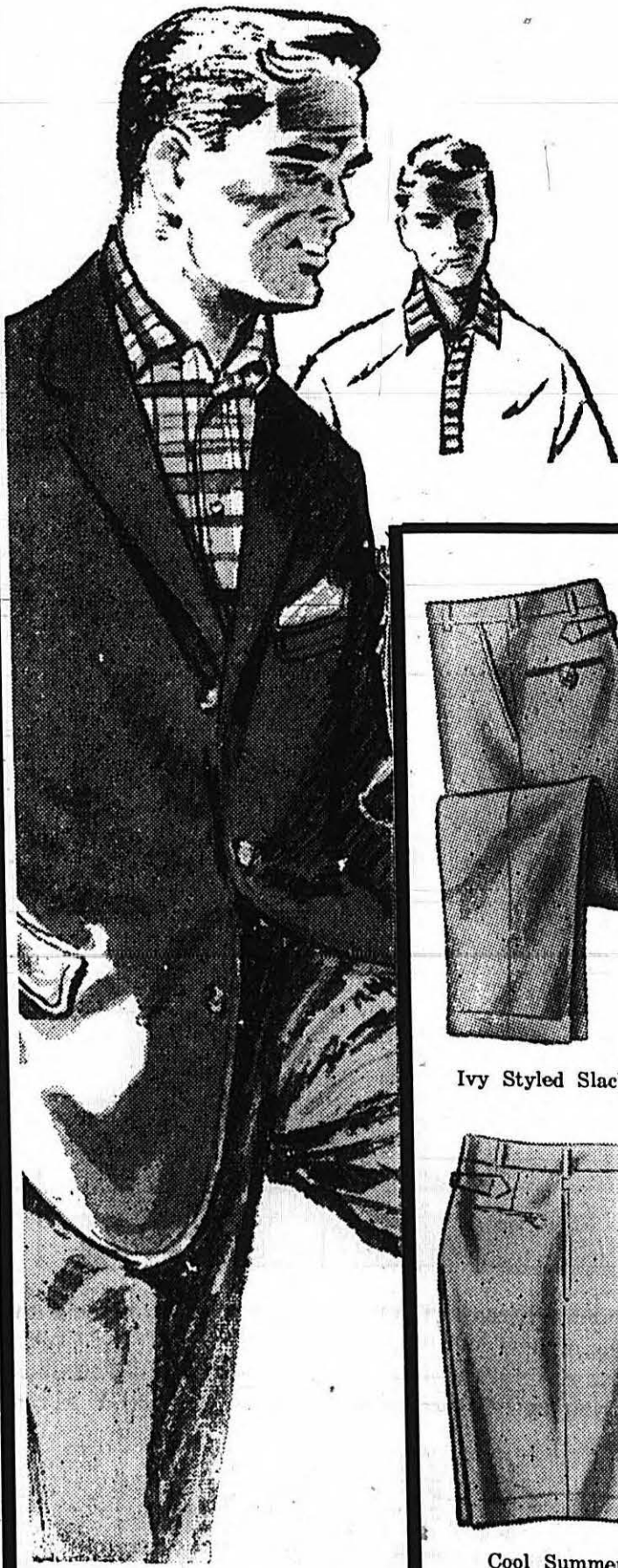
Here they are!

Great New Ensemble for Spring

BAY BREEZEWEAR

by **McGREGOR**

Campus favorites with the rich, lustrous look of polished cotton, rugged and casual... yet very much dress up, too. And they're completely washable too! Exciting New Colors!



Bay Sportcoat
\$25.00

Bay No-Pleat Slacks
\$7.95

Spiced Bay No-Pleat
Bermuda
\$5.95

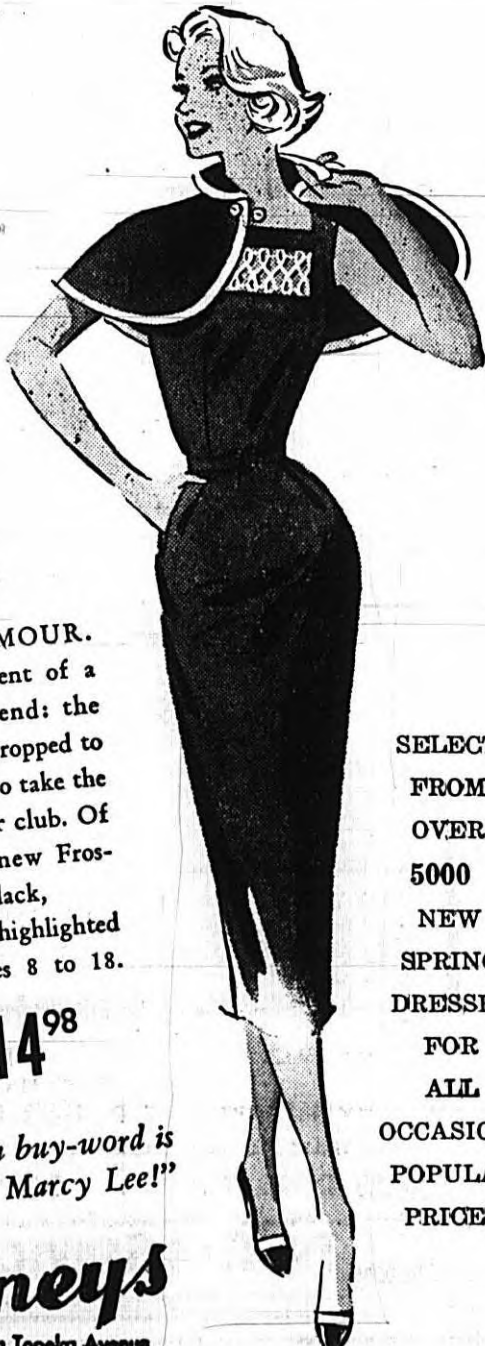
Spiced Bay Knit
Sport Shirts
\$4.00

Spines

Downtown
East Douglas
South Seneca

Marcy Lee
DRESSES

featured in
MARCH GLAMOUR



cape-collar cooler

As seen in GLAMOUR.
Marcy Lee's exponent of a strong fashion trend: the cape. Here, short-cropped to collar-proportion to take the sheath to office or club. Of Fuller's famous new Frossette® cotton. Black, ... highlighted with white. Sizes 8 to 18.

as illustrated **14⁹⁸**

The fashion buy-word is
"Show me Marcy Lee!"

Croneys
115-117 South Topoka Avenue

SELECT
FROM
OVER
5000
NEW
SPRING
DRESSES
FOR
ALL
OCCASIONS
POPULAR
PRICED



COMPETING FOR NATIONAL HONORS at the National Independent Students Association Convention, April 16 through 18, at Urbana, Ill., will be pretty Marta Diaz, 1957 ISA Sweetheart.

Award Dinner

(Continued from Page 1)

at 6 p.m. in the Pine Room. The KANS award will be presented to the outstanding journalism senior, and the top first-year reporters will receive gifts. Sunflower and Parnassus staff selections and journalism scholarship winners will be announced. Awards will also be given for the best feature article and the best student-designed display advertisement.

Banquet Traditional

"The combined Photo Field Day and Awards Banquet has become an annual tradition," said Paul F. Gerhard, assistant professor of journalism, "and is a means by which journalism students, both seniors and underclassmen, have a chance to meet the practicing

newsmen and newswomen of the region. It also provides an opportunity to give recognition to student journalists who have done outstanding work in their field during the year."

Guests will include University faculty members, professional journalists, high school editors from Wichita and surrounding communities, and students majoring and minoring in journalism.

Editor to Be Toastmaster

Don Rude, editor-in-chief of the Sunflower, will serve as toastmaster. Professional guests will be introduced by Lester Rosen, director of public relations. The University Press Club is in charge of the program arrangements.

Tickets may be obtained from Sunflower and Parnassus staff members.

ISA Sweetheart To Attend Meet In Urbana, Ill.

The 1957 Independent Student Association Sweetheart, Marta Diaz, will represent the University in the National ISA Sweetheart contest.

Miss Diaz will compete with candidates from approximately 50 schools at the group's convention, which will be held at Urbana, Ill., April 16, 17, and 18.

In addition, Miss Diaz reigned as queen of the Annual ISA Sweetheart Dance here, last February. Others delegates to the convention will be Regina Dickey, Fine Arts junior, and Richard Maple, Engineering junior.

The National ISA Sweetheart will be selected by the men's organizations.

In addition, displays, scrapbooks, and projects of ISA groups from around the nation will be on view at the convention.

"I am getting very excited about this trip," Miss Diaz said recently. "Since I am a foreign student, I think this will be a great experience and a wonderful memory," she added. Miss Diaz is a native of Peru.

"I feel very proud to represent the ISA, because of its high ideals in the development of healthy minds, bodies and souls," she added.

The local chapter of the ISA, she commented, is the only ISA chapter in the United States which operates a chapter house.

"This," she said, "shows great effort and prosperity."

PATRONIZE YOUR ADVERTISERS

FAC Facilities Dedicated To Coeds Killed in Wreck

Rooms dedicated to the memory of two University coeds who died in an automobile accident last fall have been opened in the new Fine Arts Center.

A violin studio and student lounge have been dedicated to the property of Miss McClanahan, Mary Catherine McClanahan, a violin student, and Marjorie Cloninger, a string bass student.

The two coeds died in a auto crash near Amarillo, Texas, while returning to the campus from a concert with the Amarillo Symphony Orchestra.

The violin studio of James Cesar, associate professor of string instruments, is being dedicated to Miss McClanahan, while the lounge will commemorate Miss Cloninger.

A baby grand piano, formerly the property of Miss McClanahan, has been donated to the studio by her mother. Miss McClanahan's music, bound in leather and bearing her name, will also be housed in the studio.

The colorfully decorated lounge will contain a piano, kitchen facilities, and other furniture.

J-Students Slated To Receive Grants

Four major scholarships will be awarded to journalism students this spring. Applications for the awards must be submitted by Monday.

Scholarship winners will be announced at the annual journalism banquet, April 29.

Scholarships available are: Wichita Press Women's Club, \$100; and the Henry Lawrence Photo Journalism Scholarship, \$150.

Awards of \$150 are made to the editor-in-chief and managing editor of the Sunflower, and editor-in-chief and business manager of the Parnassus.

YOUR INSURANCE MAN OUGHT TO BE SCHOTT--(Henry)
INSURANCE OF EVERY KIND
Caldwell-Murdock Bld. HO 4-3523

EASY PAY

ROYAL

QUIET DE LUXE

NO MONEY DOWN

Payments \$1.49 Per Week

1 Year Free Service

TRADE-INS ACCEPTED

WESTERN TYPEWRITER COMPANY

2324 E. Douglas AM 2-2465
Across Douglas From East High

No prettier shoes for the college coed...at any price!

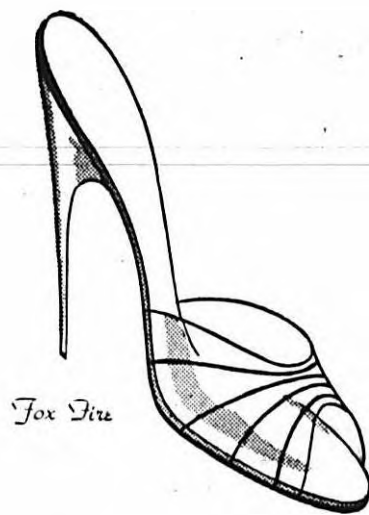
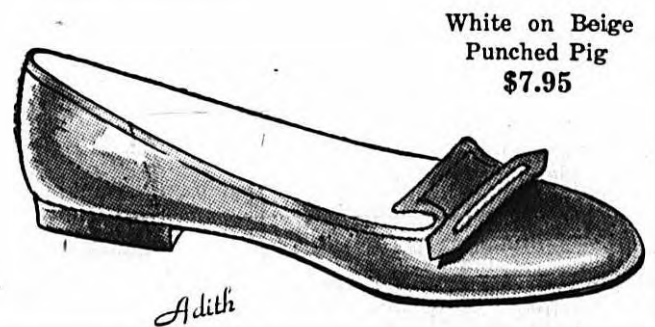
Sizes 4 to 10
Widths AAAA to B
\$7.95 to \$12.95

Four Ways to "Charge it."

Accent! SHOES

CHOICE OF THE "ANGELS"

...keyed to Modern Living



duane's

The House of Beautiful Shoes

110 East Douglas

Dial HO 4-7125

Baseballmen Lose 2, Take Phillips, E-State

The baseballers of Coach Ray Morrison have played five games during the last six days, winning three and losing two. The Shockers won from Phillips University, and swept a double-header from Emporia State. They lost games against Alva, Oklahoma, and Phillips.

Last Saturday the Rangers of Northwest Teacher's College of Alva, handed the Shocks a 7-2 defeat. Nick Dawson started for the Shockers and was relieved in the fourth by Bud Johnson. In the sixth, Bruce Woods, who pitched shut out ball for the remaining three innings, replaced Johnson.

The Shockers took on Phillips University in a double header, Monday. They traded games as Morrison's men captured the first game behind the fine pitching of big Al Schwartzkopf. This victory gives Schwartzkopf a 2-0 record for the season.

Two Runs Scored

In the second game, Jerry Wilson suffered defeat for the Shockers as Phillips pushed across two runs to win 2-0.

Tuesday, the Shockers swept both ends of their double header against Emporia State. Vern Orandroff pitched two-hit ball in the first game as the Shocks won 1-0. Neither ball club scored till the seventh inning, when Wichita pushed one run around the bases. Ray Fulton led off with a double and was knocked home by Jim Klisanin's single.

To Meet Friends

In the second game, the Shocks jumped off to an early two run lead in the first inning to give pitcher Bud Johnson a comfortable lead to work with.

The Shockers added four more runs later in the game and allowed only one run to Emporia State. The final score was 6-1 with the Wheatshockers on the big end of the score.

The Shockers will host Friends University today in a single game to be played at West Side Athletic Field. The game will start at 2 p.m.

Rep. Judd

(Continued from Page 1)

ation with allied powers. He is a graduate of the University of Minnesota and the Mayo Foundation and holds the literature and law degree from the University of Miami.

Dr. Judd's last appearance in Wichita was on Thanksgiving Day when he spoke at the University Fieldhouse. He was sponsored by the Wichita Beacon as a public service speaker.

OU Downs WU Golfers

The Shocker golfers suffered their fourth defeat of the season last Saturday as the Oklahoma Sooners soundly out-classed the Shockers and won by the score of 16½ to 1½.

The match was played at Wichita on the Wichita Country Club course. The Linkmen will travel to Manhattan today to take on the K-State Wildcats. They will return home to play host to the Kansas University Jayhawkers tomorrow.

Scoring OU 16½ WU 1½
Richardson OU 78 def Mann 82
Gorgas OU 79 def Van Dusen 84
Moore OU 78 def Bowlin 87
Dixon OU 81 def Witherspoon 90
Richardson-Gorgas def Mann-Van Dusen 2½-½
Moore-Dixon def Bowlin-Witherspoon

Runners Drop E-State Meet; Score, 74-59

Fritz Snodgrass' trackmen went down to defeat at the hands of the Emporia State Hornets last Wednesday in a dual meet at Emporia. The score was Emporia 74, Wichita 57.

The thinclads captured five out of twelve events. Don Jordan and Jerry Reiserer took first in two events, while Raymond Hampton won the two mile race.

Jordan's victories came in the 440 and the low hurdles and Reiserer's were in the high hurdles and javelin.

The Shocker yearlings won the freshman quarter mile event capturing the first three places. They also won the freshman mile relay. However these events did not enter into the scoring department for the varsity.

The Shockers will return to Emporia to take part in the Emporia Relays which will be held tomorrow.

Tennis Team Tops E-State In First Win

The University Tennis team captured its first victory of the season defeating Emporia State, 5-2, last Saturday.

The netmen won four out of five single matches and split in the doubles as Wichita and Emporia each won one match. This gives the Shockers a 1-3 record for the season.

The netmen will take on Emporia State this afternoon on the campus courts. Tomorrow, they will tangle with Fort Hays State Teachers College, here.

Scoring Wichita 5 Emporia State 2
David Circle (E) defeated Jack Hewitt (WU) 8-6, 9-7
Phil Gearheart (WU) defeated Bob Wyngard (E) 4-6, 6-4, 6-4
Stan Allen (WU) defeated Ron Romano (E) 2-6, 7-5, 7-5
Marlon Shropshire (WU) defeated Bill Elrod (E) 6-4, 6-2
Dick Fitzgerald (WU) defeated Tom Bentle (E) 6-4, 4-6, 6-1
Doubles
Gearheart - Shropshire defeated Circle-Wyngard 6-4, 6-4
Telegraber - Elrod defeated Fitzgerald-Allen 4-6, 7-5, 6-2

PATRONIZE YOUR ADVERTISERS

Nationalization Looms (Continued from Page 1)

students. New Maturity Seen Mike Kelly, Alpha Gamma Gamma, "Nationalization will enable the fraternities to work closer together and in harmony with the Administration. This new maturity will help the University to expand and add to its prestige."

Joyce Garfield, Pi Kappa Phi "Personally, I believe nationalization will benefit the University. Although the initial cost might be rather high, I believe it will be well worth it. Also, we will need to solve the problem of houses so that our members can "live-in" we go national."

More Fraternal Spirit Hal Rhodes, Pi Alpha Pi, "I believe nationalization will make fraternal spirit more meaningful on our campus, and I am all for anything which will increase student participation in University activities."

Phillis Brown, Alpha Tau Sigma "The University has needed nationals for a long time. We can not retain those students who transfer to another college for this reason."

- Typewriters
- Duplicators
- Adding Machines

Chester Typewriter Service
255 N. Main HO 4-2601

If YOU care enough to look YOUR



very BEST — think of Wichita's Distinctive Dry Cleaners...

Who rates what for performance and smoother riding in the low-priced three? Chevrolet has laid the answer and the proof on the line!

First, Chevrolet won the Auto Decathlon over every car in its field, and over the higher priced cars that were tested, too. This rugged ten-way test (right, below) showed Chevrolet was the champ in handling ease, braking, acceleration, passing ability, smooth-

ness of ride and other driving qualities you want in a car.

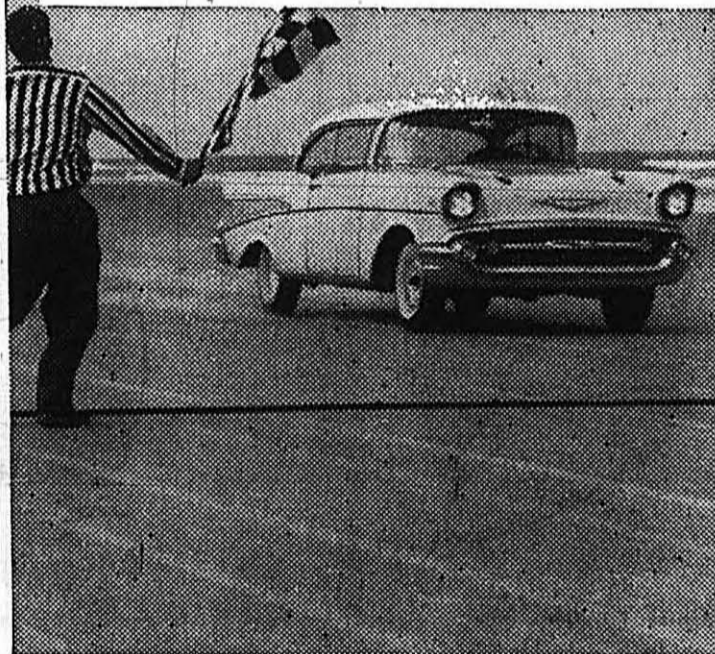
Then, Chevy won the Pure Oil Performance Trophy at Daytona (left, below) as "best performing U. S. automobile."

It's quite a feeling to know that you are driving a car that performs so well, responds so beautifully and is so finely built. You feel proud, of course. But you also enjoy a surer, smoother, steadier way of going, a keen

cat-quick response of power, and the easiest handling you've ever experienced behind a wheel. Just try this Chevrolet (V8 or Six) and see!



Chevy showed it's still the champ... at Daytona... and in the Decathlon!

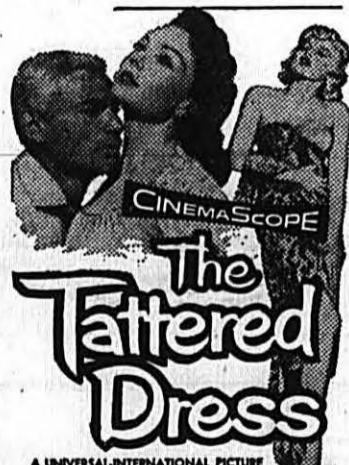


ENTER CHEVROLET'S \$275,000 "LUCKY TRAVELER" CONTEST!

Come in now—get a winning deal on the champion! Only franchised Chevrolet dealers display this famous trademark

See Your Authorized Chevrolet Dealer

NOW SHOWING



JEFF CHANDLER
JEANNE CRAIN
JACK CARSON

PALACE E. DOUGLAS
100 BROADWAY
"Home of TOP HITS"

A Sullivan Independent Theatre