

# ROTC To Present Candidates

# THE SUNFLOWER

**Cadets To View  
6 Women Vieing  
For Honor Title**

Official Student Newspaper

Volume XLVI, No. 12

University of Wichita—Wichita, Kansas

December 7, 1950

## Shockers Sweep Iowa Debate Meet

### U of W Wins Over Top Clubs

**Hobson, Stollenwerck,  
Rymph Rate Superior**

Competing with some of the top teams in the country last week, University debaters came away from the University of Iowa Inter-collegiate Conference on World Problems with first place ranking in debate and high qualitative ratings of individual entrants.

Held at Iowa City Dec. 1 and 2, the conference included representatives from twenty leading colleges and universities, Phillip J. Mohr, assistant professor of speech and debate coach said.

Each participating school was entered in eight debates. Top four schools in debate were: University of Wichita, 8-0; Northwestern, 7-1; University of Oklahoma, 6-2; and University of South Dakota, 6-2.

In addition to ranking of teams, Mohr said, speakers were judged according to their individual merit. Harry Hobson, Bob Stollenwerck, and Merton Rymph received ratings of superior and Russell Watson was ranked as excellent.

Debaters spoke on the subject, "Resolved: that the non-Communist nations should form a new international organization." Teams from the University were: Bob Stollenwerck and Harry Hobson, affirmative; Russell Watson and Merton Rymph, negative. Don Williams, associate profes-

(Continued on Page 3)

### Operas Feature Comedy, Drama

A cast of more than 30 will present two short operas, "Cavalleria Rusticana" and "Gianni Schicchi" in double feature programs Dec. 14, 15, and 16 at 8:30 p. m. in the University Auditorium. The operas will be sung in English.

"Gianni Schicchi," a comedy taking place in the city of Florence, Italy in the thirteenth century, shows the attempts of the Donati family in trying to get the property of an uncle who has died. Ohm Pauli plays the title role of "Gianni Schicchi" in the opera.

"Cavalleria Rusticana," a melodrama of illicit love, intrigue, and revenge, has a setting in a Sicilian village in the nineteenth century. The cast includes Darlene Reece, as Santuzza, a beautiful peasant girl; William P. Sandlin, as Turiddu, a young soldier; and Eldon Moen, as Alfio, a village teamster.

### Two Safety Contests End; Theme Contest Continues

With competition officially closed in two of the campus safety contests, students still have three days in which to submit entries in the safety theme contest.

Tickets to the Parnassus Dance and the Military Ball will be awarded to the author of the best 250-500 word theme on the subject of safe driving in the English theme competition.

Final date for submission of material is Dec. 11. Themes may be submitted to Prof. Robert Mood, head of the English department and Joan O'Bryant, English instructor, in their offices.

Recorded speeches by students will be judged by Dr. Forest L. Whan, head of the department of speech, radio, and drama; and Assistant Prof. Phillip J. Mohr, Associate Prof. Leslie M. Blake, and Associate Prof. Don Williams, all of the speech department.

All students in Speech 112 and 225 entered competition. From

**WESTERN UNION** (57)

W. P. MARSHALL, PRESIDENT

**CLASS OF SERVICE**

This is a full-rate Telegram or Cablegram unless the deferred character is indicated by a suitable symbol above or preceding the address.

**SYMBOLS**

DL = Day Letter

NL = Night Letter

LC = Deferred Cable

NLT = Cable Night Letter

Ship Radiogram

The filing time shown in the date line on telegrams and day letters is STANDARD TIME at point of origin. Time of receipt is STANDARD TIME at point of destination.

KC116  
1950 NOV 20 PM 12 00  
K.TKA201 PD=TOPEKA KANS 20 1146A=

UNIVERSITY OF WICHITA WICHITA KANS=

MAY I CONGRATULATE YOU ON THE CAMPAIGN THAT YOU ARE  
CARRYING ON IN BEHALF OF OUR SAFETY PROGRAM  
SAFETY IS A CONTINUING EVERYDAY PROBLEM THAT CONCERNS AND  
AFFECTS EVERYONE  
BEST WISHES FOR CONTINUED SUCCESS IN YOUR ENDEAVOR=

FRANK CARLSON GOV=

THE COMPANY WILL APPRECIATE SUGGESTIONS FROM ITS PATRONS CONCERNING ITS SERVICE

FORMER GOVERNOR Frank Carlson took time out from his administrative duties recently to send this message to University students. Since then, Carlson has been given the oath of office and is now a United States senator from Kansas.

### Student Wins A Silver Star Safety Award

Safe and courteous driving does pay dividends as evidenced by the presentation of Silver Star awards by Radio Station KFH and the Wichita Police Department to a University faculty member and a student in the past week.

Recipients of the awards were Lt. Col. Robin G. Montgomery, professor of military science and tactics, and Bobby Burgin, 19, 1317 Indiana. The award consists of a silver star mounted on the back license plate and a card of commendation signed by George Shepherd, chief of the Wichita police, and Frank Webb, gneral manager of KFH. In addition, Bob Arthur, KFH newscaster, gives the recipient special recognition on his 10 p.m. newscast.

Winners of the award are chosen when a patrolman spots a driver who, in his opinion, displays safe and courteous driving. The names of the drivers selected are then submitted to a jury of three police officers who pick the final winner.

These awards take on added significance since the University is conducting a safe driving campaign sponsored by the Sunflower and sanctioned by the Student Council.

### Shockers Meet Utags Tonight

#### Freshman To Battle In Preliminary Game

The University Shockers will play their second basketball game of the season tonight when they meet Utah State in the Forum.

The Utag are an old foe, but the two teams haven't met since 1938 when Utah beat the Shockers 43-49. Utah dropped a football opener here to Wichita in September, so the Utag cagers will have that score to even tonight.

Utah State placed fourth in the Skyline Conference last year, winning 18 games and dropping 16. Six lettermen will return for the Utags this season.

Ken Gunning, head Shocker cage mentor, has stressed conditioning in three-hour daily drills for the last two months to find the best personnel for the cage positions.

Shockers who will probably take to the floor in tonight's contest are: center Rex McMurray, Galva; forwards John Friedersdorf, Franklin, Ind., and Cot Friesen, Inman; Hank Hemmingway, Shelbyville, Ind., and Bill Tibbetts of Lawrenceburg, Ind., will fill the guard positions. Hemmingway, Friesen, McMurray and Friedersdorf are returning lettermen. Tibbetts, who has been the top scorer in pre-season scrimmage sessions, is a bright light on the Shocker squad. He fills a spot formerly occupied by Capt. Don Toevs who was graduated from the University last spring. Gunning has expressed confidence that Tibbetts will develop into all that's needed at the position.

Hemmingway will play the post spot on offense, while McMurray will play the forward spot on defense. (Continued on Page 8)

### High School Pupil "Teaches" Here

A casual visitor to the German conversation class might have been puzzled Tuesday. Instead of Mrs. Edith Bestard, instructor, sitting behind the desk, she was among the students taking lessons from a 17-year-old boy.

Bodo Eberstein, German exchange student attending East High, was the leader of the discussion held in his native tongue. He answered questions of his home, Schweinfurt, Germany, asked by the interested students.

After the 8 a. m. class, Eberstein, instructor at the University of Wichita, returned to East High to become Eberstein, high school senior.

### ROTC Members To Donate Blood

Members of the Reserve Officers Training Corps at the University will take time out from their classes Monday to contribute blood to the American Red Cross blood bank.

The ROTC donors have "jumped the gun" on the University-wide blood drive which will be held a week later on Dec. 18-19. At this time all students will be urged to contribute blood. Donor pledge cards are now being distributed by student organizations.

A Red Cross official said in an interview Tuesday that approximately 150 student cadets will contribute a pint of blood each.

Blood is being shipped daily from the Wichita regional blood center to Oakland, Calif., for shipment to Honolulu and Korea.

### Aeronautic Scholarship Grant Living Tribute To W. H. Beech

The Walter H. Beech Scholarship in Aeronautical Engineering was a year old last Thursday. Everything was set to observe the first anniversary of that initial \$8,000 grant with the announcement that Walter Beech, president of the Beech Aircraft Corporation, had extended a second \$4,000 personal gift to further perpetuate the scholarship.

#### To Be Remembered



WALTER BEECH

Announcement of the additional \$4,000 grant went off as scheduled in both press and radio. However, it came both as a tribute and post script to the death announcement of the scholarship donor, Walter H. Beech had died of a heart attack at 11:45 p. m., on Wednesday, Nov. 29.

Funeral services for the founder of the aircraft company were held Saturday at the First Methodist Church. Dr. Thomas A. Williams officiated and burial was in the Old Mission mausoleum.

Saddened by the news of Beech, President Harry F. Corbin said: "He was a great Wichitan. We are all very proud of the contributions he made to the city and to the aircraft industry. Here at the University we know how deeply he loved aviation and we have, in the Beech scholarships, ample proof that he wanted sincerely to give young people an opportunity to develop their talents and take their places in the field of endeavor he served so well."

To Mrs. Beech, President Corbin said: (Continued on Page 3)

#### Inside Index

- Riveron's Art See Page 3
- William's Rebuttal See Letter, Page 4
- Christmas Dances See Page 2

# Round about the Campus

By Mary Fran Sullivan

Members of Epsilon Kappa Rho will entertain at Veterans Hospital Tuesday evening in a musical program. Colleen Kelly is in charge of the skit, called "Kappa Rho Capers."

Several members of the football squad and their wives seen at Ken's Klub Saturday after the game included the Ray Zumalits, the Bob Harclerodes, the Wayne Ubbens, and the Aggie Oleksaks. The party, including other team members and their dates, marked the end of football season.

**PLEDGES** of Phi Upsilon Sigma will honor their actives at a stag party Friday evening. Another party was held by the fraternity last night, with invitations being issued on burnt edged paper. The theme of the affair was all very mysterious, with only "party members" in on the know.

Eldon Moen's artistic beard is not, as some think, a remnant of Homecoming activities, but a necessary evil for the coming opera. Eldon plays the part of Alfio, and needs the beard for character portrayal.

**SPEAKING** of the opera, little Cathy Decker is a cast member for the fifth time in a University opera. She is the nine year old daughter of Harold Decker, opera orchestra director.

Pi Alpha pledges entertained their actives at a stag Friday evening. The annual Gamma-Webster stag is scheduled for Dec. 16. The Gammas will host the affair, as does the losing team each year after the yearly football game.

**THE** annual round of Christmas dances will begin this weekend, when Men of Webster entertain Saturday night at their formal dance. A holiday theme

## Men of Webster Fraternity Plans Holiday Dance Dec. 9

Men of Webster will begin the holiday festivities with their annual Christmas formal dance in the Broadway Roof Garden, Saturday, from 9 p. m. to midnight. Johnny Friesen's orchestra will furnish the music.

Christmas carols will be sung by the Webster Quartette. Members include Jerry Hershey, Kendall King, Don Elliot and Jim Taylor.

Guests at the dance will include Mrs. Elsie Lewis, Dr. and Mrs. T. Reese Marsh, and Dean Grace Wilkie.

Websters and their dates will be: Ralph Crosby, Lynda Potts; Mike Miller, Marilyn Bills; John Dahler, Pat Hall; Jim Clay, Jewel McEnulty; Jack Lamkin, Pat Weaver; J. D. Edmiston, Dorothy Richardson; Bob Trissal, Beth Shearer; Bob Eixler, Sally Albright; Leland Klein, Lorene Van Livene; Ed Lomax, Bette Dana; Jerry Finney, Ricta Trimbuel; Keg Harrell, Vona McCannon; Ted Albright, Patsy Carter; W. S. Henrion, Barbara Hunter; Jim Mison, Carolyn Stutsman; Mel Smith, Sharon McDow; Bob Elie, Margaret Jo Harris; Ron Gott, Wanda Strangeon; Bob Thomas, Vetta Stewart; Randy Barron, Marge Richardson; Sam Saddler, Donna Zogelman; George Davis, Maureen Heaton.

Dan Smith, Abbie Troup; Dick Coleman, Joan Shaw; Bob Lewis, Marsha McKay; Bill Kloubacher, Mary Myrth Weatherwax; Bill Harrin, Barbara Logan; Frank Miller, Nancy Rittensauer; Bob Goodwin, Marjorie Beck; John Tambella, Maryann Reed; Jack French, Betty Craig; Jack Piper, Shirley Cramer; Herb Wathan, Connie Weckel; Melvin Love, Peggy Rorabaugh; Fred Young, Dee Gist; Bill Hawes, Carolyn Coburn; Dick Nordstrum, Mary Jane Comstock; Larry Austin, Velda Burdorf; Clyde Krug, Edna Neal; Jim Osmont, Jerry Beardley; Dale Cooper, Collette Porter.

Ed Kriwiel, Mary Fran Sullivan; Ken Shabeen, Beverly VanZant; John Walker, Della Bates; Darrel Basom, Arlyne Drake; Larry Schwenk, Lucy Smeeler; Don Brinton, Carol Hill; John Swanson, Mary Hunter; Bub Ray, Pat Linot; Ted Theodosoff.

will prevail, and Santa Claus will be represented by John Tambella. Ralph Crosby will be his "little helper."

Thursday evening the second game in the University 1950 basketball season will be played in the Forum. Our opponent is Utah State. Be there, and let the team know we're behind them!

## Club Corner

### Revenue Agent Plans Talk For Accounting Club

**Accounting Club**  
"Tax Headaches After March," will be the topic of Elbert L. Beard, Jr., chief office deputy, Office of Collector of Internal Revenue in Wichita, for members of the Accounting Club at 7:30 p.m., Tuesday in Room 201, Library.

**Kappa Pi**  
Kappa Pi will hold its annual Christmas dinner Dec. 14. The fraternity will not meet tonight because of the basketball game.

**Kappa Delta Pi**  
Miss Helen Pelzel, principal of Fairmount School, will lead a panel of grade school students in discussing "What Constitutes A Good Teacher and A Good School" at 6:15 p.m. Thursday in Room 230, Administration Building, before members of Kappa Delta Pi.

**Sigma Xi**  
Sigma Xi will meet at 4 p.m. Wednesday in Room 306, Science Building, to hear Dr. Charles R. Townes of the Columbia Radiation Laboratory of New York, speak on "Spectroscopy in the Micro-Wave Region."

**Geology Club**  
Any student interested in geology is invited to attend the meeting of the Geology Club at 7:30 tonight in Room 207, Science Building. Dr. J. R. Berg, professor of Geology, will discuss "Drilling in Brazil."

**Modern Dance Club**  
A short business meeting will precede the workshop of the Modern Dance Club at 3 p.m. Wednesday in the Women's Gym.

**Sociology Club**  
A panel discussion on the topic, "Wichita Churches Review Their Race Relation," will be the main event of the Sociology Club meeting at 7:30 p.m. Wednesday in Room 427, Administration Building. Carl Ortmeier, instructor in sociology, will be moderator.

### Meeting Scheduled By Webster Moms

The Men of Webster Mother's Club will meet this afternoon at 2 p.m. in the home of Mrs. Henry Gott, 3925 Pine Knot Court.

Dale Cooper, a Webster who toured Europe last summer will be the guest speaker.

Miss Hutton was graduated from East High School and attended the University where she was affiliated with Alpha Tau Sigma sorority. Her fiancé, also a graduate of East High School, is attending the University of Wichita.

## Students Plan Holiday Nuptials

Four students and two former students of the University have announced their engagements. The weddings will take place in December.

Miss Elizabeth Louise Cadman's approaching marriage to George William Bruce, son of Mrs. Richard E. Bird, Jr., and George H. Bruce, is announced by her parents, Mr. and Mrs. Wilson Kennedy Cadman. The wedding will be an event of Jan. 28, at 4 p.m., in the Plymouth Congregational Church. A graduate of East High School, the bride-elect will be graduated from the University of Wichita in January. At present she is president of Sorosis sorority and a member of Kappa Delta Pi, honorary education fraternity. Her fiancé was graduated from Missouri Military Academy, Mexico, Mo., and now is a senior at the University of Wichita where he is affiliated with Men of Webster.

The engagement of Miss Ann Elizabeth Dunham, daughter of Mr. and Mrs. Berry C. Dunham, to Johnny W. Hurst, son of Mr. and Mrs. E. A. Hurst is announced by the bride-elect's parents. The wedding will take place on Dec. 26, at 8 p.m., at Grace Presbyterian Church. Miss Dunham attended Jordan High School in Long Beach, Cal., and was graduated from Ward Belmont College in Nashville, Tenn. She is now attending the University of Wichita, where she is a member of Sorosis sorority. Mr. Hurst attended East High School and University of Wichita, where he was a member of Webster fraternity. He is a professional baseball player.

Mr. and Mrs. G. E. Hutton announce the engagement of their daughter, Lois Jean, to Eugene Paul Brane, son of Mr. and Mrs. J. E. Brane. The wedding will take place in Plymouth Congregational Church at 8 p.m., Dec. 29.

## Sororities Plan Holiday Parties

Red and white candy canes, popcorn balls, and brightly-colored packages will be featured at the annual Christmas parties being planned by University sororities this month.

Alpha Tau Sigma sorority is planning its annual party Dec. 18. There will be an exchange of gifts between the pledge mothers and daughters. Previously, the actives have exchanged inexpensive gifts, according to Marilyn Manninger, who is in charge of the party, but the money for these gifts is being given to a needy family this year.

Beverly Bennett is in charge of the Delta Omega party to be held Dec. 18. After the gift exchange and refreshments, the sorority will sing Christmas carols at the house.

Epsilon Kappa Rho's party is planned for Dec. 18. Margaret Reinhardt is in charge of the refreshments and the program. The pledge mothers and daughters will exchange gifts.

Dec. 18 is the date set for the Pi Kappa Psi annual Christmas party. The pledges are in charge of the party. There will be an exchange of presents between pledge mothers and daughters and refreshments will be served.

Marilyn Smith is in charge of the Sorosis Christmas party. There will be gift exchange between pledge mothers and daughters, and refreshments will be served. Following the refreshments, the sorority will go Christmas caroling.

## ISA Yule Dance To Be Dec. 15

"Mistletoe Mood" is the theme of the Independent Students Association's annual Christmas formal, Dec. 15, from 9 p. m. until midnight in the ballroom of the Shirkmere Hotel.

Barbara Matthews is chairman of the dance committee and Goodie Goodman's orchestra will play.

The presidents of all sororities and fraternities and their dates have been invited. These are: Larry Lallement, Alpha Gamma Gamma; J. W. Johnson, Jr., Alpha Phi Alpha; Suzanne Gray, Alpha Tau Sigma; Earlene McBride, Delta Omega; Phyllis McFadden, Epsilon Kappa Rho; George Davis, Men of Webster; Dick Haughton, Phi Upsilon Sigma; Hugh Livingston, Pi Alpha Pi; Betty Cadman, Sorosis; Norma Jean Haley, Pi Kappa Psi.

Other guests include, Pres. and Mrs. Harry Corbin, Dean and Mrs. L. Hekhuis, Dean Grace Wilkie, Dean and Mrs. Jackson Powell, Dean and Mrs. Kenneth Razak, Dean and Mrs. Thurlow Lieurance, Dr. and Mrs. Eugene Saviano, Prof. and Mrs. H. A. Shumway, Prof. and Mrs. Robert Ryan, Prof. and Mrs. William Tuxbury, and Dr. and Mrs. John Snell.

**ties**  
designed by salvador



Neckwear created with the masterful artistry of one of the world's most eminent surrealists! Never before has an artist of Salvador Dali's prominence attached his name to men's ties at such a "realistic" price. All acetate yarns in palette shades of maroon, brown, blue, grey or green. only \$1.50

**Buck's**  
WICHITA

Menswear—Buck's  
Street Floor

Best Place To Buy Anything Musical

**GIVE MUSIC**  
206 E. Douglas  
**Bennett's**  
40 Years



wonderful, woody **Woodhue**  
**Faberge's** fragrance  
for falling in love  
featured in "THREE HUSBANDS"  
a United Artists comedy

**Geo. Jones co.**



**Harvey**  
BROS.



Even when the occasion calls for full dress, you just can't blame a guy for not wanting to cover up his new Harvey Brothers shirt with a cool! Man, if you want a shirt that DOES things for you, just have a quick gander at the collection Harvey Brothers are sporting

**HARVEY BROTHERS**  
122 East Douglas

Says Mr. Music

Expressionistic Style . . .

Enrique Riveron Art Exhibit Displayed In Morrison Hall Gallery

By Dorothy Ludiker

"Every artist should belong to his time and should have the freedom to think and paint in the way he believes and sees fit."

This was a statement made by Enrique Riveron, local cartoonist and painter whose art exhibit is now on display at the Morrison Art Gallery.

Mr. Riveron's interest in painting is in forms, color, and the purest of organization.

The oil paintings by Mr. Riveron are mostly non-objective. They do not represent a specific object. When he does use a specific object, he uses his own expressionistic style and paints them not as everyone sees them, but as he feels them himself.

From the psychologist's point of view, Dr. N. H. Pronko says, "This free art by Riveron only flourishes in a democracy it goes well with democracy. In dictator-ruled countries there is not such freedom of painting. This is art in which the artist has possibilities, that is, he can paint however it suits him to paint."

David Bernard, assistant professor of art, said, "He is a vital and dynamic artist. With his Latin American and cosmopolitan background, he brings a wealth of broad experience to the expression of his art form. I feel that this exhibition is an unusual opportunity for art students and University people to see first hand the art of a leading local artist."

Robert M. Kiskadden, assistant professor of art said, "This fine exhibit is representative of world wide conception of painting rather than just mid-west conception."

Mr. Riveron has been a resident of Wichita since 1942. Previously he was a political caricaturist for the newspapers of Havana, Cuba, his native country. He has traveled and studied extensively in Spain, France, Belgium, and Italy. Later he traveled to Argentine, Chile, and Brazil, where he contributed to magazines and newspapers of those countries.

The art exhibit will be on display on weekdays until Dec. 18, from 8 a.m. until 5 p.m. It will be open Sunday Dec. 10, from 2 until 5 p. m.

November 27, 1950

University of Wichita  
Wichita 14, Kansas

Dear Editor:

We are happy to know your publication is doing something constructive to protect your students on the highway.

Young folks are prone to forget precautions in the height of their exuberance. Most of them are pretty good automobile drivers - they are mechanically inclined and know what makes an automobile tick, and they have sharp reactions.

However, the rate of accidents among young folks is so high many insurance companies will not cover them. This proves if they will "stop, look and listen", many a heartbreak will be precluded.

Sincerely,  
*Bing Crosby*  
Bing Crosby

SINGER, COMEDIAN, movie star, radio artist, race horse owner, and businessman Bing Crosby took cognizance of the national safety problem this week by sending a message to the students of this University asking for their participation in the annual campus safety drive.

Beech

(Continued from Page 1)

bin said: "He has demonstrated great courage, he has exercised an abundance of individual initiative and, within my own experience, he has proved himself a friend of young people."

The first two Beech scholarships were awarded last spring. Now studying under the grants in the School of Engineering are Warren Yarnell, East High graduate, and James Tanner of Russell High School.

Both students expressed sorrow when they learned of the death of Beech. Tanner said: "I won't forget him—he gave me a real break with his scholarship. I might not have gone on to college, if it weren't for him."

The Beech scholarships are awarded annually to two Kansas high school seniors on the basis of competitive examinations conducted in the spring. They are four-year scholarships good for \$1,600-\$400 per year.

Beech, 59 years old, founded the company in 1932. Since that time, the company has built more than eight thousand twin-engine commercial and military planes, and more than four thousand single engine aircraft. During World War II the plants produced a grand total of 7,400 Beechcrafts.

Mr. Beech was born Jan. 30, 1891, on a farm near Pulaski, Tenn. When the United States entered the first World War, he enlisted in the U. S. Army air corps and was assigned to Kelly Field at San Antonio, Tex., as a motor expert and pilot.

He came to Wichita in 1922 and became associated with Swallow Aircraft Company. Placed in charge of sales for the Swallow Company, he decided the best way to sell planes was to demon-

14 Phi Beta's Attend Meet

Fourteen University faculty members of Phi Beta Kappa, national scholastic honorary fraternity, met at their annual informal luncheon Tuesday in the Faculty Room of the Commons.

Phi Beta Kappa is the oldest Greek letter organization in existence. It was organized 174 years ago, according to Miss Margaret Walker, instructor of English.

strate what they could do. He entered contests and air meets in all parts of the country and always brought back a major share of the awards.

Mr. Beech entered the airplane manufacturing business on his own in January, 1925, when he formed the Travel Air Company. Production at the Beech plant speeded up to such an extent, that in 1928 Wichita led the nation in the manufacture of aircraft with a total production of 927 planes of which his company made approximately six hundred.

Surviving Mr. Beech are his wife, Mrs. Olive Ann Beech, secretary-treasurer and a member of the board of directors of Beech corporation; two daughters, Suzanne Mellor Beech and Mary

Lynn Beech, all at the home; two sisters, Maude Beech and Connie Beech, Wichita; two brothers, Richard K., Fort Worth, and Leslie I. Beech, Orlando, Fla.

Classified

TYPING - Professional typist. Special rates to students. Call Opal Wallis, 62-1201.

ENCYCLOPEDIA AMERICANA - 14 original vol. Includes deluxe Funk & Wagnall's dictionaries. Good condition. 48 editions. Mrs. Whiteside, 5-8082.

BOOKS - Complete sets of many standard authors including history, fiction, short story, and science; many odd volumes in different fields. Mary Haymaker, 1810 N. Holyoke. Phone 6-0974 or contact in Room 215, Administration Building.

6-FOOT FRIGIDAIRE - Unit 6 years old. A-1 condition. 225 S. Glendale.

STUDENT TO BABY SIT from 7:30 a. m. to 8:30 a. m., six days a week. Call 62-0131.

ROOM, BOARD AND SMALL SALARY - Girl student wanted to take care of children. Little housework. Close to busline. 62-3390.

WORKING MOTHER NEEDS assistance with children afternoons. Close to school. Call any morning at 62-7941.

TUXEDO FOR SALE - Between size 38 and 38 regular. Good condition. Reasonable. 5-4334.

GARAGE WANTED TO RENT - In vicinity of 17th and Fairmount. Call 62-6371.

GORDON PLATEN PRESS - Complete with printer's cabinet and type. Needs some repairing, but in good condition. Bargain. \$25. See in Dept. of Art.

Debate

(Continued from Page 1)

group of speech, accompanied the group.

Colleges and universities represented included: University of Iowa, University of Minnesota, University of Missouri, Marquette University, Notre Dame, Boston University, Denver University, and West Point Military Academy.

Also Northwestern, University of Illinois, University of Nebraska, Kansas State College, University of Michigan, University of Kansas, University of South Dakota, University of Oklahoma, and the University of Wichita.

Harry Hobson and Russell Watson entered the discussion competition, speaking on the subject, "Responsibility of the Federal Government for the welfare of the people of the United States." Hobson received a rating of excellent for his part in the discussion.

Merton Rymph was the only University entrant in extemporaneous speaking. One of the top five in his competition, he received a commendation of excellent.

Speakers were ranked in five classifications: below standard, fair, good, excellent, and superior, Mohr said.

"We consider it a great opportunity to meet with the large

schools of the Midwest at Iowa. Our greatest benefit comes from the training, experience and meeting of minds with other schools," Mohr said.

"Iowa is one of the best managed and most fruitful conferences on our agenda. Debate is the vocalization of information gleaned from all of the arts in the University. Without the contribution from all departments, debate could not be successful," he continued.

In the future, the University squad will attend the Invitational at the University of Nebraska, a meet at the University of Virginia, and the Missouri Valley Forensic League at the University of Oklahoma.

Blood Saves Lives


You can't transfuse a promise to donate blood but the actual blood may save a wounded man's life. Keep your appointment with the Red Cross blood center. Give lifesaving blood for our fighting men!

Got Stuck in a Chimney  
HAD TO RETIRE  
Call 62-8614,  
Santa for HIRE

RENT A CAR  
From  
BEN MILLAR  
124 North Emporia  
Phone 2-2481  
56 Years in Same Location

JACQUES' GIFTS  
Direct From China  
60c to \$5.00  
JACQUES  
1414 N. Hillside

LOOK YOUR BEST - ALWAYS!



You're Always Right In an Arrow White!

Oxford \$3.95 Broadcloth \$3.65

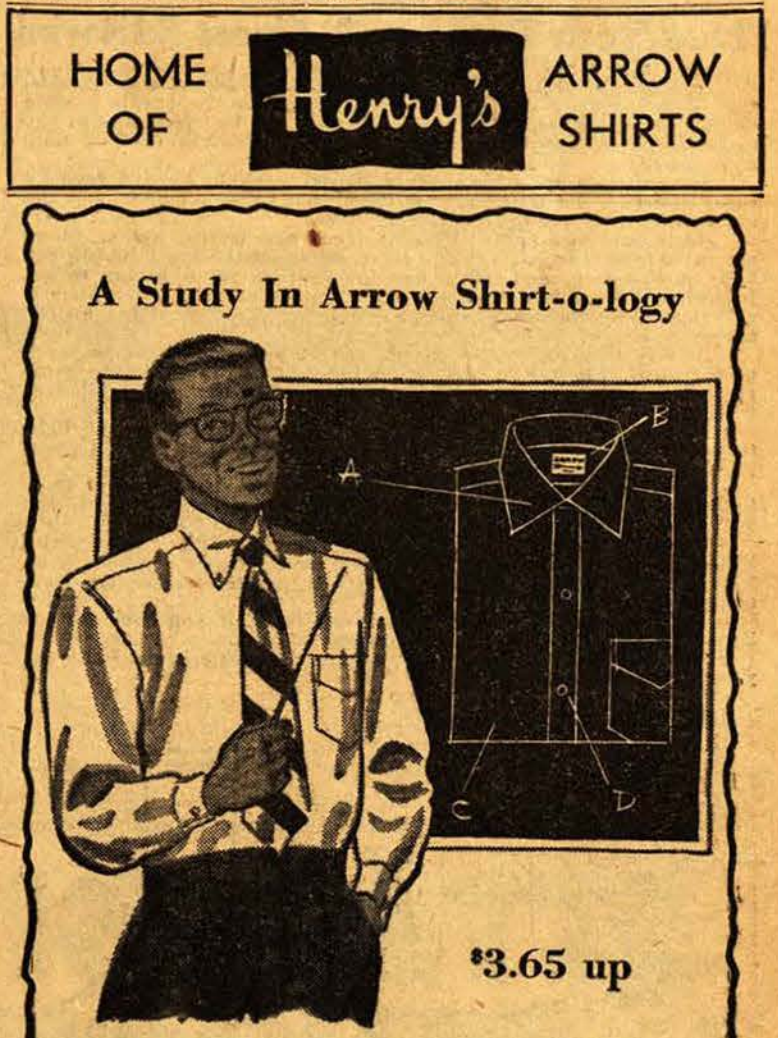
You'll always be dressed right in an Arrow white shirt . . . first choice with college men everywhere! Regular, button-down, and wide-spread collars. Sanforized-labeled, of course. Come in for yours today.

Geo. Innes Co.

FOR ARROW UNIVERSITY STYLES

HOME OF Henry's ARROW SHIRTS

A Study In Arrow Shirt-o-logy



\$3.65 up

- A Campus-favorite collar styles . . . made as only Arrow can make 'em.
- B Every shirt Sanforized-Labeled . . . less than 1% shrinkage! Long wearing fabrics.
- C Mitoga tailored . . . cut with easy tapering from shoulder to waist . . . no waistline bunching!
- D Extra durable buttons firmly anchored on.

ARROW SHIRTS & TIES  
UNDERWEAR • HANDKERCHIEFS • SPORTS SHIRTS

# The Sunflower

December 7, 1950

Volume XLVI, No. 12

Published each Thursday morning during the school year by students in the department of journalism of the University of Wichita, except on holidays, during vacations and examination periods. Entered as second class matter, September 24, 1916, at the postoffice at Wichita, Kansas, under the Act of March 2, 1879.

The Sunflower is one of the oldest student publications in the state of Kansas, having been founded in 1896.

Subscription by mail in the United States is \$2.00 per school year. Advertising rates furnished upon request. Address: The Sunflower, University of Wichita, Wichita, Kansas. Telephone 62-6521.

Represented by National Advertising Service, Inc., College Publishers Representation, 420 Madison Ave., New York, N. Y., Chicago, Boston, Los Angeles, San Francisco.

## Editorial Staff

Editor-in-Chief . . . . . M. Michael Miller  
Managing Editor . . . . . Jim Edwards  
Desk Editor . . . . . Jack Campbell  
Sports Editor . . . . . Bill Brooks  
Society Editor . . . . . Mary Fran Sullivan  
Photo Editor . . . . . Joe R. Ludiker

## Business and Advertising

Manager . . . . . Carl Goeller



Freedom goes where  
the Newspaper goes

'50

Affiliated With  
NATIONAL EDITORIAL ASS'N

KANSAS PRESS SERVICE, INC.  
National Advertising Representative  
701 Jackson — Topeka, Kansas

## Know Your Campus---Number 12

# School's Religious Council Promotes Brotherhood During Year

## Officers Of Religious Council

By Harold Enns

While the world is struggling under the conflict of opposing political systems and social groups, organizations designed to create an understanding between these groups are more urgently needed now than ever before. Such is the University Religious Council.

The Religious Council was organized 15 years ago on the campus by Dean L. Hekhuis, head of the College of Liberal Arts and Sciences. In a series of three meetings, representatives of the Catholic, Protestant, and Jewish faiths spoke on the subject, "What is not often understood about my religion." Interest in the meetings mounted from an attendance of 200 at the first speech to a crowd of 800 listening to the later discussions in the Science Building.

The purpose of the Religious Council is largely to provide an informational and discussion group for practical religion. Presently, the Council provides that two representatives from each of the three faiths, in addition to representatives from the individual Protestant denominations meet once a month for a "coffee session."

Just this week, the Council invited a representative of a labor union and an industrial relations expert to speak on the subject, "Labor and Management." Problems which arise between labor and management were discussed in a practical manner.

The by-product of the Religious Council's efforts is that students realize an understanding of each other's individual faith. This leads toward brotherhood, which is practiced throughout the year, not just during Brotherhood Week.

President Harry F. Corbin sponsored the Religious Council



THE RELIGIOUS COUNCIL serves a twofold purpose. It provides an information and discussion group, and it strives to establish a feeling of brotherhood regardless of religious beliefs. Standing are left to right: Jim Dorsett, vice president of the program committee, and Lee Burress, assistant professor in the department of religious education and philosophy, chairman of the organization. Seated are Margery Burns, secretary-treasurer, and Beverly Hammer, chairman of the Religious Council.

on the campus several years ago. This year, Lee Burress, assistant professor in the department of religious education and philosophy, is the chairman of the organization.

## A Holiday Clue . . .

Planning a holiday trip in your automobile?

Here's a clue, through an example, on how to save money, prevent an unforeseen accident, and save wear and tear on your car and nerves—all this by taking a little more time.

The example is drawn from the experiences of two drivers who participated in a road test on a 295 mile stretch of highway in Kansas.

Their performance figures, under typical driving conditions, present strong and logical evidence.

During the road test driver "A" reached a top speed of 65 miles an hour and averaged 46. He passed 126 automobiles.

The top speed of driver "B" was 50 miles an hour with an average of 43, passing only 62 automobiles.

It took the first driver 6 hours and 25 minutes to reach his destination, while the second driver made the trip in 6 hours and 50 minutes.

Twice as many cars were passed by the faster driver. He used 11 per cent more gasoline and 50 per cent more oil.

Altho he did reach his destination first, the fastest driver saved only 25 minutes.

It is apparent that the trip cost him more through gas and oil consumption, not to mention the fact that his chances of an accident while passing cars was doubled.

Remember this example when the speedometer hand reaches 50, then say out loud—"Is it worth it?" —J. E.

## Place Your Bets . . . A Guest Editorial

By Joe Ludiker

In Reno, Nevada, and on the Riviera it's fashionable to gamble. One of the favorite games is roulette. In roulette the people gamble on the colors as well as the numbers the little ball indicates in the roulette wheel. Many people have favorite colors they bet on time after time.

Some people who have never played roulette have a favorite color that they bet on time after time. That color is amber, and the stakes they play for are often their lives.

On many corners in Wichita there are traffic lights. There are three colors in each traffic light. Everyone knows that the red light means stop, and every one knows that green means to go. But some folks think the amber light means every one for himself and the devil take the hindmost. These people are gambling on the amber color.

In the morning traffic, people are in a hurry to get to work or to school. The people waiting for the green light are in the same rush to get to work as the people who are in the moving line of traffic.

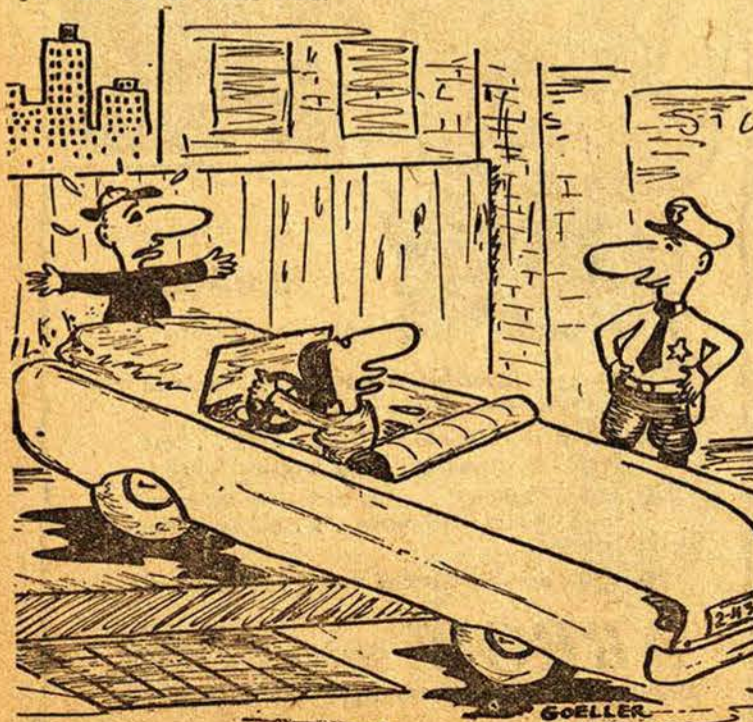
Instead of slowing down and coming to a stop, when the light turns amber, many people rush across the street in an effort to beat the red light.

The people in the waiting line are in a rush and when their light turns green they often roar across the street confident that the other drivers will obey the traffic light.

When two cars come together the gambling driver loses. Even if he is uninjured he is held responsible for the entire accident. If he kills the other driver he can be given a prison sentence for manslaughter.

The odds on this gambling are very small. If you beat the red light you win a few minutes. If you lose . . . ?

It isn't worth it. Don't make your life a roulette game. Don't bet your life on the amber color.



Officer arrest that man. He walked right in front of my car.

## Sound Off!

# Sunflower Gripes, Safety, Williams' Rebuttal Aired In Letters

Dear Editor:

Saw George again the other day. "Hello, George," I said. "Hi," said George. He set down his shovel. "Seen the Sunflower yet?"

"No. What did somebody say?" "Mary Helen Wall. Says you're verbose, one who obviously doesn't know, inferior, wants you to re-evaluate your position, and calls you a killer."

"My goodness, she used lots of words on me. You know Mary?"

"Yup," said George. "You going over to talk to her?"

"Not me. I don't belong to any fraternity here. Anyway, George, Mary's just what I've been waiting for."

"How's that?" "Did you read all the letters, George?"

"Yup. You sounded sarcastic, kinda like you wanted to pick a fight." George thought a minute. (George is not very bright, but sometimes he's a real deep thinker.) Finally he said, "You knew that somebody with a dictionary, a lot of statistics and a hot temper would jump down your throat. What are you up to?"

"Well, George," I said, "You're right. It's like this. Some folks run for a bar when they have a few free minutes. Others sit on the porch and whistle at the girls—the ones with the Old Look anyway. But me, I just like to fish."

"Fish?" "Sure. I just throw out some bait and wait to see what kind of a fish will bite."

"What kind do you catch?" asked George narrowly.

"Suckers. Every time George, every single . . . time I catch a sucker."

"You hooked a loud one this time."

"Suckers always make the most noise," I said. "That's why they're so much fun."

. . . George looked at me for a long time. "Fishin' again?" he asked softly.

"No, George," I protested. "But let's watch the Sunflower for awhile. We've got lots of bait."

Glenn E. Williams

Dear Editor:

This can be classified as a "gripe."

The last edition of the "Sunflower" tops all of the "sad editions" published by the school paper. Whether this fault falls directly on those writing the paper or on those printing it, someone doesn't know a galley of type from third-base.

First of all, the sports section

lacked three rather important stories that would have been of interest to all students. (1) Varsity basketball started Tuesday and last week's edition failed to print a single word (with the exception of the calendar) about it; (2) There was no story on the All Missouri Valley Football selections; and (3) there was no mention of the fur provoking football game put on by the Wheaties Pep Club.

Even if these articles had made it, the paper still would have been a "sight to make eyes sore." The grade of paper used in printing the "Sunflower" would not compare with a mail order catalogue. The print seems to be the left-overs of that used in printing "Lincoln's assassination," and the pictures might as well be cross-word puzzles for as clear as they are.

I have no idea who prints this paper, but it fails to be a credit to the University and certainly not a credit to the establishment that prints it.

Sincerely,  
Pat Quinn, Jr.  
158 S. Fountain

Dear Editor:

The corner of 17th and Fairmount is the spot where each morning at about 7:35, buses and cars congregate to bring a greater portion of the University students to their daily classes. This heavy traffic along with the students walking to the campus, makes this corner one of the most dangerous anywhere near the University.

The heaviest traffic is on 17th street, some turning south on Fairmount and the others turning north onto the campus. To add to all this confusion, buses stop on both sides of the street to let students make their exit. Then, of course, there is the traffic originating in the south on Fairmount.

The situation probably wouldn't be too bad if it weren't for the poor pedestrian on the south side of 17th street. I have watched students as they bravely attempt a crossing, but are thrown for a loss when the bumper-to-bumper traffic refuses to stop for them.

There must be some way to alleviate this congested condition. One traffic officer directing the cars, buses and pedestrians would remedy this hazardous condition.

When streets become icy this winter, the situation will be even more dangerous unless something is done.

I haven't mentioned the possible installation of a signal light because there are only certain

times during the day when there would really be a need for one.

I contend that one policeman should be instructed to control and direct the traffic on the corner of 17th and Fairmount during the rush hours. That shouldn't be too great a sacrifice when considering the fact that thousands of students' lives are endangered every day by not having some means of directing the heavy traffic.

Signed  
Harold Enns

## Word Is Coined To Show High Accident Rate

By Jim Edwards

"Teenicide," a new word in our language, now being recorded in dictionary's for history, was coined through the efforts of drivers under the age of 25—or should it be said through the "lack" of effort.

What does this word mean? How did it originate? What is its significance? These are questions one might ask about any word.

But this is not just any word because many of us are responsible for it and therefore should know its history.

Teenicide means death caused by an automobile driver under 20 years of age, usually the result of recklessness or immature judgment—a term used to denote the fact that persons under 20 years of age are involved in a disproportionately high number of fatalities in the United States.

It is recognized that habits formed in the teens are carried over into later years. Therefore, teen-age driving habits are also retained, and the word teenicide, by usage, logically includes the actions of drivers in the 15 to 24 age group, and probably more.

Originated by a casualty insurance company to describe the traffic deaths piling up each year among young drivers, teenicide is composed of the two words "teen-age" and "suicide."

The significance of teenicide—7,100 killed, 320,000 injured last year—may be considered a national catastrophe.

Many dictionary words have become obsolete and are no longer used. Through the efforts of the National Safety Council, driver education, law enforcement agencies, and the efforts of the teenicide age group, this new term may become obsolete.

**His Honor Speaks**  
**CITY OF WICHITA**  
 OFFICE OF THE MAYOR  
 CITY BUILDING  
 WICHITA 2, KANSAS



December 5, 1950

To the Students and Faculty Members of Wichita University:

I am asking you to take part in the nationwide Christmas safety campaign now being waged by the National Safety Council and 161 national cooperating organizations. The goal of the campaign is to reduce the traffic toll accidents that bring suffering and sorrow to so many homes at the Yuletide season. Traffic accidents reach their peak during the Christmas holiday period because of winter weather, earlier darkness and holiday festivity. Home accidents also increase. But if we all assume personal responsibility for a safe celebration for ourselves and others, whether we are walking or driving in traffic, all of us can have a safe and happy holiday.

Let's all resolve that no accident, not even a minor one, shall mar the happiness of anyone in Wichita this Christmas!

*Earl K. Duke*  
 Earl K. Duke, Mayor  
 City of Wichita

EKD:br

ON THE LOCAL scene, the gravity of the safety problems arising during the holiday season prompted this letter from Earl K. Duke, mayor of Wichita.

**Police Summon Traffic Violators**

Traffic violations this week ... 14  
 Traffic violations last week ... 6  
 Traffic violations this semester ..... 117

**WRA Entertains High School Club**

The University Women's Recreational Association sponsored a "get acquainted" meeting for the Leaders Club of East High School last week, according to Miss Yurika Onoda, instructor in Women's Physical Education. The Leaders Club is a group of high school women who are interested in physical education. The campus Physical Education Organization introduced the high school women to the campus. The Modern Dance Club and the Folk and Square Dance Club presented several dances to the group. Following this, refreshments were served. "It is the desire of WRA to sponsor meetings of this kind for all high school women interested in physical education, Miss Onoda said.

**Yuletide Convo Offers Messiah**

The second presentation of the "Messiah," an all-choral work based on the Bible, will be given Dec. 20 in the University of Wichita Auditorium at 9:30 a.m. One hundred fifty students will take part in the presentation.

The "Messiah," as a choral work, is divided into three parts, Harold A. Decker, professor and head of the department of choral music, explained.

"The first part consists of the prophecy, or coming of Christ; the second part deals with the birth of Christ; and part three concerns itself with the Crucifixion and Resurrection," said Decker.

The student soloists are Edla Rickard, organist; Loy Hollar and Betty McMillen, sopranos; Bonnie Molz and Mary Esther Bowles, altos; Jay Hershey and James Wainner, tenors; and Eldon Moen, bass.

Besides the soloists, four University organizations take part in the presentation. They are the Men's Glee Club, the Women's Glee Club, the Mixed Chorus, and the University A Capella Choir.

**Library Exhibit On Human Rights**

The meaning and implications of human rights are outlined in a special display set up in the Library this week to observe the anniversary of the adoption of the Universal Declaration of Human Rights by the United Nations General Assembly on Dec. 10, 1948.

The display, organized by Miss Marjorie Barr, serials librarian, is built around a set of large posters which pictorially explain every section of the declaration. Also on display are several pamphlets and magazine articles on human rights and related subjects.

The University of Wichita display was organized to comply with a suggestion by Earl J. McGrath, U. S. commissioner of education, in a letter to President Corbin, according to Miss Barr.

**Logopedics Mothers Planning Fund Drive**

Beginning this weekend, mothers of children who are in phys-

**Institute Head Attends Meeting In Washington**

Dr. Martin F. Palmer, director of the Institute of Logopedics, is in Washington, D. C., attending the mid-century White House Conference on Children and Youth.

These conferences are called by the President of the United States every ten years to bring together groups active in work on juvenile problems.

The present meeting, which began Dec. 3 and will adjourn today, was attended by more than thirty representatives from Kansas. They are all leaders in education or from children and youth welfare groups.

An official of the Institute said that the Kansas Council for Children and Youth, of which Dr. Palmer is a member, co-ordinated the activities of the Kansas group now in Washington.

cal therapy at the Institute of Logopedics will launch a financial campaign to raise funds for equipment needed for the department.

**School To Lose 300 Students**

An anticipated loss of 300 to 400 students next semester due to the Korean war was discussed by the Board of Regents at its meeting Monday night in the Commons.

President Harry F. Corbin indicated that the University will thus face a deficit in budget revenues for the two-semester period of approximately \$40,000. Present or anticipated drafting for duty in the armed services, plus voluntary enlistments have contributed to loss in enrollments, President Corbin said.

The regents also discussed with President Corbin the progress of attempted financing for the new women's dormitory which is stalemated at present because of "almost prohibitive" building costs.

**WE DARE THEM ALL!**

**PHILIP MORRIS** challenges any other leading brand to suggest this test



HUNDREDS OF THOUSANDS OF SMOKERS, who tried this test, report in signed statements that **PHILIP MORRIS IS DEFINITELY LESS IRRITATING, DEFINITELY Milder!**



**1. . . Light up a PHILIP MORRIS** Just take a puff—DON'T INHALE—and s-l-o-w-l-y let the smoke come through your nose. Easy, isn't it? And NOW...

**2. . . Light up your present brand** Do exactly the same thing—DON'T INHALE. Notice that bite, that sting? Quite a difference from PHILIP MORRIS!

Other brands merely make claims—but PHILIP MORRIS invites you to compare, to judge, to decide for yourself.

Try this simple test. We believe that you, too, will agree . . . PHILIP MORRIS is, indeed, America's FINEST Cigarette!

**NO CIGARETTE HANGOVER**

means MORE SMOKING PLEASURE!



CALL FOR

**PHILIP MORRIS**

**Math Club Meeting To Be Held Tonight**

The Wichita Mathematics Association will meet tonight at the U.S. Naval Reserve Headquarters, according to Prof. C. B. Read, head of the University's mathematics department. The association consists of mathematics teachers from Wichita's intermediate and secondary schools, and colleges of the city.

Your Insurance Man Ought to Be **SCHOTT — (Henry)** Insurance of Every Kind Caldwell-Murdock Bldg. 4-3523

**MEATS**  
 Quality Cuts For Every Purpose  
**BELL'S MARKET**  
 1400 N. St. Francis  
 Phone 5-2681 5-4627 Free Delivery

We Buy, Sell, and Repair Typewriters  
**\$25 to \$45**  
**CHESTER TYPEWRITER SERVICE**  
 C. F. (Slim) Chester, Owner  
 C. H. (Chuck) Goodwin  
 Call 4-2607 101 E. First

**WELCOME SHOCKERS**  
 Meet and eat at one of the Five Friendly Continental Grills  
**CONTINENTAL GRILLS**  
 Guard Your Health

### Forum Seating Plan Arranged

Wives and husbands of University students will be permitted to sit in the student section at basketball games, according to a new plan approved by the Student Council Monday night.

Tickets for the wife or husband may be purchased at the Forum ticket window for 50 cents. It will be necessary for the couple to be together at the time the ticket is purchased to assure proper identification, according to Dr. C. B. Read, chairman of the stadium committee.

The Council also approved an additional grant of \$300 for the 1950-51 school year to the Associated Women Students.

Other business included sanctioning a special section on the main floor of the Forum for the Wheaties and Shocks, University pep organizations, at basketball games.

### Alpha Phi Omega String Quartet Plans Initiation, Banquet Dec. 10

Initiation of pledges, a banquet, and installation of second semester officers will mark the activities of Beta Alpha chapter of Alpha Phi Omega, national service fraternity, Sunday afternoon, Dec. 10.

The initiation of pledges will be at 3 p. m. Sunday in Room 201, Morrison Library. The pledges are: Bobby W. Bronson, Loren Dean Hanshaw, Ronald Haume, Frank Kos, Calvert Krueger, Jim Lyle, James McHugh, and William Wyckoff.

The Founders Day banquet will be held at 5:30 p. m. Sunday at the Polar Bear. At that time the second semester officers will be installed. Officers are: Charles King, president; Jim Bain, pledge vice-president; Gifford Babcock, projects vice-president; Marvin Barnes, program vice-president; David Brown, historian; Howard Lydick, corresponding secretary; Russell Watson, recording secretary; and Robert Watson, treasurer.

A concert by the Wichita String Quartet will take place Dec. 11 at 8 p. m. in the Commons Lounge. The string quartet is made up of faculty members of the University of Wichita.

James Ceasar, associate professor in music, and Beatrice Sanford Pease, instructor in violin, play the violin. Lawrence Kinney, instructor in viola, plays the viola; and David Levenson, instructor in cello, plays the cello.

Student tickets for the three remaining concerts by the String Quartet are on sale in the Music office, in Fiske Hall, according to Walter Duerksen, professor and director of the School of Music. Student tickets are \$1.50 while faculty and adult tickets are \$2.50, said Duerksen.

**Donations Needed**  
Give your blood to help save the life of a soldier on the battlefield. Call your Red Cross blood center and make an appointment for a donation.

### Square Dancers Plan Activities

The second meeting of the University Square Dance Club will be held tomorrow at 7 p. m. in the Women's Gymnasium, according to Miss Yurika Onoda, modern dance instructor.

"Enough students to form three sets attended the last meeting and we would like to invite everyone to attend tomorrow night," said Miss Onoda.

### Gow To Conduct Tour At KANS

A conducted tour, open to all interested University students and faculty members, is scheduled Friday at radio station KANS, with George Gow, station news director and University journalism lecturer, guiding the group.

Another tour, showing the practical application of their studies, was conducted for students of this school's radio station operation class Tuesday. The class saw the sales, traffic, management, continuity, and program departments, and the news offices of the downtown studio. Mr. Gow acted as guide for the Tuesday group also.

Tomorrow's survey will deal with the news bureau, its management and operation. Visitors are requested to meet at the station, 1015 N. Broadway, at 2 p. m.

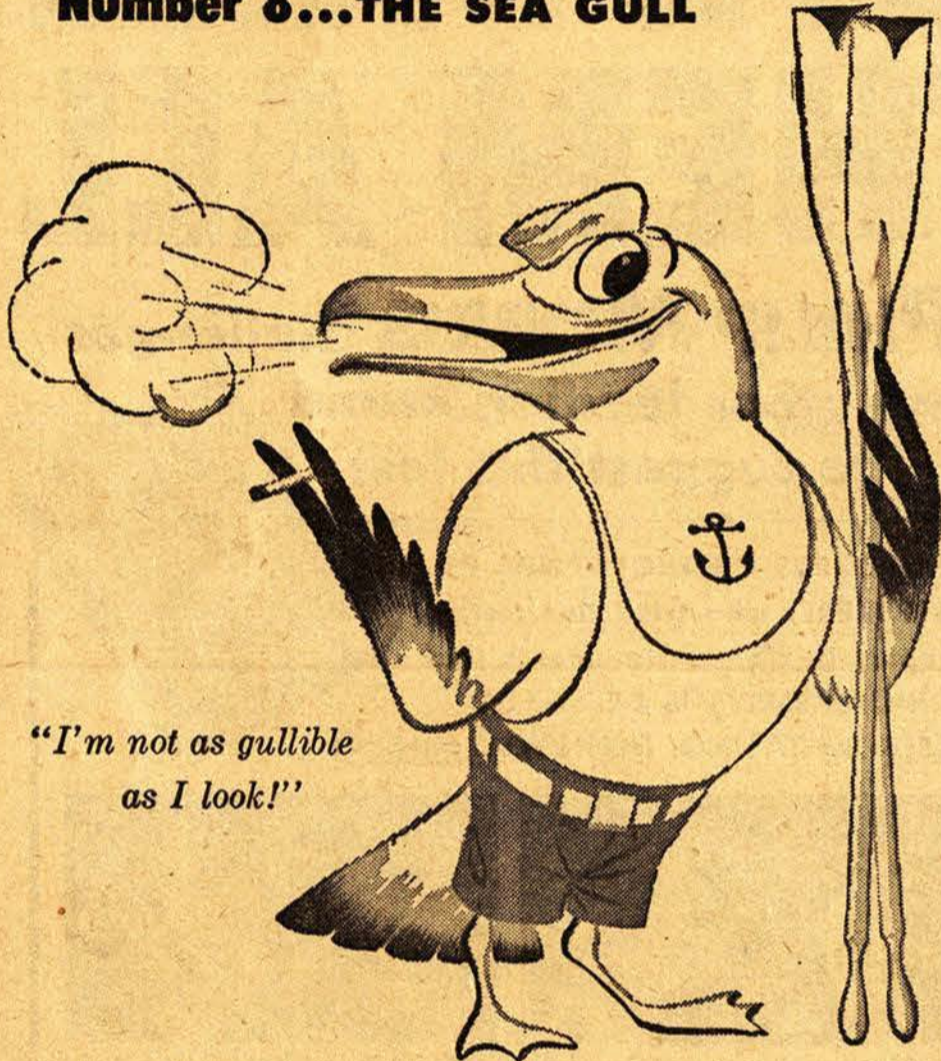
### U of W Choir Plans Downtown Program

The University A Cappella Choir will present an hour-long program tonight at the Lassen Hotel at an advertiser's convention, according to Mary Harlow, publicity chairman of the choir.

A group of spirituals, folk songs, and religious numbers will be included in the program.

## Campus Interviews on Cigarette Tests

### Number 8...THE SEA GULL

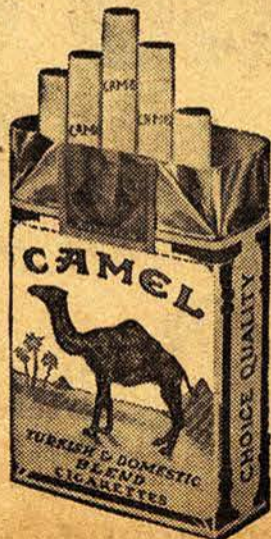


"I'm not as gullible as I look!"

Maybe our little over-water friend is just fishing for a compliment. On the other hand, he may have reference to all these quick-trick cigarette tests you hear about nowadays. Well, he's not the only one who's been at sea. Frankly, how can you judge a cigarette by a swift sniff? Or another cigarette by one fast puff. What's all the rush about, anyway? When it comes to making up your mind about cigarette mildness, we think you'd like to take your time. That's why we suggest:

**The sensible test**—the one that you make on a day after day, pack after pack tryout for 30 days. It's the 30-Day Camel Mildness Test! Simply smoke Camels—and only Camels—for 30 days. Let your own "T-Zone" (T for Throat, T for Taste) be your proving ground. When you've tried Camels as a steady smoke, you'll know why...

**More People Smoke Camels than any other cigarette!**



Small Budget?  
Large Appetite?  
Try Our Dinner

50¢  
**CAMPUS GRILL**

Dot 'n' Earl Cummings

3317 E. 17th

## KINN-WAY GARAGE

1345 N. HILLSIDE, WICHITA  
COMPLETE AUTO REPAIR  
MOTOR, TRANSMISSION  
GENERATOR, STARTER  
BRAKES, RADIATOR  
MOTOR TUNE-UPS  
TOW-IN SERVICE



Hasty Tasty  
University of Wisconsin  
Madison, Wisconsin



5¢

Meeting the gang to discuss a quiz—a date with the campus queen—or just killing time between classes—the Hasty Tasty is one of the favorite places for a rendezvous for students at the University of Wisconsin. At the Hasty Tasty, as in university campus haunts everywhere, a frosty bottle of Coca-Cola is always on hand for the pause that refreshes—Coke belongs.

Ask for it either way... both trade-marks mean the same thing.

BOTTLED UNDER AUTHORITY OF THE COCA-COLA COMPANY BY

WICHITA COCA-COLA BOTTLING COMPANY

© 1950, The Coca-Cola Company

MVC Title Or Cellar?



KEN GUNNING can put these five players into any game and have a team that averages 6 ft. 4 in. in height. From left to right they are: Dick Coleman, 6 ft. 4 in.; Kendall King, 6 ft. 4 in.; Bill Moran, 6 ft. 5 in.; Erwin Knocke, 6 ft. 4 in.; and Rex McMurray, 6 ft. 5 in. Although press deadlines prohibit the inclusion of detailed coverage of the Shockers' first game of the season, the score of the game was Wichita 53, Oklahoma Baptist 45.

ID Cards Good For Basketball

Student identification photographs, which were used during the football season, will be good for admission to basketball games and other activities for the remainder of the semester, according to Prof. C. B. Read, chairman of the stadium committee. "Of even greater importance," said Professor Read, "is the fact that new photographs will not be taken for the second semester. Instead, current identification cards will be validated upon enrollment and payment of fees for next semester."

Valley Squads Open Cage Year With Six Wins

Wichita opened its basketball season Tuesday against Oklahoma Baptist, but most of the other Missouri Valley clubs saw action last week. Defending champion Bradley whipped Houston in a conference game Saturday, 94 to 73. The Braves resume action tonight in Peoria against Oregon State. St. Louis, last year's Valley runnerup, bumped McPherson, 69 to 49 and Upper Iowa, 79 to 51 last week. The Billikens will tangle with Mississippi State, Saturday at St. Louis. Oklahoma A and M, a predicted power of the midwest, opened its season Monday night against West Texas State. The Aggies finished on the long end of a 63 to 32 score. The Cowpokes play host to Arkansas tomorrow night. Detroit, another highly touted midwestern power, opened its season Saturday with a very decisive 89 to 43 win over Kalamazoo. The Titans will be at home to Western Ontario, Saturday night. Drake University also opened its campaign Saturday by defeating Cornell, Iowa, College, 74 to 63. The Bulldogs move into the Big Seven Saturday for a game with Iowa State. Tulsa University was the only Valley team to start its season in losing fashion when the Hurricane was thumped by Arkansas, 59 to 46. Tulsa will have a chance for revenge Saturday when the "Big Wind" plays host to the Razorbacks. The newcomer to the conference, Houston, was drubbed by Bradley in its season opener. The Cougars will get another severe test next Tuesday against St. Louis. With the addition of Houston and St. Louis to Valley basketball competition, the conference will function as an eight-team league rather than a six-team loop as in football.

Shockers, K-Staters Battle To 6-6 Deadlock In Finale

An inspired Kansas State College eleven, doormat of major midlands football, tied favored Wichita, 6 to 6, Saturday at Veterans Field for the Shockers' grid finale. The game, witnessed by 9,500 fans, was one of the roughest ever witnessed in Wichita. There were frequent fistic outbursts, and penalties for unnecessary roughness and illegal use of the hands.

It was a moral victory for the Wildcats and Head Coach Ralph Graham, who resigned two weeks ago effective Saturday. It was the first time a Kansas State team has earned a tie since 1944. The Aggies won their opener this season from little Baker and then were battered on each following Saturday until they met Wichita. The Shockers scored in the second period when All-Missouri Valley back Jimmy Nutter went the last yard at the end of a 69-yard drive.

Kansas State tied it in the third period when Dave Torbett recovered a Dick Sanders fumble on the Wichita 34. Halfback Ted Maupin made the last yard. Neither team was able to convert the extra point. The Wildcats missed two big scoring opportunities. State recovered a Wichita fumble on the opening kickoff on the Shocker 28, but couldn't move the ball. In the final period the Aggies moved to the Munie eight before a fumble stopped the campaign.

In the second quarter, a clipping penalty cost the Shockers 75 yards. Nutter had run a punt back from his own 26 to the 'Cat 12, but the penalty moved the ball back to Wichita's own 11. Happy Kansas State fans, satisfied even with a tie, raced out on the field and fought with Shockers and other local fans for possession of the goal posts. A few punches were thrown and

Nutter Named To MVC Post

Jimmy Nutter, Shocker right halfback has been named on the Associated Press Missouri Valley first team, according to Bob Glazier, director of sports publicity. This team is picked by coaches of the Missouri Valley schools and marks the third time Nutter has been picked for the team.

police were called but the Manhattan fans managed to down one of the goal posts.

Score by periods:				
Kansas State	0	0	0	0-0
Wichita	0	0	0	0-0
Touchdowns:	Nutter, Maupin.			
STATISTICS				
	Wichita	K-State		
First downs	10	17		
Rushing yardage	105	199		
Passing yardage	30	74		
Passes attempted	8	15		
Passes completed	3	4		
Passes intercepted	1	1		
Fumbles	7	6		
Punting average	42.1	31.6		
Fumbles lost	4	1		
Yards penalized	40	105		

Volleyball Tilts Are Scheduled

Intramural volleyball games that will be played on Sunday, Dec. 10, instead of Tuesday and Thursday, Dec. 5 and 7 are listed below.

Time	Opponents
1:30	Lillies-Midgets.
1:30	Scabbard and Blade-ISA.
2:15	Webster A-Gamma B.
2:15	ISA-Gamma A.
3:00	Gamma B-Midgets.
3:00	Steamrollers-Pi Alph.
3:45	ISA-Phi Sig B.
3:45	Scabbard and Blade-Steamrollers.
4:15	Lillies-Faculty.
4:15	RR-Webster B.
4:45	Phi Sig A-Faculty.
4:45	Webster A-Hot Panthers.
Tuesday, Dec. 12	
7:00	Scabbard and Blade-Pi Alph.
7:00	ISA-RR.
8:30	Phi Sig B-Gamma A.
8:30	Webster B-Steamrollers.
7:45	Scabbard and Blade-Gamma A.
7:45	Pi Alph-Webster B.
Wednesday, Dec. 13	
7:00	Phi Sig B-RR.
7:45	Steamrollers-ISA.
8:30	Scabbard and Blade-Webster B.
7:00	Phi Sig A-Webster A.
7:45	Midgets-Faculty.
8:30	Hot Panthers-Lillies.

MILLER

American Guerilla in the Phillipines

With Tyrone Power

---

ORPHEUM

Rocky Mountain

With Errol Flynn

Patrice Wymore

CREST

E DOUGLAS GLENDALE  
"Beauty Spot of the Southwest"

Open 1:45 p. m. Daily  
Monday Thru Sat.—45c 'til 5:00 p. m.

—NOW SHOWING—

Sophisticated — Merry Emlyn Williams — Eve Arden  
"THREE HUSBANDS"

Pete Smith — Cartoon — News

---

CRAWFORD

"Riot Downtown"

Open 11:00 a. m. Monday Through  
Saturday — 35c 'til 1:00 p. m.

—NOW SHOWING—

High Adventure — Breathless Suspense  
John Garfield — Patricia Neal  
"THE BREAKING POINT"

Adventure — Cartoon — News

For Your Private Parties

ELK HORN LODGE

Can Accomodate 40 Persons  
5400 Porter  
Phone Herb Pestinger  
for Dates  
Dial 5-3905

KANSAS WONDER SHOW PLACE

NEW MOON

WICHITA - KANSAS

SATURDAY

JERRY MAYBURN


AND HIS ORCHESTRA

Let It Snow! Let It Snow!

But Drive Safely

I'll Service Your Car for Winter

I'll Pick You Up After Class



BUCK FREEMAN

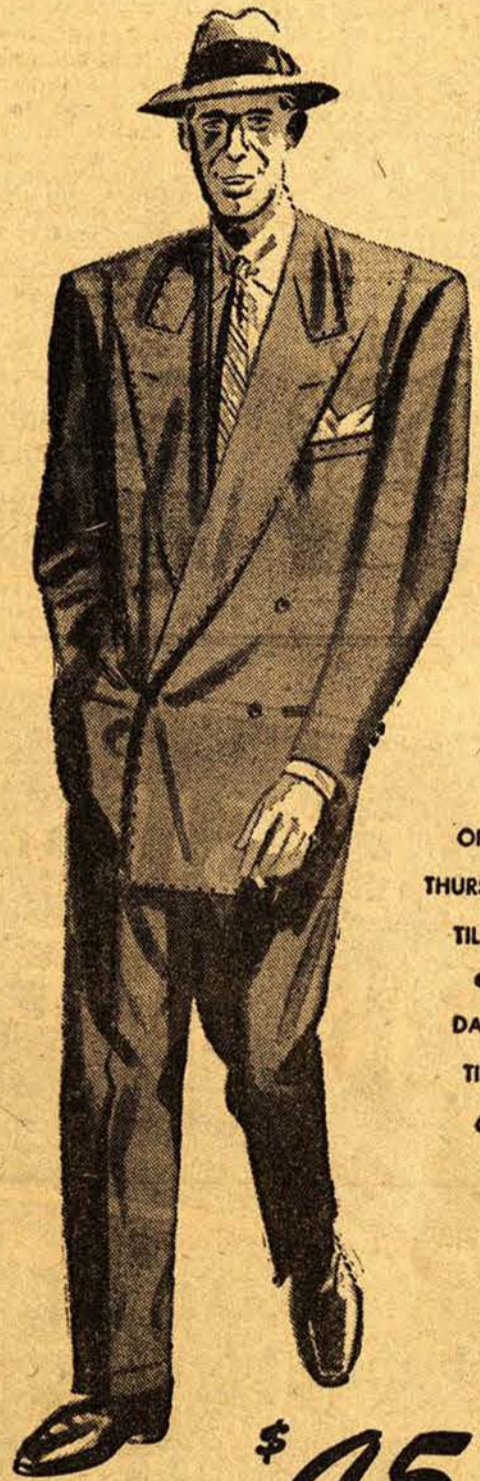
Texaco Service

13th and Hillside 62-2383

See The Classifieds Page 11

Henry's

A TYPICAL CAMPUS SHOP VALUE



OPEN THURSDAYS  
TILL 9  
DAILY  
TILL 6

\$45

Commander Blue

A blue suit to make any man look better... anywhere, at any time. Here is a fine, all-wool unfinished worsted suit... styled in a smart long-roll, one-button model with a full drape. In sizes to 42, regulars and longs... an exceptional value at this modest price.

Campus Shop  
Second Floor



# Shocker Basketball Team Is Tabbed By Experts For MVC Cellar Position

By Bill Brooks  
Sunflower Sports Editor

The loss of six lettermen out of 13 from the 1949-50 Shocker basketball squad has tabbed the Wichita team as the one most likely to place last in the Missouri Valley Conference for the second consecutive year.

At least this is what the experts have predicted, and Head Coach Ken Gunning admitted as much by saying, "We'll be the underdog in every game we play this year."

Four of last year's letter winners graduated, one was called into the service, and another dropped the cage sport because of increased academic obligations.

Possibly the only optimistic note is the fact that four of last year's starting lineup will be back with the Wichita team again this season. The only one lost to the starting five was Don Toevs, captain of last year's team, who graduated.

John Friedersdorf, a junior forward from Franklin, Ind., is

expected to pace the Shocker's scoring again this season. He averaged 13.3 points per game in his first year of varsity competition last year.

The three other members of the 1949-50 starting lineup are John (Cot) Friesen, from Inman; Rex McMurray, Galva; and Erwin Knocke, Great Bend.

Up from last year's freshman team will be three untried prospects. Of the three, forward Bill Tibbetts of Lawrenceburg, Ind., is most likely to land a varsity starting berth. Other sophomore prospects are Bill Moran of Newton, and Hal Eckstein, a forward from Shelbyville, Ind.

# Nutter, Ubben Lead Shocker Scoring Parade

Final University football statistics released this week show that Jimmy Nutter and Wayne Ubben led the Shocker scoring parade this season with 54 and 33 points respectively. Left halfback Nutter gained his point total on 9 touchdowns, and fullback Ubben attained his tally mark on one touchdown, 24 extra points, and one field goal.

Leaders in other departments include left halfback Herb Edgington in yards per carry and total offense average (5.76 yards a game; quarterback Eddie Kriwiel in passing percentage (4.28); Right end Norbert Moranz in pass receiving with 309 yards gained; and quarterback Dick Sanders in punting with 35.6 yards percentage for five attempts.

Top yard gainer for the Shockers was Nutter, who played in the entire 10-game schedule and picked up a total of 720 yards for the Mules. Two hundred and twenty-one yards of this figure were gained on kickoff returns for a top average of 20.09 a game.

Fullback Eli Romero lead in total yards gained by punting with 1,283 on 39 attempts; right halfback Walt Corbin headed the field in punt returns with a 16.75 yard average for four carries.

Shocker team totals include: Rushing—2,654 yards gained, 347 yards lost; Passing—143 passes attempted, 52 completed, 870 yards gained; Scoring—28 touchdowns, 24 points after touchdown; points 203; total offense—656 plays, 2,977 yards.

# Four Volleyball Winners Listed

The unaffiliated team defeated the Delta Omega team this week 66 to 14 in the women's intramural volleyball tournament, according to Miss Dorothy Martin, instructor in Women's Physical Education.

Pi Kappa Psi defeated Alpha Tau Sigma 37 to 23, and ISA defeated Sorosis 36 to 28. Pi Kap II won over Alpha Tau, II, 46 to 32 and Pi Kappa Psi defeated Sorosis 65 to 13.

# Utah State

(Continued from Page 1)

Murray handles the position on jump balls and defense.

Friesen has shown marked improvement this year, Gunning said. Friedersdorf, whose 13-plus points per game last season earned him third place in the Missouri Valley conference scoring race, is headed for another good year, Gunning believes.

The Shocker Freshmen-Roskam Brothers Realtors preliminary game will be at 6:15 and the varsity contest is set for 8:15.

Baldwin and other Fine Pianos



211-13 W. Douglas 3-9926

FEDERALLY INSURED Savings and Investment Accounts opened through the mails. Legal for Trust Funds. Dividends compounded and paid twice a year.

FEDERALLY INSURED UP TO \$5,000 Commercial Savings AND LOAN ASSOCIATION 113 SOUTH MAIN STREET - WICHITA, KANSAS

# Needham Recovering From Recent Illness

Les Needham, Shocker basketball and football trainer, is recovering from a Monday morning operation at St. Francis Hospital.

Needham, who is also trainer for the Wichita Indians baseball club, is in room 336 at the hospital.

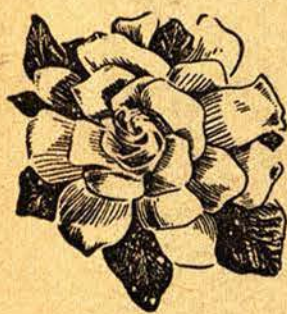
# HE'LL HAUNT YOU



This is the ghost of Christmas Future, haunting you because you have to spend so much time washing dirty clothes instead of doing your Christmas shopping. Rid yourself of that haunt by bringing your laundry to Skippy's. We're open from 8 to 8.

# SKIPPY'S LAUNDRYETTE

University Park Center 62-2156 3936 E. Thirteenth



# CORSAGES

Individually Styled For All Occasions

SPECIAL PRICES TO ORGANIZATIONS

# REMEMBRANCE FLOWER SHOP

3934 E. Thirteenth 6-8196 Free Delivery

# "EASIEST TEST IN THE BOOK"

SAYS: JOHN DWYER BOSTON COLLEGE '52

# MAKE THE TOBACCO GROWERS' MILDNESS TEST YOURSELF...

# "TOBACCOS THAT SMELL Milder SMOKE Milder"

YES... Compare Chesterfield with the brand you've been smoking... Open a pack... smell that milder Chesterfield aroma. Prove—tobaccos that smell milder smoke milder.

Now smoke Chesterfields—they do smoke milder, and they leave NO UNPLEASANT AFTER-TASTE.

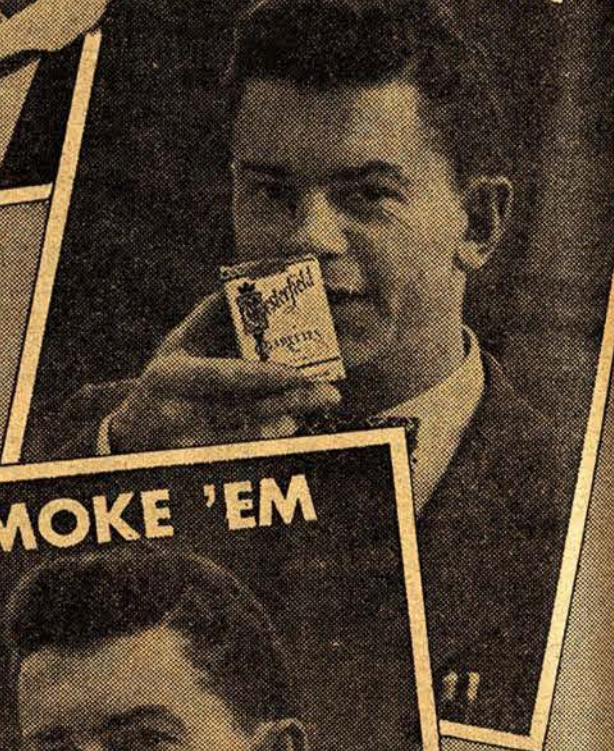
# CHESTERFIELD

LEADING SELLER IN AMERICA'S COLLEGES

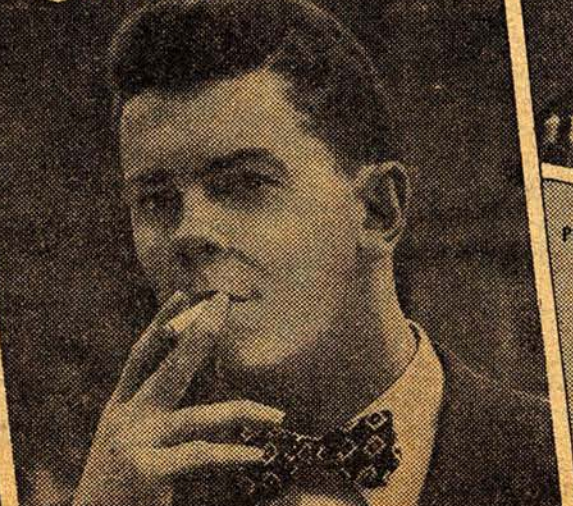
# OPEN 'EM



# SMELL 'EM



# SMOKE 'EM



PHOTOGRAPHS TAKEN ON CAMPUS

Copyright 1950, Lorillard Co., New York