

## Concert Is At 8:15 p.m. In Auditorium

Robertson Is Soloist; Students Admitted Free Through Activity Card

The Wichita Symphony Orchestra directed by Orien Dalley will present its third concert for University students in the Auditorium tonight at 8:15. Appearing as guest soloist will be David R. Robertson, violinist and assistant professor and head of the department of violin and instrumental theory at the University.

Robertson has been a staff artist with both the Columbia and National broadcasting systems and has played under the direction of such well-known conductors as Toscanini, Stokowski and Damrosch.

He began his study of the violin at the age of three. After graduating from Drury College, cum laude, he attended the Juillard Graduate School on a fellowship.

During the war Robertson served as communications officer in the Phillipines and aided in the re-organization of the Manila Symphony Orchestra.

He has been concert master of the Wichita Symphony since 1946.

One of the highlights of tonight's program will be the orchestral performance of Jean Sibelius' Symphony No. 1, which will be directed by Orien Dalley.

Dalley has the honor of being the only American ever granted the privilege of studying composition with this great composer. Sibelius was so impressed with Dalley that arrangements were made for him to be guest conductor of the National Symphony Orchestra of Finland. Along with Serge Koussevitsky, Conductor of the Boston Symphony, Dalley has appeared as one of the only two Americans to conduct this great symphony orchestra.

He first conducted this symphony before a Finnish audience on December 18, 1938, in Helsinki.

The complete program for this evening includes:

Symphony No. 1.....Sibelius  
Concerto in D Major, for violin and orchestra.....Mozart  
Waltz of the Flowers.....Tschalkowsky

Prize Song, from the Meistersingers.....Wagner  
Introduction and Tarantelle.....Sarasate

Sorcerer's Apprentice.....Dukas  
University students will be admitted upon presentation of activity tickets.

## W. U. Teams Plan Debate

Eleven teams from the University of Wichita will participate in a three-state debate tournament Saturday at McPherson junior college, according to Leslie M. Blake, debate team head and associate professor of speech.

Nebraska, Kansas, and Oklahoma will be represented.

The McPherson contest will be first of a series of debates scheduled for Wichita teams on the subject, "Resolved: That a World Federal Government should be established."

On Jan. 30-31, Wichita debate teams will participate in the University of Oklahoma tournament at Norman and will be represented in the University of Denver tournament at Denver, Feb. 12-13-14.

One delegation of Wichita debaters is scheduled to attend the Glendy Burke Centennial at Tulane in New Orleans, Feb. 26, 27, 28. On the same week-end, a second delegation will represent Wichita at the University of Nebraska at Lincoln.

In the second week of March, Wichita teams will migrate to Lawrence for the Missouri Valley Forensic League.

Following is a list of debate team members scheduled for activities in the series: Bill Reynolds, Don Moore, June Cale, Herbie James, Kenny Smith, James Fitzpatrick, Karl Pond, Beth Jones, Darrell Leason, Harry Hobson, Leo Wetta, Rae Batt, Proctor Guy DuCharm, Helen Christy, Fanny Thompson, Albert Voight, Jack West, Albin Mortenson, Wayne Barrington and Herbert Heywood.

# THE SUNFLOWER

Volume XLVIII, No. 19

University of Wichita — Wichita, Kansas

January 15, 1948

## Six Women Are Nominated for Parnassus Queen



Frances Asher



June Cale



Lois Cunningham



Peggy Dull



Mildred Schaaf



Maryann Reed

Six University women have been nominated by the five sororities and the Independent Students Association as candidates for the 1948 Parnassus Queen according to Betty Jacobs, editor-in-chief of the yearbook. The Queen will be named at the annual semi-formal Parnassus dance to be held from 8 until midnight Monday, Jan. 26 at the Blue Moon.

The six candidates include Peggy Dull, freshman, Pi Kappa Psi sorority; Frances Asher, freshman, Sorosis sorority; Mary Ann Reed, freshman, Alpha Tau Sigma sorority; Lois Cunningham, freshman, Delta Omega sorority; June Cale, senior, Epsilon Kappa Rho sorority; and Mildred Schaaf, sophomore, Independent Students Assn.

Candidates will be judged in person by a board of three photographers consisting of Paul Threlfall, Beacon chief photographer, Mike Murphy, Eagle chief photographer, and Math Borniger, Parnassus photographer.

Tickets for the dance, being sold at \$2.50 per couple, are now available in the Commons Lounge or from any member of the varsity committee and will be sold at the door. Dick Haughton and his orchestra will play for dancing. Dress will be semi-formal.

A banquet for candidates, judges, Parnassus staff members, and journalism faculty members will be held at the Blue Moon at 7 p.m. Shirley Holloway is in charge of arrangements for the banquet and Maurice Starr is dance chairman. Lester Rosen will serve as toastmaster at the banquet.

Persons who have purchased tickets may call the night club for table reservations according to Gene Dagel, publicity chairman.

## Coach Eyes Several For Grid Posts

Neve Appears in Lead For Backfield Coach; Ravensberg Mentioned

Coaching staff vacancies created by resignations of Ralph Graham, athletic director, and Paul Walker, end coach, may be filled within the next couple of weeks with four or five names being unofficially mentioned as possibilities.

Leading the list as right-hand man to the Shocker's new athletic director and head grid coach, Jim Trimble, is Norval Neve, Kansas State backfield coach. The recent disastrous K-State season, ending with the twenty-sixth consecutive Wildcat defeat, apparently has not cooled boosters on Neve's value.

He is remembered throughout this area as one of the great Hutchinson High School coaches and a consistent winner.

Earl Doloway, 1942 University of Indiana fullback sensation and close friend of Trimble, is also reported to be viewed with favor. He is now coaching at the LaPorte, Ind., High School.

Three names are being mentioned as possibilities for the line coach, who will work primarily with the ends.

They are Bob Ravensberg, all-American University of Indiana end in 1945, Larry Schultz, now head grid coach at Defiance, Ohio, College, and Carl "Moore" Mulleneaux, 1947 St. Louis University end coach.

Ravensberg, now a senior at Indiana, is from Kentucky, and is reported now to have an "attractive offer" from the Chicago Cardinals.

A close friend of Trimble, he is rated as one of the top young coaching prospects in the country.

Schultz coached at the University of Nebraska during the war. Mulleneaux, a Utah State graduate, has put in one season with the Billikens.

Since his return Saturday from the N.C.A.A. meeting in New York City Trimble has been working on filling of his staff openings as well as lining up the 1948 grid schedule.

"I'm doing by best to bring competent, high-type men here," Trimble said. "They'll have to be tops to fill the shoes of such good men as Ralph and Paul."

## Army Starts New Class

R.O.T.C. will enroll eligible students in first year advanced, infantry for the second semester with the exception of entering freshmen who are starting their first semester in college according to Col. O. T. Beeler, professor of military science and tactics.

Students withdrawing from school or transferring at the end of the current semester have created vacancies, and applicants should apply immediately to be sure of enrollment.

Students wishing to enroll in the freshmen or sophomore courses 113 and 223, starting R.O.T.C. for the first time, may enroll in the 223 course.

## Sunflower To Seek Kansas Association Press Membership

The Sunflower is taking steps toward becoming a member of the Kansas press association, according to Max Milbourn, head of the journalism department.

The association, for which the Sunflower will soon file its formal application for membership, is composed of 300 weekly and daily newspapers of Kansas.

Milbourn and George Phillips, assistant professor of journalism, attended the annual meeting of the association last Friday and Saturday in Topeka.

## Rosen Re-named Staff Chief; Five Other Vacancies Filled

Second semester's Sunflower staff members were announced Tuesday by Dr. Francis J. Nock, chairman of the Board of Student Publications.

Lester Rosen, junior, was appointed editor-in-chief. Rosen has served as sports editor, managing editor, and this will be his second term as editor-in-chief.

Other members, are Bill Fein, junior, managing editor; Jim Foster, senior, desk editor; sports editor, Dale Henry, junior, and Billie Stover, freshman, society editor.

Elmo Reiff, junior, was selected for a second term as business manager of the University paper.

Other action taken by the Board at its Tuesday meeting was the awarding of contracts. The printing contract for Parnassus, student yearbook, was let to McCormick-Armstrong Printing Company and the engraving contract to Mid-Continent Engraving Company.

Yearbook cover sketches also were discussed at the meeting. One sketch will be submitted this week to cover houses for cost estimates.

## Mrs. F.D.R. Cancels W.U. Forum Lecture; Says She's Too Busy

Mrs. Franklin D. Roosevelt, tentatively scheduled for the University student forum program sometime in March, has wired cancellation of her appearance here to Dick Elving, forum president.

The cancellation, she said, was "due to a heavy personal schedule."

Elving said a replacement speaker would be announced as soon as possible.

The next forum speaker will be here Feb. 3. He is Bernard Iddings Bell, nationally-known educator now lecturing at the University of Chicago.

## Hero! R.O.T.C. Instructor Has Enviably Record As A Paratrooper

First Lt. Robert B. McGhee, Field Artillery Reserve, recently joined the R.O.T.C. staff as instructor on temporary duty.

Lieutenant McGhee first entered the service in 1938 with the cavalry and trained as a scout. He left the cavalry and joined the field artillery, a few months later transferring to the tank destroyers and receiving a commission as second lieutenant.

After 15 months with the tank destroyers he was transferred to the infantry, and a short time later took parachute training. Upon receiving a paratrooper rating he was sent overseas to the European Theatre. His first combat action was with the Eighty-Second Airborne Division in Holland. He was then transferred to the Seventeenth Airborne Division and was placed in command of the 194th Regiment Anti-tank Company.

## Eight Campus Organizations Name Next Semester Heads

New officers were elected this week by eight campus social organizations. Following installation services, those elected will hold office during the second semester.

Officers of Alpha Tau Sigma are Marjean Spencer, president; Shirley Holloway, vice-president; Beverly Coldsnow, secretary; Betty Williams, treasurer; Rosalee O'Haver, historian; and Wildalee Rodgers, Women's Pan Hellenic representative.

Epsilon Kappa Rho officers are Lois Burrell, president; June Cale, vice president; Mary Millsap, secretary; and Marjory Van Camp, treasurer.

Officers of Pi Kappa Psi are Betty Brock, president; Helen Majors, vice president; Virginia Kesterson, secretary; Betty Fiedler, treasurer; Shirley Clark, assistant treasurer; Elizabeth Thies, house manager and rush captain; Virginia Kiefer, junior Pan Hellenic representative; Betty McIntosh, cheer chairman; and Rosie McPeak, reporter.

Sorosis officers are Maxie Fey, president; Jo Miller, vice president; Carol Groom, secretary; Marilyn Hockett, treasurer; Norma Holleike, Women's Pan Hellenic representative; Jo Harper, pledge mother; and Sue Pearl, historian.

Officers of the Men's Pan-Hellenic Council were elected at the regular meeting Monday night. Those who will preside second semester are president, Jim Denninghoff, Pi Alpha Pi; vice-president, Elvin Vaughn, Men of Webster; secretary, George Hickok, Phi Upsilon Sigma; treasurer, Gerald Ramsey, Alpha Gamma Gamma.

Three men from each fraternity were elected to serve on the council. Dr. Nock was re-appointed sponsor of the group.

Alpha Gamma Gamma officers are Art Hodges, president; Paul McCauley, vice-president; Charles Christian, secretary; Ted Ashmore, treasurer; and Jim Dennison, sergeant-at-arms.

Phi Upsilon Sigma president, Homer Hulsey; vice-president, Dan Dwyer; secretary, Leland Abel; sergeant of arms, Bud Elliott; recorder, Bill Gordon; Pan Hellenic representatives, Jack Tedrick and Bill Geist; board of control, Bud Phillipps, Earl Chandler, and Hank Edwards.

Royal Barker is the newly-elected president of Pi Alpha Pi.

Other officers elected are James Denninghoff, vice-president; George Robbins, secretary; Lester Rosen, treasurer; John Young, sergeant-at-arms; Bill Bass, critic and Roy Craig, scribe.

Executive committee are Charles Banks, chairman; Ralph Brack and Frank Farnsworth, associates.

## Denver Airs W. U. Script

Information about the Institute of Logopedics was the subject of a 15-minute radio program sponsored by Denver University and broadcast over a number of Colorado stations in December.

The program, called "Fighting Words", was one of a series of "Knowledge in Action" programs sponsored by Denver University and based upon material from colleges and universities throughout the United States.

The request for material for the program was received by Max Milbourn, acting head of the journalism department.

As a result of the program, Dr. Martin F. Palmer, director of the Institute, has received numerous inquiries concerning the Institute.

Veterans attending the University have been extended an invitation to attend a special veterans dance to be held in the American Legion hall, 126 North St. Francis, from 9 p. m. until midnight Saturday. No admission will be charged and a special section is being reserved for college students according to officials. Wayne Euchner and his orchestra will provide dancing music.

**Rock Castle Supper Club**

DINE - DANCE  
4-7615  
3811 N. Broadway  
Chris Miller at the Piano

## Sorority Rushees Sign Up Jan. 27-29

Registration for second semester sorority rushing will begin Tuesday, Jan. 27, and continue through Jan. 29, in the Women's Gym.

Women who paid the 50 cent fee first semester and did not pledge need only sign the rush list. Open house will be Feb. 8; all rushees must visit all the sorority houses between 3:00 p. m. and 5:00 p. m.

## Dean Sipple Attends Teacher Convention

Leslie B. Sipple, Dean of the College of Education, was one of the six members of the Kansas delegation at the regional conference of the National Commission on Teacher Education, in Minneapolis, Minn., in December.

The conference was held at the University of Minnesota, and seven mid-west states were represented. Many national and state teacher authorities were at the conference, said Dean Sipple.

## Hilder Shaw Honored By Local Chapters Of Music Fraternity

"I only wish some of your fine talent could be distributed throughout other chapters in this district," Hildur Lavine Shaw, national third vice-president of Mu Phi Epsilon, said when honored by the University alumni chapter and local chapter of the national music sorority at a meeting Sunday evening.

Phi Pi, local chapter, held the meeting in honor of Miss Shaw, which included initiation and pledge services.

The alumni chapter conducted a regular business meeting and musical program.

The program included selections by Mary Eby Bickford, harpist; Carol Holman, flutist; and Beatrice Sanford Pease, violinist.

Refreshments were served by Mrs. Pease and Miss Holman.

Life magazine is displaying 24 photographs and paintings on the "Age of Enlightenment" in Morrison Hall, announced Professor Clayton Staples, head of the art department. This exhibit will portray the highlights of Paris and Versailles of about 1500 when sciences and trades were developing.

## Kansas Indian Relics Exhibited in Library

Kansas Indian artifacts and arrowheads from the Arkansas Valley region are now on display in the University library. They were made by the Wichita Indians, according to Dr. John Rydjord, head of the history department.

Those of the dexter type indicate different culture from the rest of the display, Dr. Rydjord said. The diamond shaped implements, sometimes called the quivira knives, were used to scrape meat from bones.

Arch Bryant of the Wichita Eagle, and Dr. Rydjord made the expedition together to obtain the relics. Bryant's account of the trip has appeared in the "Kansas Quarterly."

## Hey, How about A Coke\* Date?



## SUNDAY MATINEE DANCE

3 to 5:30 P.M.

## LEO PIEPER

With His Accordion and ORCHESTRA

**FREE** Coca-Cola to all in Liberal Quantities

\*Coca-Cola and its abbreviation "cola" are registered trade marks of the Coca-Cola Bottling Co.

ADMISSION To Sunday Matinee Dance 88c A Person Tax Included

**BLUE MOON**

— SULLIVAN —  
INDEPENDENT  
THEATRES  
— Coming Sunday —

**CIVIC** 725 West Douglas

Bogart and Bacall  
"Dark Passage"  
John Mills — Valerie Hobson  
"The Great Expectations"

**CRAWFORD** 409 South Topeka

Katharine Hepburn  
Robt. Walker — Paul Henreid  
"Song of Love"

**WEST** 901 West Douglas

Robt. Paige — Ted Donaldson  
"Red Stallion" Color  
Laraine Day — Brian Aherne  
"The Locket"

**King**  
MUSIC CO.  
BALDWIN

and other fine pianos  
Teachers recital hall available

**FOX**  
THEATRES  
"The place to go"

**Miller**

Starting Thursday January 15

"Daisy Kenyon"

Joan Crawford—Dana Andrews  
Also THE MILLER HOUR

**Orpheum**  
Boulevard

Starting Thursday January 15

"Good News"

June Allyson—Peter Lawford  
Also the ORPHEUM &  
BOULEVARD HOURS

**Palace**

Starting Thursday January 15

"Kiss of Death"

Victor Mature—Brian Donlevy

"Stork Bites Man"

Jackie Cooper—Gene Roberts

## CLEARANCE SALE

You Can Now Fit Yourself

With A

Topcoat and Suit

AT GREATLY REDUCED  
PRICES

**Ty Lockett's Bell Clothing Co.**  
409 E. DOUGLAS

## Your Wedding Portrait GIVEN



A beautiful, large 11 x 14 inch, regular \$16.95 Portrait of the Bride . . . Bride and Groom . . . or of the Betrothed, is GIVEN with each engagement ring or wedding ring set purchased at "CROWN" regardless of the price!

You will want and always treasure this photographic record of the happiest occasion in both your lives! The portrait will be made at no cost to you, by the MONTAGUE STUDIOS, Hillside and Douglas, one of the Southwest's leading photographic studios. Crown Diamonds may be traded in on a larger diamond anytime up to 5 full years for 10% MORE THAN THE PURCHASE PRICE! No deduction is made for mounting wear.

**CROWN JEWELRY CO.**

In the Central Bldg., Corner Main and Douglas

DRINK A BITE TO EAT!



AT 10-2-4 O'clock

Dr. Pepper Bottling Co.

324-26 S. Main  
Wichita, Kansas

At W. U.

**BETTY SCHENAKE**

Smokes  
**CHESTERFIELDS**

BETTY says—

"I started smoking Chesterfields, switching over from time to time, but always came back to my original brand—Chesterfield Cigarettes."

"VOTED TOPS! - - Chesterfield the largest selling cigarette in America's colleges—(by nationwide survey)."

**Rush Rules Listed  
By Men's Pan Hell;  
Rushing Ends Jan. 31**

Rush rules for second semester fraternity rushing were announced by George Meloy, outgoing men's Pan Hellenic president. Preferencing will be in Room 118 of Science building, Sat., Jan. 31.

The eight rules are:

1. Rush Week shall commence on Thursday noon of registration week and shall continue through Friday, closing at 12 midnight, Friday.
2. After 12 midnight Friday there shall be no further rushing until the following Monday morning at 8 a. m.
3. All rushees who wish to preference a fraternity on Saturday of Rush Week shall meet on the campus with the Preferencing Committee.
4. No fraternity shall have more than two dates with any one man, and of these two dates there

can only be one lunch date, and one dinner date.

5. (A) A date once accepted shall not be broken by either the fraternity or the Rushee.

(B) Any Rushee breaking a date shall not be pledged for one semester.

7. The practice of "spiking" is prohibited. "Spiking" is the breaking of any part of the following rules: A Rushee shall not: (A) Be with a fraternity man between 12 Midnight Friday and 6:00 p. m. Saturday of Rush Week, or

(B) Be prevented by one fraternity from dating another.

8. Rushee to be eligible to pledge, must be carrying 12 hours of which seven must be for credit. Audit hours must be attended and a passing grade made.

Dr. N. H. Pronko and Prof. J. W. Bowles Jr., of the University psychology department, received recognition in the December issue of American Psychologist Magazine for their work as research associates at the University Guidance Center.

*Round about  
the Campus*

**WANTED** for publication . . . the original poem written by Bob Beuke about Gooch Macaulay's overseas experience (?)—Gooch's only comment was "the egnominy of it all," Bob Fidler on campus this week loaded with souvenir grapefruit presented him by Fresno returnees—Bob's to leave soon for overseas duty.

**FACULTY** members took a holiday from dignity of professions and afforded students many a laugh at the Follies Friday—exposed talent caused many a chuckle long after the curtain dropped.

Cris "Sweet Tooth" Boomis, Candymaker shop partner, offers more than traditional congrats to campus couples who announce engagements or weddings . . . all he asks is that said parties wander into ye olde sweet shoppe and he will present each couple a box of Candymaker concoctions.

**ENGAGED** is Vera Louise Tomb, '44 grad and member of Pi Kappa Psi, to Ervin Syfert . . . Still impatient and still waiting for spring, Bob Tanner may be seen seriously studying the Ouija board—we hear he's trying to teach the board to spell "boy." . . . Tom Berberich dramatically erased his name from the eligible list by passing out engagement cigars Monday night.

"Weight Lifter" Denman specifying Do's 'n Don'ts of Courtesy (?) Week caused Gamma pledges to cringe, while Sig pledges posed for a local photographer—are Parnassus queen contestants getting competition? And the "Cat-sup" boys will be back in their glory come the final finale.

**BETTY** Abernathy, former W.U. student and member of Epsilon Kappa Rho, and Jim Foster, University senior and Sunflower desk editor, will be married Jan. 24, at St. Mary's Cathedral.

A strand of pearls has been lost on campus . . . finder will receive a reward upon returning it to Mrs. C. U. Price, Commons hostess.

**I**f readers note a change in the size of the by-line of "Typed on a Wednesday," it will be because Bill Fein now holds the exec post of managing editor. If the line doesn't use up more space than the story, readers shouldn't gunch! Men will forgive "over solicitous" fems—for they are merely

seeking out "drags" to the Y.W.C.A. annual H.Y.M. dance Valentine's day.

Juanita Ferguson is engaged to Charles Schrapp.

**SEEMS** Richard Kennedy's automobile (?) is sporting the "new look" as a result of a collision with a village bus—Richard cringes at sight of a "green peril" now and sighs over the tapered middle and bulges of his vehicle.

After six actives fell through a collapsible chair, Bob "always gullible" Sandifer was given the seat of honor . . . picking himself off the floor he retired to the pledge den red-faced and shaken.

**I.R.C. to Meet Again  
In I.S.A. Brig Feb. 5**

"World Police Force of the United Nations" was the topic of a speech given to the International Relations Club members by Judge Roy Rogers, of the Wichita police court.

Judge Rogers, a graduate of this University, compared the local police force with the police force provided for in the United Nations charter. At the close of his speech the meeting was opened for discussion.

The next I.R.C. meeting will be Feb. 5 at 7:30 p.m., in the I.S.A. brig.

**ESTELLE COMPTON, Inc.**

**WANT TO MODEL? HERE'S HOW!**

If so you must . . .

- Have 3 hours per week for training
- Call 4-1723—appointment for free interview
- Be accepted and enroll for classes
- Successfully complete the PROFESSIONAL MODELING COURSE

**ESTELLE COMPTON, Inc.**  
812 KFH Bldg. Ph. 4-1723

**ARMSTRONG'S**

**ICE CREAM IS—**

**QUALITY CHECK**

and Approved

QUALITY CHECK ICE CREAM ASSOCIATION

**MODERN**

**Glamour Portraits**

by

**MATH BORNIGER**

2226 W. Douglas Phone 2-4204

Your Official Parnassus Photographer

Listen to "Garden in The Sky", Mon., Wed., Fri.  
10:30 P.M. — KAKE — 1490 On Your Dial

**SPECIAL NOTICE TO THE CLASS OF '48**

**Here's your chance to qualify for a job that pays \$336 a month after one year's training**

**A** special interviewing team will soon be here to talk with men interested in U. S. Air Force Pilot Training. It is equipped to interview applicants, give preliminary physical examinations and flying aptitude tests.

You may be eligible for appointment to the March 1 or July 1 Aviation Cadet Classes. If you qualify, you begin at \$75 a month, with food, quarters, uniforms, medical and dental care provided. Upon successful completion of the 52-week training course, you're commissioned a Second Lieutenant, Air Force Reserve, and assigned to active duty as pilot with the U. S. Air Force at \$336 a month to start. You also get an extra \$500 for each year of active service. There are many other benefits that make this one of the outstanding opportunities offered to this year's graduating class.

Why not drop in and discuss it?

**CAREERS WITH A FUTURE**  
**U. S. Army and U. S. Air Force**

**INTERVIEWS WILL BE HELD:** January 26, & 27

**AFTER THE GAME REFRESH WITH COKE**

**5¢**

BOTTLED UNDER AUTHORITY OF THE COCA-COLA COMPANY BY  
**THE WICHITA COCA COLA BOTTLING COMPANY**

© 1948, The Coca-Cola Company

### You Can't Win!

The man with the striped shirt and whistle in his mouth has been the target of many basketball fans this season. He has been called "a blind old bat", "the opposition's middle name", "Republican" by the Democrats, "Democrat" by the Republicans, and a "leftist" by the rightist but no one wants to call him "human."

With all the cat-calls and names given the basketball official, there isn't a fan that would stand for a game without him. Conversion of cage fans into officials for one night might restore that thing called "sportsmanship." Those converted fans would suddenly find themselves going blind, turning Republican, Democrat, or leftist.

Jeering the opposition has also become a practice of some fans. Some do it to draw attention, others to express anger, while some do it to keep up with the guy next to them. If name calling scored points, the Shockers would be undefeated in Forum play this year.

So, Saturday night when you go to the Forum, remember that the players and the officials are related, perhaps distantly, to the human race. If you must yell, help the cheerleaders along. Above all remember that "flat-tery will get you nowhere!"

### Happy Birthday

The Sunflower joints students, faculty and friends throughout the city and state in extending best wishes to President Jardine on the occasion of his sixty-ninth birthday tomorrow.

### New At The Library

**GAY GENIUS** is a biography of China's 11th century Su Tungpo who was not only a great man but "a prowler in the moonlight." Lin Yutang has written a lively account of a remarkable man. 92 Su939L.

**LETTER FROM GROSVENOR SQUARE** was written by John Winont before he took his own life recently. It is the story of his ambassadorship to England up to Pearl Harbor. A great deal of firsthand, appealing reading is available here, 327.930942 W 75.

### THE SUNFLOWER

Volume XLXIII, No. 16  
Jan. 15, 1948

Published each Thursday morning during the school year by students in the department of journalism of the University of Wichita except on holidays, during vacations and examination periods. Entered as second class matter, September 24, 1916, at the postoffice at Wichita, Kansas under the Act of March 2, 1879.

The Sunflower is one of the oldest student publications in the state of Kansas, having been founded in 1896.

Subscription by mail in the United States is \$2.00 per school year. Advertising rates furnished upon request. Address The Sunflower, University of Wichita, Wichita, Kansas, Telephone 4-5331.

Represented by National Advertising Service, Inc., College Publishers Representative, 420 Madison Ave., New York, N. Y., Chicago, Boston, Los Angeles, San Francisco.

#### Editorial Staff:

Editor-in-Chief — Lester Rosen  
Managing Editor — Marge Crum  
Desk Editor — Ted Noel  
Sports Editor — Al Littleton  
Business and Advertising:  
Manager — Elmo Reiff  
Assistant — Gene Dagle

At W. U.

## SCOTT VAN WORMER

### Smokes CHESTERFIELDS

VAN says—

"I smoke Chesterfields because they really give me that smooth, slow burning satisfying taste."

"VOTED TOPS! - - Chesterfield the largest selling cigarette in America's colleges—(by nationwide survey)."



Reprinted from the February, 1948 issue of ESQUIRE

Copyright 1948 by Esquire, Inc.

## It Is Later Than You Think, Final Exams Begin On Monday

CLASSES	EXAM. DAY	EXAM. TIME
<b>8:00-8:50—First Period Classes</b>		
3, 4, or 5 hour M T W T F	Mon., Jan. 19	8:00-10:50
2 hour M W F	Mon., Jan. 19	8:00-9:50
1 hour M W F	Mon., Jan. 19	10:00-10:50
3 hour T T S	Thu., Jan. 22	7:00-9:50
1 hour Th S	Thu., Jan. 22	8:00-8:50
2 hour T T	Thu., Jan. 22	8:00-9:50
1 hour T T	Thu., Jan. 22	8:00-8:50
<b>9:00-9:50—Second Period Classes</b>		
3, 4, or 5 hour M T W T F	Wed., Jan. 21	8:00-10:50
2 hour M W F	Wed., Jan. 21	8:00-9:50
1 hour M W F	Wed., Jan. 21	10:00-10:50
3 hour T T S	Tue., Jan. 20	7:00-9:50
2 hour Th S	Tue., Jan. 20	8:00-9:50
2 hour T T	Tue., Jan. 20	8:00-9:50
1 hour T T	Tue., Jan. 20	8:00-8:50
<b>10:00-10:50—Third Period Classes</b>		
3, 4, or 5 hour M T W T F	Fri., Jan. 23	8:00-10:50
2 hour M W F	Fri., Jan. 23	8:00-9:50
1 hour M W F	Fri., Jan. 23	10:00-10:50
3 hour T T S	Sat., Jan. 24	7:00-9:50
2 hour Th S	Sat., Jan. 24	8:00-9:50
2 hour T T	Tue., Jan. 20	12:00-1:50
1 hour T T	Tue., Jan. 20	12:00-12:50
<b>11:00-11:50—Fourth Period Classes</b>		
3, 4, or 5 hour M T W T F	Thu., Jan. 22	10:00-12:50
2 hour M W F	Thu., Jan. 22	10:00-11:50
1 hour M W F	Thu., Jan. 22	12:00-12:50
3 hour T T S	Sat., Jan. 24	10:00-12:50
2 hour Th S	Sat., Jan. 24	10:00-11:50
2 hour T T	Tue., Jan. 20	10:00-11:50
1 hour T T	Tue., Jan. 20	10:00-10:50
<b>12:00-12:50—Fifth Period Classes</b>		
3, 4, or 5 hour M T W T F	Mon., Jan. 19	11:00-1:50
2 hour M W F	Mon., Jan. 19	11:00-12:50
1 hour M W F	Mon., Jan. 19	1:00-1:50
2 hour T T	Thu., Jan. 22	1:00-2:50
1 hour T T	Thu., Jan. 22	1:00-1:50
<b>1:00-1:50—Sixth Period Classes</b>		
3, 4, or 5 hour M T W T F	Fri., Jan. 23	11:00-1:50
2 hour M W F	Fri., Jan. 23	11:00-12:50
1 hour M W F	Fri., Jan. 23	1:00-1:50
2 hour T T	Tue., Jan. 20	2:00-3:50
1 hour T T	Tue., Jan. 20	2:00-2:50
<b>2:00-2:50—Seventh Period Classes</b>		
3, 4, or 5 hour M T W T F	Wed., Jan. 21	11:00-1:50
2 hour M W F	Wed., Jan. 21	11:00-12:50
1 hour M W F	Wed., Jan. 21	2:00-2:50
2 hour T T	Thu., Jan. 22	3:00-4:50
1 hour T T	Thu., Jan. 22	3:00-3:50
<b>3:00-3:50—Eighth Period Classes</b>		
3, 4, or 5 hour M T W T F	Fri., Jan. 23	2:00-4:50
2 hour M W F	Fri., Jan. 23	2:00-3:50
1 hour M W F	Fri., Jan. 23	4:00-4:50
2 hour T T	Mon., Jan. 19	2:00-3:50
1 hour T T	Mon., Jan. 19	2:00-2:50
<b>4:00-4:50—Ninth Period Classes</b>		
3, 4, or 5 hour M T W T F	Wed., Jan. 21	2:00-4:50
2 hour M W F	Wed., Jan. 21	2:00-3:50
1 hour M W F	Wed., Jan. 21	4:00-4:50
2 hour T T	Tue., Jan. 20	4:00-5:50
1 hour T T	Tue., Jan. 20	4:00-4:50
<b>5:00-5:50—Tenth Period Classes</b>		
2 hour M W	Wed., Jan. 21	5:00-6:50
2 or 1 hour T T	Thu., Jan. 22	5:00-6:50

#### EVENING CLASSES

Examinations for this group of classes should be given during the week of January 15-24. If the class meets for a sufficient length of time for the examination, it should be given during the last period the class meets. If there is not sufficient time available in the last period, the last two periods should be used; but in no case must any examination be longer than 3 hours for a 3, 4, or 5 hour course, 2 hours for a 2 semester hour course, and 1 hour for a 1 semester hour course.

## Seven Countries, 40 States Are Homes of 3,032 Students

University students evidently don't believe in the well-known phrase, "East is east and west is west and ne'er the t'wain shall meet," for east and west have met right here at this municipal institution.

Figures released by the registrar's office Tuesday reveal that the 3,032 students here hail from 40 different states including Kansas and seven different foreign nations.

Wichita students lead the list with 1,633 enrolled that graduated from local high schools. There are 929 students from 256 other Kansas towns.

Oklahoma is also well-represented by 111 students whose homes are in 76 different Sooner cities. Missouri students rank second on the out-of-state list with 83 enrollees hailing from 45 different cities.

A total of 510 students from other states help make up the largest student body in the university's history.

Additional states represented include Alabama, Arkansas, California, Colorado, Connecticut, District of Columbia, Florida, Georgia, Idaho, Illinois, Indiana, Iowa, Kentucky, Louisiana, Maryland, Massachusetts, Michigan, Minnesota, Mississippi, Montana, Nebraska, New Jersey, New Mexico, New York, Ohio, Oregon, and Pennsylvania.

## Psychology, Public Speaking Rated Best By Businessmen

TOLEDO, O.—(I.P.)—America's business leaders of today want their employees well trained in human relations and public speaking, according to a recent national poll by Donald S. Parks, professor of personnel management at the University of Toledo.

56 national and 28 local businessmen ranked the subjects of psychology and public speaking over all other courses for college men expecting to enter any phase of personnel work. The 84 executives ranked courses in personnel management, economics, labor legislation and labor problems behind the two leaders.

Most of the businessmen preferred college graduates, according to the poll, and almost all stressed previous experience in many varied jobs before going into the personnel field. Some of the executives maintained that techniques can be learned quickly and that a broad, liberal arts program is best.

## Carl Barrier

International Sterling SILVER SERVICE



Prelude... in the solid silver with beauty that lives forever.

What charming, what marvelously beautiful tables you will set with this exquisitely flowered design carried out not only in the tableware but in the serving and decorative pieces as well.



THE JEWELER OF WICHITA

Flowers can say "get well soon", at the same time they provide an oasis of color and bring freshness of Spring. Let us help you select the bouquet that will add living beauty to your kind wishes.

145 N. Main 3-8211 **Muellers FLOWERS** Hillcrest Shop 6-6636  
Finest Flowers in Town

# Noel Coward's Comedy Hit 'Blithe Spirit' To Open Season

A smash comedy hit of both the New York and London stages, "Blithe Spirit," by Noel Coward will open the University Players' 1948 dramatic season, announced George D. Wilner, professor of dramatic art.

The now-famous actor, Clifton Webb, played the title roll of Charles Condomine on the New York stage.

The play has been praised by critics as one of the funniest in recent years. According to the New York Journal-American it is "as cockeyed as any play can be and still stay on the stage."

Charles Condomine is an English author who is writing a book on spiritualism. He asks a medium to perform a seance so that he can get first hand material. During the seance his dead wife, Elvira, comes in, in spirit form, to try to take him back to heaven with her.

She plots to kill him but instead kills his second wife, Ruth. She, to, returns in spirit form and the

two spirits make life for Charles one sad incident after another.

Jack Campbell, a newcomer to the varsity stage plays the role of Charles. The roles of the two wives are taken by Anita Faye Lallement and Gladys Johnson.

Others in the cast include Barbara Dunlap, Joy Redfield, Gloria Whitaker, and Don Synolds.

The play is being directed by Mary Jane Woodard, instructor in speech and will be given on the evenings of Jan. 29, 30, and 31 in the University Auditorium.

Aesculapius, honorary science fraternity, will meet tonight at 7:30 o'clock, in 117 Science Building to elect second semester officers.

## Mike Rogues To Hold Meeting on Jan. 23

Mike Rogues, campus radio club, will meet at 4 p.m., Friday, January 23, according to Don Williams, head of the radio department. Anyone interested in doing radio work during second semester is invited to attend, Williams said.

## WU Forced By Finals To Cancel Schedule, Says Don Williams

"Station WU will be forced to close shop during final and enrollment weeks because of conflicting schedules," Don Williams, head of the radio department, has announced.

"We hope to maintain our present schedule as a basis for second semester programming even though many staff members will have class changes," Williams added.

Radio station WU plans to add two more hours to the present schedule according to Williams.

## Corrine Nuchols Starts Drive To Aid Handicapped Grad

A one-woman campaign to help a handicapped graduate student obtain his Master's degree was launched today by Corrine Nuchols, sophomore home economics major. She plans to form a group of students to give secretarial help to Clyde Berger, librarian of the Institute of Logopedics.

"I am told there are at least as many persons handicapped by cerebral palsy as there are by infantile paralysis," Miss Nuchols said. "As a group, they probably are the most neglected of all handicapped people. Many of them are confined in insane asylums despite the fact that they have minds as good as anyone's. I have read the finished portion of Clyde's thesis.

"It will be invaluable creating a more enlightened attitude toward cerebral palsied and other handicapped persons.

"Clyde is brilliant," Miss Nuchols said, "but his physical condition makes the typing a tremendous problem. It takes him about an hour to type every page. I think there are plenty of people who could spare two or three hours a week to help him out. I'll give

what time I can and keep a schedule for other folks to work if they will get in touch with me."

Berger, who obtained his A.B. in 1943, is making a study of public reaction to handicapped persons for his Master's thesis. The material he is assembling will be of special value to professional people working in this field. He is particularly interested in the problem of cerebral palsied (spastic) persons, of whom he is one.

"Clyde's affliction extends to his speech," Miss Nuchols said, "but he can speak more rapidly than he can write. It would help him a lot if some one would take his dictation and then type it. He speaks slowly enough to take it in long-hand. Anyone interested in this matter may contact Corrine Nuchols in the home economics department."

"Scientific Method applied to study of psychology," was the topic of discussion at a round table meeting of members of the University staff and the Wichita Guidance Center staff, a Community Chest agency, 7:30 p. m. Jan. 13, at the Wichita Guidance Center, 3422 East Douglas.

# Gramophone Shop



Good News! Good News!

The latest M-G-M release on records. Recorded directly from the sound track of the M-G-M technicolor musical opening at the Orpheum Theater, Jan. 15.

The Album Contains —

- |               |                              |
|---------------|------------------------------|
| Lucky In Love | Pass That Peace Pipe         |
| Ladies' Man   | The Varsity Drag             |
| Good News     | The French Lesson            |
| Just Imagine  | Best Things In Life Are Free |

The first five people purchasing the "Good News" album will receive two free tickets to this wonderful movie.

The Finest Home Furnishing Stores in the Southwest

MAKE HOWSE YOUR RECORD HEADQUARTERS



Douglas & Emporia

Phone 3-1294

GIVE MUSIC  
206 E. Douglas  
Since 1909

# Bennett's

Largest Record Stock In Wichita

"Dear Diary: Now I know he's really interested! He took me to dinner at Droll's today!"

## Droll's

English Grill

On Central Near Hillside



It's THE *New* **Damask Rose** *daring dramatic*

**SOLID SILVER**  
Carved deep and high as a cameo! To see this sterling pattern is to love it... to want it for all your tomorrows.

5-Piece Place Setting as Illustrated \$24.75  
(Teaspoon, Dinner Knife, Dinner Fork, Salad Fork and Iced Teaspoon)  
Federal Tax Included

**Heirloom Sterling**  
FROM GENERATION TO GENERATION

See the **STARTING SERVICE FOR FOUR \$99.00**  
\*Trade-mark Federal Tax Included

Geo. STAIRS Co.  
JEWELERS  
R. G. POLLOCK, Mngr.  
319 E. Douglas

Anytime You're Hungry, Just Drop In.

We feature expert preparation of Quality foods for you and your friends.

**MACCO'S LUNCH**  
211 N. Broadway

**WANT TO EARN \$9000 A YEAR?**

A career in life insurance selling can be both profitable and satisfying... with your income limited only by your own efforts. Many of our representatives earn \$4,000 to \$9,000 a year, and more! We invite you to send for our scientific Aptitude Test, which measures your qualifications for this interesting work.

After taking the test, you'll hear from our manager in or near your community. If you qualify, he'll explain our 3-year on-the-job training course, with a special compensation plan to help you become established. After that, the Mutual Lifetime Plan offers liberal commissions, and substantial retirement income at 65. Mail the coupon today!

**THE MUTUAL LIFE INSURANCE COMPANY OF NEW YORK**  
34 Nassau Street New York 5, N. Y. Alexander E. Patterson President

FIRST IN AMERICA

PLEASE SEND APTITUDE TEST

NAME \_\_\_\_\_  
ADDRESS \_\_\_\_\_  
CITY \_\_\_\_\_

# SHOCKERS PLAY SIXTH HOME TILT SATURDAY

## Cage Squad Seeks First Valley Win

### Tulsa Hurricanes and Emporia State Hornets Oppose Shocker Five

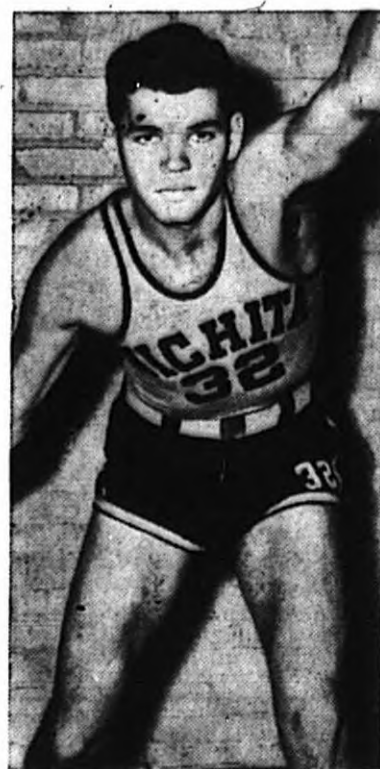
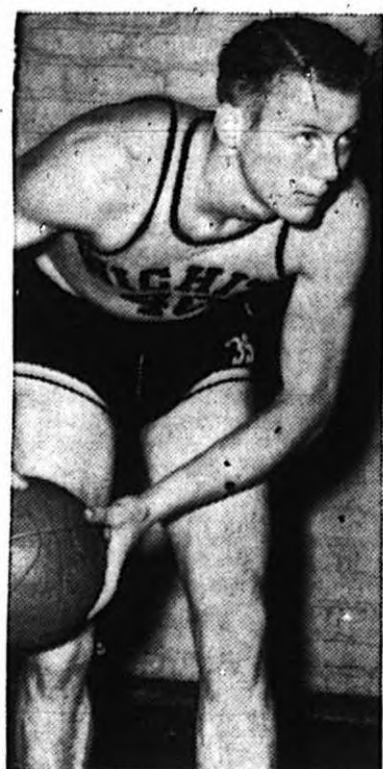
Seeking their first Missouri Valley victory in three starts, the University of Wichita cagers battle the Tulsa Golden Hurricanes at 8:30 p. m. Saturday in the Forum.

Tulsa lost its opening Valley contest last week, dropping a 49-25 decision to the high-flying Oklahoma A. & M. Cowboys.

Gerald Carrens, six feet three inch Hurricane forward is the big gun of the Tulsa squad this season with 77 points scored in six games. Guard Clyde Chronister and forward Gene Johnson are also scoring threats to the Shocker defenses.

Emporia State will attempt to gain its first win over the Shockers Saturday, Jan. 24, when the two schools meet for the third time this season. Wichita won both previous contests, by 42-37 and 52-35 scores.

Jumping back into league competition, the Shockers will take to the road Monday, Jan. 26, to face the Oklahoma A. & M. cagers at Stillwater, and then journey to Tulsa for a return engagement with the Golden Hurricanes the following night.



TWO SHOCKER CAGE STARS slated to see action Saturday night in the Forum are Joe Krafels and Walt Knocke. Krafels, a six feet 1 inch former marine, is a letterman and was fifth leading scorer of last year's squad with 62 points made in 25 games. Knocke, star end on the Shocker grid squad, is now rounding into shape and will give the Tulsa frosh plenty of trouble in the preliminary game. Knocke is pictured at left.

No amendments to the U. S. constitution became effective during the administration of Abraham Lincoln. The thirteenth amendment, prohibiting slavery, was not ratified until eight months after his death.

At W. U.

## CLIFF GILLENWATER

Smokes CHESTERFIELDS

CLIFF says—

"I smoke Chesterfields because of their soothing taste and their satisfying flavor."

"VOTED TOPS! - - Chesterfield the largest selling cigarette in America's colleges—(by nationwide survey)."

FAMOUS FOR **STEAKS**  
FOUNTAIN SERVICE  
Super Deluxe  
**CONTINENTAL GRILLS**  
505 E. CENTRAL  
505 E. BOWLING  
505 N. BROADWAY  
715 E. CENTRAL

### Typewriters

Bought Sold  
Rented Repaired

**BUSINESS EQUIPMENT COMPANY**

Call 2-7439 — 132 N. Market

## Writing Needs

Your personality is reflected . . . in the way you write—the stationery you use. That's why it's so important to select an easy-writing pen and stationery that's suited for you!



Yes!

Valentine's Day will soon be here. For Your Valentines, visit the store with the largest selection of Valentines in Wichita.

Pen and Pencil Sets  
Writing Tablets  
Automatic Pencils  
Stationery Gift Boxes



- Parker
- Sheaffer
- Eversharp

Party Napkins  
By Paper Art

Personalized with Greek letters or your name

Drawing Supplies

Complete Drawing Sets  
Including Instruments,  
Triangles and T-Squares

# ORR'S COLLEGE HILL BOOKSTORE

2226 E. Douglas

## Cage Frosh Meets Tulsa

Undefeated University freshmen cagers, fighting for their ninth straight victory, will battle the Tulsa Golden Hurricane reserve squad at 6:30 p.m. Saturday in the Forum as a preliminary to the varsity event.

The frosh, coached by Ted Warren and student assistant "Tuffy" Robinson, have scored a total of 436 points in eight contests for a 54 point-per-game average. Opponents have been able to rack up only 256 points for an average of 32 points per game.

Out of the 12 men now on the squad, Maurice Meade, Bill Schofield, and Bob Cather rate among the top scorers of the team. But some of the new additions such as

Walt Knocke, Bob Darnell, and Jimmy Nutter are proving to be real scoring threats.

Last year the freshmen won 17 and dropped 6, losing their final game to the "Oklahoma Pan-handlers" in the regional A.A.U. tournament in Denver. The frosh will probably enter the state A.A.U. tourney here again this year.

The remaining games this season will bring up such standout teams as the Okla. A. and M. freshmen, Southwestern College "B", and the Buhler Millers.

On Jan. 22, the Frosh will journey to Newton to play a city-league team in a benefit contest for the March of Dimes Campaign.

Officers Blouse  
Wool Shirt — Pants  
Tux—Size 38 Slim

Ted Foulston, Jr. — 3-7798

## Treat Yourself To Food With Finest Flavor

Try one of our home-style dinners, and you'll agree that our chef knows how to bring out the flavor of foods just as you like it. We have an excellent a la carte menu from which you can pick your favorite snack.



THE FIRESIDE INN

2721 E. Central

## Bostonian's new concept in footwear



# Strato-Moc

Heavy? yes — but extremely flexible — that's the story of the brogue sole of the Bostonian Strato-Moc in burnished mahogany ....14.85

Henry's  
WICHITA

# RAISIN BOWL BATTLE HIGHLIGHTS SEMESTER

## Cage Squad Loses Twice

Mel Binford's University of Wichita cage squad opened Missouri Valley basketball play with two losses last week in the Forum. This gives them a season record of eight wins and three losses.

The Shocker quintet dropped their first league game to the Drake Bulldogs 43-41, in a rough game Thursday. Drake played without the services of their six feet nine inch star, John Pritchard.

In a hard fought game with the Creighton University Bluejays, Saturday, Wichita lost its second league contest by a 40-30 score. The game was featured by rough tactics, bad passing and many fouls by both teams.

## Jim Trimble Attends The Thirteenth Annual Coaches' Convention

Jim Trimble, University of Wichita's newly appointed athletic director and head football coach, attended the thirteenth annual coach of the year dinner while in New York City at the coaches' convention.

Trimble and his colleagues were extended a welcome to New York City by Thomas E. Dewey, Governor of New York, and William O'Dwyer, mayor of New York City.

At the dinner, which honored H. Orrin Crisler of Michigan as the "Coach of the Year", Trimble was treated to an 18 course dinner.

The after dinner speakers were men who are tops in their profession the "hard bun" circuit.

Joe Williams, sports columnist for the Telegram, made the presentation of the Coach of the Year award. Harry Stuhldreher, head coach of the University of Wisconsin, Earl H. (Red) Blaik, head coach United States Military Academy, Alvin "Bo" McMillin, head coach of Indiana University, and Kenneth L. Wilson, Commissioner N.C.A.A. were the speakers.

## Hustler Is High Scorer

Bob Schellenberger, playing for the Hustlers, has highest scoring average for intramural basketball play, tossing in 28 points as his team defeated the Snipers 52 to 25.

Of the 10 games played since the Christmas vacation, the closest contest was between the Phi Sig B and the Webster B, with the Websters winning 28 to 26. Three of the teams in the intramural league have played two games each, the others have been in competition but once.

The Webster A team stands at the head of the loop with two wins, the Webster B squad has one win and one loss, and the Phi Sig B team has two losses.

Results of games played since January 6: Cowpokes "A" 29, Cowpokes "B" 12; Gamma "A" 27, Gamma "B" 21; I.S.A. "A" 25, I.S.A. "B" 11; Phi Sig "A" 30, Phi Sig "B" 22; Webster "A" 60, Webster "B" 35; Hot-Rods 25, Racers 2; Phi Alpha 26, Ramblers 17; Websters "A" 67, I.S.A. "B" 32; Webster "B" 28, Phi Sig "B" 26; Hustlers 52, Snipers 25.

One contest will be played by each team next week. The schedule of games is posted on the Intramural bulletin board.

## Crash! Tumblers Perform At Creighton Game During Half-time

Five members of the University tumbling team gave an exhibition on the trampoline during half-time at the Wichita-Creighton basketball game Saturday at the Forum.

They were Loren Steel, Don Yokeley, Garth Minx, Howard Smith, and Jerry Breth. Breth did some clowning on the trampoline and the unicycle.

It was the third exhibition put on by the tumbling team. The first performance consisted of mat work and the second was balance work.

Other members of the tumbling team are Bill Sira, Ernest Namee, Clyde Birmingham, Bob Van Dyke, Delbert Schmidt, Johnny Hurst, Dale Orth, and Bill Snook.

## Jim Trimble Named New Grid Mentor

### Winning Varsity and Freshmen Cage Teams Boost Shockers' Stock

Linwood Sexton's brilliant running in the upset victory over the St. Louis Billikins, the discovery of Jimmy Nutter, sensational scabbard, the overwhelming 55-7 Homecoming triumph, and the trip to the Raisin Bowl at Fresno, Cal., were a few of the highlights of the 1947-48 fall semester's sport season. Turning back the months we find:

#### SEPTEMBER

Jack Hazlett, star end on last year's grid team, was lost for the season by a pre-season injury. Wichita won the opener over Warrensburg, 33 to 0. Utah State administered our first defeat, 21-6. Nutter gained 258 yards in the first two games to rate high in the nation in rushing.

#### OCTOBER

The high-flying Shockers won four in a row, beating Bradley, 28-7; Drake, 21-13, with the Sexton to Houlik pass combination paving the way; previously unbeaten and untied Abilene Christian, 7-0; and Arizona State, 55-7, in the Homecoming game. Nutter led the nation in rushing for two weeks before an injury forced him out of the Abilene Christian game.

#### NOVEMBER

"We played our best game of the season," stated Tulsa coach Buddy Brothers, after stopping the Shockers, 7-0. St. Louis took the brunt of the Tulsa revenge as the Shockers steamrollered them, 38-6. Miami of Ohio presented one of the classiest football teams ever here in winning 22-7. On Thanksgiving Day the Wichitans polished off a successful grid season by trouncing Colorado College, 62-6. Wichita finished second in the Missouri Valley and had a record of seven wins against three losses. Sexton was named to the All-Missouri first team for the third successive year, and Hodges and Houser for the first time. Houlik and Knopick were placed on the second team, and Schreiner and Nutter were given honorable mention.

#### DECEMBER

Wichita's cage season was opened with (Continued On Page 8)

**Man's Tuxedo**  
Practically New  
Perfect Condition  
Single-Breasted — Size 38  
\$15.00  
121 So. Green — 5-1958

## WEBER DRIVE INN



"The Perfect Snack Spot"

— STEAKS —

Tasty Sandwiches — Fountain Drinks

— Curb Service —

2915 E. Central

Dial 2-0222

EVERETT A. WOOD



### Get Set For Your Favorite Sport

Get set now to challenge anyone to a good game with our top-notch sports equipment. We carry a complete line of equipment for all type of athletes.

#### WARM-UP JACKETS

ELKSKIN, Gabardine Reversible

ELKSKIN, Kasha lines

#### STUDENT DISCOUNT ON WARM-UP JACKETS

#### Basketball Shoes

- CONVERSE "Chuck Taylor" Professional
- B. F. GOODRICH, "P. F."

#### Basketball Shorts

- Scarlet
- Royal

SWEAT SHIRTS, SWEAT PANTS, GYM SHORTS,

ALL WOOL GYM SOCKS

## Sports Crafts Supply, Inc.

"Everything For The Sportsman"

2228 E. Douglas

Dial 2-0038

A snake's poison is never carried in its tongue, often erroneously called its "stinger."

#### Hemmen's

50 Styles of  
RADIO'S

5 Nationally  
Known Brands

#### HEMMEN'S

Superior Appliance Co.  
159 N. B'dwy — 3-5990

**BACK!**



...AND BETTER THAN EVER

### HAMILTON

America's Fine Watch

Yes, these distinguished American watches are once again in stock. To see them is to want one... for yourself or for that special gift occasion.

YOUR NAME  
AND ADDRESS



### RAY GUMM

JEWELER

129 N. Broadway

### Men Track Enthusiasts See Bidwell to Try Out

All men students interested in trying out for the University track team are urged to contact Ab Bidwell, track coach, during the first week of the next semester.

### Intramural Wrestling To Begin Feb. 10

Men interested in participating in the intramural wrestling tournament beginning Feb. 10 must have completed seven workouts, by Feb. 6, under the direction of men selected by the Intramural office.

The number of workouts must be checked off by the Intramural office.

Mrs. W. M. Jardine, wife of the University president, is recovering from a case of pneumonia at home, 1820 North Hillside.

**Steffen's Quality Rich Pak**  
The extra heavy ICE CREAM  
IT'S RICHER • SMOOTHER • CREAMIER • HOMOGENIZED  
35c Pint

**It's Always Good Eating Time Here**

**Brown's Grill**

THE PLACE FOR GOOD EATING

Good food — plenty of variety from which to choose — prompt service — and reasonable prices — that's what you find when you come to Brown's for your meals. Try it! You'll agree, we know.

— Closed Mondays —  
Open 6 a.m. to 10 p.m. Sundays & Weekdays  
545 N. Hillside Phone 2-9246

## Air Cadets Are Needed

A traveling aviation examining team of two men will visit the University Jan. 26-27 for the purpose of interviewing, and examining men eligible and interested in the air force aviation cadet and air officer cadet programs. They will receive applications from anyone currently enrolled in the second, third and fourth year of college.

The teams are authorized to administer all the qualifying examinations necessary to fully qualify an applicant for cadet training, with exception of the physical examination. These tests consist of the written air force qualifying examination to determine aptitude, a physical check list to screen obviously unfit applicants and a character examination.

## New Frosh Are Invited

The University can take care of at least 300 new students next term, President W. M. Jardine said today, and it can be done without jamming classes or reducing teaching efficiency.

Normally, second semester enrollment at all colleges is substantially less than the fall term. A small drop is foreseen by officials here next term for the first time since the war. Some students will be graduated. Several will be forced to drop their college work for economic reasons. A few will flunk out. Of the 3,032 now enrolled, probably about 2,800 will reenroll for the second semester.

The president said that for the first time in three years the University is in a position to invite new students, including those from out-of-town. For a while, the school discouraged non-resident enrollments by putting up minimum grade averages in order to hold down the enrollment until faculty, staff and facilities could be assembled to accommodate them.

A full schedule of beginning courses for entering freshmen will be available in all four colleges, the president declared, with the school doing all it can to help the married student get squared away on his housing.

The second term starts Jan. 30.

## Registration Opens Jan. 27 On Campus

Second semester registration will begin in the women's gym on Tuesday, Jan. 27 and continue through Jan. 29 according to Dr. Worth A. Fletcher, registrar.

Students are urged to follow the following schedule:

Juniors, seniors, and graduates will enroll Tuesday, Jan. 27.

8-10 a.m.: Names beginning with letters M through Z.

10-12 a.m.: Names beginning with letters A through L.

1-3 p.m.: Sophomores whose last names begin with letters L through R.

3-5 p.m.: Sophomores with names beginning with letters S through Z.

Sophomores and freshmen will enroll Wednesday, Jan. 28.

8-10 a.m.: Names beginning with letters A through D.

10-12 a.m.: Names beginning with letters E through K.

1-3 p.m.: Freshmen whose last names begin with letters S through Z.

3-5 p.m.: Freshmen whose last names begin with letters L through R.

Freshmen and late enrollees will enroll Thursday, Jan. 29.

8-10 a.m.: Names beginning with letters E through K.

10-12 a.m.: Names beginning with letters A through D.

1-3 p.m.: Late enrollees.

Saturday noon is the final date of pre-registration for second semester classes. Students, who have not completed tentative schedules, are urged to contact their counselors before the deadline. Second semester registration will begin Jan. 27 and continue through Jan. 29. Classes will open Friday, Jan. 30.

## Jim Trimble

(Continued From Page 7)

wins over Culver-Stockton, 47-35, and Emporia State, 42-27. Baylor copped a 52-43 win to hand the Shockers their initial loss. The

racial ban was finally lifted in the Missouri Valley. Raisin Bowl officials at Fresno engaged the Shocker grid machine for a New Years Day game with the College of Pacific. The Wichita basketball team took an overtime battle with Culver-Stockton, 45-43, and trampled Warrensburg 46-40. Ralph Graham

resigned as athletic director to take the head football coach's position at Kansas State. Jim Trimble was selected to replace Graham here.

JANUARY

Wichita lost the Raisin Bowl tilt, 26-14. The Shocker cagemen won the Emporia in-

vitational tournament with victories over Colorado Mines, 67-33, Miami of Ohio, 58-41, and Emporia State, 52-35. Drake and Creighton both took conference wins over the Shockers, 43-41, and 40-30. The Freshman team, last year's Kansas state champion, are undefeated in eight games.

"You can count  
on Chesterfield's  
ABC's to give you  
a grand smoke"

*Loretta Young*

LORETTA YOUNG

COSTARS IN SAMUEL GOLDWYN'S

NEW PICTURE

"THE BISHOP'S WIFE"



*It takes ABC TO SATISFY*

*When you change to Chesterfield*  
THE FIRST THING YOU WILL  
NOTICE IS THEIR MILDNESS  
*...that's because of their Right Combination*  
World's Best Tobaccos

**A ALWAYS MILDER**  
**B BETTER TASTING**  
**C COOLER SMOKING**

**ALWAYS BUY CHESTERFIELD**  
*They Satisfy*