

THE SUNFLOWER

Vol. XLX, No. 5

University of Wichita, Wichita, Kansas

October 26, 1944

Chest Drive Is On Today

Students Seek \$764

Contributions to the Community War Chest drive are being collected in class rooms today by members of the Student Council committee in charge of the University drive, according to Phyllis Duncan, chairman.

The Chest drive booth in the Administration building will also remain open today to receive donations from those not reached in class rooms.

Roy Elliott, comptroller, is in charge of the faculty drive. Student Council members comprising the student committee include: Robert Helsel, Joan Cooke, Billie Jean Luce, and Eleanor Eaton.

The University is cooperating with the Wichita Community War Chest, which is seeking a goal of \$513,152.07 by November 1. Cash results of the University effort will be tabulated at the close of today.

University Faculty To Act As Chairman

Three University of Wichita teachers will act as chairmen of meetings of the Kansas State Teachers Association, November 2, 3, and 4.

Dr. T. Reese Marsh will preside as chairman of "The Fine Arts in the American College"; Dean Earl K. Hillbrand will act as chairman for the Adult Round Table meeting and Jacquetta Downing will be chairman for the modern language group. Teachers from the University who will speak to different groups are: Clayton H. Staples, Dr. L. W. Mayberry, Dr. Worth A. Fletcher, Dr. Martin F. Palmer, Dr. P. S. Albright, Mrs. Edna Mullen-dore, and Mrs. Virgil L. Barritt.

Of interest also are the University graduates who will participate in the meeting. Among the teachers and business men are: Dorothy Eberhardt, Wichita; Barbara Clason, Canton; Margaret Coleman, Wichita East; Mildred Netzel, Wichita; Bentley Barnabas, Wichita and Guy Gebhardt, Wichita.

Poetry Contest Open To Students

National Poetry Association announces November 5 as the closing date for the submission of manuscripts for the annual anthology of college poetry.

Each poem must be typed or written on one side of a single sheet, and must carry the following statement: "The verse entitled '.....' is my own personal effort."

The address of the Association is 3210 Silby Avenue, Los Angeles, California.

There are no entry fees or charges.

Kappa Delta Pi Pledges Women

Kappa Delta Pi, national honorary education fraternity, has pledged the following girls, according to Betty Judy Wright, president: Clendolyn Bailey, Georgia Banks, Gladys Ewell, Ruth Holloway, and Jeanette Evans.

At the first meeting of the year, W. A. Bonwell, principal of Hamilton Intermediate School, showed films and discussed advantages of visual education.

Men who are interested in dramatics are needed says Prof. George D. Wilner, head of the dramatics department. Anyone who can take part should see Professor Wilner at once. "According to present indications this year's dramatic productions will probably have all-girl casts," said Professor Wilner.

Rita Jo Lyman was elected intramural manager and Phyllis Duncan, recorder of points, in a W. R. A. board meeting held last Thursday, according to Ann McLean, president. Schedule of games for soccer tournament will be announced soon, and horseshoe tournaments will be initiated, Miss McLean announced.

W.U. Students Find Harry James, Top Five-Man In U. S., Really Hep!

"That boy's cookin' right—really hep," was the comment of one University student as he heard Harry James, top five-man here Thursday night. That's the kind of praise Harry James says he likes, for he likes to see college students respond to his music. "They act as if it's part of them, and that's what a band leader wants in an audience."

Many disappointed College Joes found that Betty Grable, Mr. James' pin-up-able blond wife, had stayed at home to care for the baby, Vicky. "She'll probably be on my next tour," the band leader said in an interview with a Sunflower reporter.

The band had just finished an

engagement at Ft. Worth and Dallas, Tex. before coming to Wichita. Mr. James was born in Beaumont, Tex., and this is the first time in the six years that he has had his band that he has played in his home state.

Mr. James will start a new picture, "Trumpet Man," when he returns to Hollywood after he has finished this tour. "They've been trying to cook up a picture for Betty and me together," he said, "but when everyone knows we're married, that doesn't strike me as having a chance at being romantic."

As a freshman boy commented, "With Harry James or without, him, under any circumstances, Betty Grable would be romantic."

Foundation Seeks Head Lab Has \$400,000 In Sight

Officials of the Foundation for Industrial Research are seeking a capable director to head the proposed laboratory, as the drive to procure \$500,000 continues.

It was reported that \$400,000 is in sight, with \$250,000 in the bank. All the initial committee members who organized the drive are working and are confident.

Roy W. Elliott, comptroller, asserted that the organizational work is under way, and some action in selecting a director may be expected soon. He said that William M. Jardine, University president, is looking for "an outstanding scientific director" to be in charge of the laboratory.

Interest in the laboratory is at least statewide. Elliott said that requests have come in for the research laboratory to make several market studies for this area.

It is expected that a large share of the quota being sought for establishment of the new organization will come toward the end of the year when business and industrial firms compile their fiscal finances.

The drive is under the direction of Murray F. Gill, president of the Kansas Gas and Electric company. The laboratory was proposed by Beech Aircraft corporation and Cessna Aircraft corporation, each of which contributed \$100,000 toward its establishment.

Hear One-Act Play And Music in Convo

Convocation this week was presented by the music and dramatics departments.

The Girls' Glee Club appeared for the first time this year at the convocation. They sang "Prayer" from "Hansel and Gretel," and a Fred Waring arrangement of "Beautiful Lady." Alma Ruth Funk is accompanist for the group.

Patricia Mather and Betty Hodge of the dramatics department presented a one-act play, "Overtones."

Community singing was led by Mr. Harold Decker, voice instructor. The University orchestra, under the direction of Prof. Louis K. Zerbe, provided accompaniment.

Organizations Hold Alumnae Receptions

Alumnae of the various sororities on the campus will be entertained at the sorority houses on Homecoming Day, Saturday, Nov. 4, according to the presidents of the various organizations.

Alpha Tau Sigma and Pi Kappa Psi will have their houses open during the day to returning alumnae. Sorosis will entertain alumnae at a luncheon, and Delta Omega, Kappa Rho and I. S. A. will hold open houses and spreads.

Materials are being ordered to erect a kiln in the basement of Morrison Hall so that a course in pottery might be taught second semester. Prof. John Strange of the art department, is an expert in this field, and will have the supervision of building the kiln and teaching of the subject.

Enrollment Totals 745 Women Outnumber Men 2-1

Seven hundred forty-five students are enrolled in the University, according to official enrollment figures released today from the Registrar's office. Of this number 580 are Wichitans and 165 are from other cities.

Women outnumber men only a little over 2 to 1, there being 505 women and 240 men. In the spring of last year the women outnumbered the men three to one.

The College of Liberal Arts and Sciences has the largest enrollment by a large majority. There are 422 enrolled in this college, and 229 are freshmen.

Men far outnumber the women in the College of Business Administration. There are 95 men enrolled and only 28 women. The College Education came close to being second in enrollment with 107 enrolled.

The College of Fine Arts has a large enrollment of freshmen and sophomores. There are 43 freshmen, 33 sophomores, and a total of 93 enrolled.

Freshmen number 372 which is exactly half of the total enrollment. There are 174 sophomores, 81 juniors, 73 seniors, 32 specials, 2 unclassified, and 11 post graduates enrolled for this semester.

Band Broadcasts At W.U.-Doane Game

The University Band under the direction of Walter Duerksen, broadcast a short musical program over station KANS, at the half of the Wichita-Doane football game Saturday. The program consisted of two numbers, "Begin the Beguine," and "Stout Hearted Men."

The next public appearance of the band will be at the Kansas State Game on November 4.

Band members are planning a picnic to be held at Fairmount Park on November 17, and a dance following, to be held in the Commons.

More band members are needed and are invited to join the band at this time. The band meets every Monday and Wednesday evenings from 6:00 to 7:30 in the Auditorium. It offers one hour credit. Mr. Duerksen announces that replacements are always needed in the band for those going into the armed forces.

Downing P. O'Harra, librarian, spoke on "Book Selection Policies" at the annual meeting of the Kansas Library Association in Topeka. Mr. Downing addressed the college and university library sectional meeting of the convention Saturday. The association voted to meet in Wichita at next year's convention.

Dr. Forest L. Whan will take part in two panel discussions at the sixth annual Regional Convention of Association for Education by Radio, to be held at Stephens College in Columbia, Mo., through November 16-18. The discussions include "Radio Councils" and "Promotional Programs for Education." Dr. Whan is president of this region which includes seven states.

Homecoming Celebration Plans Promise Two Days Festivities

Homecoming Queen Candidates Are Ablah, Deupree, Purnell, McCoy, Holloway, Mader

Plans for the Homecoming celebration November 3 and 4, include a pep rally, varsity, and football game, according to Mickey McCoy, chairman of the Student Council committee.

A Roundup theme will be used

Scholarships Are Offered

Two new scholarships to Ohio State University, one paying \$1,400, and the other \$3,000 annually, and the Kellogg Foundation Scholarship are open to students attending the University of Wichita, according to information received by Dean L. Hekhuis.

Two of the grants are in science fields. The Muellhaupt Scholarship to Ohio State University pays \$1,400 to \$1,800 to biologists who have recently completed the requirements for Ph. D. degree or who have training equivalent to this degree. The Kellogg Foundation Scholarship pays an amount not to exceed \$200 and a loan not to exceed \$200 to students in the field of medical technology.

The highest scholarship to the Ohio State University, the Elizabeth Clay Howald grant, pays \$3,000 annually to a student showing proficiency in any field of learning.

At least seven fellowships to the university are open to graduate students. Most of these amount to about \$750 annually.

Students interested may obtain details of procedure to follow in procuring either fellowships or scholarships from Dr. Hugo Wall, head of political department, or Dr. Clinton C. McDonald, head of botany and bacteriology department.

Madrigal Group Gives Program

The University madrigal group will present a program at the Rural and Third Class City School Departmental Meeting to be held in the Webster School auditorium on Friday, November 3, at 2:00 p. m. Harold A. Decker, head of the voice department announced.

The program of four songs will include "Now is the Month of Maying" by Morley; "Which is the Properest Day to Sing" by Dr. Arne; "The Dark Eyed Sailor," arranged by R. Vaughn Williams and "In These Delightful Pleasant Groves" by Purcell.

The madrigal group is a recent organization and is under the direction of Mr. Decker.

Dr. Clinton C. McDonald, director of Health Education at the University, spoke last week at the regional conference of the Kansas Tuberculosis and Health Association. His topic was "Health Education—Our Basic Principle." Part of the work of the conference was to outline plans for the sale of tuberculosis Christmas seals, said Dr. McDonald.

Students Drink Gallons of Cokes Tuesday, Thursday, Third Hour

On any Tuesday or Thursday at 9:45, in the University Commons the students consume approximately 50 cokes, 35 cups of coffee, 15 malts, 20 glasses of orange juice and 10 sandwiches.

Why anyone wants sandwiches at such an early hour has been puzzling everyone. It seems that when the confusion becomes most intense, students lose their sense of time, eat their lunches, and wonder why they are hungry all afternoon.

Everyone is free this hour and everyone is determined to get to the Commons. Standing room is all that is required, as books, cigarettes, and drinks can be managed even in a standing position.

and students will wear plaid shirts and other appropriate cowboy regalia during the festivities.

Candidates for Homecoming queen are: Lucille Ablah, Delta Omega; Norma Deupree, Kappa Rho; Mary Jane Mader, Pi Kaps; Ruth Holloway, I. S. A.; Mickey McCoy, Alpha Tau; and Marjorie Purnell, Sorosis.

Election of the queen will be held from 8 a. m. until 1:30 p. m. Tuesday in the Commons Lounge. Only first choice will count on a ballot, instead of first, second, and third choices, as was the former custom. Results of the election will be announced next week. The five remaining candidates will serve the queen as attendants.

The activities for Friday evening, Nov. 3 will include a pep rally and bonfire, said Miss McCoy.

After the supper in the gym a two-hour mixer will be held. Then a snake dance will be led from the Women's Gym to the field across the street from the Administration Building, where festivities will begin.

Songs and yells will be led by the cheerleaders and the band, and the football team will be presented. Customary Homecoming costumes of cowboy theme will be worn by the students.

Ending the rally will be the Kansas State dummy.

The Homecoming game against Kansas State will start at 2:30 p. m., Nov. 4. During the half the queen will be presented. The University band, which will be dressed in cowboy costume, will play throughout the game.

Alumnae of the University and Kansas State College will be entertained at a coffee in the Commons Lounge directly following the game, according to Walter Duerksen, chairman of the affair. All faculty members, students, alumnae of both universities, and guests are invited to attend.

The varsity, Saturday evening, Nov. 4 from 9 to 12 o'clock, will climax the Homecoming activities, according to Charles Chaffin, chairman of the Varsity Committee.

I.S.A. Still Holds Bond Sale Lead

I. S. A. still holds the lead in the bond sales with \$180.90 to its credit. Kappa Rho's have taken over second place with \$45.60. Pi Kaps are now in third position with \$28.85, and Alpha Taus place fourth with \$16.25.

The Rectangle had charge of the booth yesterday, but its sales have not yet been recorded.

The bond thermometer is now up in the Administration building and will soon show the progress of the sales.

Delta Omega will be in charge of the bond booth next week.

Prof. Clayton B. Staples, head of the art department, will speak to Dr. Onsgard's Ancient Near East history class, at 9:50, Tuesday, October 31, on the Egyptian civilization. Professor Staples will tell of his travels through Egypt and display his own paintings.

THE SUNFLOWER

Vol. XLX, No 5 Thursday, October 26, 1944



Published each Thursday morning during the school year by students in the department of Journalism of the University of Wichita. Entered as second class matter, September 24, 1916, at the postoffice at Wichita, Kansas, under the act of March 2, 1879.

The Sunflower is one of the oldest student publications in the state of Kansas, having been founded in 1896. It is a member of the Associated College Press, publishers of the Collegiate Digest. Subscription by mail in the United States is \$1.50 per school year. Advertising rates furnished upon request. Address The Sunflower, University of Wichita, Wichita, Kansas, or phone 3-8635.

Editor-in-chief Ruth Holloway
Managing Editor Joan O'Bryant
Desk Editor Reba Holloway
Society Editor Mary Lou Hobson
Sports Editor Bill Nelligan
Business Manager Curtis Winters

A Dime Will Act For You

"Surely you can spare a dime for 100 worthy needs!" This campaign slogan introduces the 1945 drive of the Community-War Chest which opened Monday all over Wichita, and is being held today on the campus.

Wichitans and students are being asked to raise a \$513,152.07 quota this year for the War Chest. Besides the local agencies that all Wichitans know, there are some 22 national agencies which are represented by the War Chest. A \$10 donation will give a dime to 100 needs, both local and national, and even a dime may help some child, in Kansas or maybe in Greece.

None of us can do all the acts of charity that we would like. A donation to the local Community-War Chest will act for you, here and abroad.

Surely you can spare a dime for 100 worthy needs!

Do You "Bum" Cigarets?

Have you a cigaret? This is probably the most familiar question of the day to the University students. They are greeted with it when they enter the Commons, as they leave classes, or almost any place they chance to be.

The recent cigaret shortage has familiarized every smoker with the fact that now the greatest percentage of American cigarets are being shipped overseas to the boys in service. The larger share of the public is accepting this situation with some good old American "griping" but it is only characteristic of this country. Most are only too glad to cooperate in order that the boys overseas receive their "smokes."

University students too, do their small share of "griping" but accept the cigaret shortage in good fun and merely try to beat the next person out of the last pack at the nearest store. But as in anything else, there are always a few unwilling to cooperate in trying to cope with a situation.

These persons are the ones who probably never made a habit of smoking only when up in the Commons with a crowd in which the greater percentage were smoking. Persons like this never have a cigaret of their own but will always take one when offered by someone else. Then there are the smokers who are "trying to quit but would like just one more before quitting for good."

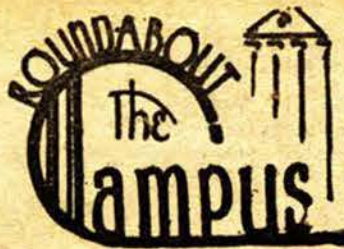
And last but not least are the smokers who will bum one, look at the brand, and then complain because the brand is not nationally advertised or is not the particular brand that they are used to smoking. This is the ultimate of the ultimates of cig "bummers."

If everyone would cooperate by purchasing and smoking his own cigarettes, or at least repay the one from whom they borrow, it would alleviate the shortage. Also, the least the chronic cig borrower could do would be to refrain from insulting the one from whom they borrow by not complaining about the brand.

Bill Olden, the most popular man on the campus, wants everyone to know that he is only 59, instead of 70, as was listed last week.

Betty Dickman, better known among her loud group of friends as "Dog Eyes" wants to know when somebody will throw her a bone. Beverly Brooks wants to know when somebody will throw her Dr. Davis . . .

Overheard on the campus this week was this quip from Dean L. Hekhuis who says, "Horse sense is that level-headedness which keeps a horse from betting on the human race."



Mary Lou watching you—

Hear that Bill Cochran and "the fellows" planned a "party" for Betty and Lyle Sturdy the other night in the way of surprises—and whose idea was the short-sheeted bed?

Jack Crane says the Alpha Tau pledge pin he's wearing is just until he gets an active pin, and he's passing chocolates next Wednesday.

Those 5 o'clock shadows that the fellows don't seem to do anything about, are planned, we hear—they're getting ready for Homecoming. We're not so sure about Sonny Raffman's mustache, though. Could be he wanted to make Harry James feel at home.

It seems that the Pi Kap dance last week end was a big success, what with yellow and white corsages for the pledges and a pin (an active pin with a pledge pin for a guard) for Dr. Branch, their sponsor.

Swell to see the girls home from Boulder—Mary Lois Pence and Jean Finney, now Chi O's, and Margaret Walling, who pledged Theta.

Overheard in the Rotunda—Girl (looking at ad of jazz review)—Is that the Dr. Davis who teaches English?

Other girl—Yes, guess so.
Girl—Well, my gosh, I have to listen to him all week.

Hear that the Pi Kap actives kept Tiny Stevenson busy dancing with them at Harry James—while Pledge Dustin held their purses and kept an eye on her date—Tiny.

And, if you're interested in captains, ask Martha Brennan who the one was that she met on a Saturday night.

Question the co-eds are asking—Do the frat pledges really mean for girls to buy those stag tickets for their dance tomorrow night?

Dr. Whan was really cutting loose at Harry James the other night—provoing to his daughter that he's definitely not a "square", we'd guess. And the general opinion is that that kind of rug cutting isn't square, either.

What is that "FG-ASC"? All we seem to be sure of is that it's coming.

Did you see Roddy MacIvor, Jack Mayor, Gene Mills, and Marshall Fryer back on the campus?

More news next week after the gang going to K. C. this week end get back, and until then—so long.

Helen Shaw has been causing quite a stir in the Commons lately with her fortune telling. University students seem to go in for the deep and dark in quite a big way. But what did she tell Jack Bell that he's keeping such a deep secret? And did it take a palm-reading to tell that Les Hatfield is a flirt from way back? Jerry Baumgardner says she's going to learn to tell fortunes, because it would be such a nice simple way of getting to hold people's hands. Whose hands, Jerry

Have you noticed the way the sorority pledges are flocking over to the Varsity lately? The actives seem to be over there too. It's either the power of suggestion or the flavor of the cokes, but we're not sure which.

Have You A Cold? ---Then Try This

Do you feel run-down, have the "sniffles," cough until you embarrass yourself in class? If so, you are no different from many other students on the University campus.

Recent surveys show that 60 out of 100 University students are troubled by some manifestation of the common cold. Symptoms range from red nose and watery eyes to a "hanging-on cough" that suspiciously resembles a smoker's "Hack."

Remedies suggested by students also vary widely. Many suggest several days in bed as an excellent way to get over a cold, and incidentally, catch up on one's sleep. Others swear by aspirin. Still others rub their chests and backs every night with the vaporous rub that "penetrates and stimulates." One school athlete says the quickest cure for a head cold is to stand on your head and vocalize rapidly for several minutes.

For more serious-minded students, perhaps the suggestion of Dr. E. J. Wolfe, city physician, will be more useful. He says that a liquid diet for several days along with plenty of rest will cure any common cold.

Pledges To Honor Actives At Carnival

Pi Kappa Psi pledges are honoring the actives tonight at a Halloween carnival to be held in the home on Leenda Andeel, the pledge president. Games and side shows will last from 6:30 to 8:30.

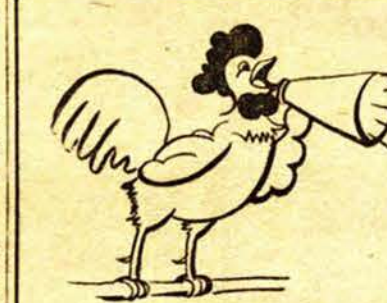
The committee in charge of the affair and all the pledges have been busy getting the recreation room decorated, and the games and side shows in order. The committee includes Charlene Parrott, Phyllis Hedrick, Betty Ann Brush, and Mary Lou Nash.

**IT'S COMING
NOVEMBER 10**

**Southern Kansas
Lines Appreciates
YOUR
Patronage**
— Depot At Hotel Eaton —

FG-ASC

There is
no doubt
when you
have your
picture
taken at
LARSON'S



**Somethin' - - - To
Crow About**
Our **CHILBURGERS**
and **CHILIDOGS**
h-m — so tasty,
so delicious!

... at ...
THE VARSITY
Where Good Food Means Good Health —
Chili "The Best" Sandwiches "Most Delicious" Fountain Drinks "The Finest"

***** * Typed on a Wednesday * * By Joan O'Bryant * *****



O'Bryant

Not long ago a V-mail letter turned up in the Sunflower office from Fred Higginson, ex-Sunflower columnist who originated "Typed On A Wednesday." Somewhere, somehow, Higginson had gotten a copy of Dr. Earle Davis' latest book, "An American In Sicily," and the letter expressed his views on the book. Dr. Davis urged the staff to publish the letter, and wrote the following preface to it:

"The Sunflower staff was hesitant about printing Mr. Higginson's views on my book, apparently under a rule known as "Be kind to the faculty." I think the campus might be interested, since I have always admired Mr. Higginson's views on everything, even when he is wrong." Now follows the Higginson letter:

"In April, 1944, when Doc Davis ripped the last sheet of "An American in Sicily" from his typewriter, he was waiting for an invasion which came off finally in June, almost 11 months after Gela. I know he was waiting for it; he will possibly give us a book about it. "An American in Italy" next, then "An American in France." Considering global warfare, Dr. Davis should be able to keep busy writing poems.

"It was hard to envision the Doc, with his record collection, ("Do You Know Good Music?"), his pipe ("Do You Know a Good Pipe Mixture?"), and his sport coat ("Do You Know a Good Tailor?"), writing a poem about Sicily. He dedicates it to the officers and men who fought in Sicily. From their accounts, news reports, rumors, and imagination, he has pieced together a coherent narrative. It is a difficult task. The OWI, however, is sometimes disparate with reality.

For example: The Navy has "corpsmen;" the Army's counterparts are "medics." Also: You don't take morphine by mouth (p.42); GI is a syrette, hypodermic.

"But these are really trivial points, to be charged off to the Snafu column.

"More serious is the question of food in the combat areas: Corned beef, biscuits, jam, and margarine (p.77), as well as steaks, potatoes, green beans, onions, lettuce and pie (p.94). No mention of the tedium of K-rations; only one mention of C-rations (and glamorized at that: biscuits, beef, and beans). You have no heating units; fires make smoke, so you eat them cold, with the grease caked on top. Water is short, your lips are dry; the grease sticks to your lips. That's how it is, Dr. Davis.

"And what the soldier thinks. 'You might suppose the soldier thinks of little but battle, women and getting home some day. Never believe it.' Do believe it, Dr. Davis. Believe George Biddle, who has been there.

"The soldier thinks some interesting things about Ezra Pound too. He speaks over the radio to the troops in Sicily. He has a cracked, tired voice, this poet in exile. He slyly utters propaganda to corrupt morale, this traitor-American. But soldiers do not listen to Ezra Pound, Dr. Davis. Berlin Betty is on the air at the same time and she plays Dinah Shore records. Or perhaps it is Bob Hope, who is funnier of course, less witty too, but soldiers do not appreciate wit.

"Wit is too much like war; both three-letter words requiring concentration. In war, you hate, fight, feel, attempt, crush, die—all in a moment—and forget.

"You do not worry about spotting your uniform (p.101) and you do not run around trying to send cables (p.127).

"Dr. Davis, an American in England (recently of Normandy (Sicily, North Africa, and Italy), is asking you: Do you know a true war story? Or are you too De-voto-ed (p.98) to communicating (p.37) second hand?

"Note: It shouldn't be hard to get a copy; I'll bet they're on sale in the Rotunda."

When that
Occasion arises —

... give Flowers
... nothing else can
say more.

145 N. Main Hillcrest
3-8211 4-1397

Muellers
FLOWERS

I.S.A. Dance Is Friday

"Voodoo Revel" Is Mixer Theme

Independent Students Association will sponsor its annual Halloween dance, the "Voodoo Revel," tomorrow evening at 8:15 in the Commons Lounge. The event is the monthly mixer for October and is a no-date affair.

The committee for the dance includes Wylia Ann McQuillen and Reba Holloway, co-chairman, and Margaret Cate, Charlotte Schneider, and Martin Young.

Members of Aesculapius fraternity will be conducted on a tour through the St. Joseph Hospital tonight at 7:30, according to Emily Cross, president.

Prominent W.U. Couples Wed

Mr. and Mrs. Louis J. Ely announce the marriage of their daughter, Betty, to Ensign Lyle Sturdy, son of Mr. and Mrs. O. R. Sturdy, of Hugoton, Kans. The vows were read by Rev. Lewis M. Hale, Friday at the First Baptist Church.

Miss Ely was attended by Miss Helen Hege as maid of honor, and Miss Kathryn Krehbiel as bridesmaid. Mr. Herschel Grier served Ensign Sturdy as best man.

Miss Ely is a graduate of East high school and was a senior at the University, where she was president of Student Council, Sorosis sorority, and Wheaties. Ensign Sturdy is a graduate of Hugoton high school and the University, where he was a member of Phi Sig. He recently returned from service in the South Pacific.

Mr. and Mrs. Fred R. Page an-

nounce the marriage of their daughter, Pauline, to Lt. E. J. Howse, Jr., son of Mr. and Mrs. E. J. Howse. The wedding took place Friday.

Miss Page is a graduate of North high school and attended the University, where she was a member of Alpha Tau Sigma sorority, and was best pledge of her class. Lt. Howse graduated from East high school and was attending the University when he entered the service. He was a member of Men of Webster. Lt. Howse is now stationed in San Luis Obispo, Cal. The wedding was solemnized in California.

D.O. Pledges Are Honored

"Stairway To Stars" To Be Theme

Delta Omega Sorority will honor its pledges at a dance at the Shirkmere Hotel at 9:00 Friday night, according to Ruth Hancock, chairman of the affair. A theme, "Stairway to the Stars," will be carried out in blue and silver decorations. Virgil Chamber's orchestra will play at the dance. Jo Anne Rutherford, Cleda Belle Ross, and Ruth MacCormick are other members of the committee.

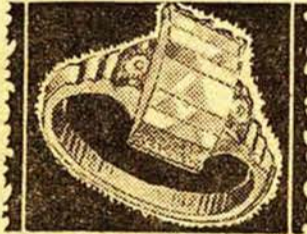
Guests include:

- | | |
|--------------------|---------------------|
| Lucille Ablah | Lewis Corzine |
| Anna Mae Amstutz | Burns Faught |
| Phyllis Barrett | Conrad Manion |
| Jeneva Brewer | Lt. Lyle Amundson |
| Dorothea Brown | Bill Ketchersid |
| Roberta Brown | G. D. Carpenter |
| Bettiann Cole | Bill Peterson |
| Ruth Hancock | Jack Jansen |
| Ruth MacCormick | Robert Levy |
| Dorothy Ransom | Dick Straw |
| Mahgretha Riddel | Bob Shuart |
| Marjorie Ryan | Larry McMannis |
| Cleda Belle Ross | Charles Chaffin |
| Jo Anne Rutherford | Brent Archer |
| Leona Sowards | Paul Mitchell |
| Imogene Springer | Elwood Bell |
| Pat Suhm | Bill Johnson |
| Dolly Wallace | Eldon Case |
| Irene Weigand | Bob Keller |
| Shirley Braman | Ensign Claude Evans |
| Delores Adams | Bud Harris |
| Lila Broderick | Bill Yeager |
| Irene Beller | Deuayne Pritchard |
| Barbara Brooks | J. S. Gwinn |
| Virginia Brown | Kenny Rogers |
| Patricia Hitt | Junior Mercer |
| Betty Hodge | Bob Skillman |
| Bernice Kauffman | George Carey |
| Marianne Marshall | Gene Walling |
| Jeanne Rittenoure | J. O. Smith |
| Bernice Shustorman | Wiley Campbell |
| Darlene Timken | George Rocque |
| Pauline Turney | Dale Patrick |
| Barbara Williams | Lt. Tommy O'Keilly |
| Marion Meyer | Bill Isley |

Dr. William Mikesell, formerly head of the department of psychology, is now stationed at the Denver induction center in Colorado, where he is in charge of clinical interviews of inductees. In a letter received by Dr. Gordon Hanson, assistant professor of education, Captain Mikesell said that he was called to a Chicago Conference by the Army War Department. Out of the 20 attending psychologists, two were from Wichita.

Come To Us
For A
DISTINCTIVE AND
CLEVER LINE
... of ...

Costume Jewelry



Winters' Jewelers
and WATCHMAKERS
120 North Broadway

PHOTOGRAPHY IS FUN



Bring Your
Halloween
Pictures
to Us for
Finishing

LAWRENCE PHOTO
149 N. BROADWAY
"CAMERA HEADQUARTERS"

First Varsity of The Year

for

Homecoming Week

Come out and
show the Alumni
that our spirit
is alive.



Bring your date
and
swing out for
this occasion
that comes but
once a year.



A good time
to be had
by all ...
Don't be sorry
you passed
this one up.



Support this
Varsity so
we might
have more
of them.



Music by Russell Lowe's

KFH STAFF ORCHESTRA

CHAS. CHAFFIN, Varsity Committee Chmn.

SATURDAY NIGHT — NOV. 4th

HENRION GYM

ADMISSION — 75c COUPLE

STAGS, \$1.00

OBSERVERS, 50c



MAN
POWER
FOR
YOUR
WARDROBE



GENUINE
Alpagora
THE COAT WITH THE
DOUBLE-DENSE* FABRIC

You'll love it for its authentic man-tailored lines... deceptively casual air that only top-flight makers of men's coats can achieve. Superb stamina fabric in grand checks and tweeds. Colorful mixtures and fleeces... sizes 9 to 20.
\$32.50

Hinkel's

SINCE 1886 MAIN AND DOUGLAS

Squad Meets Rockhurst In Second Tilt Saturday

Final Score 14-13 Threatened In Last Minute Touchdown By Doane Team

The Shocker squad will travel to Kansas City day after tomorrow to engage the Rockhurst College team after triumphing over the Doane Navy team Saturday, 14 to 13, in their second home game, before some 4,000 fans.

Coach Binford announced this week that he had been able to schedule an Armistice Day game here with the McCook Bombers, of McCook, Neb., an Army air field team. This game will follow on the heels of the long awaited Homecoming game, November 4, with Kansas State. The Shockers and the Wildcats played a 6-6 tie earlier in the season at Manhattan.

"Religious Imagery In The Poetry of Richard Crashaw," was the thesis title chosen by Sister Mary Vincentia Greenawalt, candidate from the department of English for a degree of master of arts who completed her oral examination Saturday, before the examining committee. According to the committee, Sister Vincentia has written one of the finest thesis ever to be completed here. She received her B.A. degree in 1938, and is now teaching at Cathedral High School. Faculty members on this committee are: Dr. Earle R. Davis, Dr. T. Reese Marsh, Dr. Robert Mood, Dr. Geraldine Hammond, Dean L. Hekhuis, and Dean Earl K. Hillbrand.

STARTING LINEUPS

Shockers	Pos.	Doane
Mason	LT	Merryman
Bell	LT	Heubner
Stevenson	LG	Hanson
Snodgrass	C	Flake
Overstake	RG	Davidson
Watts	RT	Davis
Coffey	RE	Meyer
Clark	QB	Webber
Sexton	LH	Moore
Hall	RH	Deets
Russell	FB	Dumbald

SUBSTITUTIONS
Shockers—Bretz, Ambler, Heilman, Pillsbury, Knoeke, Maris, Barlow, Corrigan, Casey, and Penfold.
Doane—Clem, Simmons, Oeth, Weed, Dill, Schochdopole, Flake, Matusse, and Jones.

SCORE BY PERIODS

	1	2	3	4	Tl.
Shockers	7	0	7	0	14
Doane	0	0	0	13	13

SUMMARY

	Shockers	Doane
First downs, total	16	10
Yards gained rushing	304	190
Yards gained passing	0	49
Passes attempted	6	6
Passes completed	0	3
Passes intercepted	1	0
Punts made	4	5
Fumbles	4	2
Penalties	3	4
Penalties, Yards	45	40

Holders of season tickets will be admitted to the Armistice Day game by presenting the cover of their season ticket booklet, according to Neal K. Duncan, cashier. Students may attend the game on their activity tickets.

W.U.'s Library Has High Rank

University of Wichita library makes a good showing in relation to the other college and university libraries of the North Central Association in a recent statistical study made by the Association.

The topics forming the basis for the study were book expenditures over a five year period, per student capita expenditures for library staff salaries, titles owned in a basic list of 752 reference books, and periodicals subscribed to in a basic list of 420 titles.

"In relation to all the libraries, both large and small, in the North Central area, the percentile rank of the University of Wichita library was high," said Downing P. O'Harra, librarian. Thus in the item of book expenditures the University of Wichita library had a percentile rank of 89, which means that 88 per cent of all the li-

The Following Is the 1944 Schedule For the Wichita University Shockers:

Date	Team	Place	Score	W. U.	Opp.
Sept. 23	Rockhurst	Wichita	22	0	
Sept. 30	Kansas State College	Manhattan	6	6	
Oct. 7					
Oct. 14	Olathe Naval Air Station	Olathe	0	13	
Oct. 21	Doane College	Wichita	14	13	
Oct. 28	Rockhurst	Kansas City			
Nov. 4	Kansas State College	Wichita			
	(Homecoming)				
Nov. 11	McCook Bombers	McCook			
Nov. 23	Drake University	Wichita			
	(Thanksgiving)				

braries spent less for books than we did."

The North Central Association also placed each institution in a separate group of more or less related institutions and then determined the percentile rank within each group. Group 1 was junior colleges. Group 2 consisted of liberal arts colleges offering the A.B. degree. Group 3 included institutions offering the Masters degree and having three or less schools.

Since University of Wichita has four schools it was placed in Group 4 consisting of universities offering the Ph.D. degree and institutions offering the Masters degree and having four or more schools. In Group 3 the University's percentile ratings would have been much higher, but in Group 4 it is ranked with the best institutions in the North Central territory.

Speaking on "The State Program for Improvement of Education," Dr. Earle R. Davis appeared before the Teachers' Association of Valley Center last evening at a dinner meeting held at Valley Center.

MILLER

New Showing
In Technicolor
"IRISH EYES ARE SMILING"
Monty Woolley - Dick Haymes
June Haver
—Also—
THE MILLER HOUR

ORPHEUM

Starting Friday
"ABROAD WITH TWO YANKS"
Dennis O'Keefe-William Bendix
—Also—
THE ESQUIRE HOUR

Bill Brasfield

says —

"University students are always welcome at my store."

Superior Watch Co.
110 North Topeka

King

VAN LINES

244 North Main — Dial 4-3262

CIVIC

725
W. DOUGLAS


"PRIDE OF THE CITY"

Now Showing Thru Saturday
From The World of Fantasy
A Story about a dancing Caterpillar
Cary Grant and Janet Blair
"ONCE UPON A TIME"
Civic Variety Hour
Cartoon - Sports - Snapshots

Sunday Thru Wednesday
A Story of Love that binds a man and woman darkly together
Charles Boyer - Ingrid Bergman
in
"GASLIGHT"
Civic Variety Hour
All Star Musical

DANCING

Every Nite
BOB WHITE
His Trombone . . . and
His Orchestra
Adm. **75c** Inc. Tax
Only **75c** Week Nites
Dancing Starts at 9 p. m.



Club Lido
3400 West Douglas Bus to Door

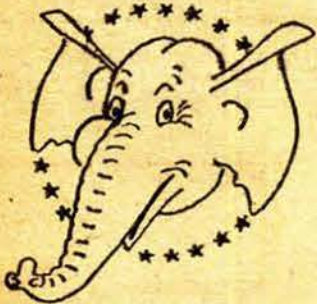
★ ★

Club Lido
3400 West Douglas Bus to Door

★ ★

ERNIE FIELDS
and His Orchestra
Phone 4-6421 for Reservation

REPUBLICAN RALLY



HEAR
Governor
BRICKER



Special Train To Wichita

HEAR HIM
Friday, Oct. 27
ARCADIA
11:45 A. M.

Join the University
Young Republicans Club

Gus Martel

and His
ORCHESTRA

With
★ BONNIE BENSON
★ JOHNNY TAYLOR

Reservations
Phone 6-5413

Try Blue Moon's
Delicious Tender
Steaks . . . and
Chicken Dinners

BLUE MOON

"THE BREEZE SHEET MILLTOP ON SOUTH OLIVER
ACROSS FROM THE MUNICIPAL AIRPORT" - PHONE 6-5413

KNOW YOUR ELECTION CANDIDATES



AND THEN
VOTE
ON NOV. 7



Those candidates with an (X) after their names have paid for this advertisement to familiarize Wichita University students, alumni, and their families with the ballot for the November 7 election. These subscribers are boosters of the University.

STATE GOVERNOR	TREASURER	SHERIFF
Andrew Shoepel, R. ()	J. M. (Jim) Weaver, R. ()	Keith E. Moore, R. (X)
Robert Lemon, D. (X)	Les Turner, D. (X)	Ed Dunn, D. ()
LT.-GOVERNOR	JUDGE DISTRICT COURT	SURVEYOR
Jess Denious, R. ()	Division No. 3	Don C. Moehring, R. ()
James E. Fisher, D. (X)	Clair E. Robb, R. (X)	Clyde M. Baughman, D. (X)
U. S. SENATOR	Lester Wilkinson, D. ()	CLERK DISTRICT COURT
Clyde Reed, R. ()		L. D. (Mike) Leland, R. (X)
Thurman Hill, D. (X)	REPRESENTATIVE	R. R. Richardson, D. ()
U. S. CONGRESSMAN	67th District	COMMISSIONER 2nd Dist.
Ed H. Rees, R. (X)	Dale M. Bryant, R. (X)	E. J. Huston, R. (X)
Bill Kropp, D. (X)	Joseph S. Osborn, D. ()	Charles L. Henry, D. ()
JUDGE DISTRICT COURT	COUNTY CLERK	COMMISSIONER 3rd Dist.
Division No. 1	C. N. Mercer, R. (X)	W. E. Aldridge, R. (X)
Tom Harley, R. (X)	C. W. Jameson, D. ()	Charlie G. Craig, D. ()
Ross McCormick, D. ()	REGISTER OF DEEDS	COUNTY SCHOOL SUPT.
JUDGE DISTRICT COURT	L. F. Burnett, R. (X)	Adel Throckmorton, R. (X)
Division No. 2	Arch E. McVicar, D. (X)	
W. C. Attwater, R. (X)		
Robt. L. NeSmith, D. (X)		