

THE SUNFLOWER

OFFICIAL STUDENT PUBLICATION OF THE UNIVERSITY OF WICHITA

VOL. 44, No. 4 (Z239)

Dial 3-8635
Bris Telephone

WICHITA, KANSAS, THURSDAY, OCTOBER 6, 1938

Mail Edition—4 Pages
Campus Edition—12 Pages

FOUR PAGES

COMMITTEE SELECTIONS ANNOUNCED

Organizations Will Have Ex-Officio Members In New Set-Up

BULLETIN
Stanley Diamond, president of the Student Council, has asked presidents of campus organizations and fraternities to appoint ex-officio members from each of their respective groups to attend Student Council meetings.

The next meeting of the Council will be Monday noon in the Pine Room of the University Commons.

After consideration of applications for committee appointments, members of the Student Council, at their meeting Monday noon, selected a standing varsity committee and three other groups for temporary work.

Lewis Crum, senior and leader of the Barb organization, will have charge of the varsities for the coming year. Mr. Crum has had charge of the varsities staged on the campus this semester.

He will be assisted by Bob Baird, junior, who will serve as vice chairman, and a committee comprised of June Ilgner, Margaret Alexander, Fred Evans, and Carl Auchterlonie.

The appointment of a student activity committee, whose first project will be to agitate for student dormitories, according to Stanley Diamond, president, will be made at a future meeting.

Katherine Israel, senior, and Clark Ahlberg, senior, will work with the alumni in choosing a Homecoming date.

Leaders of the campus pep club, "Whoo," will serve on the pep committee.

Margaret Craig, Walter Tait, Fradene Goldstein, and Mr. Diamond will make plans for the Shocker booster trip.

RIFLE RANGE HAS BEEN RENOVATED FOR R.O.T.C. UNIT

McAllister Perfects New Lighting System For Army Quarters

Several new improvements have been made in the rifle range for the R. O. T. C. A new method of suspending the targets on the target frames has been installed.

The improvement which Maj. Martin D. McAllister has worked on the hardest, however, is the lighting system. It has now been perfected so that there is equal brilliance over the entire range.

The R. O. T. C. freshmen are required to fire on the range this year as part of the course. Sophomore and juniors have to take a review course of instruction before they are permitted to fire on the range. Because the seniors had experience in camp last summer they are not required to take the review course.

There will be a number of rifle meets between our R. O. T. C. and other schools, according to Major McAllister. There will also be competition between classes.

Major McAllister has charge of all rifle marksmanship instruction and his principal instructor is Sergeant E. R. Milke, who has recently been transferred here from the University of Minnesota.

Attendance on the range is voluntary, except for the freshmen, who are required to take the new course.

WEST IS ADDED TO W.U. FACULTY

Wichita Minister Teaches Course in Ethics

Rev. Samuel West of the St. James Episcopal Church is conducting the course in ethics for the department of religious education and philosophy, which meets at 8 a. m. on Tuesday and Thursday mornings.

"This is one step in our attempt to enlarge the scope of the department," Dr. L. Hekhuis, head of the department said.

Dr. Hekhuis indicated that the department hopes to offer courses led by other visiting ministers in the future. Rev. West will conduct the ethics class throughout the duration of this semester.

HENRION IS ELECTED PRESIDENT OF GRADS

Paul Henrion, class of '38, was elected president of the Alumni Association at a meeting held in the Henrion Gymnasium last May 30. The meeting was presided over by Mrs. E. M. Leach, retiring president of the association.

Other officers elected were: Dene Heskett, vice president; Mary Carlock, secretary; and Vane Smith, treasurer. Kathleen Robertson was elected for the new member of the executive committee.



Heads Barbs

Lewis Crum was reelected Tuesday night to the presidency of the campus Barb organization. He was also recently named by the Student Council as head of the University varsity committee.

PLANS FOR NEW BUILDINGS TO BE COMPLETED SOON

Construction on Library Scheduled to Start On Nov. 28

University building plans are progressing steadily according to Roy Elliott bursar, who stated early this week that architects are working day and night on the new library and president's home.

"We hope to have construction of the library begun on Nov. 28," Mr. Elliott said. "Bids probably will be let Nov. 18 or 19."

The office hoped to gain an extension of time on the library plans, but the architects will have them completed on Oct. 17, the date specified by the district WPA office at Ft. Worth.

Mr. Elliott said that plans for the president's home will go south this week, but stressed that all building activity here necessarily depends on the approval of the Ft. Worth office.

The school had previously expected to begin the library in January; however, the Public Works Administration is attempting to speed up their work in general.

Preliminary drawings for the new library to be constructed north of the Administration Building disclose a beautiful building of colonial style with two floors and a basement. It was revealed this week by Downing P. O'Hara, librarian.

Although architects are still working on the final drafts, Mr. O'Hara, who had possession of the original drawings, gave a graphic summary of the layout of the building this week.

"There will be two floors and a basement," he explained. "The first floor will, however, be the main center of activity. Two reading

(Continued on Page 4 Column 3)

WALL BACK FROM EMPORIA MEETING

Political Science Head Goes To NYA Conference

A meeting of representatives of all the colleges and junior colleges of the state of Kansas met in Emporia last Thursday for the purpose of organizing the forces of the state for planning of future moves, Dr. Hugo Wall, University delegate, reported this week.

Approximately 80 colleges were represented at the convention, the first of its kind to take place in this section.

"It is hoped that NYA work can be made to function more smoothly through the joint cooperation of all those interested," declared Dr. Wall. "Projects can be carried out with the knowledge others help to supply."

Although there was no definite provision made for another meeting next year, the local representative said that he was reasonably certain they would continue.



Leads Band

Something new for Walter Duerksen's R. O. T. C. Band will be the inauguration of its "Swing Session" to be played during the half at the Wichita-St. Louis football game next Saturday night in the Shocker Stadium.

The band, which now numbers 87 and which is the largest in the history of the school, will play such numbers as "Crazy Rhythm," "Some of These Days," "St. Louis Blues," and "Tiger Rag."

After the "Swing Session," the band will play "Hail Wichita."

PARNASSUS SUB-EDITORS ARE NAMED

Tennant Gets Associate Editorship While 11 Others Placed

Selections of eleven editorial and special staff members for the 1939 Parnassus, with Dorothy Tennant appointed to the top position as associate editor, were passed by the Board of Publications at a meeting late last week, according to Sam Smith, Parnassus editor-in-chief.

Others chosen for staff positions are as follows: Marjorie Gray, organizations editor; Mary Lou Stratton, fraternity editor; Mary Evelyn Brincefield, sorority editor; Catherine Dedrick, women's sports editor; Bob Campbell, men's sports editor; Maxine Pantier, picture and art editor; Douglas Nunn, military editor; Kenneth Marts, cartoonist; Jerry Rogers, photographer; and Betty Jane Roberts, special features editor.

Ad Directory Is To Be Out Today

Free copies of Parnassus' new "Wheatshooter Directory—On and Off the Campus," printed with school colors, showing the entire campus from a humorous point of view, are available at the rotunda in the Administration Building at a table on the east, it was announced by Sam Smith, editor, and Fradene Goldstein, business manager.

"Names of advertisers in previous editions of the annual are listed in classified order along the side edges of the large drawing," Miss Goldstein explained. "Students are asked to patronize these supporters of the University."

The drawing, which was sketched by Kenneth Marts, staff cartoonist, is meant to furnish a good wall decoration for the college students' room.

CRUM REELECTED AS PRESIDENT OF NON-GREEKS HERE

Stanton, Coleman, McNeil Are Named for High Barb Offices

Lewis Crum, senior, was unanimously elected to head the Barb organization at a meeting of more than 150 non-Greeks Tuesday night in the University Commons Lounge.

Recently elected by the Student Council to head the varsity committee of the University, Mr. Crum is a member of Blue Key, men's national honorary fraternity, and is a leader in the Y. M. C. A.

Other officers elected by the Barb group are Morris Stanton, junior, vice president; Myrabel McNeil, sophomore, secretary; and Grace Coleman, freshman, treasurer.

A membership drive was launched by Barb officials, which was received with "heartiest support from all those present," according to the non-Greek head.

Membership cards were issued in return for voluntary contributions. Such cards will be issued to any non-Greek wishing to become actively affiliated with the Barb organization, Mr. Crum said.

UNIVERSITY HOST TO STATE PRESS

Allman to Address Editors Here on Saturday

Delegates to the fifth district meeting of the Kansas Press Association that convenes at the Hotel Lassen Saturday morning, Oct. 8, will be guests of the University of Wichita and the journalism department at the St. Louis football game here Saturday evening.

An annual golf tournament will be held in the morning to be followed by a luncheon meeting in the Lassen. Leo W. Allman, head of the journalism department, will be the principal speaker. His subject will be, "Europe's Crazy Quilt," in which he will summarize the elements that have figured so prominently in European recently.

Approximately 100 persons, editors and their wives, will be present. Ralph Baker, secretary and field manager of the state association, is also expected to attend. Five counties: McPherson, Sumner, Harvey, Butler, and Sedgwick will be represented.

Officers of the association are: Phil Sterling, editor of the Canyon Pilot, president; S. E. Kaiser, editor of the Douglas Tribune, vice president; George A. Vennberg, editor of the Clearwater News, secretary.

SIPPLE AND FAMILY MOVE INTO NEW HOME

Dean Leslie B. Sipple head of the Department of Education, has moved into a new home which he purchased last summer.

Dean Sipple and his family formerly lived at 814 Carter. Their new residence is situated at 3223 East First Street.

Professors Speculate On European Situation

Rydjord and Wall Say Minority Problem Is Biggest In Old World Affairs Today

By Sam Smith
WITH the immediate danger of a European war past Dr. John Rydjord and Dr. Hugo Wall, heads of the history and political science departments respectively, like the rest of the world, have as yet no exciting predictions on the future of the Old World.

"The minority problem is the big problem in Europe today," declared Dr. Rydjord, close observer of world affairs. "Rumania, Yugoslavia, Austria, Hungary, and other small nations besides Czechoslovakia have minorities which prove troublesome."

Balkans Will Be Next
If pressure is brought to bear upon these minorities, he continued, there is a likelihood of strife. "Germany, I believe," Dr. Rydjord stated further, "will attempt to gain economic advantages in the Balkans. She will try to make each small nation a satellite to the German nation."

Dr. Hugo Wall, the political science expert, also believes that the victorious Germany will wield a powerful hand in the Balkan Peninsula. As for the general plight of Europe; although undecided in his convictions, he is extremely skeptical of lasting peace.

Russia Plays Part
Both men attribute Soviet Russia with an important part in the future of Europe. National socialism through dictatorship or Communism would probably result in nations participating in another war, they say.

Japan is another cog in the wheel of international intrigue. A disturbing question that Dr. Wall feels must be answered before a comprehensive view of the situation can be given is: How can the colonial claims of Japan be satisfied?

Japan Might Be Fused
"The quickest way to bring America to war," said Dr. Rydjord, is to place Japan in a European war."

Returning to the German question, he pointed out that Hitler has been backed by a group of munitions manufacturers. Among these, ironically enough, is said to be the giant Skoda plant of Czechoslovakia.

The question of prime importance today, seen by governmentalist Dr. Wall, is whether Germany actually will be content with the Sudetenland territory she now possesses.

FIRST AFTERNOON MIXER IS TODAY AT NOON IN GYM

Sullivan To Play at Noon Dance Sponsored by School Council

Today, at noon, the first mixer of the year will be held in Henrion Gymnasium with Albert Sullivan's Collegians furnishing the music, according to Stanley Diamond, president of the Student Council.

There will be no admission cost, Mr. Diamond said. Arrangements will be made by Lewis Crum, varsity chairman of the council, and his newly-appointed committee, which includes Bob Branson, June Ilgner, Margaret Alexander, Bob Baird, Fred Evans, and Carl Auchterlonie.

The mixer is the first of the series scheduled for the year by the council. The second one has been calendared for Friday, Nov. 2, at the noon hour.

HUGHES TO TALK AT OPEN SESSION

Manhattan Chemist Speaks For Delta Epsilon

"Food For Thought," is the title of an illustrated lecture which will be given by Dr. J. S. Hughes, professor of chemistry at Manhattan, to the members of Delta Epsilon, science fraternity, at a meeting to be held today, Oct. 6, in Room 207 Science Hall at 3:30 o'clock.

Dr. Hazel Branch, head of the zoology department and president of Delta Epsilon, has stated that the meeting is open to all students and faculty members of the University.

Dr. Hughes is widely known in this section of the country for his lectures and work in biological sciences. His talk this afternoon, illustrated with two sets of slides, will be, according to Dr. Branch, of special interest to those students enrolled in chemistry, biology, and home economics.

The meeting will be the first held this semester. There will be a short business session following Dr. Hughes' lecture.

University Has Unusual Religious Endowments

Only Municipal School in Country Boasting Endowed Chair of Religion Is Wichita

ONLY one municipal university in the United States can boast an endowed chair of religion—the University of Wichita. And the professor who teaches all but one class of the 42 hours of religious education and philosophy offered, is Dean L. Hekhuis, who also serves as head of the College of Liberal Arts.

In the year 1926 the Congregational Board decided to set aside \$75,000, the income from which was to be used for the furtherance of Christian education at this school. Later the amount was raised to \$86,000 and it now stands at this figure.

Many Funds Available
The money was derived from endowments made to the University with this purpose in mind. The Ransom Foundation for Religious Education is the largest single one, and was to her husband, and amounts to \$75,000.

Emily Butler left, by will, the sum of \$10,000 to Fairmount College for use in the religious education department. The Louise J. Byington Foundation of \$1,000 was established in 1930, with the stipulation that it be used for the furtherance of Christian education.

Since the fund's income was made available for use, there have been

PEP, MUSIC CONVOCATION 10:20 FRIDAY

College of Fine Arts Will Sponsor All-Student Program Here

BULLETIN
A meeting of the men of the freshman class will be held immediately following convocation tomorrow in the auditorium. The meeting was called by Dwight McKahney, president, who urges that all freshmen boys attend.

Singing and pep displays will be featured in the convocation to start at 10:20 a. m. tomorrow, according to plans of Dean Thurlow Lieurance, of the College of Fine Arts, which will sponsor the program.

One hundred chairs will be placed on the stage to seat the college's glee clubs and other singing groups. The entire Shocker football squad will sit in the center section of the Auditorium.

Band to Play
The large R. O. T. C. Band will play during the rally. Cheer leaders will take charge between songs and other entertainment.

Students will be furnished with song sheets and James Barrett, new instructor in voice, and Dean Lieurance will lead group singing. University songs, with special emphasis on "Hail Wichita," will be sung. "The Old Gray Mare" and similar "ballads" will be on the program.

Greeks May Sing
Fraternity and sorority members are warned by Dean Lieurance that at a songfest soon they may be asked to sing their organization songs.

This comes as the second all-school convocation of the year. Last week, through the efforts of Robert Howse, manager of the Johnston-Edinger Company, Herbie Kay and his band were presented in an hour program on Thursday, and on Friday, parts of "Soaring High."

Stage show here in conjunction with the Kansas Harvest Festival, were presented for those who wished to attend.

STUDENT FORUM COMMITTEES ARE BEING APPOINTED

Ahlberg Announces List of Members; Posts Still Open

Announcement of a partial list of Student Forum committee appointments was made this week by Clark Ahlberg, executive secretary. Interested students, according to Mr. Ahlberg, may still apply for committee work.

Sidney Martin, treasurer, is chairman of the financial committee. He will be assisted by Jeanne Lewis.

Henry Amsden will have charge of the downtown ticket sale. His co-workers will include Margaret Alexander and Georgeann Anderson.

Fradene Goldstein will handle publicity features. She will be assisted by Doug Nunn.

Jeanne Carr will head the program committee. Her assistants have not yet been appointed.

NEW ROOMS FOR STUDENT ACTORS

New Make-Up Quarters In Commons Now

University actors and actresses will have the opportunity of dressing and making up in the most modern and best-equipped dressing rooms in the city this year. For the stage and make-up rooms in the Commons Building are now complete.

Several unique features are to be found in the new dressing rooms, such as overhead mirror lights that enable the actor to make up under the same lights that he will be under while on the stage. The new accommodations will take care of 25 persons. The lockers, to take care of valuables during the play, will be checked before each performance.

There are enough lockers so that every person in the cast will have one.

Storage room, which before has been scarce, is plentiful in the new make-up lockers and storage closets. The new rooms will be comfortably furnished with overstuffed chairs and small throw rugs.

HEDGES GETS ARTICLE PRINTED IN MAGAZINE

To appear in a forthcoming issue of Coronet magazine is an article, "I Was a Spastic," written by Thaddeus Hedges, University senior and member of the research department of the Flo Brown Memorial Laboratory for speech correction.

Mrs. Avis D. Carlson, Wichita writer, collaborated with Miss Hedges in producing the article.



Plans Trip

Stanley Diamond, president of the Student Council, is making plans for the Shocker booster trip to the Washburn game at Topeka.

FRESHMEN TAKE READING LESSONS SIEVERS OFFERS

Over 70 Students Will Enter Special Class Beginning Now

Over 70 freshmen have requested the privilege of the psychology department's course designed to improve comprehension and speed in reading. It was revealed this week by Dr. Clement Sievers of the department. They will attend "class" twice a week, on Tuesdays and Thursdays at 10 or 11 a. m. or 1 p. m.

Interested persons inspected equipment and methods to be used the first three days of this week. Dr. Sievers explained the system to be used and informed them that they could take advantage of the opportunity offered.

Tests were taken and where symptoms of visual difficulties were apparent, the students were told, and advised to visit an eye specialist. Actual study will begin on Thursday of this week in Room 427 of the Administration Building.

Three photographs are taken of each student's eyes during the course of the two-week period which is required to actually help reading. One is taken before study begins; the second is taken after the ninth lesson; and the third after the 18th or final lesson.

The methods of study are based upon eye movement, outlining, concentration, and vocabulary study, according to Dr. Sievers. Training in selecting the main idea from a paragraph will also be given.

Students who have failed to apply for entrance to the class as yet and who are interested in the course should see Dr. Sievers as soon as possible.

HILLBRAND WILL DIRECT MEETING

Extension Division Head Is Chairman of Panel

Dean Earl K. Hillbrand, of the University Extension Division, has been asked by Evan E. Evans, superintendent of public schools at Winfield, Kan., to act as chairman of the public forum meeting to be held Friday evening, Oct. 7, in conjunction with the second annual Secondary Education Clinic sponsored by the Board of Education of Winfield.

Featured on the program are Dr. Roy Ivan Johnson, director of division of skills and techniques at Stephens College, Columbia, Mo., and Dr. Walter E. Myer, leader in the field of secondary education and editor of the publications of the Civic Education Association.

Dean Hillbrand spoke last Monday at a meeting of the Gridiron Club in the Hotel Lassen on "What Is the Truth About Women."

REPUBLICAN CLUB DEBATES TONIGHT

Four University Students To Orate in Meet

Four University students have entered the oratorical contest sponsored by the National Young Republicans Club, the eliminations for which will be held this evening, according to Doug Gleason, president of the University Republican Club.

University Republican Club members competing in the eliminations tonight are Margaret Craig, Walter Tait, Paul Mason, and Bob Baird.

The county organization of the national body has charge of the local meet, and winners of the local meet will then appear at a district meet. District winners will compete in the state meet, and winners of that will in turn go to the national meet, Mr. Gleason said.

FIRESTONE TO TAKE ILLINOIS PASTORATE

Jesse Firestone, graduate of last year, this week will assume the pastorate of the Ingleside, Ill., Methodist Church and at the same time will enter Garrett Theological Seminary, Evanston, Ill., according to word received by Dr. L. Hekhuis, dean of the College of Liberal Arts.

Enrolled in the department of religious education under Dr. Hekhuis, Mr. Firestone worked his way through the municipal school here as a commercial artist and as pastor of the Rose Hill Methodist Church.

NEW PLANS ON BOOSTER TREK MADE

Air-Conditioned Train Will Carry W. U. Students To Topeka Tilt

Tentative plans are being formulated by a Student Council committee for a Shocker booster trip to Washburn, Friday, Oct. 21, according to Stanley Diamond, president.

The present plans, which first must be submitted to the student activity committee, headed by Dean Leslie B. Sipple, for approval, calls for a special chartered train. The train will leave Wichita Friday at 2 p. m. and arrive in Topeka in time for dinner. The return trip will be made following a varsity at Washburn.

150 Students Must Sign Round-trip tickets for the air-conditioned streamliner will sell for \$4.20.

Negotiations, according to Mr. Diamond, are being made for a reduced ticket rate to the Shockers for the football contest. The price should not exceed 60 cents, he said.

"The booster trip will be made only if 150 students sign up for the journey," said Mr. Diamond. "A table will be placed at the first floor of the Administration Building where students may designate their intention of going. All interested students," he continued, "must sign the book not later than Monday, Oct. 17."

Concession on Train
Present plans also include the establishment of a student concession stand on the train where ice cream and candy will be sold.

This will be the only booster trip scheduled for the year. Previous successful trips induced the council to include the planned trip in the year's schedule.

Council members working on the proposed trip include Walter Tait, Margaret Craig, Fradene Goldstein, and Mr. Diamond.

TYLER IS NAMED FOR PRESIDENCY OF FRENCH CLUB

West, Hartman, Durbin, Bartlett Get Other Major Offices

LeTresa Tyler was elected to the presidency of the Cercle Francais, French Club, at a meeting held in the Pi Kappa Psi house Monday evening, Oct. 3.

Miss Tyler, a pledge of Pi Kappa Psi sorority and a sophomore in the College of Liberal Arts, replaces Ruth Elizabeth Hinman, who is now attending the University of Missouri.

Other officers elected to head the French group are Jane West, vice president; Dorothy Jeanne Hartman, secretary; Martha Durbin, treasurer; and Miriam Bartlett, social chairman.

Members of French club voted to hold weekly luncheon meetings on Monday in the Pine Room of the University Commons. Regular meetings will be held every second and fourth Monday of the month at 7:30 p. m. The next meeting is scheduled for Monday, Oct. 10, in the Alpha Tau house.

The executive committee will meet today to decide definitely on the French movie to be sponsored by the Cercle Francais this fall. This is an annual project of the group.



Is a Major

It's Maj. Harry L. Lewis now serving the former captain" received word Tuesday of his promotion from the adjutant general of the war department of Washington, D. C.

The major, who has been in his present assignment since 1935, came here from Fort George Wright, Washington. He has seen 25 years of service in the U. S. Army. He is a graduate of the Tennessee Military Institute and the Infantry School, Fort Benning, Ga.

THE SUNFLOWER
Vol. XLIV, No. 4 Thursday, Oct. 6, 1938
Published each Thursday morning during the school year by the students in the department of Journalism of the Municipal University of Wichita. Entered as second class matter, Sept. 24, 1916, at the postoffice at Wichita, Kans., under the act of March 3, 1879.
Member of the Associated College Press, publishers of the Collegiate Digest, and a member of the College News Service. The Sunflower is one of the oldest student publications in the State of Kansas, having been founded in 1896.
Subscription by mail in the United States is \$1.50 per school year. Advertising rates furnished upon request. Address: The Sunflower, University of Wichita, Wichita, Kans., or phone 3-5832.
Dorothy Tennant, Editor-in-Chief
Douglas Nunn, Managing Editor
Bill McDowell, Business Manager
Dorothy Tennant, Desk Editor
Charles Poe, News Editor
Mary Lou Stratton, Society Editor
Maxine Pantier, Assistant Society Editor
Bob Campbell, Sports Editor
Catherine Dedrick, Women's Sports Editor
Kenneth Marts, Cartoonist
Jerry Rogers, Photographer
Maxine Pantier, Zora Goldstein, Bill Gentry, Photographers
Virginia Russell, Advertising Solicitors
REPRESENTED FOR NATIONAL ADVERTISING BY
National Advertising Service, Inc.
College Publishers Representative
420 MADISON AVE. NEW YORK, N. Y.
CHICAGO • BOSTON • LOS ANGELES • SAN FRANCISCO
MEMBER
KANSAS
PRESS ASSOCIATION
1937 Member 1938
ASSOCIATED COLLEGIATE PRESS
Distributor of
COLLEGIATE DIGEST

Barrage of Apple Cores Is 'Childish Disgusting'

That apple-core barrage Saturday night in the East Stadium, where sportsmanship and loyalty supposedly reign, was the most stupid and disgusting childish display of asinine antics ever witnessed here.
Had it been inspired by the visiting school, this barrage—chief victims of which were the band and helpless cheer leaders—would have started a riot.
But incited and maintained by a handful of bushwhackers who call themselves Shockers, the majority of students who ARE Shockers, could only hang their heads in shame and humiliation.
In the future such horse-play must be quelled by the student body themselves or, it is feared, authorities will have to stoop to the indignity of disarming these pretending collegians by discontinuing student concessions in the stadium.

Baseball Takes Place of European Scare in News

Newspapers all over the country are placing special editions and extras on the streets this week, but unlike those of past weeks they do not primarily concern war. They report another type of conflict and rivalry.
In Chicago today it is balls instead of bullets, and bats instead of guns for the annual World's Series is in progress.
Predictions in this modern world of sport are highly undependable and useless today, but it can be said that when one aggregation has won four contests, the matter will be settled once and for all.
We, on this continent, can be thankful for such sane and upbuilding competition in which we have such high interest. No credit can be given the gruesome "game" carried on by some nations, and when they get through, nothing is settled.

Wichita Looks Forward To Era of Soft Water

Wichitans are looking forward to a new era in water convenience—the like of which the city has never before enjoyed. Plans are being pushed forward rapidly since voters Tuesday cast ballots three to one in favor of issuing city bonds to cover the cost of bringing the water to the city.
Citizens are fairly laughing in their plumbers' faces, because they have been promised that the new liquid to flow in their pipes will not rust them. Thrifty housewives are figuring the expected savings in soaps and softeners, hoping to make the savings meet the 15 per cent increase in rates.
Given serious, practical thought, without considering the irrelevant question of whether the cost is, or is not, exorbitant, all Wichita knows it needs soft water.
Scrape the accumulated salts of years past from your tongue and expectorate to the four winds—soft water is on its way!

Railroad Employees Pay For Sins of Management

Railroads are demanding wage cuts almost simultaneously with rate increases, and as the arguing progresses the truck lines and private carriers are getting the business.
Railroads last year hauled 350,000 fewer carloads of fruit and vegetables than in 1930, according to the department of agriculture. The "public be damned" attitude of old Commodore Vanderbilt, the department report said in substance, is still causing too many carriers to lose their customers.
It is time the rail carriers "humanize" their relationship with the public in order to gain support. They have reduced total payroll costs 47 per cent since 1920. It's now the magnates' turn to wring a little more water from their stocks and do something about the enormous interest load that takes more than one-sixth of the carriers' income.
The employees should be punished no more for the sins of the management.

Hospitalization Increase Is Luxury for Students

A hospitalization plan, comparable to the best in the country, will be in effect here this fall, with an increase of from three to six days of hospitalization available to students each year—at no extra cost.
Since health is essential to success and the educational process, this means that local students have available a service which in most schools would be considered as a luxury.
Thus the University Health Committee has perhaps done more to directly benefit both local and out-of-town students than any other improvement made in the University this year.
The true purpose of education is to cherish and unfold the seed of immortality already sown within us; to develop, to their fullest extent, the capacities of every kind with which the God who made us has endowed us.—Anna Jameson.
Finally, education alone can conduct us to that enjoyment which is, at once, best in quality and infinite in quantity.—Horace Mann.
That's what education means—to be able to do what you've never done before.—George Herbert Palmer.

Instruction increases inborn worth, and right discipline strengthens the heart.—Horace.

On the Hill
The Fruit Brigade
What About Whock?
Boostin' the Booster
Library—Comin' Up
By Marge Gray

PHI SIG has some lovely pledges. The only thing wrong with them is that they're still dripping behind the ears—they actually think it's cute to fire used apples at their own school band. These juvenile models evidently haven't caught on that things like that just aren't done around these parts. If their Greek superiors can't calm them down there are always other ways.—And we DO feel they really should be made to understand.

Whock, okayed by the deans, endorsed by the Council, and acclaimed by the students will meet this eve for the first time on the campus. Headed by Energy-Up Blood, with Charley Dunn as V. P., Jim Hammond as Treas., Sid Martin keepin' the books, and boasting a membership of 15 men from each fraternity and 15 from the Barbs, Whock looks like an easy winner in the finals. Tonight's meeting will be to determine campus pep principles and to outline a logical plan of attack. Friday noon there is to be an all-male convo to name 75 more members for the organization, and to select cheerleaders and possible rally-leads.
We've needed something like this for a long, long time—and even now the football team has pulled out so far in front of the student body, we're gonna have to Whock awfully fast to catch up.

OUR Booster trip, to Topeka this year, should be a very fancy little affair—the details of which seem, somehow, to remind me of the former trek to one Oklahoma City game, up to and including the \$4.20 carlin' fare. However, I trust the outcome of the trip will be different in a couple of ways. First, our powerful Mules ought to come out of a Washburn fray at least a little on top—albeit the Ichabods have always more or less sliced us up on their home field; and, secondly, I really hope Topeka will be left in a little better condition than Oklahoma City was—we might want to go back someday. Anyway, that's an idea so we all might kind of keep it in mind . . . the weekend of the 21st.

Whereas, the United States of America did, on Sept. 12, 1938, offer to aid this University with a grant of \$53,997, to assist in financing the construction of a library building and the landscaping of the grounds, our Board of Regents accepted the grant Sept. 23, 1938, to begin work eight weeks from the date of the offer and to complete it within nine months from commencement of the work. The Board has since found that this time was not sufficient to permit good, thorough work to be done; so they petitioned for, and were granted this time extension:
Oct. 24.—Delivery of plans and specifications to Ft. Worth office for consideration.
Nov. 1.—First advertisements for bids.
Nov. 8.—Second advertisements for bids.
Nov. 18.—Saturday, the 19th, preferred for opening of bids.
Nov. 28.—Starting date for building.
Completion of building within time now specified, August 28, 1939. Hooray!

Whock Club
Charter members of Whock Club will have their first meeting of the year tonight at 7:30 in 207 Science Building.—Ed Blood, president.

Alpha Tau Tickets
Although tickets sold by the Alpha Taus were for the picture, "Hold That Coed," at the Palace, the tickets will be honored up to Friday on the picture that is showing at that theater now.—Mary Elsie Reser, manager.

Young Democrats
There will be a meeting of the Young Democrats in 328 Administration Building on Monday noon, October 10.—Stanley Diamond, president.

Y.W.C.A.
There will be a regular meeting of the Y.W.C.A. cabinet in the Y.W. room next Monday at 5 p. m.—June Ilgner, president.

Pegasus
Pegasus, women's horseback riding club, will meet Friday noon in the Commons Pine Room.—Jeanne Lewis, president.

Matrix
Members of Matrix are asked to meet for a meeting to elect officers next Friday at noon in the Commons Pine Room.—Mary Evelyn Brincefield, vice president.

Debate
Persons interested in a debate organization, either in personal debating or enthusiastic about the organization, are invited to a meeting of the debate group next Thursday at 7:30 p. m. in the Commons Lounge.—Forrest L. Whan, debate coach.

Intramural Soccer
All Barbs wishing to compete in intramural soccer or touch-football please see Russell (Jiggs) Nelson or Lewis Crum. Anybody who has not played with any other organization this year is eligible to compete. Games are played at 3 and 4 p. m. on Tuesdays and Thursdays.—Russell Nelson, sport manager.

Shocker Shots - - - by Marts



Grad Gossip

Reed on Second—Cramer Reed, Phi Upsilon Sigma, is beginning his second year in medical school at Washington University, St. Louis. During the past summer Mr. Reed worked at the St. Francis Hospital in Wichita.
Graduated in 1937, Mr. Reed was president of his fraternity, and president of senior, junior, sophomore, and freshman classes.
Isely's in Arkansas—Mr. and Mrs. Dwight Isely, both former old Fairmounters, are now living in Fayetteville, Ark., where Mr. Isely is professor of entomology at the University of Arkansas.
After receiving his B. A. here in 1910, Mr. Isely went to the University of Kansas, where he received his master's. He is a member of Webster fraternity.
Mrs. Isely is the former Dorothy Dort, 1913 graduate and a former member of Sorosis.

Old Grads in Dodge—The C. C. Isley's are living in Dodge City, where Mr. Isley runs a lumber company. A member of Webster fraternity, Mr. Isley was graduated from old Fairmount College in 1902, and his wife, the former Almeda Elizabeth Cook, Sorosis, received her bachelor's here in 1903.
Charles C. Isley, Jr., one of their four children, has a position with the CCC camps at Berryman, Mo. The junior Isley received his bachelor's here in 1930, and was also a member of Webster fraternity.

Thornton Isely, another son, is teaching music, English, and physics at Belvue, Kansas. He finished his four-year course here last spring.

Beebe Marries—John Beebe, Jr., son of Mrs. Viola McKinney Beebe, assistant professor of classical languages here, was married to Patricia Eloise Boden, Washington, D. C., Aug. 15, at Elkton, Md.

A member of Pi Alpha Pi, Blue Key, and the Young Democrats Club, Mr. Beebe was graduated from the University here in 1937. Since his graduation, he has been attending law school at George Washington University in Washington. He has been affiliated with Sigma Nu, national social fraternity.
Formerly of Atlanta, Ga., Mrs. Beebe has been attending school at the nation's capital city. The couple will be at home at 2121 New York, Washington, D. C., after Oct. 1.

Grad Teaches Commerce—Mrs. Percy A. Stearns, formerly Mary Ellen Cook and a graduate of the University in 1936, last week received an interim position in the Cedar Vale, Kan., schools.
Mrs. Stearns will teach commerce. Last year she taught at Derby and during the 1936-37 school year she taught at Garden Plain.

Two Grads Make Partnership—Two former members of Alpha Gamma Gamma, Richard O. Jones and Robert J. Hornung, have set up a new law partnership under the firm name of Jones & Hornung, 708 Bitting Building.
After attending the University here, Mr. Jones received his legal

THE SCREEN REPORT

THIS WEEK'S MOVIES
Miller . . . Starts Saturday
The intimate story of a Royal Bad Girl, "Marie Antoinette," with Norma Shearer and Tyrone Power.
Palace . . . Now Thru Sat.
"BOY MEETS GIRL" with James Cagney, Pat O'Brien, Marie Wilson.
Starts Sunday—The 3 Ritz
Brothers in "STRAIGHT, PLACE AND SHOW," with Richard Arlen, Phyllis Brooks and Ethel Merman.
Orpheum . Last Times Thurs.
GLEN GRAY and the CASA LOMA ORCHESTRA, in person. On the stage. (5 days)
Starts Friday—The super shockers of the century, "DRACULA AND FRANKENSTEIN," on the same program.
Uptown . . . Starts Sunday
Shirley Temple in "LITTLE MISS BROADWAY." Also Katherine Hepburn and Cary Grant in "HOLIDAY"

DIAMOND HEADS DEMOCRATS AGAIN

Club Plans Country Outing For Oct. 12
Stanley Diamond, president of the Student Council, was re-elected president of the Young Democrat Club at its meeting Tuesday noon.
Other officers elected were Clark Ahlberg, the former secretary, as vice president; Richard Dowell, secretary; and Shirley Asher, treasurer.
A country-cabin weiner-roast is being planned by the club for Oct. 12.
University of California Has Large Extension Enrollment
More than 10,000 adults are enrolled in University of California extension courses.
Muhlenberg College Received Name from Lutheran Official
Muhlenberg College was named for the Lutheran patriarch, Henry Melchior Muhlenberg. Its first president was Rev. Frederick A. Muhlenberg.

ACE COMMENTATOR APPEARS IN MOVIES

Boake Carter, ace news commentator of the Columbia Broadcasting System, makes his screen debut in "The Dead March" the sensational war picture which is now showing at the Civic Theatre.
Carter's daily news broadcasts have gained him a host of followers for he brings to his listeners not only the day's events in a clear dramatic style, but he also manages to penetrate the new behind the news.
In "The Dead March", Carter, as a crusader against war, uses this same style of dramatic delivery to describe the appalling scene and horrors of war in this picture.
"Yellow Jack" with Robert Montgomery and Virginia Bruce will be on this same program along with a March of Time concerning the recent international situation.

CIVIC 725 W. DOUGLAS 'Pride of the City'

NOW! Through Saturday
Bargain Matinee Saturday 1:15 'til 6 P. M.
One of the Most Powerful Preachments Against War . . .
"The Dead March"
with BOAKE CARTER
also
Robert Montgomery-Virginia Bruce
"Yellow Jack"
Also "THE MARCH OF TIME"
"Prelude to Conquest"
COMMUNITY SING—LATEST NEWS

FREE!!

Pound of Chocolates to the Most Nearly Correct Prediction on the Outcome of the W. U. Game Saturday. Entries Must be Filed Before 6 p. m. Sat. at the—

ACCREDITED ANDERSON PHARMACY
CENTRAL-HILLSIDE WICHITA, DIAL 2-0408

In Case of Ties—The First Entry Filed Wins
Get Yours in Early

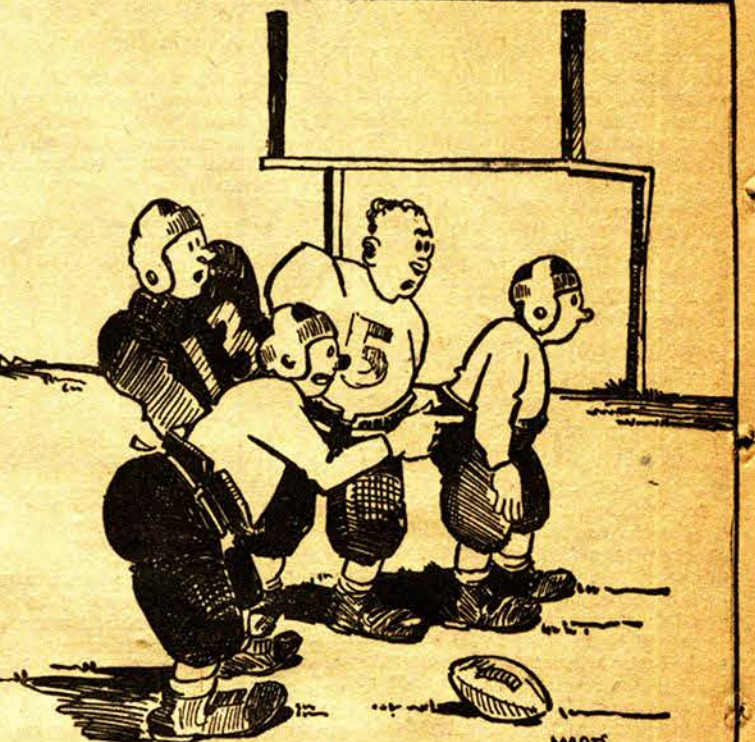
NEFF SPEAKS BEFORE PARENTS, TEACHERS

Dean Frank Neff of the College of Business Administration Tuesday night spoke to the Parent-Teachers Counsel at a dinner meeting held in the cafeteria of Wichita High School North.
"Taxes and Teacher Retirement" was the subject which the speaker discussed.

DEBATERS TO ARGUE ENGLISH ALLIANCE

LAWRENCE, KAN., Oct. 5.—High school debaters of Kansas this winter will have a definitely up-to-the-minute subject in that the proposal to be argued is that "the United States establish an alliance with England."
Debates will be administered under auspices of the Kansas High School Activities Association.

Corsages Table Decorations
Quiring Dwston Florists
"The Distinctive Flower Shop"
Phone 4-4359
Plants 935 N. Hillside Cut Flowers



Fall's Peppiest Shoe! SCOW TOE

Extra Thick Live Crepe Sole
\$3.95
MAIN FLOOR
Square off for a sporty season in the "scow" . . . shown in all the expensive shoes . . . we feature it at this thrilling low price.
All the Smart Coeds Wear These Sport Oxfords to the Games
Allen W. Hinkel Co.

IT'S A TOUCHDOWN!

For Shockers Who Celebrate at Droll's After the Game

Droll's English Grill

STUDENT DISCOUNT APPLICATION
• SEE •
The Life, the Loves of a Royal Bad Girl
NORMA SHEARER TYRONE POWER
IN •
"Marie Antoinette"
MILLER THEATRE—STARTS SATURDAY
Sign This Application—Hand It to the Miller Cashier and You Will Be Admitted for -----
25c
Name ----- School -----

Giant Fresh Strawberry Sundae 10c
Today and Friday Only
A Generous Portion of
Steffen's
Ice Cream
Topped with Fresh Strawberries
at
The COMMONS
Fountain and Pine Room

Seven Former Campus Students Tell Engagement, Wedding Plans

Jentsch-Kelso Vows Read; Hunt-Amsden, Helena-Chapin, Carr-Kruske Announce Dates

PROMINENT among the social events of the fall season are the announcements of engagements and marriages of several former University students.

Mr. and Mrs. M. P. Jentsch, 3219 Country Club Place, announce the marriage of their daughter, Maxine, to Arthur D. Kelso, son of Mrs. Arthur Kelso, Sept. 30, at Augusta, Rev. R. Shook read the vows.

Mrs. Kelso formerly attended the University where she was affiliated with Epsilon Kappa Rho sorority. During the past year she has been associated with the Fair Shoe Store. Mr. Kelso also attended the University and is now affiliated with the Fair Shoe Store. The couple will be at home at the Crescent Apartments.

MR. AND MRS. CLIFFORD V. HUNT announce the engagement and approaching marriage of their daughter, Barbara Louise, to Floyd T. Amsden, son of Mr. Edgar A. Amsden. The wedding will be an important social event of the mid-winter season.

The bride-elect is now attending the University and is a member of Alpha Tau Sigma sorority. Mr. Amsden is a graduate of the University of Kansas, where he was affiliated with Sigma Chi fraternity. He also attended the University of Wichita last year. He is now associated with the Amsden Lumber Company.

OF LEADING interest in University circles is the announcement of the engagement and approaching marriage of Betty June Helena, daughter of Mr. and Mrs. Sheldon L. Helena, to Norton Spencer Chapin, son of Mr. and Mrs. Dwight Chapin, Jr. The wedding will be solemnized October 29, at the Grace Methodist Episcopal Church.

Miss Helena attended the University, where she was prominent in social circles. She was affiliated with Sorosis sorority.

Mr. Chapin attended Kansas State College at Manhattan and Purdue University, where he was a member of the Chi fraternity. He is now associated with his father-in-law in the Chapin Contracting Company at Hastings, Neb.

HELENE LOUISE CARR, bride-elect of Frank N. Kruska, Jr., has announced the personnel of her bridal party. She has chosen her sister, Jeanne, to be her maid of honor and only attendant.

Mr. Kruska will have Will C. Price, Jr., as best man, and ushers will be Tommy Myers and Alvin Winzler.

The wedding of Miss Carr and Mr. Kruska will be an event of Oct. 15, in the Chapel of the First Presbyterian Church with Dr. Asa J. Ferry officiating.

Following the ceremony, Mr. and Mrs. Carr will be host and hostess at a reception in their home honoring the bridal party and wedding guests.

Davis To Lecture At A. A. U. W. Meet

Dr. Earle R. Davis, head of the English department will lecture on "Thomas Mann and Joseph Story" at the meeting of the American Association of University Women Oct. 6, at the Blackwell, Okla. Country Club.

Dr. Davis will review the story of Mann's handling of the Joseph story from the Bible. He will explain in his lecture that Mann has tried to show that his people, the Germans, like Joseph, will eventually come to good in another land.

Dr. Davis considers Mann to be the world's greatest living novelist. Mann has been exiled from Germany and is at present living in the United States.

Women's Dean to Head Conference

Dean Grace Wilkie will attend the annual conference held for the Kansas Association of Deans for Women and the Advisers of Girls in Winfield, Kan., Oct. 7 and 8.

She will preside as chairman at the morning session and will lead a discussion following given by Dr. Grace Louise Elliott, well-known Y. W. C. A. lecturer and author. Dr. Elliott's topic will be "Are the Deans Carrying Their Weight?"

Roundabout

WHAT DO YA' think about Germany's winnin' the war 20 years after it was fought? Webster's prexy Leroy Warner, self-styled B. M. O. C. (Big Man on Campus) starts a clean-up amid loud guffaws and lotsa criticism—the moral to that being the old one about people who live in glass houses... wonder if Gamma Pledge's pledge papa automatically becomes a grandpop since Harold himself is already a papa. "n Kay McQuown's hairdo—just isn't most of the time... the Alpha Tau pledges seem to have no conception of how many apples even Herbie Kay can consume in one evening—one would at least have thought they would stop before requested to.

MONICKER CHANGES—now it's Doc Neff, Maj. Lewis, and Doc Read... Bob Ray's Webster pin made a round trip in record time last Sunday night—and he was the only one who wasn't surprised... Reser can't forget her stage training 'n is on the road to fame for those regular sensational late entrances to classes.

LOOKS LIKE Lou Sweeney's Irish blue eyes are destined to make many a gal's heart work overtime—and not hard work to do either... someone so bright seemed to think he was pretty cute throwing hard liker bottles at the game Saturday, but we nominate him for the tall pointed cap and the corner stool... Mixer-runner Julie takes to wearin' feminine jewelry and claims its lost or found or somethin'... Billy Martin, Pi Alpha Sid's brother, strives for sleeping time record and finds the best sleeping can be had from 8 m. til noon... 's 'nough.

A Lotta Studes.

Websters To Initiate Dr. Sepmeir

Men of Webster will initiate Dr. Kurt Sepmeir, head of the university German department, as an honorary member next Sunday evening at their regular initiation services.

Dean Frank Neff, Dean Arthur J. Hoare, Roy W. Elliott, and Prof. George D. Wilner are other honorary members of the organization.

Pi Alphas To Give Paddle Party at Shirkmere Hotel

Lauck's Orchestra To Play; Purple and Gold Will Be Decorations

Members of Pi Alpha Pi fraternity will honor their new pledges with the twenty-sixth annual paddle party tomorrow night from 9 p. m. til 12 midnight in the Shirkmere Hotel Ballroom.

Miniature paddles of purple and gold, the fraternity colors, will be used in the decorations, and paddle favor dances will be featured. Purple and gold streamers will form a novel design on the walls and ceiling of the room.

Mrs. Gilah Long, housemother, who has recently returned after a semester's absence, will preside as hostess during the evening.

Harold Ottaway, chairman, Carl Auchterlonie, and Ruskin Meyer make up the committee which has charge of arrangements. Virgil Lauck's orchestra will furnish music for dancing. Guests will include:

Mrs. Gilah Long, housemother, who has recently returned after a semester's absence, will preside as hostess during the evening.

Harold Ottaway, chairman, Carl Auchterlonie, and Ruskin Meyer make up the committee which has charge of arrangements. Virgil Lauck's orchestra will furnish music for dancing. Guests will include:

Mrs. Gilah Long, housemother, who has recently returned after a semester's absence, will preside as hostess during the evening.

Harold Ottaway, chairman, Carl Auchterlonie, and Ruskin Meyer make up the committee which has charge of arrangements. Virgil Lauck's orchestra will furnish music for dancing. Guests will include:

Mrs. Gilah Long, housemother, who has recently returned after a semester's absence, will preside as hostess during the evening.

Harold Ottaway, chairman, Carl Auchterlonie, and Ruskin Meyer make up the committee which has charge of arrangements. Virgil Lauck's orchestra will furnish music for dancing. Guests will include:

Mrs. Gilah Long, housemother, who has recently returned after a semester's absence, will preside as hostess during the evening.

Harold Ottaway, chairman, Carl Auchterlonie, and Ruskin Meyer make up the committee which has charge of arrangements. Virgil Lauck's orchestra will furnish music for dancing. Guests will include:

Mrs. Gilah Long, housemother, who has recently returned after a semester's absence, will preside as hostess during the evening.

Harold Ottaway, chairman, Carl Auchterlonie, and Ruskin Meyer make up the committee which has charge of arrangements. Virgil Lauck's orchestra will furnish music for dancing. Guests will include:

Mrs. Gilah Long, housemother, who has recently returned after a semester's absence, will preside as hostess during the evening.

Harold Ottaway, chairman, Carl Auchterlonie, and Ruskin Meyer make up the committee which has charge of arrangements. Virgil Lauck's orchestra will furnish music for dancing. Guests will include:

Mrs. Gilah Long, housemother, who has recently returned after a semester's absence, will preside as hostess during the evening.

Harold Ottaway, chairman, Carl Auchterlonie, and Ruskin Meyer make up the committee which has charge of arrangements. Virgil Lauck's orchestra will furnish music for dancing. Guests will include:

Mrs. Gilah Long, housemother, who has recently returned after a semester's absence, will preside as hostess during the evening.

Harold Ottaway, chairman, Carl Auchterlonie, and Ruskin Meyer make up the committee which has charge of arrangements. Virgil Lauck's orchestra will furnish music for dancing. Guests will include:

Mrs. Gilah Long, housemother, who has recently returned after a semester's absence, will preside as hostess during the evening.

Harold Ottaway, chairman, Carl Auchterlonie, and Ruskin Meyer make up the committee which has charge of arrangements. Virgil Lauck's orchestra will furnish music for dancing. Guests will include:

Mrs. Gilah Long, housemother, who has recently returned after a semester's absence, will preside as hostess during the evening.

Harold Ottaway, chairman, Carl Auchterlonie, and Ruskin Meyer make up the committee which has charge of arrangements. Virgil Lauck's orchestra will furnish music for dancing. Guests will include:

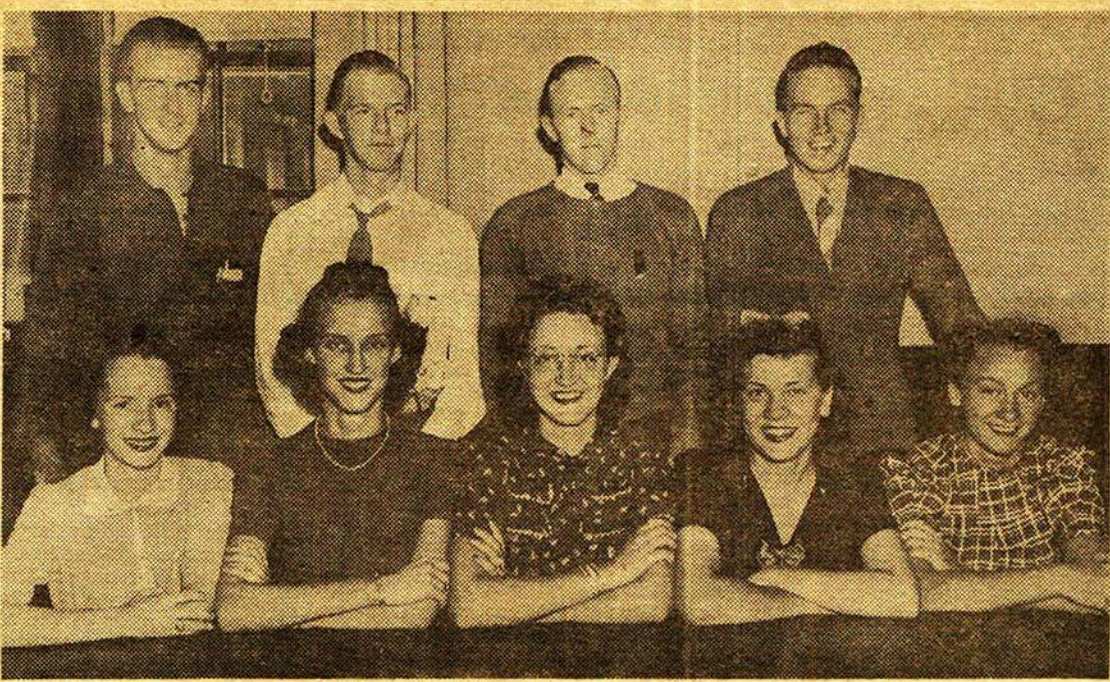
Mrs. Gilah Long, housemother, who has recently returned after a semester's absence, will preside as hostess during the evening.

Harold Ottaway, chairman, Carl Auchterlonie, and Ruskin Meyer make up the committee which has charge of arrangements. Virgil Lauck's orchestra will furnish music for dancing. Guests will include:

Mrs. Gilah Long, housemother, who has recently returned after a semester's absence, will preside as hostess during the evening.

Harold Ottaway, chairman, Carl Auchterlonie, and Ruskin Meyer make up the committee which has charge of arrangements. Virgil Lauck's orchestra will furnish music for dancing. Guests will include:

Mrs. Gilah Long, housemother, who has recently returned after a semester's absence, will preside as hostess during the evening.



Greek Pledge Presidents

Sorority and fraternity pledge groups elected officers at their meetings last week. From left to right, seated, are the sorority presidents: Alma Louise Gray, Alpha Tau; Ethel Jane Meyers, Sorosis; Betty Greene, Kappa Rho; Ruth Keener, D. O.; and Tommie Hartman, Pi Kap. Standing, from left to right, are Tom Alexander, Webster; Paul Hesse, Alpha Gam; Jack Armour, Phi Sig; and Kenneth Forster, Pi Alph.

Greek Societies Announce Their Pledge Officers

Sororities Select Hartman, Keener, Greene, Myers, Gray As Heads

Election of officers to head pledge groups of both the sororities and fraternities was concluded early this week.

Officers of Alpha Tau Sigma sorority are Alma Louise Gray, president; Betty Van Arsdale, vice president, and Eva Jean Pohlman, treasurer.

Delta Omega sorority elected the following girls to act as pledge officers: Ruth Keener, president; Mickey Reynolds, vice president; Harriet Porter, secretary; Frances Christopher, treasurer, and Mary Jane Merrill, reporter.

The following girls will head the pledge group of Pi Kappa Psi sorority: Tommie Hartman, president; Eleanor Fair, vice president; Harriet Wilson, secretary, and Jeanne Burgess, treasurer.

Heading the list of Sorosis pledge officers is Ethel Jane Meyers, president. Others are Margie Maine, vice president; LaVetta Bolan, secretary; Beth Hatton, treasurer, and Mary Jayne Brennan, head of publicity committee.

Betty Green was elected president of Epsilon Kappa Rho pledges. Betty Miller is vice president and social chairman; Roberta Waggy, secretary; Estella Parks, treasurer, and Jewell Wilson, sergeant-at-arms.

To head their group, pledges of Pi Alpha Pi elected Kenneth Forster president; Craig Kennedy, Jr., vice president; Delbert Hampton, secretary and treasurer, and Elmo Davis, sergeant-at-arms.

Jack Armour will head pledges of Phi Upsilon Sigma, and Tom Kin-kaid is to be vice president. Other officers are Frank Hafer, treasurer, and Jack Tanner, secretary.

Paul Hesse will head the Alpha Gamma Gamma pledge group for the coming year. Dudley Tankersley

Calendar

Thursday, Oct. 6, Noon mixer.
Friday, Oct. 7, Alpha Gamma Gamma pledge party, Pi Alpha Pi paddle party.
Saturday, Oct. 8, Wichita-St. Louis game, here, night.
Thursday, Oct. 13, C. U. W. Directory Tea.
Friday, Oct. 14, Sorosis pledge dance.
Saturday, Oct. 15, Pi Kappa Psi pledge dance, Wichita-Pittsburg game, there.
Sunday, Oct. 16, Pi Alpha Pi faculty tea.
Friday, Oct. 21, Wichita-Washburn game, there, booster trip.

is to be vice president; Chester Barrett, secretary, and George Chandler, treasurer.
Selected to head the pledge group of Men of Webster is Tom Alexander, president; Gene Fey, vice president, and Jerry Rogers, secretary and treasurer.

C. U. W. Will Honor New Girls at Tea

Annual Council of University Women's Directory Tea for all new girls is to be given Thursday, Oct. 13, from 2 until 4 p. m. in the Y. W. C. A. and Faculty Rooms.

Jacquetta Downing has charge of the tea and has on her committee: Mary Haymaker, Helen Hanson, and Mrs. Faye Gossett.

Faye Ricketts, president, Dean Grace Wilkie, and Dr. Hazel Branch will welcome the guests.

Mrs. W. M. Jardine will pour from 2 till 3, and Mrs. Mattie Cope will take her place from 3 until 4 p. m.

Invitations will be issued the last of this week.

Texas Technologists Believe Freshmen Hazing Beneficial
Freshmen of Texas Technological Institute, at a special meeting, agreed that hazing was beneficial to them.

Alpha Gams Will Fete Pledges at Crestview Club

Evans Makes Arrangements; Gouldner's Band Will Furnish Music

Alpha Gamma Gamma fraternity will honor its pledges at the "Diamond Jubilee" party to be held at Crestview Country Club on Friday, Oct. 7, from 9 to midnight.

Arrangements for the annual event, which is one of the first in a series of Greek informal pledge parties, have been made by Ferd Evans, chairman, Kenneth Marks, Charles Dunn, and George Chandler. Rene Gouldner and his orchestra will play for dancing.

A partial guest list includes: Dr. and Mrs. Huzo Wall, Dr. Clement Stevers, Mr. and Mrs. Worth A. Fletcher, Mr. and Mrs. Harry Marr, Dalea, Florence Fitzwilliams, Joe Hesse, Helen Dragan, Fred Evans, Kenneth Marks, Merrell Kirkpatrick, Marie G. G. G., Oliver Roth, Charles Dunn, Stan Diamond, Halmar Waddell, Wallace Rolter, Jim Garner, Bud Gould, Jack Wertz, Bob Kirkpatrick, Kent Waddell, Fred Wylie, Fred Partridge, Thurlow Luehrance, Jim Lovland, Bob Christian, Warren Nossaman, Bob Brown, Tom Barr, Clyde Crosswhite, Henry Amsden, Frank McCabe, Bill Parrott, Francis Farmer, David Willis, Gene Seizer, Clark Ahlberg, George Chandler, Bob Snyder, James Gardner, Bob Tyler, Bob Keller, Fete Armstrong, Bill Maupin, Merle Pickett, Dudley Tankersley, Armand Brock, Bob Price, Paul Hesse, Dan Boone, Fred Hinzson, Malcom Myers, Lewis Billinger, Bob Carson, Chester Barrett, Glenn D. Farrar, Stanford Waddell, Max Milbourn, Bernard Downing, Virginia Alford, Mina Jean Gillespie, Mary Evelyn, Brinfield, Lavonne Button.

Schedule Initial Open House for Coming Thursday

Alpha Taus, Delta Omegas, Pi Kaps, Kappa Rhos Will Be Hostesses

Beginning next Tuesday evening, Oct. 11, sororities on the campus will hold open house for fraternities in order to introduce their new pledges.

The affairs will be held at the sorority houses from 7 till 8 p. m., with the presidents presiding.

The dates were set by each sorority head drawing a fraternity at the Women's Panhellenic meeting last Thursday afternoon.

On Oct. 11, the schedule will be as follows: Alpha Tau Sigma-Phi Upsilon Sigma, Pi Kappa Psi-Alpha Gamma Gamma, Delta Omega-Men of Webster, Epsilon Kappa Rho-Pi Alpha Pi.

Oct. 18: Sorosis-Alpha Gamma Gamma, Alpha Tau Sigma-Men of Webster, Pi Kappa Psi-Pi Alpha Pi, Epsilon Kappa Rho-Phi Upsilon Sigma.

Oct. 25: Sorosis-Men of Webster, Alpha Tau Sigma-Alpha Gamma Gamma, Pi Kappa Psi-Phi Upsilon Sigma, Delta Omega-Pi Alpha Pi.

Nov. 1: Sorosis - Phi Upsilon Sigma, Alpha Tau Sigma-Pi Alpha Pi, Delta Omega-Alpha Gamma Gamma, Epsilon Kappa Rho-Men of Webster.

Nov. 8: Sorosis-Pi Alpha Pi, Pi Kappa Psi-Men of Webster, Delta Omega-Phi Upsilon Sigma, Epsilon Kappa Rho-Alpha Gamma Gamma.

"Pledgeship" will be the theme of the Pi Kappa Psi pledge dance to be given Saturday, October 15, at the Allis Hotel from 9 to midnight.



Reed Studios Will Make a Hit with You
Parnassus Photographer for '38-'39
137 N. Broadway

Farquharson To Play For Concert

Mrs. Don Farquharson, wife of the former University cashier, will be featured in a concert with the University Symphony Orchestra, prior to her departure from the city.

Accompanied by her two daughters, Mrs. Farquharson plans to join her husband in about two weeks at Rollo, Mo., where he has assumed his new duties as business manager of the Missouri School of Mines and Metallurgy.

Sorosis To Fete New Pledge Class

To honor pledges, members of Sorosis sorority will hold a semi-formal dance at the Crestview Country club on Friday, Oct. 14, from 9 p. m. until midnight.

Pledges will be introduced in the middle of the evening and presented with surprise gifts.

Theme and decorations of the party are being kept secret. In charge of arrangements are Eloise Morris, Doris Harvey, and Jeanne Carr.

Spaeth To Speak At A. A. U. W. Meet

Dr. J. Duncan Spaeth, visiting teacher at the University and noted lecturer, will address members of the American Association of University Women at their annual guest-day luncheon in the Twentieth Century Club at 12:30 p. m. Saturday.

Scout Group Will Initiate Four Men

Alpha Phi Omega, national scouting fraternity, announces that four new members will be initiated at special services next Wednesday at 7 p. m. in the Commons Building, preceding the regular meeting.

The men who will be initiated include: Howard Funderburgh, Jerry Branson, Warren Nossman, and Fred Wiley. Jim Hammond, president of the group will preside at the ceremony.

Alpha Phi Pledges Wear New Ribbons

Pledges of Alpha Phi Omega, national scouting fraternity, will wear new ribbons this year, according to Jim Hammond, president.

The new emblems consist of a blue background with a gold stripe and are held by a small regulation scout pin.

MIXER SPECIAL

An Exquisite Mixer Made Ham Salad Sandwich and A Tall Coke

20c

(Good Till Next Thursday)

GOLD STRIPE Stockings

Go To College

4-thread chiffons, for campus and everyday wear.
3-thread, for dress-up.
2-thread, sheer like anything, for dancing and houseparty wear.

\$1.00, \$1.15, \$1.35 a pair

Rorabaugh-Buck

Connie SPECTATORS

Modeled by Miss June Illgner

popular president of the Y. W. C. A.

Miss Illgner, with excellent taste, counts on Connie's perfectly tailored spectators to give the swagger touch to her casual outfits.

Rorabaugh-Buck

black, golden brown, blue or Chianti wine Suede with Calif. 4.95

black or golden brown Suede with Calif. 3.95

KODAKS FILMS

LAWRENCE PHOTO

Cine Kodaks 149 N. Broadway Finishing

A HAPPY THOUGHT FOR THRIFTY COLLEGIANS

- SEND your weekly laundry home by handy Railway Express

Right from your college rooms and return, conveniently, economically and fast, with no bother at all. Just phone our local college agent when to come for the bundle. He'll call for it promptly—whisk it away on speedy express trains, to your city or town and return the home-done product to you—all without extra charge—the whole year through. Rates for this famous college service are low, and you can send collect, you know (only by Railway Express, by the way). It's a very popular method and adds to the happy thought. Phone our agent today. He's a good man to know.

129 N. Market St. Phone 4-4388
Depot Office, Union Station
Phone 4-4311 Wichita, Kan.

RAILWAY EXPRESS

AGENCY, INC.

NATION-WIDE RAIL-AIR SERVICE

RAILWAY EXPRESS

AGENCY, INC.

NATION-WIDE RAIL-AIR SERVICE

You Can't Lose—

If You Patronize a Continental

Good Food—Quick Service

You'll See Your Friends Here

The CONTINENTAL Grills

No. 1—3125 E. Central No. 2—3012 E. Central
No. 3—608 N. Broadway

Wrinkle Diggers Lurk in Dim Light

Those little imps that put crow's feet and other wrinkles in your face work best in dim light. For dim light causes you to frown and strain when you can't properly see the task at hand. There are a hundred visual tasks to be done under artificial light—sewing, reading, and others. The light must be adequate for safety.

It's so easy, so cheap, so simple to give yourself a "beauty treatment" of adequate light. For proper light will ease away your eyestrain and smooth out those tell-tale wrinkles and lines.

DRIVE AWAY THE WRINKLE DIGGERS WITH I.E.S. LAMPS. AT YOUR ELECTRICAL DEALERS

KANSAS GAS AND ELECTRIC COMPANY

Electricity is Cheap

ST. LOUISANS BRING TOUGH SQUAD HERE

Team That Tied DePaul; Beat Missouri Here Saturday Night

After the crushing defeat handed Southwest last week, spirits in the Shocker camp are high as they prepare to meet St. Louis University, the team that last year tied DePaul that in turn defeated Wichita U. 37-7, here Saturday night.

St. Louis last week defeated the Missouri School of Mines, 12-0, and are reputedly a very powerful team. The average weight per man of the team is 184 pounds and the average height 71 inches.

Has Envious Record
Celebrating this year the fiftieth year of active football competition, The Billikens have an enviable record behind them. To one of their teams back in 1906, goes the credit for the longest forward pass on record. The pass traveled 84 yards and was completed. Last year they defeated such strong teams as Catholic University, Missouri, and tied DePaul. They finished the 1937 season with seven victories, two defeats and one tie.

Cosch Al Gebert believes that the Shocker's chances are substantial until the half. The team definitely clicks as evidenced by last week's game.

Use Same System
This week's game will see both teams using the Notre Dame system. St. Louis has in other years specialized in the pass from short punt formation. They will probably bring to us a running and passing attack which will feature the playing of their veteran ends, Hagan and Gayer. The center is also a strong position in the line with the veteran Drabell doing the tossing back.

Last week's game for the Shockers did not add any new stars but the local team as a whole seems to be made of good substantial material. The backfield ran wild and the line opened up holes; the ends tackled the end plays; and all in all the team worked together.

Gebert tried out several combinations of reserves in the Southwest game and they more than proved that he doesn't have to depend on any one eleven. Any number of Shocker reserves can give the Billikens plenty of trouble.

Two teams, both having tasted the fruit of victory, meet on the night of Oct. 8, one to avenge previous defeats and the other to keep a perfect record against another team.



Triple Threat
Harold Brill, the Shockers' triple threat halfback, who co-starred with Tromer Smith in leading Wichita to a smashing defeat over Southwest last weekend, will play a leading role in the St. Louis game Saturday night.

WHEATSHOCKERS TAKE WIN FROM MOUNDBUILDERS

One of Largest Scores In History Run Up In CIC Opener

In a skirmish which proved to be nothing less than a challenge to the whole Central Conference to "try if you will" to unseat last year's champion, the Wheatshockers smashed the Southwest Builders 66-0 last Saturday night.

Never during the course of the game were the home gridsters in danger of being scored upon. Meanwhile Shocker backs were taking advantage of all of the breaks, most of which they themselves were responsible for, to amass a total of ten touchdowns.

Just Miss Touchdown
They barely missed another as the gun sounded the end of the half. Schlottbauer fell one foot from the line.

With expert efficiency, Wichita linemen time and again bowled over the weak line of their opponents to open the way for ball carriers. The ends, however, proved the most producing route for the Shocker backfield men.

Soon after play started Milburn Barnes, guard, intercepted a pass to run 53 yards to score. Niehage made the next counter with a two yard plunge through the line. Smith, scampering around end, made the third.

Neelys Make Score
In the second quarter the Neely boys brought home the lone score. Dale Neely, center, shot the ball to his brother, Oris who threw a pass to George, which resulted in the touchdown.

Harold Brill, through outbacks in the third period, brought two more counters. Then Harrell, Schlottbauer, and Chester Fast each made fourth quarter scores. Only six of the tries for extra point were good.

Varsity Village Is New Name
For Homelike Student Houses
Varsity Village will be the name of a new group of homelike student residences at Niagara University.

Fast Growing College Places
Ban on So-Called Student Evils
Wheaton College, Ill., bans smoking, dramatics, dancing, card-playing, drinking, theater and movie attendance, and is one of the fastest growing colleges in America. You offer the explanation.

ALPHA GAMS UNDEFEATED AT SOCCER

Webster Holds Second; Barbs Are Third In League

So far the Alpha Gams have proved unbeatable in soccer and are far in the lead, having lost no games in the intramural soccer tournament.

In the first game Tuesday afternoon, the Alpha Gams took the Pi Alphas 5-0 and in the second game the Barbs came out victorious in a hard fought battle with a score of 1-0.

Soccer is a new sport added to the intramural program this year and it is proving very popular. Three rounds of a round robin tournament have been played and the strong Gamma team is well on their way to victory. The soccer program should be completed next week and touch football will replace it.

Play in touch football tourney will start Oct. 18 and will be run off in the same manner as soccer has been.

In the doubles and singles tennis tournament the second round has been played and it will be played off as soon as possible.

LIBRARY PLANS

(Continued from Page 1)

rooms will be situated on this floor. At the north end, the general reference room is to be placed. The south side will contain the reserved-book section and a reading room will be available here.

Besides the two rooms mentioned there will be a small browsing room and facilities for librarians' offices and catalogue work on the main floor, as well as small class seminar rooms.

The basement will be only partly excavated, according to the librarian. It will be used principally for the storage of literature. A work room is included in the basement drawings, however.

Construction of the building will be such that wings can be added easily. At the outset preparations were made to plan a five story structure, but the prohibitory cost led officials to consider only the features as outlined above.

University officials moved a step closer to actual library construction last week as the Board of Regents accepted the government's offer of funds to assist the University in financing the \$119,994 undertaking.

It was difficult to determine exactly when library construction would begin because no contracts have yet been let for construction. The acceptance of the PWA offer of funds is a technicality following the government's notification to the University that it was ready to aid the school with a federal grant.

Of the total cost of the library the University will finance 55 per cent, or \$65,995. PWA will assist the University with \$53,997, or 45 per cent of the total cost.

Texas Christian Undeclared
on Home Gridiron Since 1935
Texas Christian University has not lost a football game on its home gridiron since 1935.

From the Sidelines

By BOB CAMPBELL

Each year the freshman class brings to this institution some things that we could easily do without. This year a bunch of boys who are not quite grown up enough to play alone outside the backyard formed an "apple brigade" and pelted our unoffending band with juicy apple cores during most of the evening during Saturday's game. I would like to speak for the majority of the student body and address myself to the "core-throwers." You weren't funny. No one appreciated your obvious efforts to be noticed. Besides their outraged dignity, band members have to pay to have their uniforms cleaned and apple juice causes stains. It is things of that sort that makes the public suspicious of college students, and it certainly doesn't help a school. If you'd use your excess energy yelling you'd have just as much fun and your efforts would meet with everyone's approval.

When the Shockers finished with Southwest Saturday night, a lot of people more firmly believed that we have come of age and are too big for the Central Conference. Rumor has put us on the verge of going into the Missouri Valley conference for several years and this season should be an excellent test of how we would fare in fast company. Four Valley teams appear against the Shockers and if the schedule wasn't purposely arranged for a test it was a beautiful accident. St. Louis University who has three



times beaten the Shockers and last year tied DePaul plays here Saturday and it promises to be one of the toughest games on the schedule. The team will need plenty of support, and in return they'll give out enough thrills to pay you for your time. Give the boys a break. Open up and yell a little. It might help.

Either the experts that are picking Notre Dame to win the national championship are right or the current edition of the Kansas Jayhawkers are more lousy than usual from the way that score looked at the end of the game. Incidentally that 52-0 count was the worst beating any Kansas University team ever took. I'll bet the depot was awfully lonely when the Jayhawkers came back to Mount Oread.

We seem to be well started on our usual football season. When the cheerleaders try to get the students to yell it sounds like the whispering of a gentle breeze and when a few of us do feel moved to cheer the leaders are having a huddle down behind the bunches. I've been trying to decide for a long time what happens in those yell leader huddles down there. They can't be watching the game. There is one ray of hope though in Whook, a new men's pep organization, is about to get under way and it will, I hope, be more successful than pep clubs in the past have been. If Whook can get any pep out of most of the Shocker fans I'm for it 100 per cent.

WICHITA-BUILDERS ONLY LOOP GAME

Shockers Have Big Margin To Win First Game

CONFERENCE STANDINGS
Wichita 1 0 1.000
Emporia Teachers 0 0 .000
Fl. Hays State 0 0 .000
Pittsburg Teachers 0 0 .000
Southwestern 0 1 .000

Saturday night's Southwestern-Wichita game has been the only action so far this season in the Central Conference, and no games will be played in the loop this weekend.

Wichita in their impressive 65-0 drubbing of Southwestern looked like a potential champion eleven, but from the way the conference teams have been playing in early season games, the Shockers may have some trouble in annexing their second title in a row.

South Africa is warning on race track betting pools.

HOCKEY VARSITY WILL PLAY AT KANSAS U.

That a hockey varsity representing the University will be selected to attend the University of Kansas invitational hockey sports day and umpiring conference to be held there on Saturday, Oct. 22, was learned this week from Evelyn A. Hinton, instructor of women's physical education.

Other teams to be represented at Lawrence are those of Washburn, Baker, Ottawa, K. S. T. C. Pittsburg, Friends, Wichita Hockey Club, and the Kansas City Hockey Club. Rating officials of the umpiring conference will be Miss Hinton, Mrs. Ruth Hall, member of the Wichita Hockey Club, and Ruth Hoover, director of women's physical education at the University of Kansas.

Texas Christian Shot Putter
Practices Form Before Mirror
Puss Erwin, Texas Christian University ace shot-putter, practices form 15 minutes a day in front of the mirror.

TOUGH SCHEDULE IS ARRANGED FOR FRESHMAN TEAM

Drop First To Sterling; Oklahoma Team Is Next on List

With the biggest freshman football squad in years, both in size and number, working out daily, "Pike" Gawthrop, frosh coach, has arranged a five-game schedule that will give the yearlings valuable experience for next year.

With their first game already past, the boys are working hard to win over the tough Tonkawa Junior College outfit Oct. 7 on the local field. In the first game of the season the Shocker frosh dropped a 12-0 decision to Sterling College last Friday.

On Nov. 14 the frosh tangle with Coffeyville Junior College here in what will be one of their best games. The following week they go to Tulsa to meet the powerful Tulsa University freshmen.

A game is tentatively scheduled with Washburn frosh at Topeka, and if it is definitely arranged, it will complete the schedule.

FROSH GRIDSTERS HURT IN WORKOUT

Jancheff, Logan Seriously Injured Monday

Two of the most serious football injuries to occur this year resulted from a scrimmage in freshman football practice Monday afternoon.

Tommy Logan, one of the promising halfbacks on the yearling squad broke a bone in his left ankle on one play and immediately following that injury Johnny Jancheff, freshman end from Turtle Creek, Pa., fractured a vertebrae. Both boys are in a local hospital and the injuries will keep them out of practice for several weeks.

Both held down regular positions on the freshman squad and will be missed when the frosh schedule gets under way.

K. U. Rushes Must Live in
Corben Hall During Rush Week

All University of Kansas women who wish to pledge sororities must live in Corben Hall during the entire rushing period . . . exceptions only town girls who have established residence in Lawrence. A charge of \$5 for the five days includes bed, mail, and telephone service . . . quote the Kansan.

ORCHESIS INVITES NINE TO PLEDGE

Orchesis, modern dance organization, has asked the following girls to pledge: Bette Talbot, Virginia Chitwood, Georgiana Anderson, Jean Hickie, Betty Dean, Marjorie Krueger, Dorothy Taylor, Mildred Stokely, and Norma Tebeau.

This is the largest pledge group Orchesis has had since becoming a production unit, according to Nellie Girvin, president. The modern dance group, which is under the direction of Hildegarde Lewis, sponsor, meets every Tuesday at 4:15 p. m.

A newly organized group, known as the Lion Tamers, is opening membership to those University women not interested in modern dance production but the fun and exercise derived from it. The Lion Tamers, sponsored by Gladys Taggart, director of women's physical education, meets weekly on Monday at 5:30 p. m.

STERLING TAKES FIRST, BUT TEAM SHOWS PROMISE

Frosh Gain More Though Lack Scoring Power In 12-0 Loss

In a game which seemed to be nothing but a series of bad breaks, the University freshman team opened a five-game schedule at Sterling last Friday, and lost 12-0.

"Pike" Gawthrop, freshman coach, and all-Central quarterback last year, has one of the largest and most promising frosh squads in the history of the school, and with the development of a scoring punch, they ought to go places in their next four games. The frosh played with two stars, Jancheff, an end, and Logan, halfback, on the bench on account of injuries.

Wichita had a tremendous edge in scrimmage, gaining 190 yards to 90 for Sterling, but they lacked the punch to punt the ball across the line when they got close to pay dirt.

Rockefeller Foundation Grants
\$18,000,000 for Latin-America
The Rockefeller Foundation has made a grant of \$18,000,000 to American University to bring government employees of Latin-American republics to U. S. for study of our government.

Student Special Get a Photograph—Free

By bringing This Ad to Our Studio we will give a 2x3" new size Photo FREE. No purchase necessary. Just come in and get acquainted.

A-Smile-A-Minute Studio

132 N. MARKET

F. X. BUSCH'S SHOE REPAIR

119 South Topeka Ave. We Call for and Deliver

LET YOUR TELEPHONE BE YOUR SHOE SHOP

3-8234 3-8234

Have Your Call in by 9:30—Back the Same Day

Sports Wise

By Katy Dedrick

AND THIS year Miss Hinton, the intramural manager, the intramural council, and some of the interested participants mean it when they say that those not playing horseshoe games on time will be scratched from the tournament without overtime begging to "please play your match so the tournament can go on."

In all past tournaments in which there has been individual competition, players have constantly been begged, humored, and threatened to play matches at least a month after the scheduled time—but this year there's to be a new deal. If there are any first-round horseshoe matches not played by Friday, Oct. 7, 1938, A. D.—they will be struck (off) and chalked up against the players' societies as forfeits.

Participation points will not be given to organizations whose representatives have forfeited. So it might be the best policy for all concerned to take heed to Miss Hinton's "war-ning."

FUTURE inter-class hockey tournament competition is looking up as the sophomores rally round and appear at practices. Melcher says she plans to learn the rules this year.

But the team that the junior-senior squad is worrying a bit about is the frosh eleven. A full team of frosh hockey-stick wielders have been reporting for practice—plus many subs. Freshmen Hockey Manager Hartman has been doing some excellent stick work in the scoop form. Another yearling threat is the youngest Strickland, who seems to know all about taking the ball down the left alley.

GO BY BUS

Cheaper by Far Than Driving a Car and Seven Times Safer

UNION BUS DEPOT

Brdwy, at William Phone 3-3231

Miller Recreation

Kansas' Largest and Finest Where Wichita Plays

LUNCHES

20 Brunswick Tables Third Floor, Miller Building

WE, TOO, OFFER Service

—service of a high grade, based on the firmest of firm foundations—experience in dealing with the kind of buyers who want merchandise, plus. Our promise to deliver your work is always kept.

WICHITA EAGLE PRESS

"A Complete Individualized Service"

TELEPHONE 2-4431

Win—Lose or Draw—
You're Ahead If You Stop at Van's After the Game
1225 E. Central

SEE—
The University of Wichita
VS.
Saint Louis University
West Stands \$1.12 Tax \$1.68 Included Bleachers 40c
SAT. NIGHT 8 P. M.
Downtown Ticket Office Open Every Day from 8 a.m. to 5 p.m. Through Saturday
Wichita University Stadium

"Sign up with these . . . you could man a fleet with the fellows asking for Chesterfields today!"
Millions of smokers are signing up with Chesterfields . . . glad to find a cigarette that has what they want . . .
refreshing MILDNESS better TASTE pleasing AROMA
And here's why . . . Chesterfields give you the best ingredients a cigarette can have . . . mild ripe tobaccos and pure cigarette paper.
They Satisfy ..with MORE PLEASURE for millions

PAUL WHITEMAN Every Wednesday Evening
GEORGE GRACIE
BURNS ALLEN Every Friday Evening
All C. B. S. Stations
EDDIE DOOLEY Football Highlights Every Thursday and Saturday 52 Leading N. B. C. Stations