

DINNER WILL BE GIVEN FOR W. U. ALUMNI

Dinner at Hutchinson Will Entertain Alumni and Former Students

EXPECT MANY GUESTS

Given by State Teachers Association Friday November 4

Hutchinson, Kansas will be the scene of the University of Wichita dinner, to be given by the State Teachers Association on November 4, 5:30 o'clock. Alumni, former students, and friends of the university will attend from all parts of the state. Reservations may be ordered from Dean Leslie B. Sipple at the university, any time this week.

Faculty members and students may enroll in the Kansas State Teachers' association and pay enrollment fees in the College of Education office, according to Dean Sipple. Enrollment blanks have been recently delivered there from Secretary Pinet of the association.

Dr. Carl R. Hillbrand has an available copy of the program which is to be held in the Spanish language room of Sully's grill at Hutchinson.

Between thirty and forty guests have already purchased reservations, with the list being limited to a possible one hundred guests.

Franklin S. Carlton, principal of Harrison school, will be at the dinner. Mr. Claude Kiskadee, superintendent of the Caldwell schools, will extend greetings from the older alumnae. Roy Schuessler will sing group of numbers as a main feature on the program, followed by net addresses from Dean Sipple, Mr. Hillbrand, Mr. Hickerson, and Mrs. C. A. Mahin.

Members of the alumnae will afterwards be asked to give ex-temporary greeting or speeches to the assembled guests.

PEP CLUB NAMED SHOCKING SUSIES

Controversy Over Pep Club Name Definitely Settled by Club

"Shocking Susies" will be the name of the girls' pep club, it was decided at last meeting. A petition sent to the student council requested that the standard uniform remain the same for the next year. The uniform approved by the members of the pep club will consist of a black and gold sweater, a black skirt, and a black hat. These uniforms will be worn by the members of "Shocking Susies" and by the members of the drum and bugle corps as well.

Plans are now being made for the pep club which the organization will present at the Homecoming on Thanksgiving Day. Miss Katherine Gelbach, day, is in charge of the arrangements and plans for the stunts. She is being assisted in completing plans for their first appearance by the officers who are Miss Elva Lee Compton, president; Miss Rosemary Warren, secretary; and Miss Adeline Warren, treasurer. A new pep song was introduced to the club at the last meeting by Miss Adeline Warren who composed it. The new uniforms have been ordered and will be on exhibition when the pep club makes its first appearance in uniform at the Wichita-Southwestern game, according to Miss Gelbach, leader.

Dr. out will be held in the immediate future for the selection of a leader of the girls' drum and bugle corps.

HENRY W. ALLEN TO SPEAK AT MEETING

Henry Ware Allen, nationally known authority on income tax and sales, will speak on "Income Tax" at the joint meeting of the Political Science and Business Administration clubs of the university. Mr. Allen is one of the outstanding speakers of the single tax plan for raising revenue. Mr. Allen is well known on this question because of personal friendship with Henry George, economist, according to all Holgeron, president of the Business Administration club, who were recently elected as: Emil Holgeron, president; Paul Keasling, first vice president; Wayne Watson, second vice president; Gerald Kepner, treasurer; and Bill Smith, secretary.

OMNIBUS COLLEGE TO HOLD REUNION

Former students of the Omnibus College will gather at the Omnibus home next Friday and Saturday for an annual reunion of the Omnibus College. More than 400 attended at last year.

A real old time dinner, followed by a political party, will be offered by the college. Dr. and Mrs. William Goldsmith acting as hosts.

FORMER W. U. STUDENT WINS RADIO CONTEST

Roy A. Schuessler, member of the graduating class of 1931, won first place last week in the men's division of the seventh annual Kansas elimination of the Atwater Kent radio audition at Topeka. The winning of this contest makes Mr. Schuessler eligible for competition in a regional elimination to be held next month at Dallas, Texas.

Mr. Schuessler, who is now instructor in physical school music at Clearwater, received his A. B. degree in education. During his four years of college Mr. Schuessler was prominent in many campus activities. He was a member of the men's glee club and the Minerva chorus. He won signal recognition for his musical ability while attending Northwestern university during the past summer.

Mr. Schuessler was also prominent in dramatics, appearing in the Shakespearean play, "Winters Tale," in addition to several other productions. Besides his school activities, he directed the choir of the St. Paul's Methodist church for two years.

PLEDGES ARE ANNOUNCED BY KAPPA DELTA PI

Three Faculty Members and Ten Students Are Pledged

SIPPLE IS SPEAKER

Thirteen pledges to membership in Kappa Delta Pi, national education fraternity, were announced last Thursday at a meeting of Gamma Rho, local chapter of the organization.

Faculty members pledged to membership are: Mrs. Amy McIntire Mahin, assistant professor of education; Frank R. Hickerson, assistant professor of education; and Dr. Carl R. Hillbrand, dean of the graduate school.

Student pledges are: Miss Kathryn Fossett, Lester Dawson, Miss Katherine Devine, Miss Mildred Hampton, Miss Opal Highberger, Elmore Martin, Garner Shriver, Miss Mary Sipple, Miss Harriet Treweke, and Maurice Waugh.

At the meeting in Fiske hall a short business meeting was held by the active members. Resumes met for the first time, after which initial instructions concerning membership were presented.

Leslie B. Sipple, dean of the college of education, spoke on "What Kappa Delta Pi Has Meant to Me" as a part of the program which followed. Miss Elva Buskirk addressed the group, giving a student's viewpoint on the same subject. Miss Martha Jane Hinkle played a piano solo. The program was concluded by two song numbers by Cecil Enlow, accompanied by George Griffin.

The fraternity is composed of students on the campus who are prepared to carry a student's viewpoint to juniors and seniors who have maintained a "B" average and who have at least six hours of credit in the college of education.

The officers of the society are: Miss Elva Buskirk, president; Miss Doris Bainbridge, vice president; Miss Genevieve Wright, historian; Miss Macy Shippey, secretary; Miss Katherine Harris, treasurer; and Miss Wera Paul, reporter.

STAPLES EXHIBITS PAINTINGS AT K. C.

Clayton H. Staples, head of the art department of the university, took forty of his paintings to Kansas City, Friday to the art exhibit which the Art Institute of Kansas is conducting from November 6 to 28.

The exhibit will include the eight paintings made by Mr. Staples in Glacier National Park last summer, among them the picture of Lake St. Marys, which has become well known through the activities of the Great Northern railroad which has purchased the picture for use on its advertising folders and dining car menu cards. This picture shows a general view of the national park across Lake Upper St. Marys, which predominates in the picture.

The paintings made in Europe by Mr. Staples during his 13 months of work there will also be included in the art exhibit. These are scenes in Egypt, Africa, Spain, France and other European countries. One picture of the Grand Canyon in Arizona will be shown.

Mr. Staples spent 10 weeks in the mountains of the Glacier National Park last summer completing the eight paintings.

Mr. Staples spent 10 weeks in the mountains of the Glacier National Park last summer completing the eight paintings.

The participants in the contest and their subjects were: Miss Leona McDermitt, "The 18th Commandment"; Miss Clintine McCormick, "To Americanism"; Miss Lois McBratney, "The Supreme Test of Alcohol"; Miss Winifred Grace Allen, "Freedom"; and Miss Mary Lois Rynder, "Tear Away the Mask."

The judges were John Boyer, Miss Marjorie Stanton and Miss Thelma Bradshaw of Friends University.

Miss Florence Lambky was presented with a state prize of \$10 for the best temperance essay written in Kansas universities and colleges last year. The title of her essay was "The Psychology of a Drunkard."

ANNOUNCE WINNERS IN RECENT CONTEST

Miss Leona McDermitt won first prize and a silver medal in the oratorical contest sponsored by the College Hill Women's Christian Temperance union, which was held last Wednesday in convocation.

The participants in the contest and their subjects were: Miss Leona McDermitt, "The 18th Commandment"; Miss Clintine McCormick, "To Americanism"; Miss Lois McBratney, "The Supreme Test of Alcohol"; Miss Winifred Grace Allen, "Freedom"; and Miss Mary Lois Rynder, "Tear Away the Mask."

NEWSPAPER SHOW BEING PLANNED

Plans for an elaborate newspaper show, modeled after the one held last year, have been completed by the school of journalism of the university, and preparations have been started for the exhibit, which is to be shown next spring.

Letters have already been sent to over fifty newspapers over the country asking for representative copy of their paper. From this collection an intelligent comparison of the modes of writing can be secured.

A greater interest is expected to be shown than ever before, and journalists and others from many states who will be interested are expected to visit the show.

The men of Webster fraternity living at the fraternity house, gave a Halloween party at the house, Monday night.

BARBS ENTER PROTEST ON STUDENT COUNCIL POINT LIMIT ACTION

Squibb Calls Special Meeting of Council Today to Consider Non-Fraternity Petition

Student leaders will be forced to drop activities when their activity points exceed the number allotted by Student Council ruling if efforts of the Barb Vigilance committee to secure a more equitable proportioning of student honors are successful.

Definite protest will be taken against the action of the Student Council in postponing action in the matter, according to Merrill Bosworth, head of the committee who attended the meeting Monday night. "The non-fraternity students feel that their representation in student activities is hampered by the 'hogging' of campus jobs by fraternity members," said Bosworth.

Following the motion that every student be limited to the number of points permitted in the ruling, stated Bosworth, the Council was forced to drop the matter because of lack of a quorum. "The Barb" committee would receive immediate action, according to Bosworth, "especially" if the action of members of the Council in leaving the meeting to prevent action. We feel that as long as there is a rule, it should be observed."

George Squibb, president of the Council, in answering the petition for the Council, stated that the matter would receive immediate consideration from the student government and issued the following statement concerning the action, explaining that members of the Council who were carrying too many activities would act at once to come within the limit:

"Since the vice president and myself were found to be carrying too many activities, I shall resign from an office and shall also derive myself of Varsity debating to meet the requirements. I am sure the vice president will do as much. These changes will clear the Council members of any violation of the rule from the president on down. Members of the student body who fall within the category of those exceeding the activity point requirements will be acted upon at an open meeting of the Council at 2:00 o'clock Wednesday."

The petition, with the signatures of twenty-six non-fraternity students, was presented to the Council and the names of six students were proposed as carrying too many activities by Miss Alberta Bainbridge, chairman of the activities committee.

The students whose names were proposed by the committee were Tom Croft, Oliver Witterman, Genevieve Wright, and Razelza Klepper. This list was reduced to five by striking off the name of Croft, whose activities were found to be within the required limit.

Because of internal strife in China, Mr. Feng was cut off from his income. Through the efforts of the university, aid was obtained from the Emergency Relief committee for foreign students in New York which functions for the benefit of the foreign students in this country.

CHINESE STUDENT OBTAINS POSITION

Pang Yen Feng, who received his masters' degree in education from the University of Wichita, left last Friday for his home in Foo Chow, China, where he will accept a government appointment to teach in one of the outstanding universities in China. Later Mr. Feng will return to the United States to work on his Ph. D. degree in education.

Mr. Feng received his bachelor of arts degree from Southwestern college at Winfield. Following this, he came to the University where he was a popular student on the campus.

NEW DANCE CLUB TO GIVE PROGRAM

A dance club which is contemplating going national, has been organized on the campus with Olun Ambrose as president, and Helen Seward as secretary. The possible date for a benefit program has been chosen for December 7, at which time representative work of the group will be presented to the public.

The club, organized last year, and becoming active this year, hopes to become nationally known in the future. The University of Wisconsin has been written as to the requirements of such an undertaking. Such associations are honorary, and a club may join only after complying with certain strict rules.

The program at the coming entertainment will probably consist of about ten numbers, which will include lyric, dramatic, and rhythm studies. To obtain further variety, solos and duets, besides group numbers will be featured. Music will be taken from sketches by Dean Leclercque, who has presented will be almost entirely original.

Fourteen persons make up the dance club, and no new members will be taken in until after the entertainment has been given. After such time, tryouts will be required before a person has a chance to be associated with the group. Meetings are held Wednesday evenings.

Mr. Staples spent 10 weeks in the mountains of the Glacier National Park last summer completing the eight paintings.

The participants in the contest and their subjects were: Miss Leona McDermitt, "The 18th Commandment"; Miss Clintine McCormick, "To Americanism"; Miss Lois McBratney, "The Supreme Test of Alcohol"; Miss Winifred Grace Allen, "Freedom"; and Miss Mary Lois Rynder, "Tear Away the Mask."

NEWSPAPER SHOW BEING PLANNED

Plans for an elaborate newspaper show, modeled after the one held last year, have been completed by the school of journalism of the university, and preparations have been started for the exhibit, which is to be shown next spring.

Letters have already been sent to over fifty newspapers over the country asking for representative copy of their paper. From this collection an intelligent comparison of the modes of writing can be secured.

A greater interest is expected to be shown than ever before, and journalists and others from many states who will be interested are expected to visit the show.

The men of Webster fraternity living at the fraternity house, gave a Halloween party at the house, Monday night.

DIRECTORIES TO BE OUT NOVEMBER 16

Student Directories will be available Wednesday, November 16, according to Duane Wallace and Marion Rape, chairmen of the committee for the publication of the directory. A new financial organization for publication of the booklet has been instituted this year.

Under the new plan, a cooperative policy has been inaugurated under which each fraternity and sorority will forward \$5 toward publication. Following publication of 65 copies of the directory will be placed at the disposal of each fraternity and sorority. The new plan succeeds the former policy under which the Y. W. C. A. and the Y. M. C. A. backed the publication.

Names, addresses, telephone numbers and classification of student and faculty members, as well as the members of the board of regents, will be included as previously.

Charles Millham was business manager of the publication last year.

FIFTY STUDENTS MEET FOR DEBATE

Will Continue Meetings for Several Weeks; Study World Problems

Approximately fifty students met at the University College building, Wednesday evening, October 27, for debate try-outs. These meetings will continue for a period of six or eight weeks.

Two hours were spent outlining preliminary plans for following sessions, including lecture and study plans. The plans consist of the study of the history of the World War, war debts, war loans, such documents as the Versailles treaty, the moratorium, and the policy of the United States government toward the cancellation of the war debts.

First session were: Lisle Morris, Miss Mary Arden Threlfall, Carl Johnson, Monte Parks, Miss Ruth Sponenberg, Dean Banta, Marc Sandusky, Charles Avery, Miss Clintine McCormick, Miss Mildred Hampton, Miss Jamie Sproat, James Reddell, Miss Natalie Ring, Miss Razelza Klepper, Miss Mary Lois Rynder, Frances Householder, John Ewell, Mr. and Mrs. Otto Taylor, Miss Donna Powell, Will G. Price, H. K. Lindley, Charles Millham, Miss Lucille Custer, Miss Margaret Heigerson, Miss Kathryn Schrader, Tom Croft, Clayton Walton, George Squibb and Oliver Witterman.

Others who were unable to attend the first meeting are invited to meet at the next session, which will be held in room 201 of the University College building from 7:30 until 9:00 o'clock.

Miss Grace Wilkie, dean of women, is chairman of the program committee for Parents' day. The general committee for the day which is assisting Miss Wilkie in completing arrangements includes Thurlow Leclercque, dean of the College of Fine Arts; Frank A. Neff, dean of the College of Business Administration; Earl K. Hillbrand, dean of the graduate school; Dr. Hazel Branch, professor of zoology, and Miss Jacqueline, professor of French. This committee will be augmented by sub-committees which will be appointed sometime this week.

The musical program for the afternoon will be composed of music by the concert band which will include 60 members, by the mixed chorus of 70 voices, by the men and women's glee clubs, and by the string ensemble. The selections these organizations will offer will be announced next week.

Panhandle Teachers Hear Hillbrand Speak

Dr. Earl K. Hillbrand, dean of the graduate school, spoke on "Problems of Adult Education" before the Panhandle Teachers association at Guymon, Okla., Saturday morning, October 29.

School teachers from all over the state of Oklahoma heard Dr. Hillbrand's talk since it was the occasion of their annual meeting.

Old Time Jinx Is Revived with Annual Football Game

The "Jinx" is dead but its spirit lives! This black omen of disaster originated back in 1912 when the Moundbuilders of Southwestern college at Winfield scalped the Fairmount college Wheatshockers to the overwhelming tune of 41-3 marking the first defeat ever handed the Wichitans by the Winfield gridmen.

Inaugurating football competition between the two schools in 1911, it was dreamed that the rivalry would ever become so tense and live to be 50 years old. From that time the Wheatshockers were never beaten until that fatal year of 1912 when the "Jinx" was born.

Jubilation reigned in Winfield following this victory over the Fairmounters and in all their jocular celebration a number of gallant lads of Winfield found an old slab of limestone. Paint was daubed over its face in anything but an artistic style.

The ungraceful piece of art centered on this stone was the figure of a wild black cat wearing a yellow bow-tie. The overline fitting this achievement was smeared in large black letters "Hoodoo." Below appeared the following: "Nov. 11, 1912 Score 41-3." That evening this slab of limestone was buried in the Mound Builder cemetery, and "the Jinx" was born.

Although the original Jinx is dead and gone, the spirit still lives. Both teams are still conscious of the "spirit of the Jinx" each year and Southwestern men still enforce the custom of burying a huge limestone slab inscribed with victory in their graveyard after each victory over the Wichitans.

The Jinx has been down a number of times by both teams although Winfield has beaten the Jinx the last three years. Last year the Shocker were doped to beat the Winfield by a one-sided score but only after a terrific battle did they down the Jinx by one lone point, 7-6. Dope never holds true with these arch enemies. Will the Jinx live this year?

Spirit of Jinx Hovers Near



FRIDAY THE JINX will clatter from its tomb and clank around for that day when ancient rivals meet in the annual Southwestern-Wichita football game. The spirit of the jinx will attend the Wichita warriors in their battle to avenge past defeats at the hands of their ancient and time-honored rivals. The sacred stone is shown above, reproduced from an old photograph.

DR. FOGHT GOES TO COLLEGE MEET

Attends Meeting of Urban Universities at St. Louis, November 4 and 5

Dr. H. W. Foght, president of the University of Wichita, will represent the University at the annual meeting of urban universities to be held November 4-5 at St. Louis, Missouri.

Problems arising from the general economic stress of the country that have a bearing on the status of urban universities will be the chief topics discussed and decided.

The association of urban universities includes the 12 municipal universities of the United States as well as many larger city institutions such as Columbia University of Pennsylvania, University of Minnesota, Boston University, Brown University, Washington University at St. Louis, St. Louis University, Denver University, University of Southern California and many others.

The first municipal universities were the University of Louisville and the University of Charleston, Charleston, S. C. The other municipal universities in the United States are University of Buffalo, New York; University of Cincinnati, Cincinnati; O. Hunter college, New York City; College of the City of New York; University of Toledo, Toledo; University of Wichita, Wichita; Kani, University of city of Detroit, Detroit, Mich.; and the University of Omaha, Omaha, Neb.

A large per cent of the voters' ballots are thrown out at every election due to carelessness, or ignorance of the voting technicalities.

"This booth should be of great educational value to all university students whether of voting age or not," said Miss Robertson.

In case a voter makes a mistake another ballot may be furnished, though only three ballots may be given to any one voter. Seven important "don'ts" to voters are as follows:

1. Don't mark the cross outside the square.
2. Don't put a cross in a square after a blank space.
3. Don't write in a name without voting with a cross.
4. Don't mark down a half a cross, and then mark the cross in some other square.
5. Don't use a check mark instead of a cross.
6. Don't deface ballot with pencil.
7. Don't use ink instead of a pencil.

SHOCKERS HEAR OF FOOTBALL JINX

Recalling previous W.-S. Southwestern games, Julius Simonet, senior in the University, today told the students, during part of the convocation period, of the jinx between the two colleges. "Reminiscences of former W.-U-Southwestern Games" was the title of his speech. In it, he described the former games, and told the audience the things which were done in the past by the students of both schools. He informed the assembly that Wichita had won for the past three years, and that if the spirit of victory favors the University for the fourth consecutive year, the Moundbuilders will go home defeated, and the Wichitans will again be victorious.

Mr. Simonet also told the freshmen about the University of Wichita who were thought by the students of Southwestern to have painted their campus. As a result of this particular raid, the heads of the Shocker were shaven, and the men were locked up in a garage for two or three days. When they returned to Wichita, they were badly beaten men.

After the speech, Homer Hubbard, director of public school music, led the audience in community singing, and Johnny Burris, and Lloyd Hall, cheerleaders, led the yell.

Miss Grace Wilkie, dean of women, and Miss Edith Jacobs, secretary to President H. W. Foght, were tea guests of the Webster fraternity last Monday.

University Featured in Wiley's Bulletin

The administration building of the University of Wichita is pictured in the Wiley Bulletin published in New York, on one page of a recent issue which shows views of several new college buildings. The Wiley Bulletin is issued in the interest of education by John Wiley and Sons, Inc., scientific publishers.

SQUIBB CALLS IN PETITIONS FOR QUEEN

Council Pep Committee Makes Arrangements for Homecoming

HOLD PEP RALLY

November 24 Is Date Set for Annual Reunion of Students, Grads

All names of candidates for Homecoming Queen must be submitted on a petition bearing 25 names before Monday, November 7, to George Squibb, president of the Student Council.

The student council will have charge of all arrangements for Homecoming this year which will be Thanksgiving, November 24. Will G. Price, chairman of the pep committee, is general head of formulating plans for Homecoming. There will be no faculty committee this year but all details will be taken care of by the students.

Homecoming Queen will be elected by regular ballot by the students. According to the present plans, the queen will be presented at a special ceremony before the final pep event of the afternoon preceding Homecoming varsity which will be held in the evening of Homecoming day. Prizes for the best decorated sorority and fraternity houses will be awarded at the varsity by the committee which will judge the houses during the dance to decide which in each division is the best and most appropriately decorated for first and second prizes.

A class clash between the freshmen and sophomore classes will take place at the pep rally and bonfire which is scheduled for the night before Homecoming. At this time, if the sophomores win the tug-o-war, the freshmen will wear the traditional green caps and ribbons until Christmas. However, if the freshmen win, they will discard the caps and ribbons at that time.

Pep Club Presents Stunt

Between halves at the Washburn-University of Wichita game in the afternoon, the Shocking Susies, women's pep organization, will present their pep stunts. These are: Miss Mary Katherine Gelbach, president of the Shocking Susies.

Mr. Price has the following as his committee to complete the program for Homecoming: Miss Alberta Watkins, Miss Bettina Bosworth, Miss Gelbach, Miss Kathryn Templeton, Terry Wells, Clifford Stoner, Lee Tucker and Mano Stuke.

NEW METHODS TO TEACH ENGLISH

James M. Walsh Writes New English Tests for High Schools

To improve current methods of teaching English grammar and composition, J. M. Walsh, instructor in English in the downtown division of the University of Wichita, has collaborated with his daughter, Miss Kathleen Walsh, instructor in English at the Liberty high school in Hutchinson, in the field of history of English literature. Mr. Walsh has covered material of four high school years in his eight new-type tests.

C. W. O'Dell, associate professor of education at the University of Illinois, is general editor of the tests.

An effective heart, to record the work of the individual student, showing marked deficiencies and also his best work, is also published by Mr. Walsh. A record of the studies written by the student is kept, showing points to be improved upon.

Recognizing the value of the tests and chart in teaching English, schools and teachers have accepted these tests as an aid to them in their work, and they are now being widely used.

CHANGES MADE IN SUNFLOWER STAFF

At least two changes in the personnel of the Sunflower staff will be made at the regular meeting of the Board of Publications, Wednesday afternoon. The two editors elected then will replace Miss Dorothy Kyle, women's sports editor, and Virgil Prioboth, men's sports editor, whose terms will expire November 9th.

Miss Kyle and Mr. Prioboth were elected at the middle of the spring semester last year and re-elected for nine weeks this fall.

No editors are re-elected for more than one term. All assistant editors are chosen for a period of nine weeks, while the editor-in-chief and the business manager are chosen for a period of 18 weeks.

Conference March Continues Against Jinx and Builder

SHOCKERS MUST WIN OVER SOUTHWESTERN TO STAY IN RUNNING FOR HONORS

These Ancient Rivals Clash Friday Afternoon on Stadium Field in 26th Annual Game; Favor Builders with the Strongest Line

GAME AT 2:30; EXPECT LARGE CROWD

Opening their final drive toward another Central conference championship, the University of Wichita Wheatshockers meet the strong Southwestern Moundbuilders in their annual grudge battle with the Builder Jinx next Friday afternoon on University field.

For three years Southwestern has tried to rejuvenate the age old Jinx tradition and the battle Friday will make the fourth trial since they were beaten by Wichita in 1929.

Dope, which never runs true in these annual battles, greatly favors the Winfield team to break the long string of Shocker victories. At the start of the season Southwestern held Pittsburg to a tie while Wichita was unable to score against the Gorillas. Besides this Coach Gebert's eleven is known to have a weak forward wall which is the strong part of the Builder team.

But anything can happen in one of these contests. Last season the Hillmen had one of their strongest teams while Southwestern had a weak one. However, when the two teams met it was the Shocker team which found itself in trouble because of the hard fighting of their opponents.

Passes Upset '26 Game
The same thing has happened in these past games. Back in 1926 the Wheatshockers were leading by two touchdowns, 13-0, when Money-penny's men unleashed an aerial attack and succeeded in ending the game in a tie. These are only two examples of how the black omen of the Jinx always hovers over a Wichita Builder till, with the unexpected happening and the dope compiled by experts being upset.

This year it is the Shockers' turn to come from behind and upset the dope which is against them. For several days Coach Gebert has been working the squad on several new scoring plays, the most important being a new aerial attack with McLaughlin and Hunter doing the passing. Both of these men are experts and a win may result.

Southwestern in turn has an offense almost equally as good as their defense. In Mesch and Baltzell Coach Money-penny has two players who are good at both running and passing. It was this same Baltzell who literally tore up the Wichita line in last year's game while Mesch was an important cog in the Builders' last victory three years ago.

However, the Shockers probably have the best backfield with plenty

of reserves ready to go at any position. With Koch, Walker, and Anderson calling signals the Shocker mentor has three reliable quarterbacks. The fullback post is also well taken care of with Virgil Wilson, Fulton and McLain handling the line smashing assignment.

At the halfback berth McLaughlin, Captain Hunter, Gorman, Neely, Kornhaas, and Stuckey are all fast shifty men and are efficient in working an aerial attack.

Kain, Husky Tackle, Lost
The line is still worrying the Shocker mentors. An injury to Kain, giant tackle from Liberal, will keep him out the rest of the season with a broken hand.

Beeman and Grubb at the flank posts have been going only fair this year with the former still having to show the game which landed him on the All-Conference selections last season. Shadown, with Ford, at tackles have both been playing fairly strong while the guards, Fankhauser and Shadown were above par in one of two games and turned in brilliant exhibitions.

At the center post again will be Dugan who has been going at a fast clip since replacing Pechin who was injured in an early season game. Dugan is showing up nicely and will be fortified by either Booth or Collins, maybe both.

The Shockers are slight underdogs and a large crowd is expected to watch them in their conference march. Reports indicate a large crowd from Winfield will accompany their Jinxsters to Wichita. The game will get under way at 2:30 p. m.

HOCKEY TEAM WINS IN FINAL MINUTES

Scoring a goal in the last five minutes of play, the 1932 hockey varsity defeated the Wichita Hockey club last Saturday at the Wichita high school East field 2-1.

The varsity team showed unexpected strength in view of the fact that several of their last year's squad was absent, while the Hockey club found power lacking in their offensive play. If it had not been for an air-tight defense the score would have been much larger.

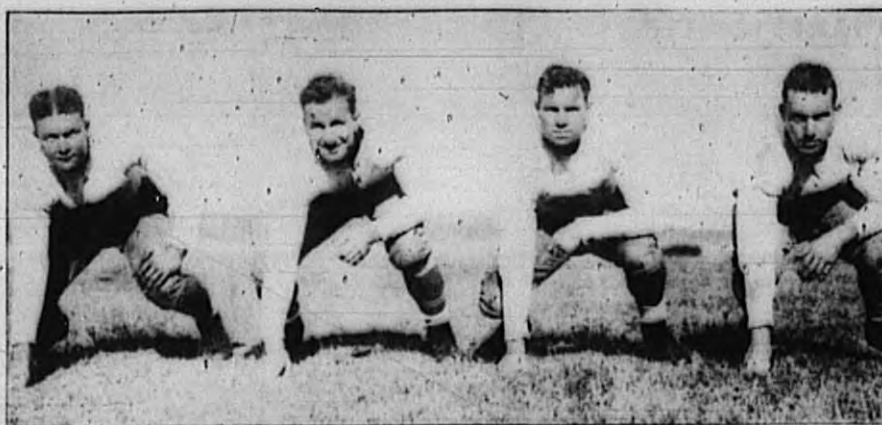
Wittman, who scored the winning goal, and Wyssbach played an excellent game for the winners, as did Murphy, goalkeeper. Hinton and Verhulst starred for the losers.

The first inter-class hockey game of the season was played Monday when the sophomores rallied in the close of the game and defeated the freshmen team 4-2. The score was tied at the half, 1-1.

The game was about even until the latter part when the more experienced sophs massed their strength and outplayed the losers. Richardson captained the freshmen while Van Arsdale led the sophomore women. In the varsity Wichita club game, the varsity was led by Hester and the Wichita club by Miss Evelyn Hinton.

Lineup:
Varsity
Center forward—Campbell
Left forward—Ward
Left inner—Kain
Right inner—Van Arsdale
Left wing—Wittman
Right wing—Murphy
Left half—Hinton
Right half—Hinton
Goalkeeper—Murphy
Hockey Club
Center forward—Brooks
Left forward—Smith
Left inner—Smith
Right inner—Smith
Left wing—Tanner
Right wing—Tanner
Left half—Martin
Right half—Martin
Goalkeeper—Smith

Moundbuilders' Backfield



THIS MOUNDUILDER BACKFIELD will battle the Shockers Friday in the annual Jinx game. They are, from left to right, Evan Thomas, Dick Baltzell, Merritt Mesch, and Keith Corp. Baltzell and Mesch are two of the most dangerous backs in the conference and will be feared by Shocker proteges.

SPORTS

With fans expecting two of the hardest battles of the season as the four leaders clash, the Central conference will reach its acme of interest this week—and when Washburn battles Pittsburg and Wichita is pitted against Winfield. There's no telling how this race will wind up but it's sure to be as thrilling as last year. With the toughest games on deck, anything may happen.

Four teams are still in the running and all have either lost or tied games which makes things still more complicated. Wichita's big hopes will be determined chiefly by Washburn. Wichita expects to beat S. W. and Washburn but Washburn must in turn give Pitt a loss to promote honors for the Shockers.

Dope has a positive value of nothing flat when it comes to calculating results on this annual Jinx game. In 1916, Wichita led 13 to 0 with five minutes to go. A bombshell of Builder passes exploded and when the smoke cleared and the game ended, the score stood 13 to 13.

Then, last year, Wichita beat Hays 61 to 0 who in turn tied S. W. 7 to 7, but in the big Jinx grudge game, the Wichita's 61-point advantage dwindled to one as they won 7 to 6. The Shockers had several "lucky breaks" at that.

Many are still wondering why "Chief" Hunter, our halfback captain, does more "bench-warming" than he does actual playing. Hunter is a great triple-threat grifter and is one of the headiest in the conference but McLaughlin's mean punting ability has given him an edge over Hunter. Times are frequent when an exchange of punts gives Wichita a gain in yardage that isn't easily made by straight scrimmage.

Two good men can't play the left halfback position at the same time. Gorman and Neely exchange jobs as the best halfback runners in line bucks while McLaughlin and Hunter take turns at kicking, running and passing. Savvy!

Here and there—Ottawa U. has a center by the name of Muddy Watters. . . Two Shocker star halfbacks of last year, "Big" Lockert and "Tip" Tucker, all-conference back, are playing football this year with the Southern Kansas State Lines team. . . "Tip" featured in their win over Harper Sunday. . . Ad Davis, former all-around East High athlete, figures in honors at Iowa university this year as a frosh. In the fall indoor intramural track meet, Davis won first in both the discus and shot-put to be high point man.

SECOND TEAM TRIMS EMPORIA YEARLINGS

The Wheatshocker yearlings journeyed to Emporia last Friday and stoned for last year's defeat when they scalped the Emporia Teachers' second team by the score of 18-2.

The passing of McLain, fullback, was chiefly responsible for the Shocker touchdowns. Each one was made directly from a pass or else a long pass placed the ball in easy scoring position. Wichita's gains were nearly all the results of passes.

Keith Fulton, brother of Earl Fulton, first string halfback, scored one of the touchdowns. Howard Pierce, a last year's star Shocker tackle, is coach of these Shocker seconds.

CENTRAL CONFERENCE STANDINGS

Teams	W	L	T	Pct.	Pts.	Opp.
Pittsburg Teachers	2	0	1	.833	34	9
Washburn	2	0	1	.833	25	8
WICHITA	2	1	0	.667	33	15
Southwestern	1	0	2	.667	13	7
U. of Emporia	1	3	0	.250	16	37
Emporia Teachers	0	3	1	.125	0	33

(The games count one-half won and one-half lost.)

GAMES THIS WEEK

THURSDAY
Emporia Teachers vs. Kansas Wesleyan at Salina.
FRIDAY
Southwestern vs. Wichita at Wichita.
Fort Hays vs. Kearney Teachers at Kearney, Neb.
College of Emporia vs. Ottawa at Ottawa.
SATURDAY
Pittsburg vs. Washburn at Topeka.

Southwestern-Shocker Feud 31 Years Old

University grid teams have been victorious 12 times and have tied 6 games of the 23 that have been played during the Southwestern college—University of Wichita football feud which ranges over a period of 31 years.

The University of Wichita which was then Fairmount college, was never defeated by Winfield until the game of 1912 when the Southwestern Moundbuilders stoned for past defeats by handing the Shockers the low end of a lopsided count of 4-3.

It was in this game that the much feared Jinx was born and has played a part in their annual games since that year. From then on the Jinx was beaten by first one team and then the other, honors being about even.

Although wins and losses were about even, the Jinx did have some effect on the Wichitans from 1915 to 1924 for during these years Wichita scored but one touchdown in seven games. The Jinx was last beaten by Wichita, 7-6, last year and this year's game gives promise of being as close.

Year	U. of W. S. W.
1902	0
1903	0
1904	0
1905	0
1906	0
1907	0
1908	0
1909	0
1910	0
1911	0
1912	0
1913	0
1914	0
1915	0
1916	0
1917	0
1918	0
1919	0
1920	0
1921	0
1922	0
1923	0
1924	0
1925	0
1926	0
1927	0
1928	0
1929	0
1930	0
1931	0
1932	0

Total points: U. of W. 11, S. W. 11

U. of W. 11, S. W. 11

U. of W. 11, S. W. 11

U. of W. 11, S. W. 11

U. of W. 11, S. W. 11

U. of W. 11, S. W. 11

U. of W. 11, S. W. 11

U. of W. 11, S. W. 11

U. of W. 11, S. W. 11

U. of W. 11, S. W. 11

U. of W. 11, S. W. 11

U. of W. 11, S. W. 11

U. of W. 11, S. W. 11

U. of W. 11, S. W. 11

U. of W. 11, S. W. 11

U. of W. 11, S. W. 11

U. of W. 11, S. W. 11

U. of W. 11, S. W. 11

U. of W. 11, S. W. 11

U. of W. 11, S. W. 11

U. of W. 11, S. W. 11

U. of W. 11, S. W. 11

U. of W. 11, S. W. 11

U. of W. 11, S. W. 11

U. of W. 11, S. W. 11

U. of W. 11, S. W. 11

U. of W. 11, S. W. 11

U. of W. 11, S. W. 11

U. of W. 11, S. W. 11

U. of W. 11, S. W. 11

U. of W. 11, S. W. 11

U. of W. 11, S. W. 11

U. of W. 11, S. W. 11

U. of W. 11, S. W. 11

U. of W. 11, S. W. 11

U. of W. 11, S. W. 11

U. of W. 11, S. W. 11

U. of W. 11, S. W. 11

U. of W. 11, S. W. 11

U. of W. 11, S. W. 11

U. of W. 11, S. W. 11

U. of W. 11, S. W. 11

U. of W. 11, S. W. 11

U. of W. 11, S. W. 11

TROUNCE TIGERS SCORING THRICE

Hays Takes Early Lead as Francis Kicks Field Goal

A rejuvenated University of Wichita Wheatshocker football squad awoke last Friday afternoon when the Fort Hays Tigers made a place kick to lead 3-0 in the first quarter of their annual tussle. Coming to after a Hays score, an inspired Shocker team drove through the Hays eleven and scored a touchdown in each of the last 3 quarters to win, 19-3.

In the first quarter, Hays rammed their way to the Shocker 11-yard line where they met a line of stone and resorted to a place kick which was perfect. This was their only counter and the closest they got to the Shocker goal.

The Wichita charges soon began functioning and played a much improved game. The Shockers were clicking well in the last 3 quarters and scored a touchdown in each of them.

E. Fulton made the first on a line plunge for 7 yards, following a pass to Koch. Neely went off tackle for the second touchdown, and the final one was made by Gorman's line plunge of about 4 yards.

It was the work of a vastly improved eleven that ran up the victorious count. The line played better than in previous games, with no particular player standing out.

The complete Shocker backfield played well as good work was performed by Koch, Neely, Hunter, Fulton, and others. Summary:

First downs	Yards lost	Yards gained	Passes completed	Passes intercepted	Yards from passes	Yards returned	Punts	Average length	Yards of punt return	Kickoffs	Yards returned	Fumbles	Recovered	Lineups:
WICHITA	12	10	10	1	10	10	10	10	10	10	10	10	10	10
PORT HAYS	10	10	10	1	10	10	10	10	10	10	10	10	10	10

The score by periods:
1st 3-0
2nd 6-3
3rd 10-3
4th 19-3
Total 19-3

Wichita scoring—Fulton, Neely and Gorman try for point after touchdown. McLain, Port Hays scoring—Field goal.

You'll find a lot of satisfaction in looking cheerfully on the dark side of life.

NOTICE

All men physical education students who did not take the recent physical examinations have another opportunity to do so without charge. Dr. Rombold will be on the campus each Thursday noon, 12:30-1:30 in the auditorium, room 101. Students may make regular appointments through the office of their respective deans.

IMPORTANT GAME THIS SATURDAY

Washburn and Pittsburg to Battle for Leadership of League

Unable to score against the tight defense of the Emporia Teachers last week, the Washburn Ichabods, battled to a 0-0 tie and now share honors with Pittsburg as leaders of the Central conference race.

On the other hand Wichita took advantage of Fort Hays to chalk up a 19-3 win while the Southwestern gridsters and College of Emporia turned in the second scoreless tie of the week.

The two Emporia teams both showed improved form and although doped to lose, put up a great battle and held their stronger opponents, Southwestern and Washburn, scoreless.

The University of Wichita is back in the running for the title after Washburn turned in a tie game. The Shockers must beat Washburn and Washburn in turn beat Pittsburg. The contest is getting hotter each week-end and any of the three leaders may clinch the title in the end.

The Shockers' hopes rest chiefly in the crucial Pittsburg-Washburn battle for league leadership this Saturday afternoon. Their own strength will be given a further severe test Friday when they meet their own arch rivals, Southwestern Builders, in a game which seldom runs true to dope. The Shockers

Women's Sports

Dr. Dorothea Kitz

The national Women's association will hold its meeting at the University this spring. The local is considering sending a to this meet.

Life saving classes start week. The first, second and six weeks periods include many instruction, swimming, and diving. The group of students is instructed by Miss Polk.

Miss Lucille Verhulst, education instructor at U. of W. There women have separate rooms equipped with length mirrors.

Miss Jean Van Arsdale, manager, announces the hockey schedules. They will battle the junior-senior November 7, and the senior November 11. November upperclassmen will play the sophomores and the on November 21 will see men and upperclassmen feature game of the scheduled for the morning when the 1932 varsity squad will play the Hockey club.

Miss Jean Van Arsdale, manager, announces the hockey schedules. They will battle the junior-senior November 7, and the senior November 11. November upperclassmen will play the sophomores and the on November 21 will see men and upperclassmen feature game of the scheduled for the morning when the 1932 varsity squad will play the Hockey club.

Miss Jean Van Arsdale, manager, announces the hockey schedules. They will battle the junior-senior November 7, and the senior November 11. November upperclassmen will play the sophomores and the on November 21 will see men and upperclassmen feature game of the scheduled for the morning when the 1932 varsity squad will play the Hockey club.

Miss Jean Van Arsdale, manager, announces the hockey schedules. They will battle the junior-senior November 7, and the senior November 11. November upperclassmen will play the sophomores and the on November 21 will see men and upperclassmen feature game of the scheduled for the morning when the 1932 varsity squad will play the Hockey club.

Miss Jean Van Arsdale, manager, announces the hockey schedules. They will battle the junior-senior November 7, and the senior November 11. November upperclassmen will play the sophomores and the on November 21 will see men and upperclassmen feature game of the scheduled for the morning when the 1932 varsity squad will play the Hockey club.

Miss Jean Van Arsdale, manager, announces the hockey schedules. They will battle the junior-senior November 7, and the senior November 11. November upperclassmen will play the sophomores and the on November 21 will see men and upperclassmen feature game of the scheduled for the morning when the 1932 varsity squad will play the Hockey club.

Miss Jean Van Arsdale, manager, announces the hockey schedules. They will battle the junior-senior November 7, and the senior November 11. November upperclassmen will play the sophomores and the on November 21 will see men and upperclassmen feature game of the scheduled for the morning when the 1932 varsity squad will play the Hockey club.

Miss Jean Van Arsdale, manager, announces the hockey schedules. They will battle the junior-senior November 7, and the senior November 11. November upperclassmen will play the sophomores and the on November 21 will see men and upperclassmen feature game of the scheduled for the morning when the 1932 varsity squad will play the Hockey club.

Miss Jean Van Arsdale, manager, announces the hockey schedules. They will battle the junior-senior November 7, and the senior November 11. November upperclassmen will play the sophomores and the on November 21 will see men and upperclassmen feature game of the scheduled for the morning when the 1932 varsity squad will play the Hockey club.

Miss Jean Van Arsdale, manager, announces the hockey schedules. They will battle the junior-senior November 7, and the senior November 11. November upperclassmen will play the sophomores and the on November 21 will see men and upperclassmen feature game of the scheduled for the morning when the 1932 varsity squad will play the Hockey club.

Miss Jean Van Arsdale, manager, announces the hockey schedules. They will battle the junior-senior November 7, and the senior November 11. November upperclassmen will play the sophomores and the on November 21 will see men and upperclassmen feature game of the scheduled for the morning when the 1932 varsity squad will play the Hockey club.

Miss Jean Van Arsdale, manager, announces the hockey schedules. They will battle the junior-senior November 7, and the senior November 11. November upperclassmen will play the sophomores and the on November 21 will see men and upperclassmen feature game of the scheduled for the morning when the 1932 varsity squad will play the Hockey club.

Miss Jean Van Arsdale, manager, announces the hockey schedules. They will battle the junior-senior November 7, and the senior November 11. November upperclassmen will play the sophomores and the on November 21 will see men and upperclassmen feature game of the scheduled for the morning when the 1932 varsity squad will play the Hockey club.

Miss Jean Van Arsdale, manager, announces the hockey schedules. They will battle the junior-senior November 7, and the senior November 11. November upperclassmen will play the sophomores and the on November 21 will see men and upperclassmen feature game of the scheduled for the morning when the 1932 varsity squad will play the Hockey club.

Miss Jean Van Arsdale, manager, announces the hockey schedules. They will battle the junior-senior November 7, and the senior November 11. November upperclassmen will play the sophomores and the on November 21 will see men and upperclassmen feature game of the scheduled for the morning when the 1932 varsity squad will play the Hockey club.

Miss Jean Van Arsdale, manager, announces the hockey schedules. They will battle the junior-senior November 7, and the senior November 11. November upperclassmen will play the sophomores and the on November 21 will see men and upperclassmen feature game of the scheduled for the morning when the 1932 varsity squad will play the Hockey club.

Miss Jean Van Arsdale, manager, announces the hockey schedules. They will battle the junior-senior November 7, and the senior November 11. November upperclassmen will play the sophomores and the on November 21 will see men and upperclassmen feature game of the scheduled for the morning when the 1932 varsity squad will play the Hockey club.

Miss Jean Van Arsdale, manager, announces the hockey schedules. They will battle the junior-senior November 7, and the senior November 11. November upperclassmen will play the sophomores and the on November 21 will see men and upperclassmen feature game of the scheduled for the morning when the 1932 varsity squad will play the Hockey club.

Miss Jean Van Arsdale, manager, announces the hockey schedules. They will battle the junior-senior November 7, and the senior November 11. November upperclassmen will play the sophomores and the on November 21 will see men and upperclassmen feature game of the scheduled for the morning when the 1932 varsity squad will play the Hockey club.

Miss Jean Van Arsdale, manager, announces the hockey schedules. They will battle the junior-senior November 7, and the senior November 11. November upperclassmen will play the sophomores and the on November 21 will see men and upperclassmen feature game of the scheduled for the morning when the 1932 varsity squad will play the Hockey club.

Shockers!
GAS
WITH US
Olmstead
Service Station

FRIED CHICKEN DINNER
Today
25c
With Vegetables and Salad
Also Short Orders
Manning's Lunch
Second Door South of Bookstore

DANCE
Every Night Except Sunday at Wichita's New
WINTERGARDEN
One Block Long, Neon Lighted
Tables Reserved Free—Dial 2-99-02
Mon.-Thurs. 15c Per Person