



Neil Cook—The Sunflower

A pea?

Once Upon a Mattress is WSU Summer Theatre's final production for this season. See story and related pictures on p. 10.

Alcoholism conference to host Buzz Aldrin

Edwin E. "Buzz" Aldrin, Jr., astronaut, engineer, author and recovering alcoholic, will be the featured speaker at the Summer Conference on Alcoholism at Wichita State University, August 3.

The conference, scheduled for August 3-6, is presented by The Addictions Program and the Center for Continuing Health Education at WSU in co-sponsorship with The Kansas Alcohol Abuse Unit of SRS and the Kansas Alcoholism Counselors' Association.

Aldrin, who flew twice in space as NASA astronaut and participated in the first landing and research on the moon in July 1969, is the author of *Return to Earth*, an account of his battle with alcoholism. He will speak in Room 208, Life Sciences Building, from 8 to 9:30 p.m. on Tuesday, August 3. The evening session is free and open to the public.

In addition to presiding over Research and Engineering Consultants, Inc., a Los Angeles firm which he founded, Aldrin, who holds a doctorate from Massachusetts Institute of Technology, serves on the board of directors of the National Association for Mental Health, of which he was chairman in 1974. He also serves as an advisor to groups concerned with the understanding of alcoholism.

He will address the conference designed to focus on innovative

approaches and techniques for The counseling of alcoholic clients. Programs in the four-day conference include information and skills needed at all points in the counseling of alcoholics from intervention through aftercare.

The conference is open to all alcoholism counselors and other interested professionals. Included in the \$30 registration fee is a copy of *The Alcoholism Rehabilitation Manual: A Whole Person Approach to Disability Treatment* by Steven DeAlmeida, coordinator of alcohol education and training at WSU's College of Health Related Professions department of community health education.

The conference will begin at 10 a.m. August 3, in Room 208 of the Life Sciences Building, North Yale Street, on the WSU campus. Deadline for registration is July 30.

For more information contact Lin Bertsch, Center for Continuing Health Education, College of Health Related Professions, Wichita State University.

This is the final edition of *The Sunflower* for the summer session.

The first publication of the fall semester will be Aug. 23, the first day of classes.

News items for the first week of classes should be submitted by Aug. 18. Contributions for *Images, The Sunflower Literary Page*, should be submitted by the same date.

Inside Today

- Camin campaigning.....page 2
- Petition rejected.....page 3
- Registration slate.....page 7

The Sunflower

Thursday

JULY 29, 1976
LXXX No. 89
WICHITA STATE UNIVERSITY

Lyle Gohn resigns

By JOYCE SMITH

Lyle Gohn, Wichita State University's current dean of student life and services, will trade Kansas' wheatfields for Montana's mountains September 1, when he will accept a position as dean of student affairs and services and associate professor in the College of Education, at Montana State University.

Before coming to Wichita in 1967, Gohn spent one year at Southern Illinois University, Carbondale, as director of student activities after completing his graduate studies in guidance and counseling at Purdue University. While a graduate student, Gohn served in several advisory and counseling capacities.

At Montana State, Gohn will serve as chief student personnel officer with essentially the same duties as performed by WSU dean of students James Rhatigan.

"My experiences here have been so enjoyable. Working with Dean Rhatigan, who I consider tops in the field, has been a tremendous learning experience for me and his leadership is evident in the fine student affairs here on campus," Gohn said.

"We have such a fine secretarial staff in our office — Sue Kimmel has been my secretary since I first came to WSU — I'm sure they are a major reason for our student affairs success," Gohn added.

He expressed his personal pride and

happiness about the high involvement of students with key responsibilities in student affairs and services. Because of student in-put, Bureaucracy Limited, orientation sessions and major changes in residence hall living his office has acquired a high degree of success, according to Gohn.

Gohn's duties on campus have included housing, orientation and advising fraternities and other student groups. He indicated there is a general feeling and need for additional fraternities.

"There was a slump in fraternities across the country at the end of the 50's and early 60's, but they are making a comeback," Gohn said.

"I have a big challenge before me in working at a new school and surroundings and I think its time I accept that challenge," Gohn said.

"I certainly hate to leave all of my friends and associates — this is my main regret," Gohn said.

"Bozeman is nestled in between three mountain ranges and is only 60 miles north of Yellowstone National Park, so maybe we'll be lucky and have a lot of vacationing Wichitans drop in during the summer months," Gohn said.

Gohn said he, his wife Sue (a graduate of WSU with an MM in piano performance), and 4½ year old daughter, Erika, would welcome visits from Wichita friends.

Title IX report completed

INTERCOLLEGIATE ATHLETICS and some student organizations are the only exceptions noted in Wichita State University's compliance with anti-sex-discrimination legislation, WSU's Title IX Committee report states.

The report, released July 21, exactly one year after the legislation went into effect, is the work of a committee named earlier this year by University President Clark Ahlberg to evaluate WSU's implementation of Title IX, and to recommend measures to bring the University into compliance with the law.

Title IX of the Higher Education Amendments of 1972 became effective July 21, 1975 and prohibits educational institutions from discrimination on the basis of sex.

Intercollegiate athletics is the most complicated and most controversial of the Title IX provisions, the report states, and the area of the widest differences between men's and women's programs.

THE MOST OBVIOUS differences are the allocation of locker

room facilities, practice times and the scheduling of sports events. However, the report states, a spirit of cooperation exists between the respective coaches and athletic directors of the men's and women's programs and problems relating to the use of facilities has been avoided.

The report cites locker room arrangements for women as being particularly poor yet notes that \$350,000 in planning money has been requested for a Women's Physical Education and Recreation complex on campus. Without these facilities the University will face increasing problems in the future, the report says.

Funds for men's athletic programs come primarily from gate receipts, outside boosters and student fees with only about eight per cent of total expenditures coming from the State, the report says. Women's programs, on the other hand, receive almost all their money from the State and from student fees.

THE DIFFERENCE in funds available accounts for some instances of unequal men's and

women's athletic programs, the report finds. Grants-in-aid, travel and per diem, recruitment and the tutoring of athletes are all areas where discrepancies exist but, the report notes, funds for these programs for women are now being raised from private sources.

The report said all other aspects of university life covered by Title IX are equal or comparable with the exception of six student or professional organizations.

Alpha Kappa Psi, a business fraternity, was informed earlier this month that University recognition and support for the group will be withdrawn unless the fraternity's national board of directors broadens their rules to include women before the start of the fall, 1976 semester.

The other five organizations. Sigma Alpha Iota, Mu Phi Epsilon, Phi Mu Alpha Sinfonia, Tau Beta Sigma, and Kappa Kappa Psi are all seeking exception to the legislation and a decision is expected in their cases before the start of the fall semester.

In 19 musicalian generous gleam sc Durin next m the mo drumme could m IT CE out to recording yet the r good. As good.

DOF

nan bad diff vari and disp pos BE Ear tha

POSTE



Candidate

Kay Camin, associate professor of economics at WSU is running as a candidate for Congress in the Fifth District.

Econ. Prof.

Camin campaigns for Congress

By W.E. TURNER

KAY CAMIN, associate professor of economics at Wichita State University and a candidate for Congress from Kansas' fifth district, said Monday the main focus of her campaign is on the three E's: Energy, Environment and the Economy.

"The three are actually an interlocking web of problems," Camin said. "What affects one affects the others. Energy production is crucial to the economy. Energy production affects the environment, which also affects the economy. The economy in turn affects energy production."

Camin's platform contains a strong energy policy that calls for an end to the waste of fuel, and favors continued strip mining for coal in southeast Kansas, "but in a way that will leave the land useful and productive."

The fifth district contains the only coal producing areas in Kansas and Camin believes that both effective energy policies and effective environmental legislation are essential to the well-being of the people of the district.

Camin criticized incumbent congressman, Joe Skubitz, for failing to represent the citizens of the district in these respects. "As congressman from a coal producing area, he should be fighting for higher federal standards," she said, "especially for a bill that would provide funds to undo the damage caused by many years of strip mining in the area."

Camin said she supports such legislation and points to her own efforts in reclaiming strip mined land as proof of her dedication to

the environment and the people of the fifth district. From 1969 to 1975 she was director of an Ozark Regional Commission that restored over 4,000 acres of strip mined land in Southeast Kansas for productive use.

Another plank in Camin's energy platform calls for increased research into the uses of solar energy and wind power. She said these two sources of power could become very useful to Kansas because "the sun and wind are in ready supply here."

CAMIN BELIEVES "national priority should be given to the reduction of the unemployment rate in this country." She supports public employment programs as a means of accomplishing this end, dismissing claims that this would cause a rise in inflation. "The best way to stimulate the economy," she said, "is to allow people to work and earn money."

Camin admitted that the problem with the American economy actually is twofold. "The first aspect of the problem is to expand and develop the economy to its fullest potential," she said. "The second problem is how to increase productivity without adversely affecting the quality of life in this country."

Camin believes the US needs a comprehensive program of "natural resources planning." "This would not only include mineral resources," she said, "but human resources as well."

As a teacher, Camin says she has experience in developing unused force potential in people. "I would like to see some sort of national program to help people reach their full potential."

"THERE ARE PEOPLE in this country who are not fully uti-

lized," she continued. "People who could be of vast use to the nation as a whole." The two groups least utilized, she said are women and the aged.

Camin believes her campaign for Congress has been going quite well for an effort that is not adequately financed. "I feel better about it every day," she said.

Camin admits that the shortness of funds has been a major concern for both herself and her supporters but that in some ways it is a blessing. "We have to make do with volunteers," she said, "but I've found that people who do volunteer to campaign really believe in what they're doing and work twice as hard."

When asked what affect the campaigning would have on her status at WSU, Camin replied, "I have to win the primary election first or there won't be any more campaigning." If she wins the Aug. 3 primary, however, she said she would request a two month leave of absence to campaign for the general election in November. "I think campaigning for national office would be a full time job," she said.

If she is again successful in November, Camin will request further leave of absence to fulfill her term of office in Congress.

Camin has been on the staff of WSU since 1965. She received her B.A. in government at Smith College in Massachusetts; has studied at the Institute of Social Studies in The Hague, Netherlands; has taken graduate courses at the University of New Mexico; and received her doctorate in economics, with a minor in sanitary engineering, from the University of Missouri at Columbia.

The Sunflower Employment opportunities, fall semester

Production workers—compose ads, paste-up and some lay-out of news pages. Typing helpful but not required. Will train. Flexible schedule. \$2.20 per hour.

Couriers—distribute The Sunflower each publication day. Must be available one hour between 8:30 and 10:30 a.m. Monday, Wednesday and Friday. Car or truck necessary. \$4 per issue.

Apply at The Sunflower Rm. 006, Wilner, 8:00—5:00, M—F.

Elect Judge BALLINGER Democrat District Court Paid for by Judge Ballinger Committee

"Within three days after the ad broke I sold my flute to a music professor here on campus. It does pay to use the services of The Sunflower."

Shocker Classifieds Connect!

—Phyllis Williamson

Whether you want an audience, a job, an employee, a place to live, a renter or a buyer for your property, help finding something you've lost, a ride or rider or any one of a variety of services from thesis typing to crisis counseling, you'll find it in the SHOCKER CLASSIFIEDS.

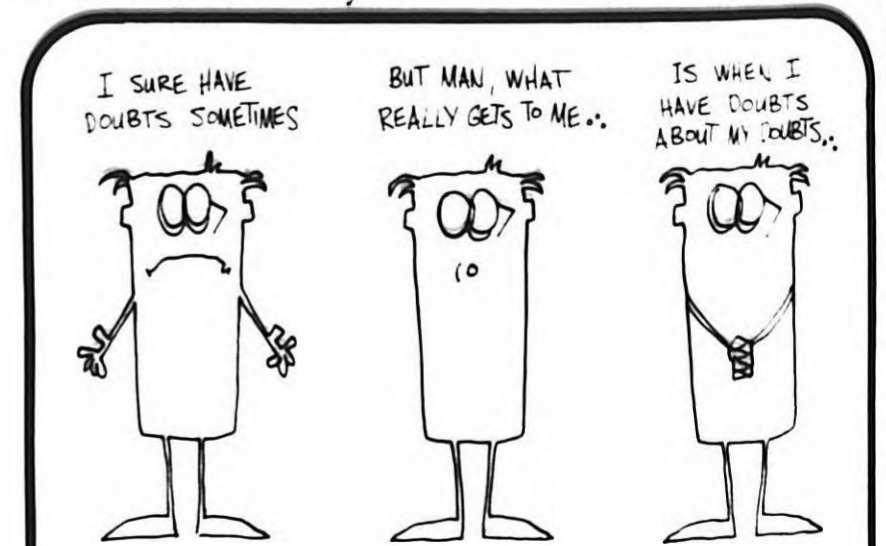
Call 689-3642 to reserve a space for your Shocker Classified. Deadline for the first fall issue (August 23) is noon August 20 Just \$2.00 for up to 25 words.

Scholarship recipient

Tona L. Veh, a sophomore at Wichita State University, has been awarded the 1976-77 Continental Airlines Foundation scholarship, according to Larry Rector, associate director of financial aids.

The Continental Airlines Foundation, with headquarters in Denver, has made a gift in support of the scholarship program at Wichita State University each year since 1967.

Miss Veh, the daughter of Mr. and Mrs. William M. Veh, 1107 Nixon Drive, Norton, also held the scholarship during the 1975-76 academic year.



UNIVERSITY UNITED METHODIST CHURCH

Phone 686 6765 2220 N. Yale Study Fellowship Groups 9:30 a.m. Celebration 10:30 a.m. Wayne D. Findley, Pastor Home Phone 687 620

CAC Board of Directors rejects petition

By DEBBIE YOUNGQUIST

PLANS FOR REMODELING the Cellar, the snackbar located in the basement of the Campus Activities Center, became a reality Friday as Mireau Construction Co. was awarded the contract for the job.

Mireau submitted a bid of \$37,435 to the CAC Board of Directors, almost double the original proposal of \$20,000.

In addition to the cost of actual construction, Bill Glenn, CAC director, explained there will be an added cost of approximately \$6,500 for 75 captain's chairs, lighting and sound equipment, bringing the total cost of the project to \$43,945.

According to Glenn, this is not the first time remodeling of the Cellar has been

proposed. However, until now no action had been taken.

The latest proposal for remodeling came from students Jan Bush and Les Walker last Spring when they discovered that many WSU students do not use the Cellar because of the present atmosphere.

According to Glenn, the remodeling will convert the west half of the Cellar into a coffeehouse which will be carpeted and equipped with a stage which will be used for live entertainment.

"**THERE WILL BE** a new menu featuring several outstanding sandwiches," Glenn added.

According to Glenn, "The east half of the Cellar will remain basically the same as it is now giving students a place to play cards or study."

The proposed remodeling had met with opposition during recent weeks from students and faculty members partly because it was believed that remodeling would do away with the study area.

After plans had been announced to renovate the Cellar, Tim Navarro, a CAC employee, circulated a petition asking the CAC Board of Directors to stop re-modeling plans. The petition read:

"We, the undersigned do not want the Cellar changed. We like the lighting because we can see how the employees make our food and drinks, we can read our books while studying, and we can see Margaret (Adams), because without her, it isn't going to be the same. We want the Cellar to stay the way it is."

According to a source who wishes to remain anonymous, Navarro was told by

CAC food service manager Erma Cook that because he was a CAC employee, he could not author a petition that defied CAC policy, and he could either give up the petition, or lose his job.

The cause was then taken up by Robert Town, assistant professor of music, who circulated the petition and gathered 170 signatures.

Most Board members believed that the number of signatures was insignificant, and not representative of the student body, because many of the petitioners were faculty members, according to Glenn.

As of now Glenn is not ready to predict what kind of reaction the finished project will receive but Glenn believes "It's certainly going to be an improvement."

Exploration '76— opportunities in higher education

Anyone who wants to attend college classes but thinks they are too old, too busy, or won't get good grades might want to attend Exploration '76 on Wednesday, August 11, 1976, sponsored by the Wichita State University Division of Continuing Education.

In its ninth year of existence, Exploration '76 is designed to provide information on opportunities in higher education and

on admission/enrollment procedures, according to Hellen Crockett, associate dean of Continuing Ed.

Divided into a morning session for women only and an evening meeting for men and working women, faculty personnel will be available to respond to many of the concerns adults have about returning to the classroom.

"It is an ideal way for people to take the first step in learning

about the process for entering college, whether it be for the first time or after an interruption of previous college enrollment," Crockett said.

Crockett said many fine students have started their college education through Exploration. "It is so gratifying to see the transition from a nervous enrollee at an Exploration meeting into a full-fledged, confident student within a few semesters."

Crockett declared.

Admission is possible into the Division of Continuing Education as a special nondegree student for a maximum cumulative total of fifteen hours if you fall in one of the following categories: (1) You are at least 25 years of age; (2) You have earned a high school or a general education diploma. No tests or transcripts are required.

Sessions will be held in Marcus Center for Continuing Education,

4201 East 21st Street, 9 a.m. to noon for women only, and again at 7 p.m. for men and working women. Special, simplified registration sessions will be held on the following day, August 12 at 9 a.m., women only, and 7 p.m., men and working women, for those wishing to enroll in fall semester classes. Additional information can be obtained by calling the Division of Continuing Education, 689-3725.

FOCUS on campus

TITLE TO FAIRMOUNT TOWERS, since 1966 a private off campus housing facility for Wichita State University students, will be transferred officially to Wichita State University and the State of Kansas at ceremonies planned for 10 a.m. tomorrow.

Representatives of the Sedgwick County Legislative delegation and Lt. Gov. Shelby Smith have been invited to attend the formal transference of the property in the Commons building of Fairmount Towers.

A LIMITED SCHOLARSHIP is available from the "Minisa Secretarial Association" for the fall semester 1976. To be eligible a student must be female, at least 25 years old, and enrolling in Business Administration courses or General Education courses applicable to a degree in business. Interested individuals may pick up an application at Financial Aids or the Division of Continuing Education.

RICHARD CURRY, senior vice president—finance for The Coleman Company, was elected president of the Wichita State University Alumni Association at the annual summer meeting of the Alumni Board of Directors.

Curry succeeds George B. Lappin, Director of the Veterans Administration, Wichita, who will remain on the board as immediate past president.

STUDENTS PLANNING to become professional journalists after graduation will meet Monday in the Journalism Office lobby at 1:00 p.m. to discuss installment plans for new members in the Wichita State University Chapter of the Society of Professional Journalists Sigma Delta Chi.

VOLUNTEERS are needed by Free U. for typing, layout, art work, catalog distribution and to man class registration booths. Ad layouts for the catalog will be paid on a piece work basis. Openings are still available for Free U. coordinators also. The jobs pay \$100 per month. Call 689-3464 or drop by Rm. 210 CAC.

JAMES MINTERN, bass trombonist, will present a student recital this evening, July 29, at 7:30 p.m. in the Concert Hall of Duerksen Fine Arts Center.

The SUNFLOWER Advertising Dept. Has Openings For

ADVERTISING SALES REPRESENTATIVES

IF YOU ARE:

- Enrolled in courses at WSU
- Aggressive yet highly personable
- Sales oriented • Interested in unlimited opportunity • A student interested in advertising, marketing, or business admin.

WE OFFER:

- Flexible schedules averaging 20 hrs/wk. • Guarantee plus draw against commissions • Mileage allotment • 20% commission on Gross sales • Various bonus plans

Apply: 006 Wilner Auditorium
Position Open Beginning Immediately thru 76-77 Academic Year



- ★ Graduate of Wichita State University and University of Kansas Law School
- ★ Experienced, practicing Attorney 16 Years.
- ★ Vote for honesty, fairness, integrity and hard work

IVAN POE
DEMOCRAT
JUDGE

District Court
Division 13
August 3

Paid for by Poe for Judge Committee, Ron Nieto, Treas.

Fi Editorials

Eulogy...

For a good friend

Somberness and disbelief spread through the Journalism Department and *Sunflower* offices last Friday with news of the death of Milton Besser, associate professor of journalism and faculty advisor to *The Sunflower*.

What can you say at the death of a friend? You can look to the memorable experiences shared with the deceased. But what's more important is what made that friend memorable.

To his colleagues, from his careers as a practicing journalist and an educator, Milt was a man of the highest ideals and professionalism. He instilled these traits in his students. He always showed concern for school and personal difficulties. He helped graduating seniors find their role, and often a job, in the world beyond commencement.

To *The Sunflower*, he was a dedicated advisor, always on-call when needed, gently guiding the student editors without impinging on the independence of the newsroom.

To all who knew him, from foreign diplomats he met while a United Nations correspondent to the journalism students of WSU, Milt's death is a loss of the greatest kind—the loss of a best friend.

— Marvin Rau

Taps...

An open letter to Wichita State University:

Prior to our departure from campus on the last day of July, we would like to take this opportunity to express our appreciation for the consideration and support provided by the administration, faculty and students of Wichita State University.

Regrettably, reduced officer quotas in the US Air Force and declining enrollments in our Air Force ROTC program have forced our closure. We thank you for your many fine contributions to our program and the privilege to have been a part of Wichita State University. We certainly have enjoyed our association with the University over the years.

It is readily apparent this is the U on the Move. Unfortunately, we will not be able to share your progress. Best wishes for your continued success.

The staff of Air Force ROTC

The Sunflower

Editor	Marvin Rau
Managing Editor	Steve Koski
News Editor	Patrick Jennings
Advertising Manager	Mary Adiehardt
Production Manager	Kim Banta
Business Coordinator	Mary Ann Myers
Circulation Manager	Peter Wong
Advisor	Milton Besser

Circulation...4,500

The editorials, columns and letters to the editor on this page reflect only the opinion and knowledge of the writers. Comments on items on this page may be sent as letters to the editor and must be typed and signed. Names will be withheld upon written request. The editor reserves the right to edit, reject or make conform to space limitations any letters or contributions. Copy should be limited to 2 triple spaced, typewritten pages.

Published at Wichita State University on Monday, Wednesday and Friday during the Spring and Fall Terms and once a week during Summer School. Second Class postage paid at WSU, Box 21, Wichita, Kansas 67208. Subscription rate \$15 per year and \$1.50 for summer session.



As you may well remember, (then again, you may not be able to remember anything. You may be very dull, or for all I know you may be the Queen of England, and if so, why are you reading this?) Ramon San-Ramon, the infamous Brazilian janitor had been commissioned by Sabreena Crow, international playgirl, junior high jacks champion and whiskey heiress, to rid Wichita of the arch-nemesis of alcohol, Rev. Richard Taylor—Lord of the Drys.

Captured soon after his arrival in the Dirt Capitol City by Taylor's guerilla band, known only as the Kansas Dry Forces, San-Ramon was spirited away to the basement of a cleverly disguised alien space-ship, known to Kansas residents as Century II. San-Ramon has discovered he is destined to engage in an All-Star wrestling match with Taylor. Having left his clean underwear at the airport, San-Ramon is incensed.

"Now wait just a minute," I said to the munchkins loosening my bonds, "I can't wrestle. My arms bend the wrong direction. Besides, I don't have any clean underwear. I left them at the airport."

"A likely story Ramon," said the one who smelled of herring.

"That's MR. Ramon to you," I snapped. Once you let the little weasels start nipping at you, next thing you know they'll be ripping out your throat.

They helped me to my feet. My feet tried to run away, but they caught them and slipped them on the ends of my legs.

"They're on the wrong legs," I protested. "The left is on the right, and vice-versa."

"It won't matter in an hour, Mr. Ramon," snarled the dried up little dwarf, "The End is near!"

"End? What end? Who started all this talk about The End?"

"You're finished, San-Ramon," the short guy growled, "The match is only minutes away."

"There must be some mistake," I said, "I'm really not Ramon San-Ramon. My real name is Bunt Macaroon. I sell insurance."

"Huh."

"Really. No kidding. Just take me into a crowd and watch everyone run away," I said desperately.

"It won't work," said another dwarf who looked suspiciously like the first.

"I can't fight. It's against my religion. I'm a hemophiliac. My nose hemorrhages at the mention of violence."

Suddenly, I was surrounded by dwarves. Well, not completely surrounded. My knees were surrounded. I was pushed forward with the flow, onto the mat.

"LAAAAAADIEEEES AAAAAAND GEN-NEMENS," the greasy announcer barked.

"THERE HAS BEEN A CHANGE IN TONIGHT'S PROGRAMMING. RAMON-SAN RAMON WILL NOT WRESTLE THE REVEREND RICHARD TAYLOR IN A TEXAS DEATH MATCH AS SCHEDULED. SAN-RAMON WILL WRESTLE..."

A hush fell over the audience. Their jaws went slack.

"HIMSELF!"

I felt myself pulled to one corner of the ring. My hands rose mysteriously above my head, and I was powerless to stop them.

"IN THIS CORNER, WEIGHING IN AT THREE-HUNDRED AND EIGHTY-SEVEN POUNDS, RAMON SAN-RAMON—THE JANITOR!!!!!!!"

"Booo! Booo!" screamed the crowd, foaming at its collective mouth.

I was drawn across the ring and slammed into the opposite corner.

"AAAAAND IN THIS CORNER," squeaked the vaseline-brained twit, "WEIGHING IN AT ONE-HUNDRED AND TWENTY-THREE POUNDS, RAMON SAN-RAMON—THE JANITOR!!!!!!!"

My hands rose above my head, once again, and clasped together.

"Yea!" howled the crowd. "Yea San-Ramon!"

I was curious as to my sudden weight loss, but I didn't have much time to ponder the situation.

"BONG," the bell rang.

I didn't waste any time. I ran from side to side, ricocheting off the ropes, jumped into the air and flung myself at me. I hit myself in the chest and knocked myself down. Leaping to my knees, I grabbed my toes and bent them over backwards. Ignoring my screams, I bent my already straining toes to their very limits. I howled and beat my fists against the mat.

"Ooh. Ouch. AAAAAARRRRGH," I cried, but it did me no good. I was merciless. This was a match to the death, and I meant to kill myself.

A figure darted from the sidelines. Quicker than a prune-tester at the end of a long day, it un-twisted me from myself. As I watched in muted horror, the black-clothed figure held me in its arms and I saw the fluid drain from my body. I floated to the floor, a dry, pink powder.

The figure turned to me and flipped back its hood to reveal the most repulsive creature I'd ever seen.

"San-Ramon, baby," it said in that seductive voice I'd heard before.

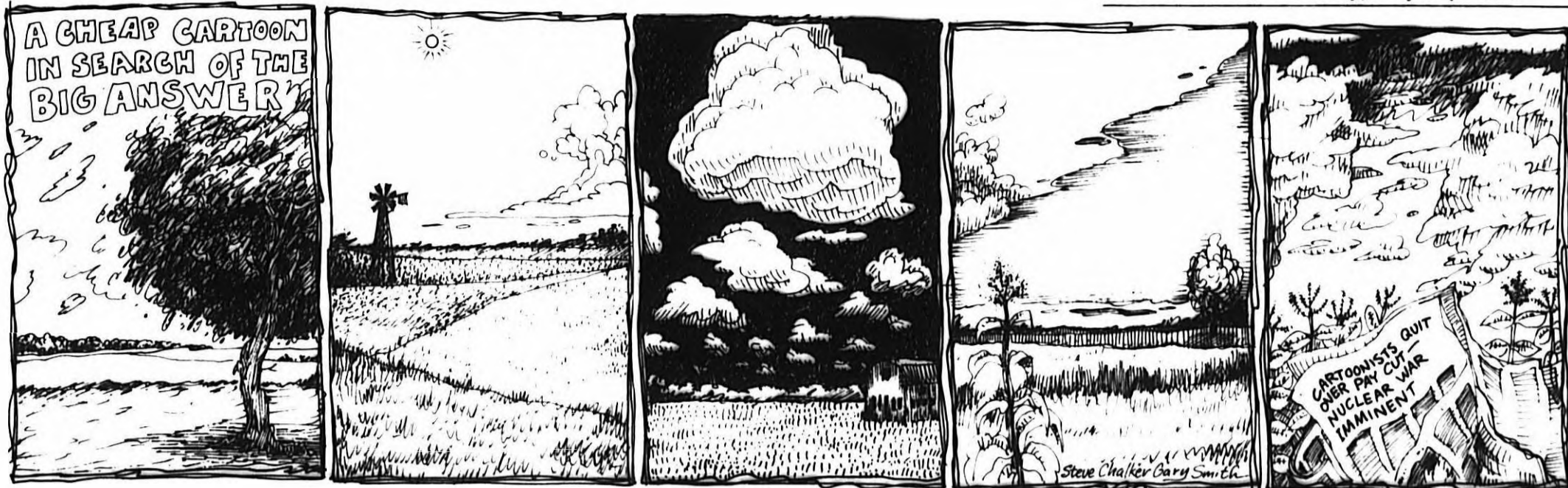
"Sabreena?"

"Some call me that—yes."

"But...but...who...how..."

"Cut the sweet-talk Ramon. Let's go to my place and talk about it over a cool one."

★ Turn to page 5



AJ Dept. offers course at Ft. Hays

Courses leading to a Bachelor's Degree in Administration of Justice will be offered on the Fort Hays State College campus for the first time this fall as a result of a cooperative program with Wichita State University

WSU's department of Administration of Justice will offer three courses on the Fort Hays Kansas State College campus during the fall semester, according to Dae H. Chang, chairman of WSU's Administration of Justice program.

Offered in a consortium arrangement with Fort Hays' Department of Sociology, the program will allow students who reside in Hays to earn a bachelor's degree in Administration of Justice to be granted by WSU.

The Department plans to extend course offerings in Liberal, Garden City and Dodge City in the near future.

The program is designed to provide a broad, multidisciplinary background for students who plan to enter career fields in such areas as law enforcement, the courts, correctional facilities and the administration of probation and parole.

The courses are also open to persons currently serving within law enforcement agencies. Those persons may be qualified to receive tuition grants from the Law Enforcement Educational Program.

A Bachelor of Science of Administration of Justice includes a minimum of 33 credit hours in the department, 18 of which must be Administration of Justice courses. The program provides course offerings in four specialized areas—agency administration, correction services, investigation and a prevention program development.

"Consideration will be given to student needs and desires as future courses are planned," Chang said.

WSU currently offers a Master of Administration of Justice degree at the Wichita campus, its Overland Park Center and at Manhattan/Fort Riley. Plans to extend this program to Fort Hays Kansas State College in cooperation with the Psychology department there in the fall of 1977 are underway.

For further information about the undergraduate program contact W. Nevell Razak, chairman of the Department of Sociology or Terry M. Nida, coordinator, Administration of Justice Program, Department of Sociology, Fort Hays Kansas State College. For information about the graduate program contact the Department of Administration of Justice, Wichita State University.

Lord of the Drys—the end

★ From page 4

Later, much later, I rolled over and pulled Sabreena to me.

"So, what you're trying to tell me then, is that Rev. Talyor is just the unwitting dupe of the same alien beings who landed that spaceship they now call Century II."

"That's right, tall, dark and dumb. They use distilled spirits just like we here on Earth use armadillos."

"You mean to maintain world peace?"

"That's right, their supply was running out because terrorists had captured all their brewmasters, so they turned to Earth to replenish their dwindling supplies of hooch."

"I'm just glad we've stopped them now, so all of Earth, even Kansas, can go on consuming what they wish, just like responsible citizens of the galaxy should be able to."

"That's right San-Ramon, without fear of other citizens of that same galaxy trying to impose their own peculiar moral-

ity on them. You-know-what-I-mean?"

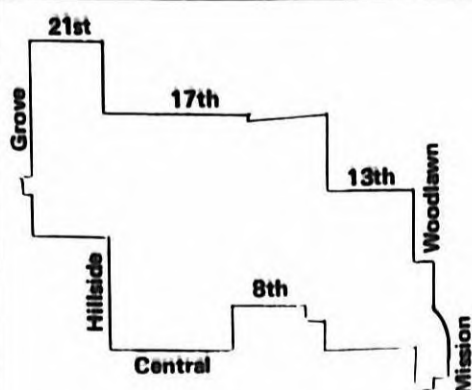
I pulled her closer to me. Her essence of muskrat perfume was overpowering.

"Enough of this philosophizing, I said huskily into her ear. "Let's get dressed and go have a drink."

"One question, San-Ramon." "Anything for you doll," I quipped.

"Don't you want to know what happened to the Rev. Richard Taylor?"

"No."



The 83rd District needs

Mike Meacham
Republican
State Representative



"As many of you may know, I am a WSU graduate (class of 74) and come from a University family. I pledge to you my wholehearted support in behalf of the University if I am elected. Toward that end, I ask for your help and offer you mine."

Mike Meacham

Paid for by Mike Meacham for State Representative Comm. C. Robert Borresen, Treas.

ROGER C. SKINNER



JUDGE

NEW DIVISION I

Paid for by Skinner Campaign Committee

July 21st thru July 31st

Peter Pan ... SUMMER VALUES!

Mr. BIG Beefburger
1 3 lb. 100% GROUND BEEF (Pre-Cooked Weight) LETTUCE, PICKLE, ONION, KETCHUP, MUSTARD OR MAYONNAISE ON A TOASTED SESAME SEED BUN
FRENCH FRIES COMBINATION
\$1.29 VALUE **99¢**

Hand Packed Ice Cream
Packed Tight & Heaped Luxuriously rich with Fruit & Nuts A GOURMET TREAT
PINT **99¢**
QUART **\$1.99**

MALTS AND SHAKES
Thick 'N CREAMY CHOICE OF FLAVORS
16 OZ. SHAKE REG. 64¢ MALT REG. 70¢ **59¢**
24 OZ. SHAKE REG. 84¢ MALT REG. 90¢ **79¢**

ICE CREAM ALL FLAVORS HALF GALLONS MANY FLAVORS TO CHOOSE FROM **89¢**

FREEZER PAK 1 HALF GALLONS **\$3.49**

POPSICLES 6 PAK **39¢**
• FUDGSICLES
• POPSICLES

A REFRESHING SUMMER COOLER
ORANGE FREEZE OR LIME FREEZE REG. 60¢ **49¢**

FOR THOSE ON RESTRICTED DIETS WE ALSO FEATURE **Diet Malt** A SUGAR FREE ICE CREAM SUBSTITUTE

Peter Pan ICE CREAM STORES
THE ICE CREAM PEOPLE
5017 E. 21st.
Many other locations in Wichita area.

In 19 musician generou gleam sc Durin next m the mol drumme could m IT CE out to recording yet the r good. As good.



Amazing

The Amazing Rhythm Aces will be at WSU tonight for two shows, 7:30 and 10:30 in the CAC Ballroom.

'Stuffed'

Aces share Amazing Rhythms

By RANDY CRUMP

The Amazing Rhythm Aces have a problem. Last year, they released a now classic single, "Third Rate Romance." It will probably be the Aces claim to fame, while at the same time an anchor to their careers. It is somehow assumed that every song the Rhythm Aces do, will just be "Third Rate Romance" all over again. Their first album "Stacked Deck" and their brand new one, "Too Stuffed to Jump", both go far beyond the ground broken by that now classic single.

"Stacked Deck" was a fine place to start, but as first albums go, it was a little inconsistent. Now a year later, "Too Stuffed

to Jump" has appeared on the scene. This could be the record that will cut the anchor chain and let the Aces flow down the river of success.

REVIEWS REVIEWS REVIEWS

"Too Stuffed to Jump" leads off with the Aces' tribute to American manhood, "Typical American Boy", a good funky little rocker about not knowing where to go in life—but sure knowing how to get "right in the night". Lead vocalist Russell

Smith puts out the feeling of knowing exactly how to get right anytime. "Fool For the Woman" has guitar licks that Lynyrd Skynyrd would be proud of. Add to that a bouncy electric piano to make a foot stomper that just won't quit. The Rhythm Aces slow down the tempo on "Dancing the Night Away", their song of Love Lost. Barry Burton's flowing guitar work adds to the bittersweet feeling of the song. "The End is Not In Sight" (the cowboy tune) is the Aces' current single. Though it will probably never be heard on Top Forty Radio in Wichita. You can feel the pain of being on the road and all alone, again Burton's guitar behind Smith's vocal works beautifully. This tune could surpass "Third Rate Romance" in popularity if given half a chance. Its melody keeps playing in the mind long after the song on the juke box has ended.

If America's record buyers/listeners wake up in time, they might not let the Amazing Rhythm Aces slip by them. If they don't, it will be like the lyrics of an Aces tune, "If you don't want me just say so, Honey, I'll be gone." That shouldn't happen, because The Amazing Rhythm Aces have a lot of good music to share. So don't pass them by in that record rack. Allow yourself the pleasure of their company and help to solve their problem.

Summer Choir concert set

The 63-member Wichita State University Summer Choir will present its annual concert at 7:30 p.m. Thursday August 5, in Miller Concert Hall in Duerksen Fine Arts Center on the WSU campus.

Under the direction of Dr. Harrison Boughton, an associate professor and coordinator of vocal music at WSU, is composed of college and community vocalists.

William David Brown's "Hallelujah!" will open the concert, which will include a selection of spirituals and a medley of tunes arranged by John Cacavas titled "Portrait of Duke Ellington" in addition to the J.S. Bach Cantata No. 106 "God's Time is the Best."

Soloists for the cantata will be WSU faculty members Janet and Vernon Yenne and George Gibson. They will be accompanied by an instrumental ensemble.

Soloists for the spirituals, "Lord, I want to be a Christian" by James Laster and "Sit Down Servant" arranged by Robert Shaw, will be Billy Waggy and John Buehler.

Accompanists for the Cacavas number will be Sherry Pilgreen, piano; Sal D'Andrea, drums, and Mark Minkler, bass.

Piano accompanists for the choir will be Caroline Golstrap and Marsha Seger.

The concert is open to the public free of charge.

Summer band ends season

The Wichita State University Summer Band will close the 1976 season with an old fashioned outdoor concert complete with homemade ice cream and cake on Tuesday, August 3, at 8 pm.

David Catron, associate professor and director of bands at WSU, will conduct the program in the Duerksen Fine Arts Center Amphitheater on the WSU campus.

The WSU Summer Band is composed of more than 80 high school, college and community musicians.

The ice cream social, sponsored by the Wichita High school South band department, will begin at 7 pm and continue through the evening. Proceeds will help purchase new uniforms for the band.

The concert is open to the public, free of charge.



Retain Paul Feleciano, Jr. for State Senator 28th District

Democrat Experienced Legislator

Paid for by the Paul Feleciano Campaign Committee

NO SERVICE CHARGE CHECKING FOR STUDENTS*

Just come in and open your account. Absolutely no limit on checks. No minimum balance necessary. *This same policy applies to any Faculty and Staff member too!

UNIVERSITY STATE BANK
17th and Hillside—Member FDIC

Fellowship awarded

Rosalind Scudder, 720 W. Broadway, Newton, has been awarded a doctoral fellowship in logopedics at Wichita State University for the 1976-77 academic year.

Mrs. Scudder, who received her masters degree in logopedics from WSU in 1972, is a member of the faculty at the Institute of Logopedics.

The Sunflower needs Models
(Both male and female models wanted) for the 1976/1977 Gift, Fashion and Wedding Supplements

Apply at The Sunflower Office Rm. 006 Wilner Auditorium 8a.m. to 5p.m.

Please submit photo with application

Call **ROTO-ROOTER** SEWER SERVICE

For Any Drainage Failure 267-4277

Fall registration schedule

PREREGISTERED STUDENTS WITH NO SCHEDULE CHANGES

Students who have preregistered and who do not wish to make a schedule change, will be admitted to Henry Levitt Arena to pay fees and finalize their registration according to the schedule below.

Monday, August 16, 1976

P.M.
1:15 Maa to McD
1:30 McE to Mis
1:45 Mit to New
2:00 Nfa to Pat
2:15 Pau to Pri
2:30 Pro to Ris

P.M.
2:45 Rit to Sce
3:00 Scf to Shz
3:15 Sia to Srz
3:30 Sta to Taz
3:45 All late comers—Maa to Tat
Doors close at 4:00 P.M.

Tuesday, August 17, 1976

A.M.
8:30 Tau to Vam
8:45 Van to Weh
9:00 Wei to Wiz
9:15 Wja to All
9:30 Alm to Bar
9:45 Bas to Bol
10:00 Bom to Buc
10:15 Bud to Cez
10:30 Cfa to Cor
10:45 Cos to Dec
Doors close at 11:00 A.M.

P.M.
1:00 Ded to Ecz
1:15 Eda to Fiz
1:30 Fja to Gep
1:45 Geq to Gz
2:00 Haa to Haz
2:15 Hba to Hoo
2:30 Hop to Jez
2:45 Jfa to Key
3:00 Kez to Lan
3:15 Lao to Lz
3:30 All late comers—A to Z
Doors close at 4:00 P.M.

PREREGISTERED STUDENTS WITH SCHEDULE CHANGES

Preregistered students who wish to make schedule changes and who did not pay fees earlier will be admitted to Henry Levitt Arena according to the schedule below.

Wednesday, August 18, 1976

A.M.
8:30 Maa to Meh
8:45 Mei to New
9:00 New to Pfz
9:15 Pga to Rie
9:30 Rlf to Scn
9:45 Sco to Spo
10:00 Sp to Tig
10:15 Tih to Wea
10:30 Web to X
10:45 Yaa to Bal
Doors close at 11:00 A.M.

P.M.
1:00 Bam to Boy
1:15 Boz to Car
1:30 Cas to Cro
1:45 Crp to Dyx
2:00 Ea to Fre
2:15 Fri to Gul
2:30 Gum to Hic
2:45 Hid to Jez
3:00 Jia to Kol
3:15 Kom to Lz
3:30 All late comers—A to Z
Doors close at 3:45 P.M.

PREREGISTERED EVENING STUDENT

Preregistered evening students will be admitted to Henry Levitt Arena to complete registration and fee payment according to the schedule below. Those students wishing to make schedule changes may do so.

Wednesday, August 18, 1976

P.M.
6:30 Maa to Pes
6:45 Pet to Sor
7:00 Sos to Wor
7:15 Wos to Cam

P.M.
7:30 Can to Fla
7:45 Fle to Hum
8:00 Hun to Lz
8:15 All late comers—A to Z
Doors close at 8:30 P.M.

DAY STUDENTS NOT PREREGISTERED

Students not preregistered will be admitted to Henry Levitt Arena by last name for enrollment and fee payment according to the following schedule.

Thursday, August 19, 1976

A.M.
8:30 Maa to Mcl
8:45 McM to Min
9:00 Mio to Mur
9:15 Mus to Obr
9:30 Obs to Pat
9:45 Pau to Poh
10:00 Pol to Ray
10:15 Raz to Rob
10:30 Roc to san
10:45 Sao to Sea
11:00 Seb to Slim
Doors close at 11:15 A.M.

P.M.
1:00 Sin to Spa
1:15 Spb to Str
1:30 Sfs to Tho
1:45 Thp to Val
2:00 Vam to War
2:15 Was to Whll
2:30 Whj to Wit
2:45 Wlu to Zz
3:00 Aab to Arb
3:15 Arc to Bar
3:30 Bas to Bln
3:45 All late comers—Ma to Bln
Doors close at 4:00 P.M.

Friday, August 20, 1976

A.M.
8:30 Blo to Bra
8:45 Bre to Bul
9:00 Bum to Car
9:15 Cas to Clo
9:30 Clp to Cox
9:45 Coy to Dav
10:00 Daw to Dos
10:15 Dot to Elw
10:30 Elx to Fis
10:45 Fit to Ful
11:00 Fum to Gll
Doors close at 11:15 A.M.

P.M.
1:00 Glo to Gue
1:15 Guf to Har
1:30 Has to Hen
1:45 Hho to Hol
2:00 Hom to Itr
2:15 Its to Jon
2:30 Joo to Kid
2:45 Kie to Kru
3:00 Krv to Lem
3:15 Len to Lz
3:30 All late comers—A to Z
Doors close at 3:45 P.M.

EVENING STUDENTS NOT PREREGISTERED

Registration and fee payment for evening students not pre-registered will take place in Henry Levitt Arena according to the alphabetic schedule below.

Thursday, August 19, 1976

P.M.
6:30 Ma to Mz
6:45 Na to Pz
7:00 Qa to San
7:15 Sao to Sp

P.M.
7:30 Sq to Vz
7:45 Wa to Z
8:00 A to Bln
8:15 All late comers—Ma to Bln
Doors close at 8:30 P.M.

Friday, August 20, 1976

P.M.
6:30 Blo to Car
6:45 Cas to Dav
7:00 Daw to Fis
7:15 Fit to Gue

P.M.
7:30 Guf to Hol
7:45 Hom to Kid
8:00 Kie to Lz
8:15 All late comers—A to Z
Doors close at 8:30 P.M.



Wedding Invitations

Wedding Gifts Thank You Wedding Albums Wedding Napkins Blue Garters	Cake Tops Brides Bibles Cake Knives Toast Glasses Ring Pillows
---	--


CHINA • CRYSTAL • SILVER
"BRIDAL REGISTRY"

YALE'S EAST
2820 E. DOUGLAS
684-7225



SENECA SQUARE
3127 S. Seneca
524-3219

JACK
VOTE



WILLIAMS

FOR

CONGRESS

DEMOCRAT
4th DIST.

Paid for by the JACK WILLIAMS for CONGRESS Committee

CAC Activities Presents

The Asphalt Jungle

Starring Sterling Hayden, Jean Hagen, Sam Jaffe,
Marilyn Monroe

Directed by John Houston

Showing July 30th 7 & 10 pm 75c CAC Theatre

RETAIN EXPERIENCE*

*The administration of justice is serious business - not to be used lightly.

Keep

The Consumer Protection—
Economic Crime Office

Keep

"Human Rights" Preserved

Keep

A Competent, Trained
and Experienced DA Staff

Keep

Honesty and Integrity
Above Reproach


Keep

Court Room and
Administrative Experience

Keep

Cases Tried in Courts—
only in the Courts

DEMOCRATS AND INDEPENDENTS



Re-elect SANBORN

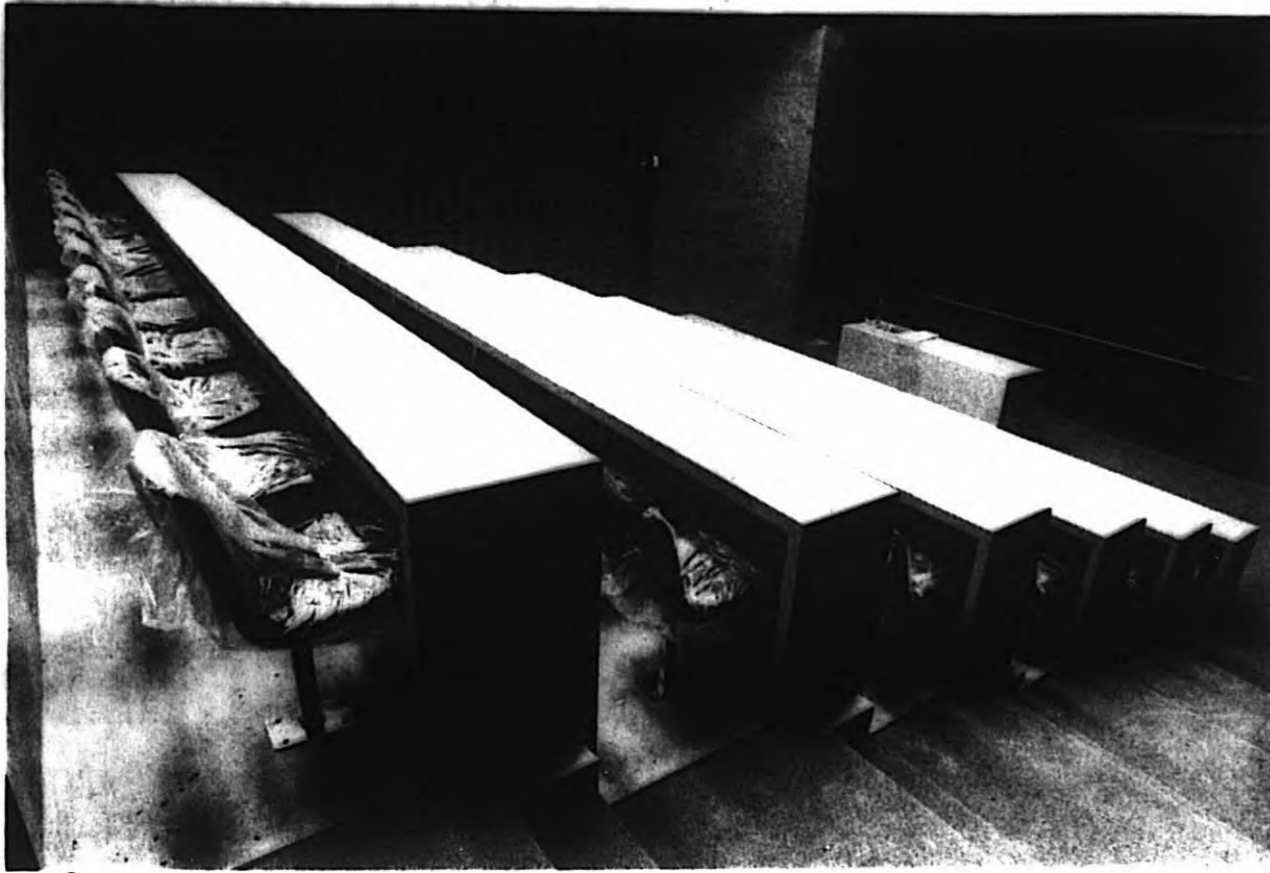
DEMOCRAT

A TRIAL TESTED PROSECUTOR
DISTRICT ATTORNEY

Paid for by Sanborn for District Attorney Committee. Jack Glaves, Treasurer

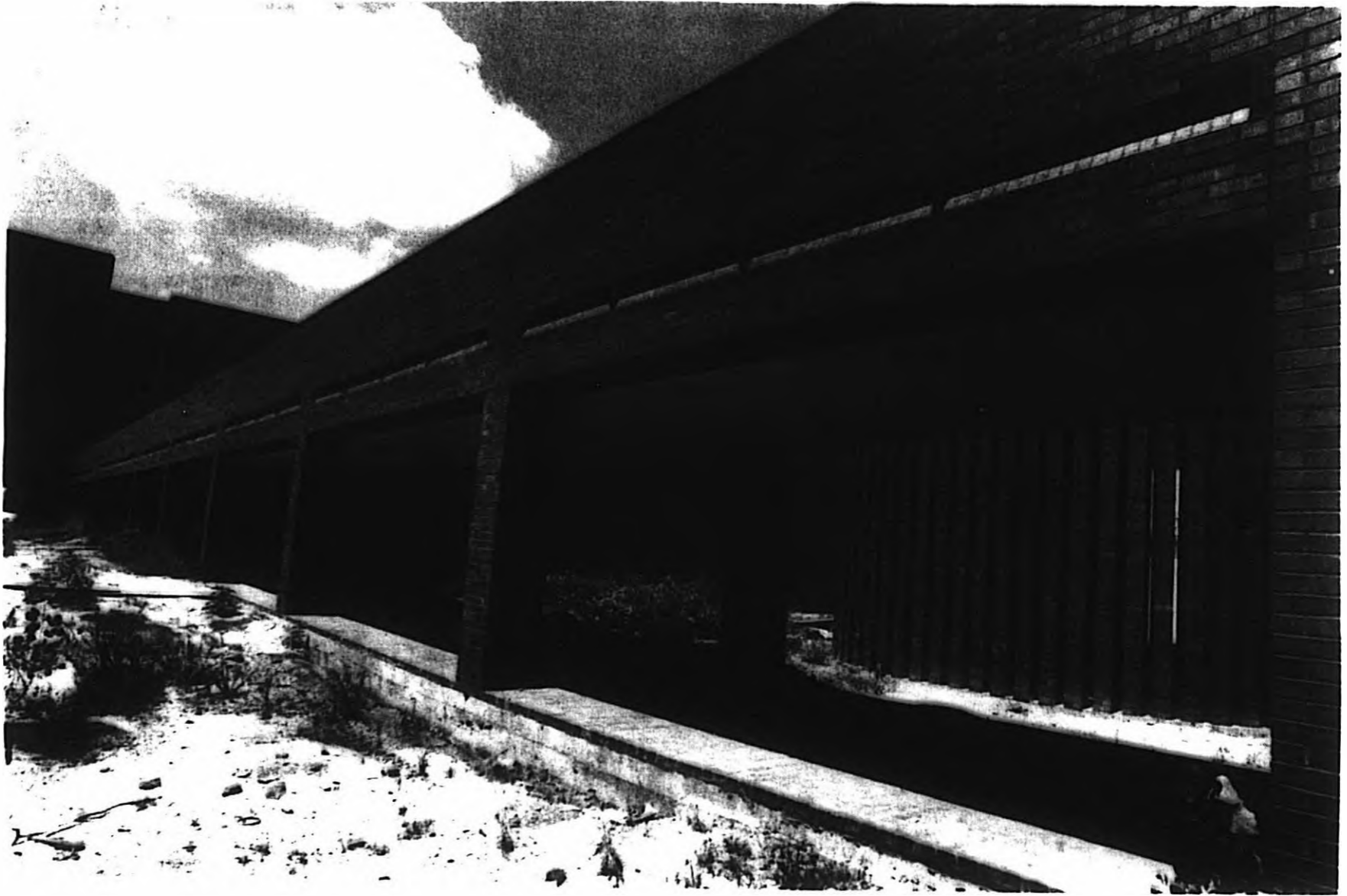
Fi

In 19
musician
generous
gleam sc
Durin
next m
the mou
drumme
could m
IT CE
out to
recording
yet the r
good. As
good.



The new Engineering Building as seen through a 20 mm lens.

DOE
nan
bad
diff
vari
and
dis
pos
BE
Ear
tha
POSTE



Photographs by
Marvin Rau
Editor.



WEEKEND U.—toward personal enrichment

By JOYCE SMITH

WEEKEND UNIVERSITY will be launched on Aug 28, as Wichita State University joins about 40 other institutions across the country that have extended the school week, according to Helen Crockett, associate dean of the Division of Continuing Education.

Sponsored by Continuing Education, Weekend University will offer 24 courses, (four for graduate credit) from all of WSU's degree granting colleges with the exception of Health Related Professions.

Crockett said courses have been selected to help the beginning student who is interested in starting an associate degree or helping in personal enrichment in his work.

"We are happy to have such a broad institutional base," Crockett said, "and since weekend classes were included in the fall schedule of courses, approximately 150 students already have enrolled. It indicates to us that we have overcome the aversion to an extended school week."

WEEKEND UNIVERSITY is the product of a planning committee composed of one associate dean from each under graduate degree granting college, the associate dean of the Graduate School and the associate dean of Continuing Education, who chairs the committee and will serve as coordinator of the pilot program.

Crockett indicated that approximately 50 other schools are investigating this type of program.

Crockett said classes will vary in scheduling. Some will meet every Saturday morning or afternoon, others will meet all day Saturday on alternate weekends.

"It has been through our non-credit conferences and workshops that we have realized how appreciative students are for the chance to attend meetings on Saturdays," Crockett said.

"STUDENTS HAVE said that starting out fresh in a class on Saturday morning has much more appeal than having to go to class at night after working all day," Crockett added.

Crockett said Continuing Education had been afraid to extend the school week, but with the early registrations, it appeared that the time was right for the extension.

"Weekend will appeal to a wide range of interests. I am especially glad for those who live a good distance away from the University and have been unable to attend classes up until now. They will have a chance to begin a college education or complete a degree program that had to be interrupted for some reason," Crockett said.

Orientation for Weekend University will begin at 8 a.m., Saturday, Aug 28, in the Campus Activities Center Ballroom, at which time enrollment in classes will take place. The first class session will follow at 10 a.m.

Students who are not admitted to the University may enroll in classes provisionally. Admission Office personnel will be present during registration for Weekend classes.

Crockett stressed that only Weekend students will be enrolled on that day. Students wanting to enroll in regularly scheduled classes must enroll at other registration time, which appear on page seven.

Additional information about Weekend may be obtained by calling the Division of Continuing Education, 689 - 3725.

Elect
Judge
BALLINGER
Democrat
District
Court
Paid for by Judge
Ballinger Committee

Logopedics awards scholarship

Dr. Burl B. Gray, an authority in programmed learning for communicatively handicapped children, is the 1976 Martin F. Palmer Distinguished Scholar-in-Residence in the Wichita State University Department of Logopedics.

Funds for the summer residency were provided several years ago by the Institute of Logopedics to honor the late Dr. Palmer, founder of the Institute, and to bring a series of outstanding scholars to the WSU campus.

Each scholar in residence spends a two-month period in Wichita, teaching one Summer Session course at WSU and working with the staff at the Institute.

The first Palmer Scholar, Dr. Doris Bradley, was appointed for the summer of 1974. Dr. Bradley joined the staff of the Institute that fall, and she now is director of clinical services. The residency was not filled in the summer of 1975.

This summer, according to Dr. J Keith Graham, chairperson of the Dept. of Logopedics, students have the rare opportunity to study with a speech pathologist known throughout the world for his work in programmed learning strategies.

As the 1976 Palmer Scholar-in-Residence, Dr. Gray works

with Institute staff during the morning, teaches a senior/graduate level course in clinical programming and has discussion sessions with logopedics students during the afternoon.

The visiting scholar is senior staff scientist for the Human Resources Research Organization at Carmel, Calif. He is the co-developer of numerous programmed learning strategies for communicatively handicapped children, including the widely adopted Monterey Language Training Program.

Dr. Gray also is working with special education instruction programs in reading, arithmetic, sports and other learning skills.

"My main emphasis," he said, "has been on educational research, methods of instruction—what are the best ways to teach people and what are the best ways to design materials so people can learn well."

Dr. Gray holds a PhD in speech pathology from Southern Illinois University, and has special training in psychology, experimental design and psycholinguistics from the University of Illinois.


He has previously done research in behavior therapy and stuttering and in language acquisition for dyspasic children.

His Monterey Language Program was first published in 1971 has been widely adopted. It was adopted in 1975 at the Institute of Logopedics for use in a group language program for preschoolers.

He has since published Monterey Learning Programs in reading and arithmetic.

The Palmer Scholar-in-Residence for 1977 will be Dr. Daniel Boone, currently president of the American Speech and Hearing Association and an authority in voice disorders and clinical methods.

The Disco of Disco's



CENTRAL & WOODLAWN

- \$50,000 of Light & Sound
- Two Disco Jocks
- Fog Machines
- Video Instant Replays on a 30"X40" Screen to See Your Disco Dancing
- Movies less than 1-year old shown at 6 & 8 pm. We can't advertise titles here Check It Out, Free
- \$500 Dance Contest Soon

Open 6p.m.-3a.m. Tues-Sat 683-5651

Re-elect
George PIERCE
County Clerk
Democrat

Past member of the
Medical School Advisory
Board of WSU

He will continue to save
the taxpayer's money!

Paid for
by Friends of George Pierce

MANN THEATRES

OUR FINAL WARNING.

THE OMEN

GREGORY PECK
LEE REMICK

FOX 135 N. WATER 262-5197

They soared from the skies to stage the most daring rescue ever filmed!

SkyRiders

JAMES COBURN · SUSANNAH YORK
CHARLES AZNAVOUR · ROBERT CULP

ORPHEUM 700 NORTH BROADWAY 262-1224

NOW SHOWING!

HARRY WALTER GO TO NEW YORK

JAMES CAAN · ELLIOTT GOULD
MICHAEL CAINE · DIANE KEATON

BOULEVARD 600 GEORGE WASHINGTON 682-6771

What the song didn't tell you the movie will.

Ode To Billy Joe

From Warner Bros

MALL CINEMA 1999 E HARRY 685-5386

Wichita State University Libraries, Special Collections and University Archives

Fi

In 19
musician
generous
gleam so
Durin
next mu
the mot
drumme
could m

IT CE
out to
recording
yet the r
good. As
good.



Neil Cook—The Sunflower



Neil Cook—The Sunflower

Finale...

Once Upon a Mattress, the closing show of the 1976 season for the WSU Summer Theatre, is a cheerful romp through Fairy Tale Land, and the inside story on what really happened to the princess who slept on the pea.

Elect
Judge
BALLINGER
Democrat
District
Court

Paid for by Judge
Ballinger Committee

2 Shows
Tonight
7:30 & 10:30


the Amazing Rythm Aces

with special guest

ELMO the Tap Dancing Evangelist

CAC Ballroom Wichita State University
Tickets Available at: Argus Budget CAC

\$4 Advance **Beer on Tap** **\$5** At the Door
Proof of Age Required



ELECT
BILL N. BUGOVICS
(DEMOCRAT)
YOUR COUNTY TREASURER
FOR EFFICIENCY, COURTESY
NO EMPTY PROMISES
Best Service For Your Tax Money

SINCERITY
HONESTY
INTEGRITY

Paid by Bill N. Bugovics



Bruce McCracken

YOU
Should Know
Your
County
Treasurer
BETTER
VOTE... VOTE



BRUCE McCRACKEN HAS:

- Tripled county investments by an improved mail computation to best utilize your tax dollar.
- Provided full service sub-stations to save you time in buying your license tags and title work.
- Inaugurated a system of paying your taxes at drive-in windows, for your convenience.
- Up-dated procedures to add efficiency, cut operating costs and save your tax dollars.
- Developed a night-day tax-depository box system for you.
- Made this progress in only nine months.

BRUCE McCRACKEN WILL:

- Continue to up-date the system for the taxpayer's benefit and convenience.
- Continue to employ experienced and capable personnel without political motivation.
- Continue to protect your treasurer's office from pressure groups, either political or self-serving.
- Continue to give you concerned service in keeping with his pledges to you.
- Continue to cooperate with all governing bodies.

WHEN YOU VOTE...

- Vote "for the man" or vote your ticket "straight" and believe in honesty and integrity in public office.
 - Vote for a proven business administration plus continued progress.
 - Vote for a man who keeps his pledges without fear or favor.
 - Vote for a man who believes the office belongs to the people, thus works solely for the people.
 - Vote for a man who presents a new image for elective officials.
- Then you'll help re-elect Bruce McCracken your county treasurer, a Democrat.
- Your vote, and that of your friends, is important and respected.

VOTE... VOTE VOTE... VOTE

Re-Elect McCracken

Paid for by McCracken for
County Treasurer Committee
Richard A. Kline, Chairman

Democrat for County Treasurer
You Can Count On Him Again

Basic grants main focus of National Student Lobby

Washington, DC—The National Student Lobby recently announced its priorities for the upcoming conference committee on the 1976 Higher Education Amendments. The NSL priorities were released with the Lobby's comparative analysis of the difference between the House and Senate bills as they affect students. The analysis provides commentary and position statements on more than forty issues. The

document will serve as a discussion paper and "asking list" for the Lobby in working with the conferees and their staffs, and with the Washington-based higher education associations.

Heading the list of priorities is NSL's full support of the Senate provision in S2657 raising the maximum allowable Basic Grant award to \$1,800. The Lobby statement notes the imperative need for the increase, citing

increases in college costs over the last six years as much as 96 percent with continuing annual increases ranging between 7-9 percent. According to the statement, the \$1,800 maximum Basic Grant, a \$400 increase over the current \$1,400 ceiling on Basic Grant awards, will help compensate for increased costs over the last four years. However, it will be inadequate to cover anticipated increases in college

costs for the coming year.

The NSL statement also calls for a shorter reauthorization period for Basic Grants of two years; (the House bill calls for a one year extension, the Senate for a six year extension). NSL cites the need to review again the importance of including an inflation index in the Basic Grant program and eliminating the

provision limiting a student's maximum award to half the cost of his or her education.

"Compromise on this issue would represent a real loss for students," according to NSL Executive Director Dan Schottenfels. "Students are finding it increasingly difficult to pay for their education."

University Record

From the office of the Director of Communications/Elizabeth P. Clark, Editor (Box 2)

FACULTY MEETING DATES ANNOUNCED

A welcoming and orientation session for new faculty will take place Tuesday, Aug. 17, beginning with a coffee at 9:15 a.m. in the Life Sciences Foyer. John Breazeale, vice president for academic affairs, will give the official welcome and preside at the meeting in 209 Life Sciences. Speakers will include James J. Rhatigan, vice president for student affairs; Orpha Duell, president of the University Senate; Lloyd Benningfield, dean of graduate studies and research; and D. Cramer Reed, vice president for health education. A luncheon in the CAC Commons will follow the program.

The first general faculty meeting of the fall will take place Monday, Aug. 16, at 9:30 a.m. in 208 Life Sciences.

INTERSESSION SCHEDULE

ABLAH LIBRARY

Saturday, Aug. 7, 9 a.m. to 1 p.m.
 Sunday, Aug 8, closed
 Monday to Friday, Aug. 9-13, 8 a.m. to 5 p.m.
 Saturday, Aug 14, 8 a.m. to 1 p.m.
 Sunday, Aug. 15, closed
 Monday to Friday, Aug. 16-20, 8 a.m. to 5 p.m.
 Saturday, Aug. 21, 8 a.m. to 1 p.m.
 Sunday, Aug. 22, closed
 Monday, Aug. 23, resume regular schedule.

CAMPUS ACTIVITIES CENTER

The CAC Building will be closed on Saturday and Sunday until the first day of classes, Aug. 23. CAC Building hours Monday through Friday are from 7 a.m. to 6 p.m. The Corral Cafeteria will be open weekdays from 7 a.m. to 4 p.m. Bookstore hours will be from 8 a.m., to 4:30 p.m. The Recreation area will be open 8 a.m. to 4:30 p.m. Hardees will be open from 10 a.m. to 4 p.m. The Cellar and the Commons will be closed during the intersession.

ALUMNI OFFICERS

Richard Curry, senior vice president-finance for the Coleman Company, was elected president of the WSU Alumni

Association at the annual meeting of the board of directors.

He succeeds George B. Lappin. Elbie McNeil was elected vice president; Jack Kratzer, secretary; and Mrs. Myron Hultgren, treasurer.

New members of the board elected to three-year terms are Don. E. Anderson, Michael L. Cochran, Daniel E. Foley, Jane Gilchrist, Mrs. Albert Kamas, Cleo Littleton, and John R. Morton, all of Wichita, and Robert F. Dewey, Oklahoma City.

LABOR DAY HOLIDAY

Governor Robert F. Bennett has announced that Labor Day, Monday, Sept. 6, has been designated a holiday for all state employees. Classes will not meet, and President Clark D. Ahlberg has authorized all University offices to be closed. Classified personnel whose services are required on that day will be compensated in accordance with the University overtime compensatory time policy.

ID FOR SWIMMERS

Faculty and staff using the Shocker Swimming Pool are requested to bring their IDs when they enter the pool area. Both faculty and staff and their spouses may swim for \$1.05. Verification of identification is required to determine eligibility for the use of the pool.

PERSONNEL OPENINGS

The office of Personnel Services lists the following vacancies: patrolman in Security; clerk-typist II halftime in political science; clerk-typist II in

Financial Aids and Nursing; clerk-steno II in Economics, Medical Technology, and Art; Clerk III in English; secretary I in Planning and Career Planning and Placement; data entry equipment operator I in the Computing Center and the Business Office; cashier in the Business Office; and stationary fireman and laborer II in the Physical Plant.

Information about these openings and promotional opportunities may be obtained at the Office of Personnel Services, 122 Jardine.

INTERCOLLEGIATE ATHLETICS and some student organizations are the only exceptions noted in Wichita State University's (UNIVERSITY RECORD)

PROFESSIONAL OPENINGS

Candidates are being sought for the following positions: Dean for student life and services responsible for supervision of general Student Affairs Office including residence halls, placement, financial aids, etc. Urban university experience and doctorate are preferred. Application and resume should be sent to James J. Rhatigan, vice president for Student Affairs by Aug. 10. Director of career planning, a new position, responsible for program of life and career planning and cooperative education. Experience and doctorate are preferred. Applications and resumes should be sent to David McFarland, assistant vice president for student affairs, by Sept. 1. Registered nurse, half time in the WSU Branch UKSM. Requirements are for a diabetes nurse specialist (or diabetes nurse educator) and a support clinic nurse. Applications should be sent to WSU Branch UKSM, 2221 North Hillside.

University Community...

A program that develops problems which slow down the decision making process to permit questioning and analysis at each step has been awarded a grant of \$5,900 by the Exxon Educational Foundation IMPACT program. **ARLENE FRAIKOR**, director of integral health education for the WSU Branch UKSM and the College of Health Related Professions, is the director of the project which is being developed for medical students and health care students.

A grant of \$92,961 has been approved by HEW's Administration of Aging for continued funding for a multidisciplinary and multidisciplinary and training program in gerontology. **WILLIAM C. HAYS**, director of the

ROSALIND SCUDDER, instructor in logopedics, has been awarded a doctoral fellowship in logopedics for the 1976-77 academic year. She has received notice that she is included in the first edition of *Who's Who - Child Development Professionals*.

WSU SUMMER THEATRE

presents

Once Upon A Mattress

A cheerful, musical romp through Fairy Tale Land

July 29 through July 31

Curtain Time 8 p.m.
 Wilner Auditorium

General Public \$2.50
 WSU Students & Faculty \$2.00
 High School Students \$2.00



FOR A GOOD TIME CALL 689-3368

Re-elect

TOM SCOTT



Democrat For

COUNTY COMMISSIONER
2nd District

MY RECORD IS . . .

Courtesy and Efficiency

6 Th
Fi

In 19
musician
generous
gleam so
Durin
next m
the mo
drumme
could m
IT CE
out to
recording
yet the r
good. As
good.



Mick McGee—The Sunflower



Juggling

Although the sports action at WSU is a little slow this time of year, things have been cooking at Lawrence Stadium with the National Baseball Congress state tournament. The unidentified player above couldn't seem to juggle his team into a winning position: they lost 17 - 5.

Job Corner

Information on these and other job opportunities are available at the Career Planning and Placement Center, 004 Morrison Hall. Refer to the job number when you inquire.

STUDENT EMPLOYMENT OPPORTUNITIES

Job No. 798--Night Clerk. Must have previous clerical experience. Collection work experience would be helpful. M-F, 5pm-9pm. Some Saturdays. 9-6. \$2.65/hr.

Job No. 800--Clerk typist. Typing 50-55 WPM. W. Th. Fri., 1-5, Sat. 8-4. 20 hours a week. \$3.50 hour.

Job No. 807--Cashiers, (4 openings). Previous cash register experience is desirable. 15-20 hours a week arranged. \$2.30/hour.

Job No. 816--Library aide. Library experience an asset but not necessary. Typing, filing, and spelling test required. M-F, 5-9pm Sat. 7am-12noon. 25 hours a week.

CAREER EMPLOYMENT OPPORTUNITIES

Job No. 626--Assistant Director Trainee. Individual selected will be responsible initially for the recruiting and management of volunteers. Position has potential for advancement into an assistant director position in time. College degree with all majors considered. Previous public relations or other related work experience would be helpful, but is not required. A company representative will be on campus Wednesday, August 4, 1976 to interview for this position. Salary: Approximately \$600 per month to start.

Job No. 629--Sales Representative: Will be calling on industrial accounts for the sale of company products. College degree preferred with all majors considered. Applicants must have some mechanical aptitude, and some engineering background would be helpful but is not required. Salary is negotiable.

Job No. 633--Marketing Representative: Individual selected will be responsible for the marketing of company products. College degree with all majors considered, previous work experience, and sales ability. Salary is dependent upon qualifications and experience.

Job No. 651--Field Representative: Will be responsible for overseeing and executing the program of work within a several county region in Western Kansas. Position also will involve fund raising activities with considerable travel. College degree with all majors considered is preferred but not required. Previous public health or public relations work experience is desirable. Applicants must have own transportation, be willing to travel, and able to work with volunteers. \$8700 annual base salary plus traveling expenses and mileage compensation.

DO
nan
bad
diff
vari
and
dis
pos
BE
Ear
tha
POSTE

SHOCKER CLASSIFIED

CLASSIFIED ADVERTISING
RATES: \$1.75/1-25 words (.50 ea. additional 10 words)
All caps, bold face or italics included

CLASSIFIED DISPLAY
\$2.25/col. inch (1 inch minimum)
Border, variations in type styles and clip art included

DEADLINES: Noon Tuesday
No responsibility assumed for more than one incorrect insertion.
Rm. 001, Wilner Auditorium (Box 0) - (316) 689-3642

For Sale

ROCK T-SHIRTS: Over 100 different popular designs at very good prices. Send for free details. Cosmic Rainbow/167 West 21st Street/ New York/ NY/ 10011.

Two '73 Yamaha Mx's 80 & 100. Low mileage. \$200 & \$225. 263-1943.

BABY ITEMS--baby bed, play pen, car seat, car bed, adjustable gate; also man's bike. 682-0772 after 5:30 p.m.

Services

TYPING--Experienced in theses, dissertations, manuscripts, term papers, etc. IBM Selectric, carbon ribbon, pica type. Call Leslie 681-0591.

Fast, accurate, professional typing of papers, articles, theses, & manuscripts. **Special Student Rates.** Andrea M. Ramsay, Professional Business Service. 683-7831

CONCERNED ABOUT ENVIRONMENT, energy, the economy? Celebrate the bicentennial by getting involved in the political process. Kay Camlin for Congress Campaign needs volunteers. Call 683-1935.

Students your WSU registration card good for 15% off, when presented with your dry cleaning, at Prairie Village, Cowboy Cleaners, 13th and Woodlawn.

PREGNANT? CALL BIRTHRIGHT. Free pregnancy test. Confidential. 685-1379, 214 N. Hillside.

IMPORTANT STUDY ABROAD ANNOUNCEMENT: Limited openings still remain on CFS accredited Academic Year 1976-77 Programs for Fall, Winter, Spring, or Full Year for qualified applicants. Students in good standing--Freshman, Sophomore, Junior, Senior year are eligible. Good faculty references, evidence of self motivation and sincere interest in study abroad and international cultural exchange count more with CFS than specific grade point. For applications/information: CENTER FOR FOREIGN STUDY/AY ADMISSIONS/216 S. State/ Box 606/ Ann Arbor, MI 48107. (313) 662-5575.

FAST--REASONABLE: Typing, new IBM, accent marks engineering symbols. Dissertations, theses, papers. Editing as needed Graduate language exams. References. Call 683-0942 TODAY.

Employment

TEACHERS WANTED: West and other states. Placements since 1946. Bonded. Southwest Teachers Agency, Box 4337, Albuquerque, NM 87106.

WORK--STUDY OPENING: Sunflower needs office assistant 15-20 hours per week. Light typing, filing, misc. duties. \$2.20/hr. Apply Room 006, Wilner. EQUAL OPPORTUNITY EMPLOYER M/F.

Housing

TWO FEMALES NEED A THIRD ROOMMATE to share three bedroom-two bathroom basement apartment 1/2 block from campus. \$75 plus bills. Contact at 913-827-7640

Want to Buy

POVERTY RECORDS
We Buy and Sell USED Albums
jazz-rock-blues-classical-curiosities
many out-of-print albums available
2719 East Central 681 - 3341

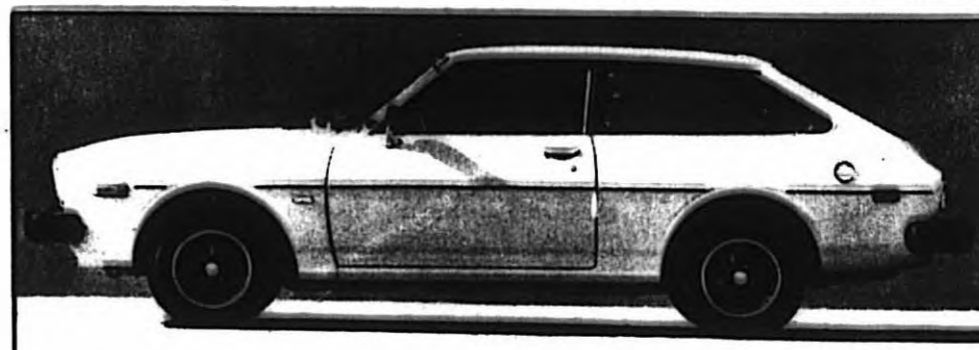
REWARD \$25⁰⁰

for information leading to the return of the 1974/75 bound volume of The Sunflower taken from the Sunflower offices.

Also, 10¢ per copy will be paid for each copy up to six of the following issues: 11/10/75, 11/12/75 and 2/11/76.

Call 689-3642.

THE LARGEST SELLING CAR IN THE WORLD



See & drive it at **EDDY'S TOYOTA.**
6637 E. Kellogg
Mike Hays or Ed Minges

SPECIAL

Trampolines by Mastercraft
Summer Close Out 4 Popular Sizes
America's Favorite Family Sport

Thomas Z. Garland

TZ Enterprises 683-5940