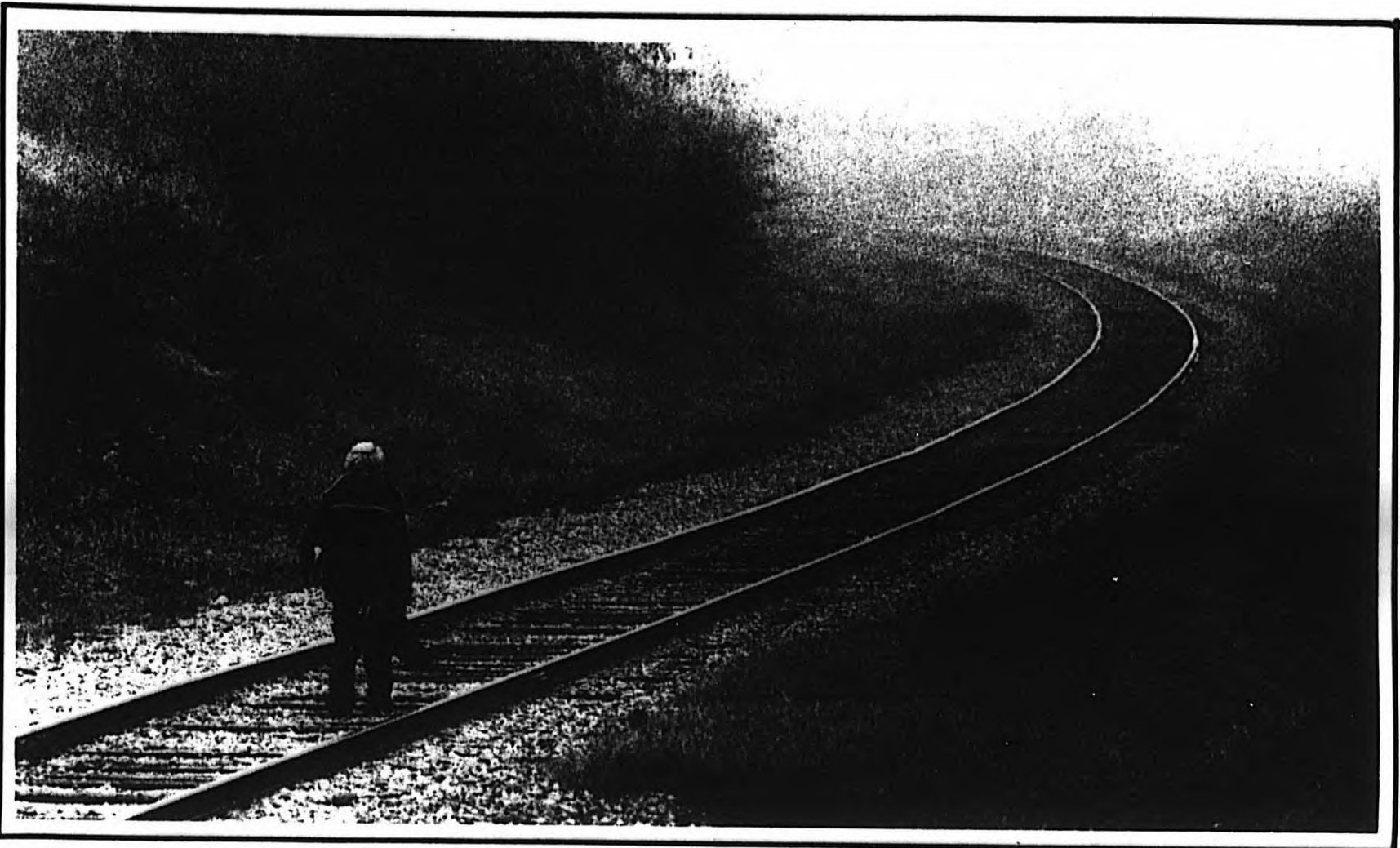


Misty morning

Vincent Boston, a fifth-grader at Cotter Elementary School, following the tracks on his way to school on a foggy Thursday morning.

Alan Dorow—The Sunflower



Friday

November 4, 1977
LXXXII No. 36
Wichita State
University

The Sunflower

WISE computers help shorten research time

By JUDY MOULOS
Staff Writer

For those who can afford the service, WISE can tell a researcher almost everything he or she needs to know about anything.

The Wichita Information Service (WISE) is a new, computerized on-line bibliographic search service offered by the Wichita Public Library and has just gone into operation this week, according to Deb Hamilton, director of community special services of the Wichita Public Library.

The computerized research service has become part of the Business and Technical Section of the library and is connected by telephone terminals with three major computer research services, Hamilton said.

Terminals are connected to the New York Times Information Bank, Orbit, a service offered by Systems Development Corporation, and Lockheed's Dialog.

Through the three information banks, Hamilton said, trained personnel have access to 20 million citations covering almost every conceivable subject area.

Her department has not yet had a call for the service, but Hamilton said she expects it will take two years before the operation really gets rolling.

Based on national usage of the computer, service costs from \$15 to \$30 and requires about 10 minutes at the terminal. The greatest expense is the telephone time involved, Hamilton said. Before anyone uses the computer, they are interviewed at no charge to ascertain whether the computerized service will provide them with the information they need.

Hamilton said four staff people

went through a week of thorough training to familiarize themselves with the new system.

"It was somewhat difficult because each uses a separate language," she said. "Only people who are trained can get in data bases. It would be entirely too expensive for someone untrained to attempt to use this on their own."

Hamilton said the staff got about 200 free hours of research time to play with the equipment.

"We love it," Hamilton said. "It is the front line in sophisticated research equipment. There is no better way to get research done. It's dynamite because there is no other, quicker way to cover as enormous a volume of information as we can cover with this."

The subject areas in which the department can research information are: business and marketing, finance and technology, patents and statistics, Congressional information and social and behavioral sciences. The only areas that library personnel have found not to be covered are genealogy and religion, according to Hamilton.

Initial funding for this new library service was provided by the Kansas State Library and Friends of the Wichita Public Library.

Hamilton said depending on which data base information is obtained from, a person using the service can expect to receive a complete list of titles and authors and sources from which to extract the information desired. She said the New York Times also provides an abstract of the information.

"The abstracts are very informative," she said. "Each article is boiled down into a couple of sentences telling what was done and what was accomplished."

*turn to page 5

Inside today

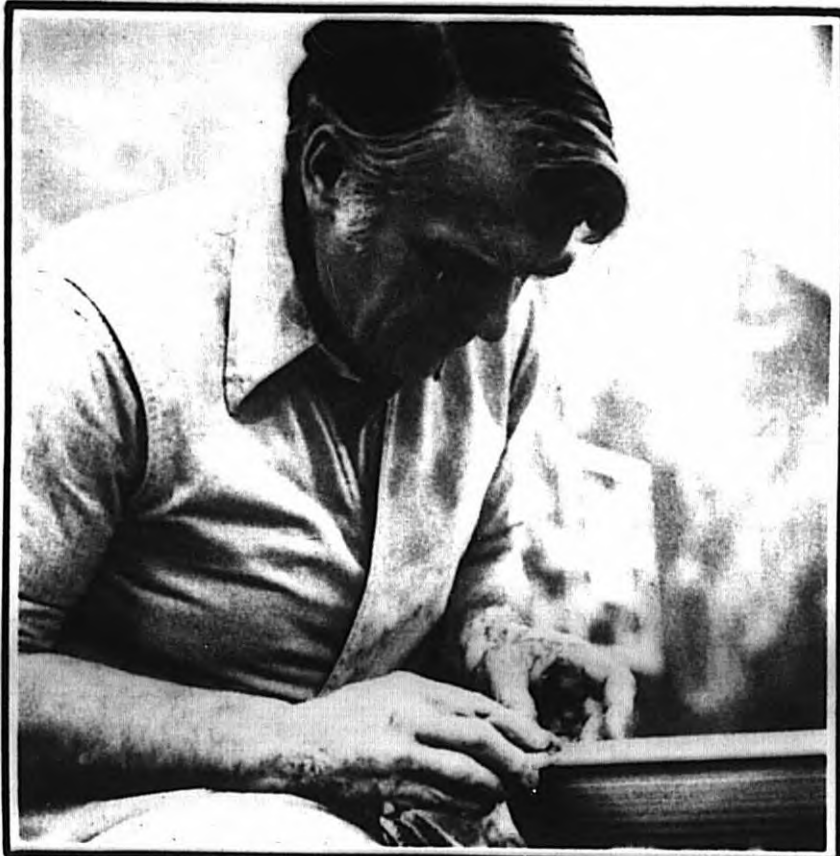
- Ceramic artist page 2
- Work-study page 3
- Jack Anderson page 4
- Ticket changes page 8



Steve Hauck—The Sunflower

Lady machine

Deb Hamilton's reflection giving this computer its own human countenance. Hamilton is the director of community special services at the Wichita Public Library. The computer is part of the Wichita Information Service (WISE) which aids students and scholars in research.



S. Taylor-Harris—The Sunflower

Cushing says self-knowledge is important to artist's success

"One of the big measures of whether you succeed or not as a product potter is your sense of what you are," said Val Cushing, who conducted a two-day ceramics workshop Wednesday and Thursday at Wichita State University.

Cushing, who was chosen Ceramic Artist of the Year, said the ideas for his pottery and ceramics works come from the way he perceives the form before the molding process.

"Most of my ideas come from forms of nature, particularly from forests and parks," he said.

Cushing told the workshop audience that those who planned to operate studios could anticipate spending their first year saying, "why didn't those damn teachers show me this?"

"I certainly believe if a student makes it clear his goal is to operate a studio," Cushing said, "the important issue they need to know is 'can you make pots as an individual that are expressive of yourself?'"

The silver-haired New York professor gently set his potter's wheel in motion and was ready to create his next pot when he said,

"You usually make your worst pots in demonstrations and that may well happen here today."

While making a casserole pot and lid, Cushing said, "I love to have the lid fit well, more so in a casserole than others. The relationship I like between the body and lid in a casserole is not only expressive but a function. You make functions fit the way you really feel about them."

When Cushing was asked about his feelings when he received the Artist of the Year award he said, "It is always nice when you are selected based on the decision of your colleagues and peers."

Cushing

FROM
Peter Pan

YOUR CONVENIENT - FRIENDLY
NEIGHBORHOOD STORE



NOVEMBER 4 thru 10

"FLAVOR of the WEEK"
**ALL FLAVORS
ICE CREAM
SALE**

Half Gal. **89¢**

FREEZER PAK **\$3.49**
4 Half Gallons

GRILL



**HAMBURGER,
FRENCH FRIES,
AND
10 oz. COKE**

REG. 99¢ **69¢**

Delicious! HOT DOGS
with all the trimmings **50¢ each**



FOUNTAIN



TAKE HOME SUNDAES
Chocolate • Strawberry • Butterscotch
• Pineapple

39¢ each 4/99¢

DAIRY DEPARTMENT

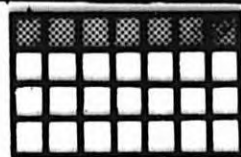
FULL LINE OF FRESH
DAIRY FOODS
CONVENIENT, FRIENDLY SERVICE



Peter Pan WICHITA AREA PETER PAN ICE CREAM STORES:

1601 E. Pawnee	997 S. Woodland	
2101 W. Maple	3404 N. Arkansas	
5017 E. 21st	850 N. Broadway	
2011 S. Seneca	7310 W. Central	
3221 S. Seneca	5602 E. Harry	
3302 W. Central	209 N. Park, Valley Center	
230 N. Baltimore, Derby	131 Grand, Haysville	

This Week



FRIDAY

Final day to officially drop a course with a "W". The Cellar will present Fantasy Blues Band. A \$1.75 cover charge includes two draws.

Administrative Management Society will meet at 7:30 p.m. at the Olde English Manor Clubhouse, 21st and Woodlawn. Jeff Spahn, an OSHA representative, will be the guest speaker.

Hot apple cider will be sold by AIESEC in Clinton Hall this morning. The price is 25 cents per cup.

The Student Homophile Association will sponsor its weekly gay walk-in center from 1 to 6 p.m. at the Counseling House, 1818 N. Yale. Those interested can stop by and talk. Counseling referrals are available.

Inter-Varsity Christian Fellowship will meet at 7:30 p.m. in Sumter Hall at Friends University. Mark Patterson will speak on "Body Life." This is the first joint meeting with the IVCF Chapter at Friends University.

The flicks, *The Sailor Who Fell from Grace with the Sea* and *Appleknockers and the Coke*, will be shown at 7 and 10 p.m. in the CAC Theater.

Colored Head Pin/Moonlight Bowling will be from 9 to 11 p.m. in CAC recreation.

Experimental Theatre will present "Gone by Morning" at 8 p.m. in Wilner Pit Theater.

SATURDAY

The Cellar will present Fantasy Blues Band. A \$1.75 cover charge includes two draws.

The flicks, *The Sailor Who Fell from Grace With the Sea* and *Appleknockers and the Coke*, will be shown at 7 and 10 p.m. in the CAC Theater.

Experimental Theatre will present "Gone by Morning" at 8 p.m. in Wilner Pit Theater.

SUNDAY

Family Theatre will present *Bored of Education*, *General Spanky* and cartoons at 3 and 7 p.m. in the CAC Theater.

Alpha Chi Omega Sorority will serve a chicken dinner from 12:30 to 6 p.m. at the sorority house. Tickets are \$2.50 for adults and \$1.25 for children under 12 and are available at the door.

Alpha Phi Omega, a co-ed service fraternity, will meet at 6:30 p.m. in room 254 CAC. All students interested in helping their campus are welcome.

Evening of Baroque planned

The Wichita State University Collegium Musicum will present an evening of baroque chamber music at 7:30 p.m. Tuesday in the Ulrich Museum of Art at Wichita State University. The concert was originally scheduled for Nov. 29.

The Collegium Musicum, in its second season under the direction of Sharon Girard, assistant professor of music history and literature, is a group of students, WSU faculty and townspeople who study and perform the music of the medieval, Renaissance and baroque periods using the instruments of those periods.

The baroque concert will feature works by L'Oillet, Telemann and Caccini. Another concert, featuring the instruments and music of the medieval and Renaissance periods is scheduled for 7:30 p.m. Dec. 2 at Grace Harvey Memorial Chapel.

The public is invited to the concert and to the reception following in the Ulrich Museum. There is no charge.

Jazz violinist to appear in Wichita

Jean-Luc Ponty, jazz violinist, will appear in concert with his six piece band, at 8 p.m. Nov. 19 in the Orpheum Theatre.

Born in France, Ponty was trained at age five in classical music by his father, a violin professor, and his mother a piano teacher. At age 13, Ponty left regular school to practice the violin six hours a day. At 15, he entered the Conservatoire National Supérieur de Musique de Paris where, after two years, he graduated with the school's highest award, the Premier Prix.

Student tickets for the concert may be purchased in the Campus Activities Center Activities Office for \$4.50 each with a limit of two tickets per student. Evening students may buy tickets at the ticket booth Monday or Tuesday from 5 to 7 p.m. General public tickets are on sale for \$5.50 at Argus, Budget or Sgt Pepper's. All tickets will be \$6 at the door.

The concert is being sponsored by the C.A.C. Concert Committee and KMUW-FM radio station.

"We've been flooded with calls concerning the concert already," said Denise Stiff, CAC program director. "It would be a good idea to buy your ticket early."

Friedrich Ebert, President of Germany's Weimar Republic during the 1920's says

I ATTRIBUTE ALL MY ZUCCESS TO DER FACT DAT I REGULARLY AT-TEND DER KIRBEES BEER GERSTORE. IT ISS GOOT STUFF!

KIRBY'S BEER STORE

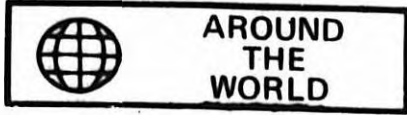
"A FULL SERVICE TAVERN"

- FEATURING: WAYNE AVERY LIVE WEDNESDAY NITES
- TRIVIA LIBRARY
- FREE LUNCH SATURDAY
- ★ AND INTRODUCING ★
CHEAP COFFEE — MORNINGS



News Budget . . .

From the wires of the Associated Press



MOSCOW — A group of Russian human rights activists opened a campaign Thursday to eliminate the death penalty, a punishment seldom publicized but reportedly often imposed in the Soviet Union.

Soviet law allows for capital punishment in cases of treason, murder, hijacking, attempted escape across Soviet borders and serious economic crimes, such as bribe-taking and large-scale embezzlement.



BOSTON — Doctors say they have found a way to determine before birth whether a baby will be crippled by a usually fatal, inherited form of muscular dystrophy.

Doctors say their method, a kind of prenatal blood test, can identify Duchenne's muscular dystrophy. This is a form of the disease that strikes only boys, but it is passed on to them by their mothers, who do not suffer its symptoms.

WASHINGTON — The Senate today toughened its position limiting when the federal government should pay for abortions as it tried to resolve a dispute with the House that has blocked a \$60.2 billion funding bill.

The bill includes coverage for abortions where a woman would suffer "severe or long-lasting physical health damage" if a fetus were carried to term. Damage to a woman's mental health wouldn't be a consideration.

WASHINGTON — The Senate completed congressional action Thursday on a bill authorizing money for the neutron bomb, a new nuclear weapon designed to emit heavy radiation but relatively little explosive power.

Money for the nuclear weapon was included in a final version of a \$1.9-billion authorization bill for the Energy Research and Development Administration.

WASHINGTON — The Senate defeated a Republican-backed effort Thursday to retain the traditional 50-50 split between employers and employees in the cost of financing Social Security.

The proposal by Sen. Carl T. Curtis, R-Neb., would have relied on an equal tax-rate increase for both employers and employees to help Social Security out of its financial troubles. It was rejected, 49-41.



GOODLAND — The first of four public hearings got underway Thursday to give western Kansans an opportunity to speak out on government plans to manage the state's dwindling supply of water.

Lt. Gov. Shelby Smith, chairman of a task force studying water, said he wanted to hear from local residents before the panel makes recommendations to the governor.

Students or hours may be cut from work-study program

The number of student employees working under the Wichita State University Work-study program, or the hours they work, may be cut because of the bill signed by President Carter this week raising the minimum wage.

The bill will raise minimum wage from \$2.30 to \$2.65 on Jan. 1, 1978, and then in annual steps over the next three years to \$3.35 an hour on Jan. 1, 1981.

James Rhatigan, dean of students, told student senators Wednesday night the University has two options if supplemental funds are not made available by the state to pay the increase in wages. Workers may be laid off or their hours may be cut.

The University is requesting state money to prevent cutting back the Work-study program, Rhatigan said.

Prior to Rhatigan's remarks, Denise Stiff, CAC program director, requested funds from the Senate to help pay for last week's Homecoming Dance. She said poor attendance at the concert resulted in a \$1,743.54 loss and requested the senate approve funds to pay part of the loss.

Stiff said the chairperson of the Homecoming Committee, Cheryl Kastens, left her with the impression the Student Senate was going to pay for half the concert expenses and the Homecoming Committee would pay the remainder.

Members of the Concert Committee signed the contract thinking they were responsible for only half the costs. They later found out the senate had not authorized Kastens money for the other half, Stiff said.

The senate, after refusing funds for the concert in two previous sessions, approved \$871 to pay half the loss.

Several other student organiza-

tions were recognized and granted funds by the senate.

AIESEC, an international organization of business students which provides reciprocal training in 55 countries received \$188; Alpha Kappa Delta was recognized and received \$50; Alpha Phi Omega was recognized; Wichita Free University received \$126; the Graduate Student Association of Urban Affairs was recognized and received \$75; Sigma Delta Chi was recognized and received \$211. Students in Advertising received \$83.90; WSU Chess Club, received \$197, and The World Student Association received \$133.

In other action the Senate: Passed a bill on fair testing for SGA applicants. Referred action on campaign finance limitations and referred it to the operations committee for study. Approved resolution on zero based budgeting for student organizations.

Spectrum fund-raising a success

Spectrum '77, KMUW's special 10-day fund-raising drive, ended last week with a considerable dollar amount increase over last year's campaign, according to Bob Nelson, development coordinator at KMUW.

"We didn't receive quite as many pledges as last year's campaign but more money was pledged this time," Nelson said. "The average pledge was \$12.50 a person compared to \$10 a person on the last drive. The station received a little over \$6,000 total in pledges compared to the \$5,000 received last spring."

Nelson expects a 100 percent collection on the pledges received. "We have had pledge money coming in very rapidly this week," he said. "In two weeks we expect 80 percent of the dollars pledged to be collected. The other 20 percent will be received within 30 days."

Although the fund drive was successful, Nelson said the purpose of the drive will continue.

"We will continue letting the Wichita community know about pledges and memberships that are available," he said. "It's from our listening audience that we get our financial support."

Nelson said KMUW could not have had such a successful campaign without the effort from the staff, the organizations that spent time promoting the campaign, and the talent that performed for the station. He also expressed appreciation to the telephone volunteers.

"Without these good people we could not keep the station in operation," he said. "Everyone is to be congratulated."

migrating?
THEN COME SEE NORTHEAST WICHITA'S MOST EXOTIC APARTMENT HOMES

 5400 E. 21st 686-8121
 MON.-SAT. 9 A.M.-7 P.M. SUN. 12-7
 Equal Housing Opportunity

B. Bad Bones wants you to find your way to the Bouncing Bucket Disco
 Just take K-15 to 47th South, go West 1-block to Clifton look for the **Bouncing Bucket sign**

unique handcrafted furniture



Includes sofa, chair and coffee table. Choice of three oiled finishes and a wide variety of fabrics - \$319.00

\$319.00

For a sampling of ideas stop by our showroom and check out a wide variety of handcrafted natural oiled wood designs in living room sets, dining groups, stereo cabinets, desks, bars and accessories at uniquely low prices!

7800 E. Harry 682-6973 100% financing available
 Mon.- Sat. 10-6, Sun. 1-6
 Thur. 10-8

CONTEMPORARY COMFORT

A CHAPLIN FILM MODERN TIMES
 Nov. 4th, 8 & 11 p.m.
 at **THE FORUM**
 2148 N. Broadway
 \$1.75

ROOTS 1977



Attorney General Bell won't ease up on Helms

by Jack Anderson with Joe Spear

WASHINGTON — We previously reported that the Justice Department was preparing to indict former CIA chief Richard Helms. The case against him grew out of a story we broke in 1972.

We reported at the time that the CIA had worked with the International Telephone and Telegraph company to block Chilean President Salvador Allende from taking office. Both the CIA and ITT denied the story. It took a Senate investigation to get the facts out.

Now a grand jury has recommended multiple-count indictments against Helms for misinforming the Senate.

But people in high places have brought tremendous pressure on Attorney General Griffin Bell to drop the case against Helms. They fear Helms may be forced to divulge national secrets in order to defend himself.

This could cause incalculable damage. Foreign intelligence services may also stop cooperating with the CIA if a CIA director can be compelled to divulge confidences in open court.

But the attorney general believes he has figured out a way to protect the national interest. He would present any sensitive evidence to the judge in secret. The judge would hear all the arguments for and against revealing the evidence. Then the Justice Department, of course, would abide by the judge's ruling.

The conscientious Griffin Bell believes CIA officials must be subject to the law. They cannot be excused from trial, he believes, on national security grounds. This would mean that CIA agents could break the law whenever they pleased, without any worry about facing trial.

Bell will consult with President Carter, however, before making the final decision whether to bring Richard Helms to trial.

Uneasy Peace: Two weeks ago, we told the backstage story of the Senate filibuster over natural gas prices. We reported that two Democratic senators, James Abourezk of South Dakota and Howard Metzenbaum of Ohio, were quietly urged by the White House to keep talking. Then the White House double-crossed them and helped to break

the filibuster. We reported that both senators were furious. Abourezk even called President Carter a liar.

Now we have a sequel to the story. Carter invited the two ruffled lawmakers to the White House to smoke the peace pipe with him. The president apologized to the senators. He was warm and complimentary. Officially, the hatchet was buried.

But privately, Abourezk and Metzenbaum still have their hackles up. They have confided to other senators that they're still "wary" of the White House. Several senators, in turn, offered to support Abourezk if he should decide to start another filibuster.

Biggest Threat: A prestigious Washington think tank called Worldwatch has isolated what they consider the greatest threat to our national security.

The study hasn't yet been released to the public. But we can reveal that it does not list Soviet missiles and H-bombs as our greatest menace.

The biggest danger, according to the study, is the oil shortage. We are running out of oil and we're not developing alternate energy sources.

We also have more to fear from pollution, the study claims, than from Soviet planes and ships. Yet little is being done, the study warns, about these most serious threats to our national security.

Diplomatic Pipeline: The Chinese communists have quietly kept up their contacts with ex-President Richard Nixon at San Clemente. The top Chinese diplomat in this country, Ambassador Huang Chen, has told us he is in regular touch with Nixon. He said the Chinese don't forget their friends. They will always be grateful to Nixon, Huang said, for reestablishing Chinese-American relations.

The Chinese won't drop Nixon, therefore, just because he has fallen from power. Huang said he still

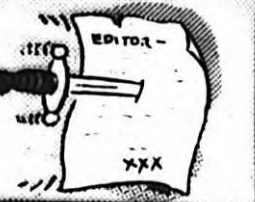
visits the former president on the West Coast.

The State Department was dismayed by South Africa's crack-down on black newspapers and organizations. Our inside sources say the United States will reconsider its relationship with South Africa.

Several moves are under discussion to dramatize America's displeasure. First, the State Department may discourage U.S. investment in South Africa. Then if the situation worsens, the United States might actually impose a trade boycott. The State Department may also reduce the size of the U.S. embassy in Johannesburg, or permanently withdraw the U.S. ambassador.

Headlines And Footnotes: The public will soon be paying a bit more for pesticides and pest sprays. The Environmental Protection Agency wants to equip the products with child-proof safety caps, similar to those now used on aspirin bottles. Prices will go up, as a result, about a nickel a can ... President Carter's top female aide, Midge Constanza, has infuriated fellow bureaucrats with her high-handed ways. They say she has a habit of writing angry letters about women's rights and then releasing them before the recipient has a chance to answer ... Rep. Abner Mikva, D-Ill., wouldn't accept the official word on the noise level of the supersonic Concorde airplane. He drove out to Washington's Dulles Airport to listen to the Concorde for himself.

Letters to the editor



Attending WSU costly

Editor:

The cost of attending WSU consists of two primary factors: tuition and fees. Tuition is set up the Board of Regents, and is based on a percentage of the actual cost of education (students pay somewhere between 20 and 25 percent of the expense in Kansas). Fees, at WSU, are set by the SGA Student Senate.

Last year, the increase in the amount of fees assessed per credit hour was kept very low by the Senate. The Board of Regents, however, did increase tuition by a very significant amount (\$50 per semester for a full time student).

The Student Senate is going to be faced with determining the amount by which fees will increase for the next academic year. There will be two choices: either increase fees by a fairly large amount, or cut back on some of the programs paid for by student fees. More students need to find out what the implications of these alternative solutions are.

A complicating factor is that the Student Senate elections will come before the fee allocation process. Therefore, many of the students

that are on the Senate now will not be around to vote on student fee increases in the Spring. There is, however, a good amount of continuity from one Senate to the next, so opinions expressed now will probably be remembered.

The people that provide services through student fees put a lot of pressure on the Senate to fund their programs. If no students show concern about fee increases, the Senate has little feeling for what should be done. Thus, the unchallenged argument of the sponsor of the program carries much weight.

Senate does a lot of odd things, but it also does many things that really affect students. Control of fees is only one example. The cost of education at WSU will undoubtedly be greater next year (1978-79) than it is this year, but the decisions of the Student Senate will be what determines the amount of that increase. If you want student fees to increase, you won't have to do anything, but if you would rather they stayed as low as possible, you'll have to do a little work.

Jay Fulton,
Student Senator

Is Boyd running for Homecoming Queen?

Editor:

I have noticed recently in several issues of the *Sunflower* the advertisements of the SGA Treasurer, Inman Boyd. The ads are impossible for the reader to avoid; of course, that is Mr. Boyd's intention.

Perhaps there is nothing wrong with the SGA Treasurer advertising his office hours, but why is Mr. Boyd the only SGA officer to do so? Why not the President or the Ombudsman? And who is paying

for these ads?

A close examination of the ads may reveal the true intention of Mr. Boyd. The words "INMAN BOYD" are twice the size of "SGA Treasurer" or "Office Hours." Obviously, Mr. Boyd is advertising himself. I only wish he would announce for SGA President or for Homecoming Queen before placing any more ads in the *Sunflower*.

Art Willard
Political Science

Express yourself

The *Sunflower* welcomes letters to the editor regarding the newspaper or any aspect of the University community. Anyone inclined to speak out can use the paper as a public forum for comments and ideas.

Letters must be typed, triple-spaced, signed (names will be withheld on written request), and limited to 500 words (two triple-spaced pages). The editor reserves the right to edit, reject and publish at his discretion. Letters should be addressed to: Letters to the editor, The *Sunflower* (Box O), Wichita State University, 1845 N. Fairmount, Wichita, Kan., 67208.

The Sunflower

Editor	Patrick Jennings
Managing Editor	W.E. Turner
News Editor	Gary Freed
Photo Editor	Larry Lochmann
Campus Editor	Roxanne Wilson
Adviser	Les Anderson
Production Manager	Janice Trimmell
Advertising Manager	Tad Snarenberger
Office Manager	Lanette Moore
Business Coordinator	Mary Ann Myers
Circulation Manager	Duane Schrag

Circulation 10,500

The editorials, columns and letters to the editor on this page reflect only the opinion and knowledge of the writers. Comments on items on this page may be sent as letters to the editor and must be typed and signed. Names will be withheld upon request. The editor reserves the right to edit, reject or make conform to space limitations any letters or contributions. Copy should be limited to 2

triple-spaced, typewritten pages. Published at Wichita State University on Monday, Wednesday and Friday during the Spring and Fall Terms and once a week, on Thursday, during Summer Session. Second class Postage paid at WSU, Box 10, Wichita, Kansas 67208. Subscription rate \$18 per year and \$1.50 for Summer Session.

FOCUS *on campus*

ROXANNE WILSON, Campus Editor

THE HARRY S. TRUMAN SCHOLARSHIP is available to students who will be juniors with at least a "B" grade average and are pursuing a bachelor's degree. Application deadline is Nov. 14. For more information contact James Kuklinski, 426 Liberal Arts, 689-3165.

OMICRON DELTA KAPPA LEADERSHIP HONORARY SOCIETY applications for membership are available in Student Affairs, 101 Morrison Hall, and Bureaucracy, Ltd. in the CAC. Anyone completing 60 semester hours with a 3.2 grade point average by the close of the fall semester is eligible to apply. Deadline for application is Nov. 28.

SOCIAL WORK STUDENTS AND INSTRUCTORS will gather from 10 a.m. to 3 p.m. Wednesday in the CAC Kansas Room. Refreshments will be served. Anyone interested in getting acquainted with the social work program is welcome.

THE COUNSELING CENTER'S BROWN BAG COMMUNICATION WORKSHOP will begin its third session at 11:30 a.m. to 1:30 p.m. Thursday. This session will focus on "Communicating Feelings." Register at the Counseling Center, 125 McKinley, 689-3440.

THE BIOLOGY CLUB is offering \$15 for the design of a club emblem. The emblem must encompass botany, zoology and microbiology only. Send entries to Biology Club, box 26, Life Sciences Building. Deadline is Nov. 14. Biology faculty, staff and club officers are not eligible for competition.

SGA has openings on the Student Senate for graduate/continuing education representative and proportional representatives. All students are eligible for the position of proportional representative. Students enrolled in graduate school or continuing education are eligible for the graduate/continuing education representative. The Senate is also accepting nominations for the vacant seat on University Senate. Applications are available in room 212, CAC, 689-3480.



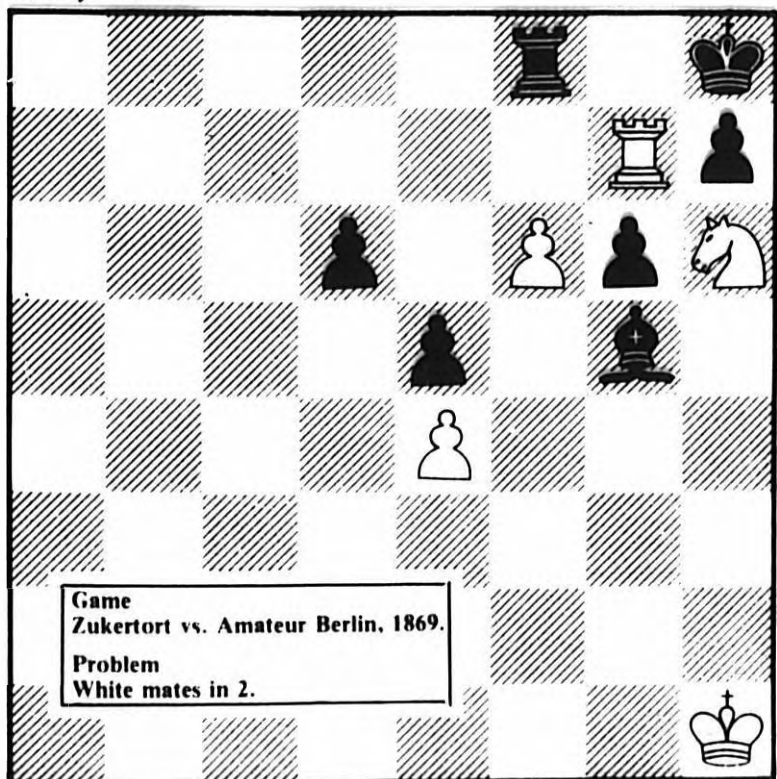
Featuring many of the top players in the area, the Wichita State University Chess Club hosted its first official Unofficial Speed Tourney last Thursday night. Jack McClurg finished on top with Bill McLaughlin and Hugh Conyac close behind. These speed events are scheduled to become a regular feature of club meetings Monday afternoons and Thursday nights.

Things are gearing up for the 1977 Kansas Team Championships to be held in Topeka Nov. 12. If you'd like to go or even play on a team representing Wichita, contact the WSU Chess Club or Carl Sorg at 264-3400.

Walter Browne, 28-year-old grandmaster from California, won his third consecutive U.S. Championship. Browne won \$3,500 by winning the final round while second-place winner Robert Byrne got \$2,500. The total prize fund was \$15,000. Six-time champion Samuel Reshevsky, 66, turned in an outstanding performance by finishing in a tie for third with 1973 co-champion John Grefe.

The Korchnoi-Spassky match is scheduled to begin Nov. 15 in Yugoslavia. The winner will play Anatoly Karpov for the World Championship next year.

The Gremlins were busy again last week with the chess problems. Just switch the problems and the solutions around and they should work. In the meantime, try this week's problem. Check you then.



(Solution 1. R-N8+, RxR 2. N-B7 mate.)

WISE service at library

*from page 1

Sometimes they will get information they need right on the computer."

Hamilton said information will be provided at the terminal in the library, but if it looks like the list of citations is too long, the library can request the information be printed off-line and mailed to avoid undue expense.

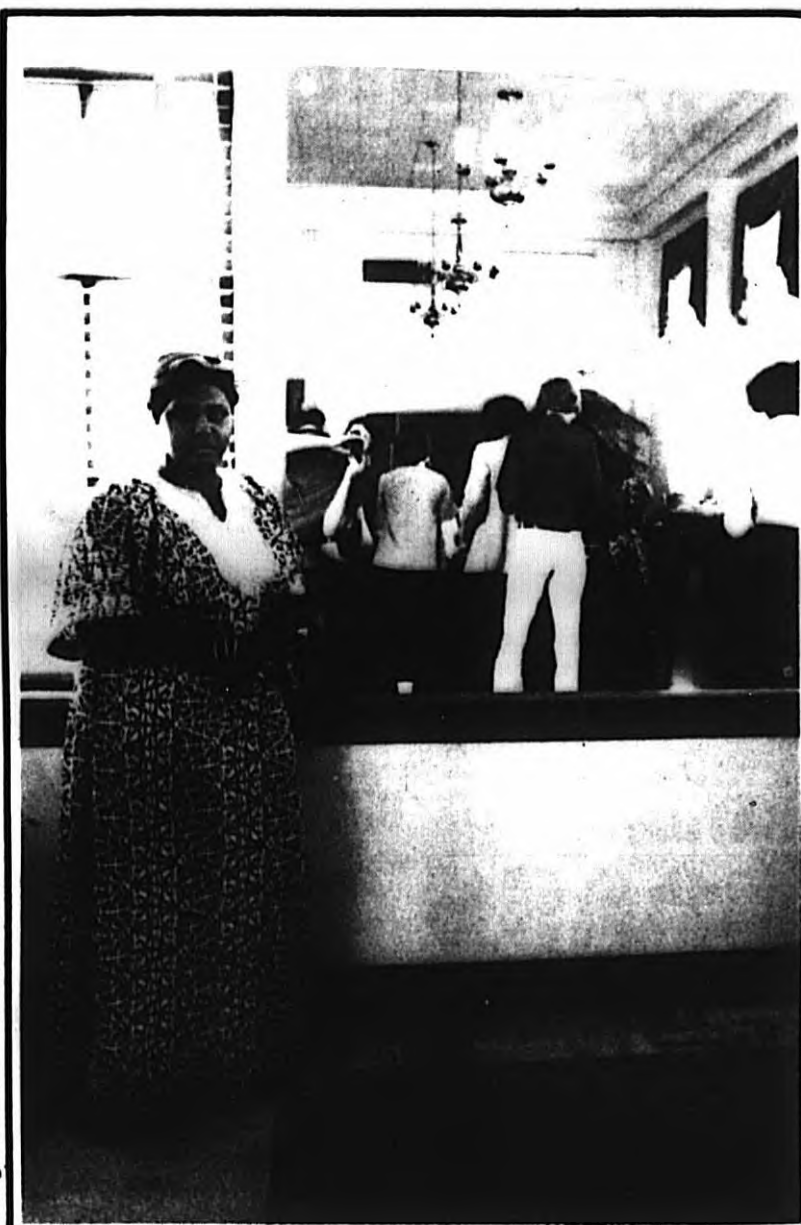
After the list of research material is obtained, the library will work through interlibrary loan to obtain whatever periodical is listed on the printout without any extra charge.

"We do not charge for staff time or interlibrary loan," Hamilton said. "We never do. What we do charge for is data base connect time which is computer time because we are charged for that."

Orbit and Dialog systems each include up to 60 to 100 subject oriented data bases and each of them contain, in computerized form, information about the contents of 150 to 170 periodicals in particular subject fields. There is no better service available anywhere, Hamilton said.

"For the money, they (the public) are going to be able to work through trained specialists with an enormous width and breadth of information and get the most current information available anywhere."

Craig Sharer - The Sunflower



Le Zachary, president of the Black Students Unified (BSU), taking time out during Thursday's ethnic food sampling in the Morrison Hall board room, one of several events planned for Black Heritage Week.

Dashika dressed

'Kansas Health Day' is today

Mike Samuels, associate bureau director for rural health in the U.S. Department of Health, Education and Welfare, will be the keynote speaker today at the annual Kansas Health Day in Wichita.

Samuels will speak on the "Recruiting Physicians: The Health Approach," at 11:45 this morning in the Center Ballroom of the Broadview Hotel.

Kansas Health Day is being sponsored by the College of Health Related Professions at Wichita State University and the University of Kansas School of Medicine-Wichita.

The day's program activities get underway at 8:30 a.m. with a panel discussion in the Broadview's North Ballroom.

Bus transportation to the Broadview will be provided for WSU students beginning at 1 p.m. and leaving hourly from the west side of the Life Sciences Building.

Anyone having questions about Kansas Health Day can contact Charles Hundley, chairperson of the community health education department, at 689-3626.

2 for 1

INTRODUCTORY SPECIAL
2 weeks

Nov. 2nd thru
Nov. 16th



Ham Sandwiches with Homemade white or rye bread served complete with chips and a crisp pickle.

11 am 'till 3 pm
17th & Gentry
Adjacent to WSU

YOU'RE GONNA LOVE THIS OFFER!

BUY ONE
Chili BURRITO



GET ONE FREE!

The chili burrito's our newest taste treat... two Taco Tico favorites combined: our famous burrito smothered in our own zesty chili. You're gonna love it!

BUY ONE CHILI BURRITO
GET ONE FREE
WITH THIS COUPON

Offer expires 11-18
Good only at participating Taco Tico's
Limit one coupon per customer

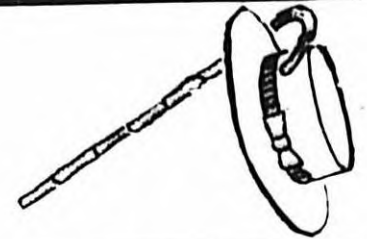
11 Convenient Wichita Locations
... now open, 21st & Woodlawn



D.U.S.T.
IS
COMING
Watch For It



ENTERTAINMENT



The sailor who fell from grace with the sea

Kris Kristofferson



Sarah Miles

- plus -
Appleknockers and the Coke
 Fri. & Sat.
 7 and 10 pm
 CAC Theatre
 \$1.25 with current
 WSU registration

THE ULTIMATE IN LATE NIGHT FLICKS...FROM THE NEW KLEO

FRIDAY & SATURDAY! 5 UNIT FREAK 'GRASS WARS'

1 REEFER MADNESS & WILD WEED MIDNITE FLICKS
 HUNTING A THRILL... THEY INHALED A DOSE OF CONCENTRATED SIN!
2 PINK PANTHERS
3 STOOGES COMEDY most ridiculous movie ever made
4 **5**

SHOW STARTS 12:30 A.M.

TWIN DRIVE-IN THEATRE
LANDMARK

HYDRAULIC at MacARTHUR RD.

CHEAP THRILL PRICE-\$3.00 PER CAR



Steve Hauck—The Sunflower

Family feud

Grandmother (Deborah Tarleton) and grandson (Ned Berry) heading for an argument in this scene from Experimental Theatre's production of 'Gone by Morning.' The play will run through tomorrow in the Pit Theatre of Wilner Auditorium.

University Opera to present a comic opera by Strauss

"Ariadne on Naxos," Richard Strauss' comic opera based on the Greek myth of Ariadne's desertion by Theseus on the island of Naxos, will be the Wichita State University's Opera Theatre's fall production.

The opera, under the direction of George Gibson, associate professor and director of Opera Theatre, and Ron Wilson, assistant director of Opera Theatre, will open Thursday in Miller Concert Hall in the Duerksen Fine Arts Center.

Jay Decker, director of orchestras, will direct the WSU Orchestra.

The two-part comic opera is a play-within-a-play. It opens with a prologue in which preparations for "Ariadne on Naxos," a new opera to be presented by a rich nobleman for his guests, have reached the feverish point.

The host has also hired a Commedia del Arte troupe to entertain the guests and both groups must limit their performances.

In a combination performance, the two groups play in opposition to each other. The opera centers around Ariadne, abandoned by Theseus on Naxos, and her beloved Bacchus. The Commedia del Arte troupe, under the leadership of the fickle and faithless Zerbinetta, provides the comic relief.

Janice Miller and Louise Neal will sing Ariadne on alternate nights. Zerbinetta, leader of the Commedia del Arte troupe, is sung by Beverly Hoch. Vernon Yenne, associate professor of voice, will sing Bacchus.

Other members of the cast are Marlene Flood and Mary Law, the Composer; Fred Keller and Michael Swafford, the Music Teacher, and Roy Wilbur and Richard Campbell, Harlequin and Major Domo.

Tickets, available from the WSU Division of Music, are \$2.50 for adults and \$1.50 for students. Group rates are available for students.

Performances will be at 7:30 p.m. on Thursday, Saturday, Sunday and Tuesday.

THE MOST HILARIOUS, WILDEST MOVIE EVER! *



* MAYBE

R

"Insanely funny, and irreverent!"
 —PLAYBOY

THE GROOVE TUBE

NOW IN TWO THEATRES

Fox Times
 EVENINGS AT
 8:00-7:30-9:00
 SAT & SUN MATS
 1:30-3:00-4:30

FOX TWIN
 135 N. WATER
 262-5197

CINEMAS WEST TIMES:

DAILY AT
 2:30-4:05
 5:40-7:10-9:00

cinemas west 4
 W. CENTRAL & TYLER RD.

Dorothy's off to see The Wizard!

The Scarecrow is a surfer...
 The Tin Man is a greaser...
 The Lion is a biker...
 The Wicked Witch drives a semi...
 The Good Fairy is gay...
 The Wizard is a rock superstar in...



Just follow the yellow rock road.

Starring JOY DUNSTAN · GRAHAM MATTERS · BRUCE SPENCE · GARY WADDELL · MICHAEL CARMAN · ROBIN RAMSAY · PAULA MAXWELL · NED KELLY · Produced by CHRIS LOFVEN & LYNE HELMS · Associate Producer JANE SCOTT · Written and Directed by CHRIS LOFVEN · Music by ROSS WILSON

R RESTRICTED

BOULEVARD
 100 GEORGE WASHINGTON
 617-6771

Nightly at 7:30 - 9:15
 Mat. Sat. & Sun. at:
 2:15 - 4:00 - 5:50

Did you know?

No one can park in a designated loading zone unless a valid "loading permit" is displayed.

Shockers take two-game winning streak to Louisville

Two high octane offenses meet at 12:30 CST, tomorrow when Wichita State University takes its two-game winning streak into Louisville to face the Louisville Cardinals.

It is no secret that both teams can put the points on the board. The Cardinals humiliated Marshall 56-0 last week while the Shockers were beating Long Beach State 35-21. Vince Gibson's squad has scored 181 points in posting a 4-3-1 record, while Jim Wright's Shockers have 186 points and a 4-4 mark.

Louisville has possibly the best running combination WSU will face all year. Fullback Nathan

Poole has carried the ball for 719 yards and five touchdowns and tailback Calvin Prince has 673 yards and six touchdowns.

Stu Stram, son of New Orleans Saints head coach Hank Stram, is expected to start at quarterback for

the Cardinals. Stram made his first start last week after starting much of last year as a freshman.

For the year, Stram and the Cardinals other quarterback, Randy Butler, have thrown for over 600 yards and three touchdowns each.

Tight end Marc Mitchell has been on the receiving end of four of those touchdown passes. Mitchell has caught 19 passes for 275 during the year.

The Louisville defense is headed up by lightning quick linebacker Otis Wilson who has 120 tackles and has thrown opposing ball carriers for a total of 66 yards in losses.

The Shockers, meanwhile, continue to lead the Missouri Valley Conference in total offense, averaging 345 yards and 23.2 points a contest.

WSU quarterback Jim Andrus leads the Valley in total offense with 155 yards a game, and in passing with 74 completions for 1,080 yards and nine touchdowns.

Women roundballers lack experience

By KATHY IVY

With the season opener just two weeks away, Wichita State University's women's basketball team has concluded three weeks of practice after welcoming back only three members of last year's squad.

The trio is headed by 5-foot-11 center Beth Epp, who was the second leading scorer last season with an 11-point average. The remainder of the experience will come from 5-foot-6 Betsy Jounagan, 5-foot-4 Teri Teal.

The Shockers will be forced to utilize the talents of nine first-year team members who will help to round out the scoring attack, according to coach Larry Thye.

The much needed height will be supplied by 6-foot Julie Lemon, 5-foot-10 Beth Stewart, and 5-foot-9 Debbie Muirhead. Shari West, a transfer student from St. Mary of the Plains, leads a quartet of 5-

foot-6 players. She is joined by Sherry Ashworth, Kim Cochren and Vivian Fulton. Terri O'Bryon and Sandy Smith, at 5 feet 8 and 5 feet 5 respectively, round out the list of the WSU lineup.

"We've got a better attitude than we've had in the past," said Thye. "We have a lot of inexperienced players but I think we'll make up for that in hustle and desire."

The Shockers open the season with back-to-back home games against the University of Missouri Nov. 19 and Tabor College Nov. 22. All home games begin at 7:30 p.m. and are played in Henry Levitt Arena.

Ready, set, go— for 5 best runners

By MIKE CUENCA

Tomorrow in Canyon, Tex., the best runners in the Missouri Valley Conference will toe the line and race five miles for the MVC title.

Among those competing will be a seven-man squad representing Wichita State University, led by captain Terry Glenn.

Herm Wilson, WSU coach, has chosen as his seven best; Glenn, Dave Anders, Brent Coffman, Tim Hiebert, James Means, Dennis Moon and Kendall Smith. The seven will compete to regain the MVC championship—a title won by WSU five of the last six years.

In the individual competition, Boyd Nansel of Drake will be attempting to win an unprecedented third consecutive championship. According to Wilson, he'll have to work for it.

"The race will be between Nansel, Joseph Kemei of West Texas State, Mike Sawyer of Southern Illinois and Terry Glenn," Wilson said. "And it may come down to whomever has the better day."

As a team, Wilson expects the Shockers to have their hands full with last year's winner, SIU, Drake and the host team, West Texas State.

"The meet will depend upon the performances of the entire field," Wilson predicted. "If any one member of any team slides, that team will be hurt."

"We have a good chance to win it if we can run well as a team," Wilson said. "Although the favorites have to be SIU and West Texas, both teams have great depth and West Texas has the advantage of being at home."

Only two current Shockers ran in last year's MVC championship, seniors Kendall Smith and Brent Coffman. The two placed 11th and 14th, respectively.

The meet will be run at 11 a.m. Saturday at the Hunsley Hills Golf Course in Canyon.

SHOCKER CLASSIFIED

CLASSIFIED ADVERTISING RATES \$2.00/125 words (65 ea additional 10 words) All caps, bold face or italics included. Cash on all copy required. CLASSIFIED DISPLAY \$3.50/col. inch (1 inch minimum) Border, variations in type styles and clip art included. DEADLINES Publication Monday Thursday 5 p.m. Publication Wednesday Friday 5 p.m. Publication Friday Tuesday 5 p.m. No responsibility assumed for more than one incorrect insertion. Rm. 001, Wilner Auditorium (Box 0) - (316) 689-3642

Employment

BUSINESS PEOPLE

Business/Econ grads now wanted for business positions throughout the United States in VISTA (Volunteers in Service to America). Excellent opportunities with great responsibility for highly motivated individuals. These one year appointments are held in high regard by national business firms - looks good on resume. Travel, living expenses, medical benefits. No upper age limit. For more info call NOVEMBER 8, 9 CAREER PLANNING & PLACEMENT CENTER MORRISON HALL INFORMATION TABLE IN UNION.

SOCIAL WORKER

Volunteers in Service of America offers you gut-level, grass roots experience in sociology, guidance, social work, counseling. Your degree and/or experience is needed to develop programs in health ed, preventive medicine, adult literacy, pre-school. Positions available throughout the United States - take your choice. Paid travel, monthly living allowance, health care. No upper age limit. For more info call NOVEMBER 8, 9 CAREER PLANNING & PLACEMENT CENTER MORRISON HALL INFORMATION TABLE IN UNION.

Wanted - Campus or off campus T-shirt sales reps. for the fastest growing screen printing co. in Kansas. Call High Plains Graphics. Dial 1-837-4256. THE T-SHIRT SPECIALIST

SKI AND TENNIS SHOPPE has positions open for ski repair and part time sales. Apply now. Call 686-2792 for an appointment.

Pinkerton's taking applications for male and female guards full-time or part-time. Two shifts a wk. or five shifts a wk. Work on holidays and weekends. Uniforms furnished. Need telephone and automobile. Clear police record. Apply - 1540 N. Broadway No. 203

Part-time clerk, nights. South end of Wichita. Call after 6:00 p.m. 788-1001.

For Sale

FOR SALE. Brother Electric 3000 typewriter, good condition, \$75. Call 686-8440.

Services

ABORTION INFORMATION Pregnancy tests arranged "CHOICE" 685-9121

DISTRESSED WITH UNPLANNED PREGNANCY? Free pregnancy test Confidential BIRTHRIGHT 265-0134, 1004 North Market.

PREGNANT? Testing, counseling. All alternatives, by appt HEALTH DEPT 268-8241

Fast, accurate, professional typing of papers, articles, thesis & manuscripts. Special Student Rates. Andrea M. Ramsay Professional Business Service. 683-7831

Personals

To the Phi Delta Theta Pledge Class: Congratulations on an outstanding float. You are No. 1 with us. Your active chapter.

WANT TO BE \$15.00 RICHER?? All you have to do is design a suitable emblem for the Biology Club. The emblem should portray the three disciplines in biology offered at WSU: Botany, Zoology, and Microbiology. Each area should be equally represented. Send entries to Biology Club, Box 26, Life Sciences Building. Contest deadline is Monday Nov. 14. Biology Faculty, staff, and club officers are not eligible for competition.

Housing

DREAMER'S PRICE

Studios at \$125
One Bedroom at \$145
Two Bedroom at \$185
Mathewson Manor
Apartments

Graham Dorian Enterprises
1516 E. 3rd 262-3769
GDE

DUPLEX FOR RENT 8702 Lakeland Circle. 3 bedrooms living and dining room, kitchen w/disposal, range, large family room, utility room with washer-dryer hookups. Fully carpeted 1 1/2 baths. Large patio. Trash and water paid. Yard work done. Two car garage. No pets. 685-3534. Ask for Jim.

1 Bedroom Duplex, Carpet, Stove, refrigerator, trash, drapes. Off street parking, near WSU. Nice, clean. Unfurnished \$150.00, furnished \$170.00 monthly. Call 722-8390

The Sunflower
Phone number
is
689-3640

SUNFLOWER
ADS
BRING
RESULTS

The Sunflower
business office
689-3642

Thanks to you
it works...

FOR ALL
OF US



United Way

Advertising contributed
for the public good.




COLLEGE

INN

\$1.00 pitchers
20 cent Draws
— DAILY —
12-7:30p.m.
2938 E. 21st

SPORTS NOTES

By STEVE PIKE



THE QUESTION of whether Wichita State University has finally come of age in its football program could be answered tomorrow. The same can be said of Louisville, the Shockers opponent.

Both teams have looked impressive recently. WSU clubbing Drake 47-17 and Long Beach State 35-21 while the Cardinals destroyed Marshall 56-0 last week. Jim Wright of Wichita State and Vince Gibson of Louisville seem to have their clubs headed in the same direction—but the decision on which coach has taken his team higher will have to wait until the game. The outcome will not be a positive indicator, but it should be a good measuring stick.

There is no doubt Gibson has done a fine job at the Cardinal helm since he went to Louisville in 1975. That season the Cardinals finished 1-10, last year Gibson's squad finished 4-7. This season the Cardinals are 4-3-1 with games remaining against WSU, Drake and Indiana State, all at home.

Wright has had one year longer to improve WSU's football fortunes than it has taken Gibson at Louisville. But Gibson's teams did not have to battle the likes of Oklahoma State, Colorado, Kansas State and Iowa State.

True, Louisville did play Pittsburgh and Alabama last year, and the Tide again this season, but not on successive weekends.

The Shockers in 1974, Wright's first season, faced Oklahoma State and Kansas State back-to-back. The following year, WSU played Oklahoma State, Kansas State and Colorado in three weeks and sat trounced by a collective score of 118-0.

Only now, two years later, do the Shockers seem to be recovering from those nightmare Saturdays of '74 and '75.

THE KANSAS CITY CHIEFS firing of head coach Paul Wiggin, while not a complete surprise, probably will do nothing to help the club. The Chiefs, 1-6, have only two games left where they have even a faint hope of winning. They play Green Bay this Sunday in Arrowhead Stadium and Seattle on Dec. 11, also at home. Teams the Chiefs will need divine intervention to beat are Chicago, Denver, Cincinnati, Houston and Oakland.

Although new head man Tom Bettis is a good coach, he is responsible for developing KC's secondary, the only decent part of the team, and he cannot work the miracles owner Lamar Hunt and President Jack Steadman want.

TOMORROW NIGHT'S heavyweight fight between Ken Norton and Jimmy Young will decide more than who will get another shot at Muhammad Ali. The fight could well determine the future of boxing in the heavyweight class after Ali is gone from the scene.

If the fight turns out to be as exciting as the promoters hope, it will be a good sign for heavyweight boxing. If not, then promoters, as well as other heavyweight fighters, had better hope Ali never retires. Despite his age and fading skills, Ali is still their meal ticket.

I'll go with Norton winning the fight in a decision. Young is a good fighter, but his defensive style tends to work against him in the eyes of the judges. Judges look for the aggressor in a fight and that should be Norton in this one.

Job Corner

Information on these and other job opportunities is available at the Career Planning and Placement Center, 004 Morrison Hall. Refer to the job number when you inquire.

STUDENT EMPLOYMENT

Job 210 — Night Clerk in BankAmericard Department doing general clerical work. November through January. M-Th, 5-9 p.m. and 12-6 p.m. on Sundays. Salary: \$3.15 per hour.

Job 216 — Courier. Applicants must be presentable, have sophomore or better class standing, and have own transportation. M-F 2 p.m. or 3 p.m. to 5:30 p.m. Salary: \$200. per month.

Job 217 — EKG Technician. Will train on job. Can work either shifts: 5 days week - 7 a.m. to 11 a.m. or rotating weekends and holidays - 3:00 to 9:30 p.m. Salary: \$3.13 per hour.

Job 220 — Teacher Aide-will be supervising 12-14 children with assistance of another aide until bedtime. Can study after children are asleep at 9 p.m. M-F, 6 p.m. to 1 a.m. Salary: \$2.50 per hour.

CAREER EMPLOYMENT

Job 388 — Security and Safety Management Trainee. Must have degree with major in Administration of Justice preferred, but other majors considered; willingness to relocate after 16 week training program. Salary: Open.

Job 389 — Systems Analyst Programmers. Bachelor's or master's degree in computer science or a degree in mathematics, industrial engineering, or business administration with several courses in computer science. Salary: negotiable.

Job 390 — Accountant. Bachelor's degree in accounting. Salary: negotiable.

Job 395 — Microbiologist. Bachelor's degree in microbiology or biology with an emphasis in microbiology. Salary: \$800. to \$900. per month.

Ticket buying changes made in basketball sales

There will be some changes in the student ticket policy for basketball games at Wichita State University this year.

One change is that a student can buy no more than six student and six guest tickets. Another change is that student guest tickets will go on sale at the same time as student season tickets.

A student can purchase a guest ticket for every student ticket he buys, provided he has a paid fees receipt for every student ticket.

Groups will be able to buy tickets in blocs if

their members purchase the tickets at the same time and have a current paid fee receipt for each student ticket purchased.

Eric Davis, SGA vice-president, said the new policy will cause a hardship for large groups, but the Student Senate believes it will be the most equitable plan for all students at the University.

Tickets will go on sale Tuesday at the ticket office in Henry Levitt Arena and will cost \$33.75 for full-time students; \$37.50 for part-time students, and \$41.25 for guest tickets.

Family Theatre Presents

- ★ Bored of Education
- ★ General Spanky (& Our Gang)
- ★ Cartoons

Sunday, Nov. 6th at 3 & 7 pm
children 50¢, adults \$1.00
with current WSU registration
CAC Theater

Did You Know?

Anyone contemplating purchasing a used car may telephone free to the National Highway Traffic Safety Administration to check recall information on a particular model of automobile. The toll free number of the Office of Consumer Services is 1-800-424-9393.

TACO TICO

GRAND OPENING

FIESTA



5120 E. 21st

November 3, 4, 5
Thurs., Fri., Sat.

10¢ OFF ON A BURRITO WITH COUPON <small>Offer expires Nov. 19 One coupon per customer</small>	15¢ OFF ON A SANCHO WITH COUPON <small>Offer expires Nov. 19 One coupon per customer</small>	20¢ OFF ON A TICO DINNER WITH COUPON <small>Offer expires Nov. 19 One coupon per customer</small>
---	--	---

- Register to win a **FREE 10 Speed Bike** at 5120 E. 21st location only
- **FREE 10 oz. Pepsi** with any food purchase at 5120 E. 21st. location only
- **Free balloons**

Sanchos Tacos Tostadas Tamales Tacoburgers		Chili Burritos Burritos Tamale Pie Enchiladas Tico Dinner Plate
--	---	---

Always in season and seasoned to please®