



HLC Accreditation 2016-2017

Evidence Document

Academic Affairs

Office of Planning and Analysis

Classroom Utilization Report for Fall 2015 Census Day

Additional information:

Classroom Utilization Report For Fall 2015 Census

Figure 1: Fall 2015 20th day Main Campus Class Sections (crn) by Time and Day (all class types

Figure 2: Fall 2015 20th day Main Campus Student Enrollment by Time and Day (all class types

Figure 3: Comparison of Student Headcount Concentrations for Classrooms by Time of Day

Table 1: Selected Course Dimensions for 2015 Fall 20thday

Table 2: Course¹ Time of Day and Day of Week Offerings, 1980 to 2015

Table 3: Rooms Designated as Classroom Purpose (bcat_code 110 or 120) in use on 20th day Fall 2015

Table 4: Classroom related Sections (crn), Students & Room Utilization Rates by Time of Day on 20thday Fall 2015

Table 5: All Class Sections (crn), Student Headcounts and Room Utilization Rates by Time of Day on 20thday Fall 2015

Figure 1: Fall 2015 20th day Main Campus Class Sections (crn) by Time and Day (all class types)

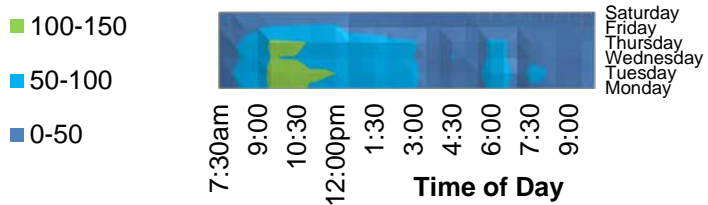
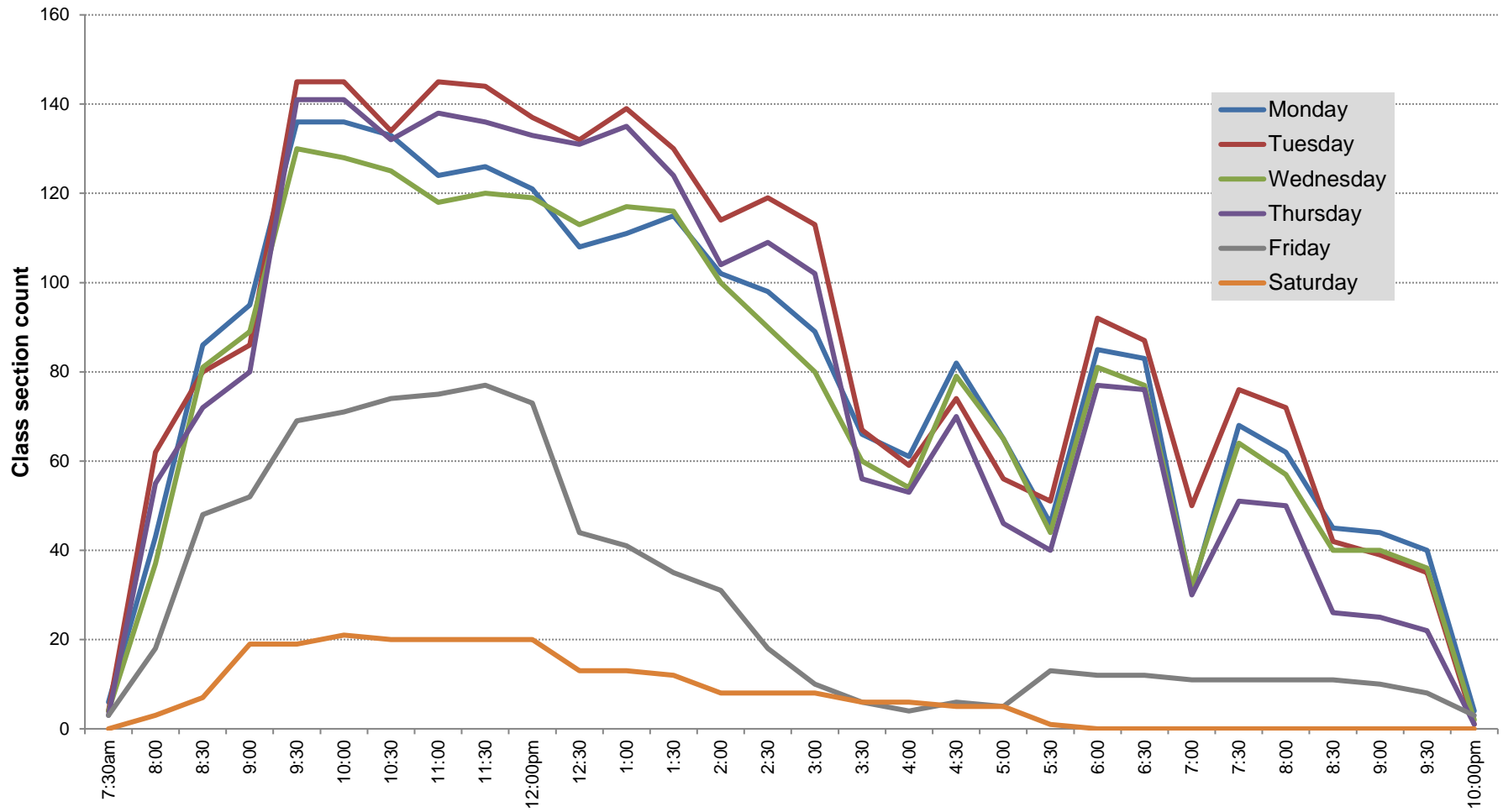


Figure 2: Fall 2015 20th day Main Campus Student Enrollment by Time and Day (all class types)

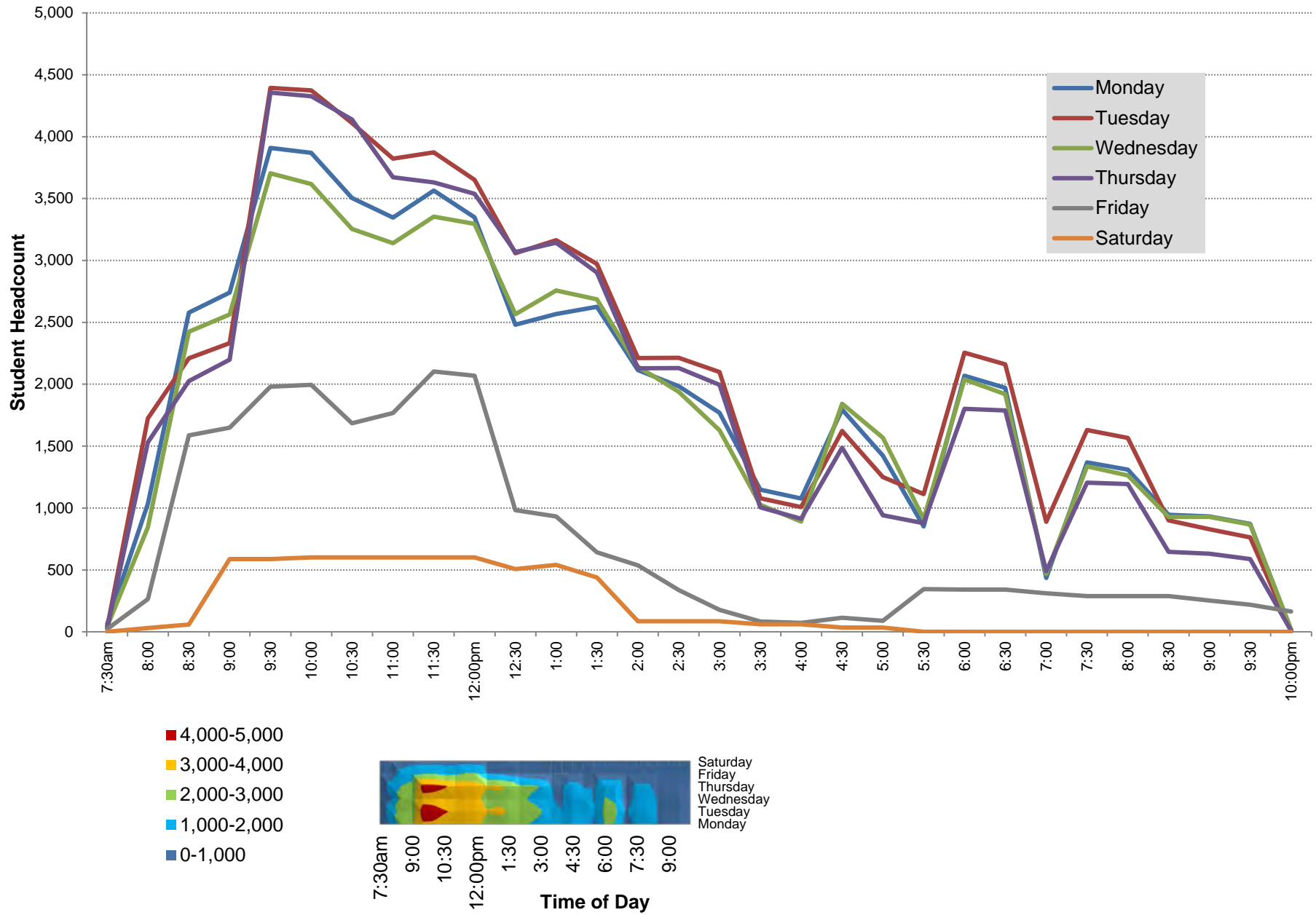
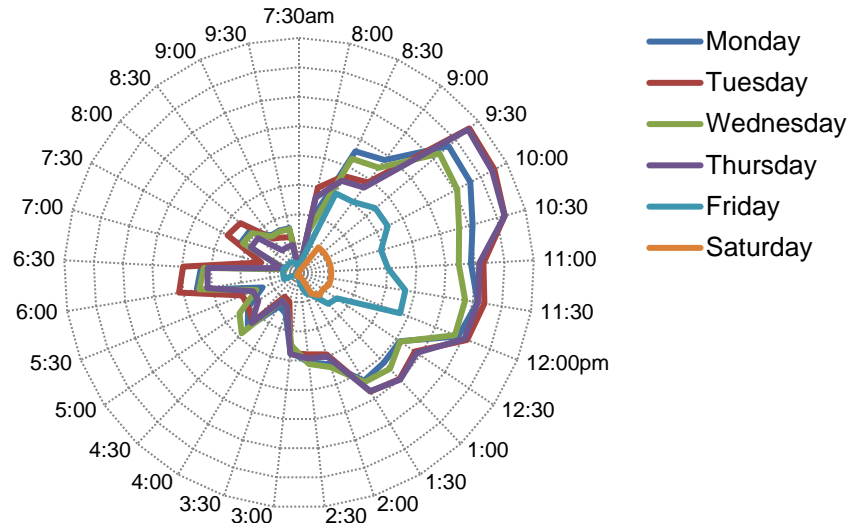


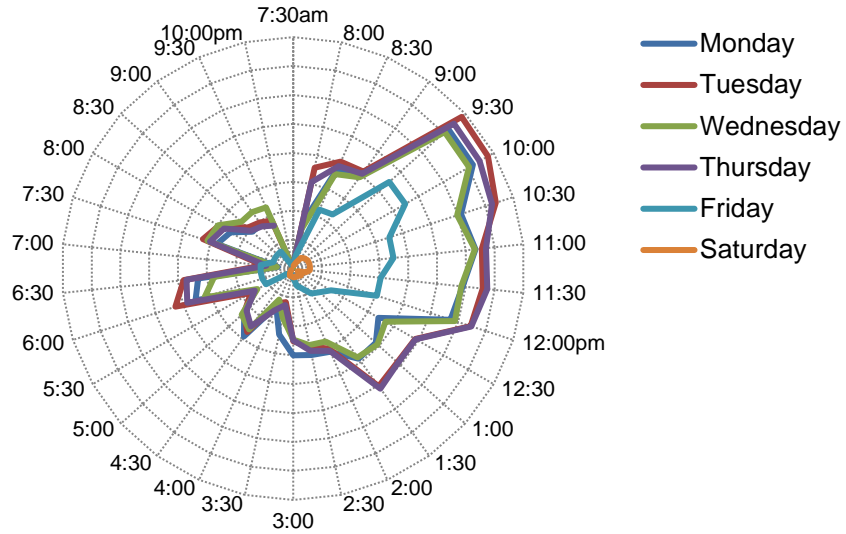
Figure 3: Comparison of Student Headcount Concentrations for Classrooms by Time of Day and Day of Week

(excludes lab, seminar and activity rooms)

Fall 2015



Fall 2010



Fall 2007

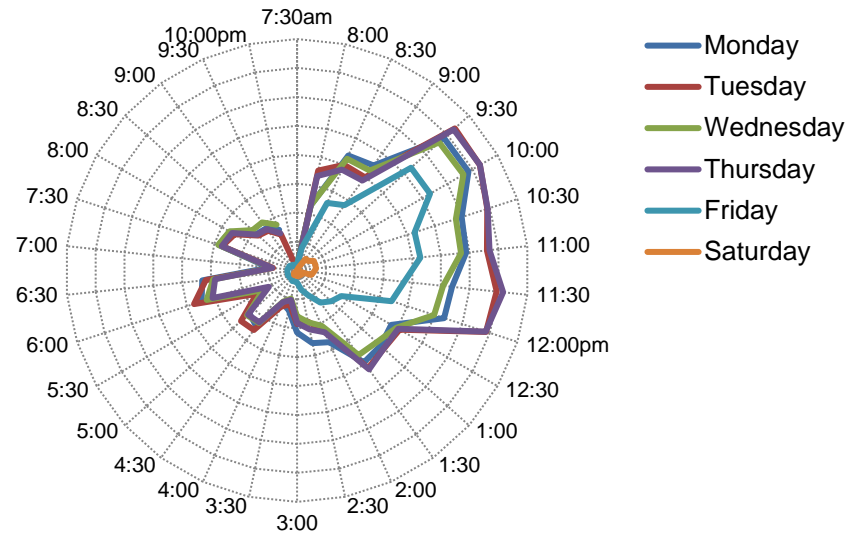


Table 1: Selected Course Dimensions for 2015 Fall 20thday

(excludes arranged, appointment and thesis sections)

* space utilization reports rate based on room size and class quota set.

time/day:	sections		students*		space utilization*		day:	sections		students*		space utilization*	
	Total				room size	quota		Total				room size	crn quota
Total	1,744	100%	43,694	100%	51.9%	69.1%	Total	1,744	97%	43,694	100%	51.9%	69.1%
morning	780	44.7%	21,887	50.1%	56.4%	73.7%	1 mon only	152	8.7%	3,280	7.5%	53.6%	72.1%
afternoon	561	32.2%	12,623	28.9%	47.3%	65.7%	2 tue only	187	10.7%	3,851	8.8%	54.6%	75.5%
evening	403	23.1%	9,184	21.0%	49.5%	64.8%	3 wed only	136	7.8%	3,033	6.9%	52.0%	71.5%
	1,744	100%	43,694	100%	51.9%	69.1%	4 thu only	129	7.4%	2,729	6.2%	54.1%	70.3%
meets 1 weekday	650	37.3%	13,814	31.6%	53.0%	72.2%	5 fri only	46	2.6%	921	2.1%	44.2%	66.2%
meets 2 weekdays	810	46.4%	22,000	50.4%	52.2%	69.0%	6 S and N	32	1.8%	739	1.7%	34.9%	48.9%
meets 3 weekdays	179	10.3%	5,670	13.0%	51.9%	65.6%	7 M and W	334	19.2%	8,498	19.4%	51.9%	69.1%
meets daily	73	4.2%	1,471	3.4%	45.3%	59.4%	8 T and H	471	27.0%	13,425	30.7%	52.6%	69.0%
weekend only	32	1.8%	739	1.7%	34.9%	48.9%	9 MWF	166	9.5%	5,421	12.4%	52.6%	66.4%
							10 daily	41	2.4%	869	2.0%	55.9%	62.3%
							11 other	50	2.9%	928	2.1%	36.0%	56.5%

*students can be counted multiple times based on how enrollment in multiple courses

time/day:	mon only	tue only	wed only	thu only	fri only	weekend	M and W	T and H	MWF	daily	other
morning	100%	100%	100%	100%	100%	100%	100%	100%	100%	100%	100%
afternoon	25.7%	24.6%	19.9%	25.6%	47.8%	71.9%	42.8%	53.7%	83.7%	73.2%	50.0%
evening	30.9%	31.0%	32.4%	36.4%	28.3%	18.8%	39.2%	34.8%	16.3%	22.0%	30.0%

Class start time counts & utilization:

start time	sections starting		students*		space utilization*				Type:	num crn		num students		space utilization*	
			number	mean	room size	>90%	crn quota	>90%				rm size	crn quota		
Total	1,744	100%	43,694	25.1	51.9%	12.4%	69.1%	37.1%	Total	1,744	100%	43,694	100%	51.9%	69.1%
7:00	1	0.1%	1	1.0	1.0%	0.0%	1.0%	0.0%	lecture	1,193	68.4%	34,738	79.5%	53.8%	70.7%
7:30	11	0.6%	118	10.7	28.0%	0.0%	48.5%	18.2%	lab	294	16.9%	5,960	13.6%	64.6%	83.5%
8:00	118	6.8%	3,087	26.2	58.9%	13.6%	79.5%	50.8%	experiential	45	2.6%	727	1.7%	45.6%	62.4%
8:30	66	3.8%	2,012	30.5	54.7%	13.6%	71.8%	39.4%	activity	133	7.6%	1,418	3.2%	19.1%	35.3%
9:00	36	2.1%	1,105	30.7	57.4%	13.9%	75.4%	41.7%	seminar	50	2.9%	590	1.4%	37.0%	58.1%
9:30	215	12.3%	6,777	31.5	57.0%	14.4%	73.4%	41.9%	workshop	29	1.7%	261	0.6%	28.3%	41.3%
10:00	15	0.9%	293	19.5	46.0%	6.7%	66.1%	20.0%							
10:30	71	4.1%	1,683	23.7	52.6%	14.1%	67.7%	31.0%							
11:00	165	9.5%	4,788	29.0	61.8%	21.8%	78.9%	52.1%							
11:30	82	4.7%	2,023	24.7	51.2%	14.6%	67.3%	29.3%							
12:00pm	10	0.6%	257	25.7	54.0%	0.0%	77.0%	30.0%							
12:30	179	10.3%	4,668	26.1	49.9%	8.4%	66.5%	33.5%							
1:00	51	2.9%	1,201	23.5	54.2%	11.8%	78.9%	54.9%							
1:30	57	3.3%	879	15.4	33.2%	1.8%	57.4%	17.5%							
2:00	117	6.7%	2,626	22.4	50.4%	18.8%	67.3%	39.3%							
2:30	40	2.3%	504	12.6	38.9%	7.5%	61.2%	32.5%							
3:00	21	1.2%	421	20.0	51.4%	19.0%	70.7%	42.9%							
3:30	37	2.1%	535	14.5	35.6%	8.1%	51.5%	21.6%							
4:00	49	2.8%	1,532	31.3	52.0%	10.2%	65.1%	30.6%							
4:30	70	4.0%	1,236	17.7	47.1%	8.6%	63.3%	30.0%							
5:00	21	1.2%	408	19.4	43.0%	9.5%	67.4%	33.3%							
5:30	141	8.1%	3,524	25.0	49.5%	9.2%	66.0%	34.8%							
6:00	7	0.4%	82	11.7	46.2%	14.3%	72.4%	42.9%							
6:30	1	0.1%	30	30.0	88.2%	0.0%	100.0%	100.0%							
7:00pm	160	9.2%	3,866	24.2	51.6%	9.4%	63.8%	28.1%							
7:30pm	3	0.2%	38	12.7	34.4%	0.0%	55.9%	33.3%							

Table 2: Course¹ Time of Day and Day of Week Offerings, 1980 to 2015

<u>Time of Day² of Course Offerings by Year on Fall 20th day</u>											1980 to	1990 to	2000 to
Time Dimension:	1980	1990	2000	2009	2010	2011	2012	2013	2014	2015	2015	2015	2015
	100%	100%	100%	100%	100%	100%	100%	100%	100%	100%	Percent change		
Morning	49.4%	50.0%	46.2%	43.5%	43.5%	43.2%	43.1%	42.2%	43.7%	43.8%	-5.6%	-2.4%	0.3%
Afternoon	25.2%	21.6%	25.8%	28.9%	29.2%	30.3%	30.7%	32.8%	31.8%	31.9%	6.7%	6.1%	2.7%
Evening	25.4%	28.3%	28.0%	27.6%	27.2%	26.4%	26.3%	25.0%	24.5%	24.3%	-1.1%	-3.8%	-3.0%
<u>Day of Week of Course Offerings by Year on Fall 20th day</u>											1980 to	1990 to	2000 to
Morning ONLY:	1980	1990	2000	2009	2010	2011	2012	2013	2014	2015	2015	2015	2015
	100%	100%	100%	100%	100%	100%	100%	100%	100%	100%	Percent change		
Monday only	1.9%	1.4%	3.4%	2.3%	3.0%	3.2%	3.5%	3.1%	3.8%	4.1%	2.2%	0.7%	1.2%
Tuesday only	3.3%	5.6%	6.5%	7.2%	7.3%	7.7%	7.4%	8.3%	8.2%	7.7%	4.4%	1.2%	0.4%
Wednesday only	1.6%	1.1%	1.6%	2.5%	2.7%	3.1%	3.3%	2.5%	3.3%	3.4%	1.8%	1.8%	0.6%
Thursday only	3.0%	4.3%	5.1%	6.1%	6.4%	6.6%	5.7%	5.1%	5.8%	6.7%	3.6%	1.5%	0.3%
Friday only	2.9%	2.4%	2.4%	3.7%	3.5%	3.4%	3.5%	3.5%	3.9%	3.8%	1.0%	1.4%	0.3%
Weekend	2.2%	2.2%	5.6%	4.0%	4.2%	3.9%	4.0%	3.3%	3.2%	3.3%	1.1%	-2.4%	-0.9%
Monday & Wednesday	4.5%	6.6%	6.7%	12.9%	17.4%	18.2%	18.7%	18.3%	17.5%	16.4%	11.9%	9.7%	-1.1%
Tuesday & Thursday	29.7%	31.5%	29.6%	32.4%	32.3%	32.0%	31.6%	28.2%	28.6%	28.4%	-1.3%	-1.2%	-3.8%
Mon, Wed, Fri	38.3%	33.9%	31.1%	22.4%	16.5%	15.7%	16.2%	16.1%	16.4%	16.1%	-22.2%	-15.0%	-0.5%
Other ³	12.6%	10.9%	7.9%	6.5%	6.6%	6.4%	6.1%	11.6%	9.3%	10.1%	-2.5%	2.2%	3.5%
Afternoon ONLY:	1980	1990	2000	2009	2010	2011	2012	2013	2014	2015	2015	2015	2015
	100%	100%	100%	100%	100%	100%	100%	100%	100%	100%	Percent change		
Monday only	16.4%	12.7%	10.1%	12.4%	10.7%	10.5%	10.6%	9.3%	10.5%	10.7%	-5.7%	0.6%	0.0%
Tuesday only	8.8%	10.5%	8.4%	10.2%	8.5%	8.8%	9.9%	8.1%	8.5%	8.7%	-0.1%	0.3%	0.2%
Wednesday only	8.3%	6.7%	8.2%	10.2%	9.2%	9.5%	9.9%	7.6%	7.5%	7.2%	-1.1%	-1.0%	-1.9%
Thursday only	6.1%	5.6%	5.6%	6.4%	8.7%	8.3%	8.9%	8.3%	7.1%	8.4%	2.3%	2.8%	-0.3%
Friday only	2.5%	4.9%	4.3%	2.9%	2.4%	3.4%	3.7%	6.4%	5.0%	6.1%	3.6%	1.8%	3.7%
Weekend	0.2%	0.0%	3.0%	1.2%	1.4%	1.4%	1.2%	1.4%	1.4%	1.3%	1.1%	-1.7%	-0.1%
Monday & Wednesday	7.4%	12.2%	15.3%	17.6%	19.2%	19.8%	20.2%	21.0%	21.6%	21.0%	13.6%	5.7%	1.8%
Tuesday & Thursday	17.7%	23.2%	28.4%	25.1%	27.7%	26.9%	24.9%	23.0%	25.6%	25.8%	8.1%	-2.6%	-1.9%
Mon, Wed, Fri	20.4%	13.6%	9.3%	8.3%	5.8%	5.6%	5.2%	4.9%	5.3%	4.1%	-16.3%	-5.3%	-1.7%
Other ³	12.1%	10.7%	7.3%	5.9%	6.6%	5.8%	5.5%	10.1%	7.4%	6.7%	-5.4%	-0.6%	0.0%
Evening ONLY:	1980	1990	2000	2009	2010	2011	2012	2013	2014	2015	2015	2015	2015
	100%	100%	100%	100%	100%	100%	100%	100%	100%	100%	Percent change		
Monday only	16.7%	14.3%	14.5%	15.9%	16.8%	14.5%	12.9%	13.3%	14.7%	16.0%	-0.6%	1.5%	-0.7%
Tuesday only	19.5%	18.2%	18.8%	21.3%	19.5%	19.4%	22.0%	21.1%	16.9%	19.7%	0.1%	0.8%	0.2%
Wednesday only	15.8%	14.6%	16.2%	17.1%	15.8%	16.7%	14.6%	14.7%	17.1%	16.8%	1.0%	0.6%	0.9%
Thursday only	15.1%	12.6%	14.0%	14.6%	14.2%	13.3%	15.4%	13.7%	13.6%	11.8%	-3.2%	-2.2%	-2.4%
Friday only	0.0%	0.2%	2.1%	2.9%	3.6%	3.4%	3.8%	3.7%	3.7%	2.9%	2.9%	0.8%	-0.8%
Weekend	0.0%	0.0%	0.0%	0.5%	0.2%	0.0%	0.0%	0.0%	0.4%	0.8%	0.8%	0.8%	0.6%
Monday & Wednesday	13.6%	17.9%	16.8%	14.1%	14.0%	14.7%	12.7%	14.0%	14.7%	14.7%	1.1%	-2.1%	0.7%
Tuesday & Thursday	16.3%	18.9%	15.7%	11.2%	13.7%	15.9%	15.9%	16.3%	15.7%	14.3%	-2.0%	-1.4%	0.7%
Mon, Wed, Fri	0.0%	0.2%	0.0%	0.0%	0.0%	0.0%	0.0%	0.0%	0.0%	0.0%	0.0%	0.0%	0.0%
Other ³	3.0%	3.2%	1.9%	2.5%	2.2%	2.2%	2.9%	3.0%	3.1%	3.1%	0.0%	1.2%	0.9%

¹ Course data reported at the crn level and excludes arranged, appointment and individual research classes.² Time of day: morning includes midnight to 11:59am, afternoon includes 12:00pm to 4:29pm, and evening includes 4:30pm to 11:59pm; arranged class sections excluded.³ Other includes daily (M-F) and non-standard day sets such as Monday-Tuesday-Wednesday.

Table 3: Rooms Designated as Classroom Purpose (bcat_code 110 or 120) in use on 20th day Fall 2015 (131 rooms 7,438 seats available)

(includes lecture, seminars, experiential and workshop classes that occur in a classroom purpose room; excludes labs and activity courses)

Bldg/rm	num classes	room seats	total num students	mean students	mean utilization	Bldg/rm	num classes	room seats	total num students	mean students	mean utilization	Bldg/rm	num classes	room seats	total num students	mean students	mean utilization
Ahlberg						Elliott						Hubbard					
AH104	4	30	53	13	44.2%	EH105	8	35	196	25	70.0%	HH104A	3	15	13	4	28.9%
AH110	13	60	438	34	56.2%	EH109	14	30	307	22	73.1%	HH105A	5	20	39	8	39.0%
AH110A	1	60	44	44	73.3%	EH110	10	30	218	22	72.7%	HH114E	2	20	15	8	37.5%
AH129	3	28	42	14	50.0%	EH111	5	30	118	24	78.7%	HH208	5	481	755	151	31.4%
AH200	7	229	456	65	28.4%	EH112	10	50	177	18	35.4%	HH209	8	235	929	116	49.4%
AH201	7	138	408	58	42.2%	EH225	8	28	99	12	44.2%	HH211	11	234	1,019	93	39.6%
AH208	11	50	348	32	63.3%	Engineering						HH218	14	130	910	65	50.0%
AH210	11	36	228	21	57.6%	EB102	10	46	235	24	51.1%	HH219	9	45	230	26	56.8%
AH214	12	50	399	33	66.5%	EB122	11	30	152	14	46.1%	HH220	11	45	277	25	56.0%
AH218	10	30	182	18	60.7%	EB202	11	55	295	27	48.8%	HH223	9	60	324	36	60.0%
AH300	9	70	384	43	61.0%	EB210	6	36	71	12	32.9%	HH226	9	50	262	29	58.2%
AH302	11	72	459	42	58.0%	EB211	13	70	524	40	57.6%	HH227	6	60	206	34	57.2%
Clinton						Fiske						Jabara					
CH107	17	108	1,251	74	68.1%	FH209	9	15	91	10	65.9%	HH228	11	45	205	19	41.4%
CH126	15	108	816	54	50.4%	FH310	1	15	6	6	0.4	HH229	8	45	215	27	59.7%
CH200	18	60	596	33	55.2%	Duerksen						HH230	11	45	195	18	39.4%
CH203	3	20	15	5	25.0%	DAB101	9	75	317	35	47.0%	HH231	8	130	407	51	39.1%
CH204	16	58	463	29	49.9%	DAB102	6	30	66	11	36.7%	HH336	9	35	192	21	61.0%
CH206	6	54	134	22	41.4%	DAB103	8	30	55	7	22.9%	JB104	10	50	331	33	66.2%
CH213	8	40	239	30	74.7%	DAB119	3	30	17	6	18.9%	JB126	10	35	223	22	63.7%
CH214	14	75	593	42	56.5%	DAB201	5	42	31	6	14.8%	JB127	12	122	696	58	47.5%
Corbin						DAB202	2	28	32	16	57.1%	JB128	9	94	347	39	41.0%
CE155	13	48	276	21	44.2%	DAB203	6	30	80	13	44.4%	JB226	15	60	489	33	54.3%
CE156C	11	30	201	18	60.9%	DAC007	6	42	21	4	8.3%	JB336	11	36	188	17	47.5%
CE157	12	44	242	20	45.8%	DAC124	2	10	3	2	15.0%	JB372	13	36	296	23	63.2%
CE158	10	48	244	24	50.8%	Geology						Jardine					
CE159	8	20	93	12	58.1%	GE101	18	138	1,027	57	41.3%	JH306	11	36	158	14	39.9%
CE162	8	25	129	16	64.5%	GE206	12	35	297	25	70.7%	JH308	9	43	187	21	48.3%
CE251	12	34	224	19	54.9%	GE207	6	30	66	11	36.7%	JH309	7	43	150	21	49.8%
Devlin						Henrion						Jardine					
DH010	15	52	520	35	66.7%	HG120	7	40	76	11	27.1%	JH310	5	46	89	18	38.7%
DH103	10	34	149	15	43.8%	HG126	4	24	90	22.5	93.8%	JH314	8	40	240	30	75.0%
DH104	11	30	204	19	61.8%	Heskett											
DH105	11	38	283	26	67.7%	HC105	10	54	235	24	43.5%						
DH106	10	36	180	18	50.0%	HC133	15	30	194	13	43.1%						
DH107	12	196	879	73	37.4%	HC207	17	46	341	20	43.6%						

Table 3 (con't): Rooms Designated as Classroom Purpose (bcat_code 110 or 120) in use on 20th day Fall 2015 (131 rooms 7,438 seats available)

(includes lecture, seminars, experiential and workshop classes that occur in a classroom purpose room; excludes labs and activity courses)

Bldg/rm	num classes	room seats	total num students	mean students	mean utilization	Bldg/rm	num classes	room seats	total num students	mean students	mean utilization	Bldg/rm	num classes	room seats	total num students	mean students	mean utilization		
Lindquist						McKinley						Wallace							
LH100	14	114	911	65	57.1%	MC105	10	40	302	30	75.5%	WH123	11	70	432	39	56.1%		
LH101	14	40	375	27	67.0%	MC106	12	60	407	34	56.5%	WH209	9	36	185	21	57.1%		
LH103	15	40	364	24	60.7%	MC107	9	60	310	34	57.4%	WH210	13	35	299	23	65.7%		
LH104	10	35	123	12	35.1%	MC108	7	60	272	39	64.8%	WH215	8	34	134	17	49.3%		
LH105	8	40	190	24	59.4%	MC204	15	70	296	20	28.2%	WH310	9	55	361	40	72.9%		
LH109	8	35	177	22	60.4%	MC207	15	50	423	28	56.4%	Wilner							
LH111	12	36	206	17	47.7%	MC218	7	66	205	29	44.4%	WA001	4	40	81	20	45.6%		
LH112	9	36	176	20	54.3%	MC224	14	117	731	52	44.6%	WA204	4	40	32	8	20.0%		
LH113	11	40	307	28	69.8%	MC227	8	30	127	16	52.9%								
LH114	12	40	289	24	60.2%	MC324	15	102	483	32	31.6%								
LH207	5	36	69	14	38.3%	McKnight													
LH310	10	20	123	12	61.5%	MK210	10	75	314	31	37.9%								
LH324	12	45	294	25	54.4%	MK211	5	48	33	7	13.8%								
LH325	8	25	113	14	56.5%	Neff													
LH326	9	45	270	30	66.7%	NH209	9	49	150	17	34.0%								
LH500	9	17	81	9	52.9%	NH210	8	45	130	16	36.1%								
LH535	19	36	307	16	44.9%	NH211	7	45	118	17	37.5%								

Table 4: Classroom related Sections (crn), Students & Room Utilization Rates by Time of Day on 20thday Fall 2015 (131 rooms 7,438 seats available)
 (includes lecture, seminars, experiential and workshop classes that occur in a classroom purpose room; excludes labs & conference rooms.)

Room Occupancy by Time of Day (30 minute intervals):

time slice	number of course sections						number of students						mean room utilization rate						pct of sections above 90% utilization					
	Monday	Tuesday	Wednesday	Thursday	Friday	Saturday	Monday	Tuesday	Wednesday	Thursday	Friday	Saturday	Monday	Tuesday	Wednesday	Thursday	Friday	Saturday	Monday	Tuesday	Wednesday	Thursday	Friday	Saturday
morning:																								
7:30am	2	2	2	2	2	0	21	28	21	28	21	0	28%	43%	28%	43%	28%	0%	0%	0%	0%	0%	0%	0%
8:00	34	49	30	43	15	2	891	1,490	714	1,318	242	30	58%	58%	56%	57%	36%	26%	9%	12%	10%	12%	0%	0%
8:30	68	60	65	55	43	4	2,282	1,815	2,142	1,726	1,493	53	60%	59%	59%	60%	54%	25%	16%	15%	17%	16%	19%	0%
9:00	75	65	71	60	46	14	2,411	1,933	2,249	1,826	1,520	549	60%	58%	58%	58%	53%	46%	17%	14%	15%	15%	17%	14%
9:30	106	113	101	108	54	14	3,338	3,801	3,139	3,772	1,704	549	56%	58%	54%	58%	55%	46%	11%	12%	10%	13%	11%	14%
10:00	106	111	99	106	55	14	3,298	3,761	3,044	3,721	1,710	549	55%	58%	53%	59%	55%	46%	11%	13%	10%	13%	11%	14%
10:30	106	106	99	103	57	14	3,067	3,634	2,826	3,630	1,445	550	54%	58%	53%	58%	52%	46%	13%	12%	13%	13%	14%	14%
11:00	98	103	92	99	57	14	2,930	3,145	2,722	3,072	1,518	550	57%	57%	57%	57%	54%	46%	9%	14%	10%	13%	12%	14%
11:30	95	103	90	99	60	14	3,080	3,197	2,865	3,086	1,833	550	56%	58%	55%	58%	51%	46%	8%	16%	9%	15%	10%	14%
afternoon:																								
12:00pm	92	100	91	97	57	14	2,914	3,081	2,854	3,030	1,852	550	55%	58%	55%	59%	53%	46%	8%	16%	9%	15%	11%	14%
12:30	76	79	77	80	30	10	2,072	2,381	2,077	2,422	774	490	53%	51%	53%	51%	49%	49%	5%	4%	6%	4%	0%	20%
1:00	75	85	80	84	28	11	2,102	2,484	2,246	2,500	721	515	53%	50%	53%	50%	47%	47%	8%	4%	10%	4%	0%	18%
1:30	78	85	77	81	20	9	2,142	2,356	2,168	2,347	444	413	51%	48%	51%	48%	40%	45%	9%	4%	10%	4%	0%	22%
2:00	64	69	64	64	19	5	1,639	1,459	1,689	1,500	361	59	51%	41%	51%	41%	37%	16%	14%	3%	17%	3%	0%	0%
2:30	64	65	61	61	11	5	1,531	1,392	1,557	1,462	198	59	50%	40%	51%	42%	42%	16%	16%	3%	20%	3%	0%	0%
3:00	56	62	50	56	5	5	1,348	1,369	1,239	1,389	80	59	50%	41%	51%	42%	34%	16%	16%	3%	22%	4%	0%	0%
3:30	34	28	31	25	4	5	725	511	635	628	58	59	48%	46%	45%	48%	31%	16%	9%	0%	16%	0%	0%	0%
4:00	30	23	28	22	3	5	660	472	548	548	57	59	46%	46%	42%	48%	40%	16%	7%	0%	11%	0%	0%	0%
evening:																								
4:30	49	40	52	43	4	4	1,270	1,153	1,416	1,173	69	34	49%	54%	46%	51%	38%	16%	8%	5%	10%	0%	0%	0%
5:00	41	35	45	32	3	4	1,048	1,044	1,228	838	44	34	48%	54%	42%	52%	30%	16%	5%	9%	4%	3%	0%	0%
5:30	31	42	33	35	9	0	672	1,038	780	838	277	0	50%	48%	41%	50%	41%	0%	3%	12%	3%	9%	11%	0%
6:00	64	76	59	60	8	0	1,763	2,069	1,721	1,578	273	0	49%	50%	45%	49%	46%	0%	5%	12%	5%	12%	13%	0%
6:30	63	71	56	58	8	0	1,672	1,976	1,623	1,558	273	0	48%	52%	46%	50%	46%	0%	5%	13%	5%	12%	13%	0%
7:00	14	34	14	16	8	0	255	670	240	296	273	0	40%	41%	38%	43%	46%	0%	0%	3%	0%	6%	13%	0%
7:30	47	57	45	32	6	0	1,114	1,375	1,081	927	233	0	49%	45%	46%	52%	47%	0%	4%	4%	4%	3%	17%	0%
8:00	46	54	43	31	6	0	1,101	1,312	1,053	914	233	0	50%	44%	47%	52%	47%	0%	4%	4%	5%	3%	17%	0%
8:30	34	33	32	17	6	0	796	737	777	482	233	0	47%	44%	44%	55%	47%	0%	3%	3%	3%	0%	17%	0%
9:00	34	30	32	17	5	0	796	665	777	482	197	0	47%	43%	44%	55%	50%	0%	3%	3%	3%	0%	20%	0%
9:30	32	27	30	17	3	0	782	623	763	482	164	0	50%	46%	46%	55%	61%	0%	3%	4%	3%	0%	33%	0%
10:00pm	1	1	2	1	3	0	8	8	19	8	164	0	18%	18%	27%	18%	61%	0%	0%	0%	0%	0%	33%	0%

Table 5: All Class Sections (crn), Student Headcounts and Room Utilization Rates by Time of Day on 20thday Fall 2015 (227 rms, 10,797 seats)
(includes lectures, labs, experiential, activity and seminar classes)

Room Occupancy by Time of Day (30 minute intervals):

time slice	number of course sections						number of students						mean room utilization rate						pct of sections above 90% utilization						
	Monday	Tuesday	Wednesday	Thursday	Friday	Saturday	Monday	Tuesday	Wednesday	Thursday	Friday	Saturday	Monday	Tuesday	Wednesday	Thursday	Friday	Saturday	Monday	Tuesday	Wednesday	Thursday	Friday	Saturday	
morning:																									
6:30am	0	0	0	0	0	0	0	0	0	0	0	0	0%	0%	0%	0%	0%	0%	0%	0%	0%	0%	0%	0%	
7:00	1	0	1	0	1	0	1	0	1	0	1	0	1%	0%	1%	0%	1%	0%	0%	0%	0%	0%	0%	0%	
7:30	6	4	4	3	3	0	61	33	41	29	22	0	24%	28%	23%	29%	19%	0%	0%	0%	0%	0%	0%	0%	
8:00	43	62	37	55	18	3	1,034	1,724	843	1,530	263	31	56%	59%	57%	57%	33%	19%	12%	16%	11%	11%	0%	0%	
8:30	86	80	81	72	48	7	2,579	2,210	2,425	2,025	1,587	59	59%	60%	60%	58%	54%	19%	15%	18%	15%	14%	19%	0%	
9:00	95	86	89	80	52	19	2,740	2,332	2,564	2,199	1,648	588	59%	59%	58%	59%	53%	42%	16%	16%	13%	14%	17%	11%	
9:30	136	145	130	141	69	19	3,909	4,394	3,704	4,356	1,980	588	57%	58%	56%	58%	53%	42%	14%	14%	12%	13%	13%	11%	
10:00	136	145	128	141	71	21	3,869	4,374	3,617	4,326	1,996	601	57%	58%	56%	58%	53%	40%	14%	14%	13%	13%	13%	10%	
10:30	133	134	125	132	74	20	3,504	4,110	3,254	4,139	1,684	601	55%	59%	54%	59%	49%	42%	14%	15%	14%	13%	14%	10%	
11:00	124	145	118	138	75	20	3,347	3,823	3,139	3,672	1,768	601	57%	59%	56%	58%	50%	42%	12%	20%	13%	17%	12%	10%	
11:30	126	144	120	136	77	20	3,564	3,873	3,354	3,631	2,103	601	57%	59%	58%	58%	51%	42%	14%	21%	16%	18%	12%	10%	
afternoon:																									
12:00pm	121	137	119	133	73	20	3,348	3,651	3,296	3,539	2,068	601	56%	59%	57%	58%	52%	42%	14%	21%	16%	19%	11%	10%	
12:30	108	132	113	131	44	13	2,480	3,058	2,565	3,068	983	506	50%	50%	50%	49%	49%	43%	9%	11%	11%	10%	5%	15%	
1:00	111	139	117	135	41	13	2,567	3,163	2,757	3,144	931	540	50%	49%	51%	48%	50%	47%	12%	10%	14%	10%	5%	15%	
1:30	115	130	116	124	35	12	2,625	2,971	2,685	2,902	643	439	49%	50%	49%	49%	41%	43%	12%	11%	14%	10%	3%	17%	
2:00	102	114	100	104	31	8	2,114	2,211	2,142	2,128	537	85	48%	47%	47%	46%	40%	23%	16%	11%	17%	10%	3%	0%	
2:30	98	119	90	109	18	8	1,983	2,213	1,939	2,130	338	85	50%	45%	50%	43%	51%	23%	16%	10%	19%	8%	6%	0%	
3:00	89	113	80	102	10	8	1,769	2,099	1,628	1,996	177	85	49%	45%	49%	44%	52%	23%	17%	12%	20%	10%	10%	0%	
3:30	66	67	60	56	6	6	1,148	1,078	1,026	1,006	84	60	47%	52%	44%	46%	38%	14%	15%	15%	17%	11%	0%	0%	
4:00	61	59	54	53	4	6	1,077	1,007	890	914	71	60	45%	52%	40%	46%	42%	14%	13%	17%	9%	11%	0%	0%	
evening:																									
4:30	82	74	79	70	6	5	1,795	1,623	1,842	1,487	113	35	52%	56%	47%	52%	50%	14%	16%	16%	10%	9%	17%	0%	
5:00	65	56	65	46	5	5	1,424	1,250	1,568	942	88	35	54%	48%	49%	47%	47%	14%	11%	9%	8%	4%	20%	0%	
5:30	46	51	44	40	13	1	851	1,112	912	878	345	1	50%	45%	42%	48%	46%	5%	9%	10%	5%	8%	15%	0%	
6:00	85	92	81	77	12	0	2,069	2,255	2,038	1,801	341	0	52%	50%	48%	50%	49%	0%	9%	12%	7%	13%	17%	0%	
6:30	83	87	77	76	12	0	1,971	2,161	1,920	1,789	341	0	51%	51%	48%	51%	49%	0%	10%	13%	8%	13%	17%	0%	
7:00	31	50	32	30	11	0	435	888	468	490	311	0	41%	46%	45%	49%	44%	0%	6%	8%	6%	13%	9%	0%	
7:30	68	76	64	51	11	0	1,368	1,630	1,336	1,204	288	0	49%	49%	48%	54%	40%	0%	7%	8%	9%	10%	9%	0%	
8:00	62	72	57	50	11	0	1,311	1,566	1,264	1,193	288	0	50%	49%	50%	54%	40%	0%	8%	8%	9%	10%	9%	0%	
8:30	45	42	40	26	11	0	945	900	928	646	288	0	48%	52%	49%	59%	40%	0%	9%	10%	10%	8%	9%	0%	
9:00	44	39	40	25	10	0	931	828	928	630	252	0	47%	52%	49%	58%	40%	0%	7%	10%	10%	8%	10%	0%	
9:30	40	35	36	22	8	0	871	763	867	588	219	0	47%	54%	48%	59%	42%	0%	5%	9%	6%	5%	13%	0%	
10:00pm	4	1	2	1	3	0	16	8	19	8	164	0	8%	18%	27%	18%	61%	0%	0%	0%	0%	0%	33%	0%	